



SALE

**640 N MILFORD
ROAD**
*640 N Milford Road
Milford, MI 48381*

Nestled in the vibrant heart of downtown Milford, this premium retail building stands as a beacon of opportunity. Spanning an impressive 11,000 square feet, this landmark property offers unparalleled visibility that's sure to attract a consistent flow of customers.

The building's location on the bustling north end of downtown ensures it's within easy walking distance for locals and tourists alike. This accessibility, coupled with ample parking, makes it an ideal spot for businesses seeking to tap into Milford's thriving community.

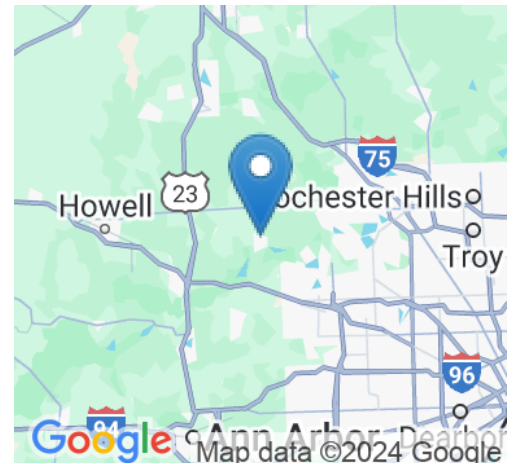
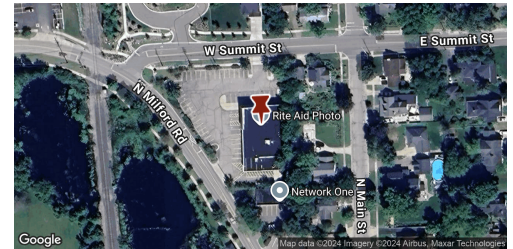
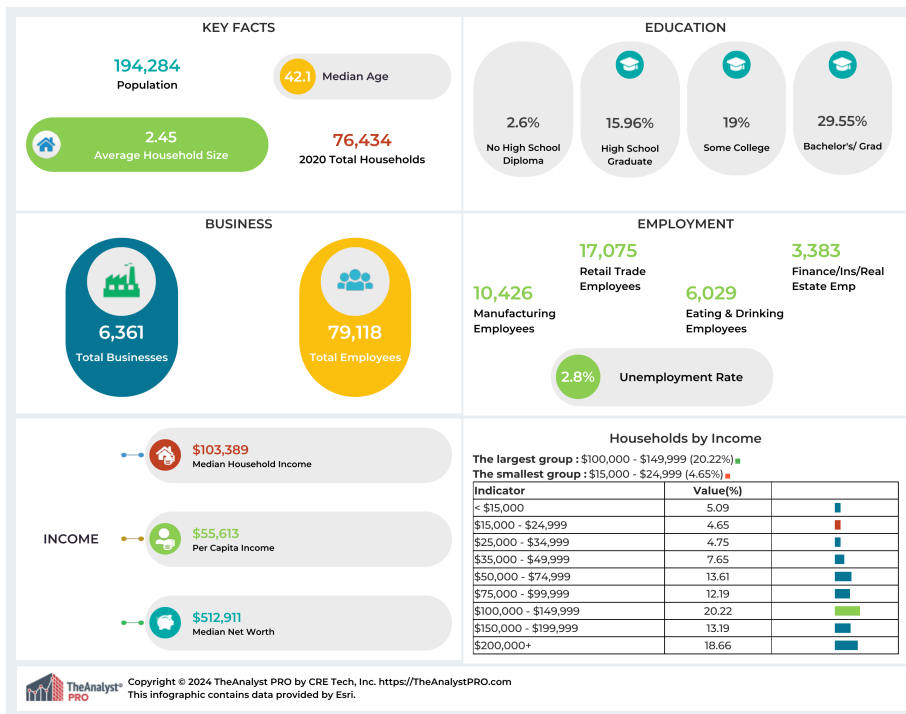
Call for Price

Land Size: 1.12 Acres
Property Size: 11,800 Sq. Ft.
Year Built: 2000

Contact:
313.312.5764

TREVOR BROOKS

License: 6501374378
t.brooks@kwcommercial.com



This information has been obtained from sources believed reliable. We have not verified it and make no guarantee, warranty or representation about it. Any projections, opinions, assumptions or estimates used are for example only and do not represent the current or future performance of the property. You and your advisors should conduct a careful, independent investigation of the property to determine to your satisfaction the suitability of the property for your needs. Photos herein are the property of their respective owners and use of these images without the express written consent of the owner is prohibited.

Contact:
313.312.5764
TREVOR BROOKS
License: 6501374378
t.brooks@kwcommercial.com