

# Office or Art Studio Space

FOR LEASE



2555 S. Santa Fe Drive, Denver, CO 80223

## PROPERTY INFORMATION

## HIGHLIGHTS

### Available Spaces:

**Suite 225:** 275 sq. ft.  
(\$500.00/month)

**Suite 250-260:** 1,058 sq. ft.  
(\$1,500.00/month)

**Term:** 1-3 years

- Located in the Enterprise Zone (tax benefits)
- Rent Includes All Utilities and Common Area Cleaning
- Shared Community Areas (Reception Area, Restrooms and Newly Remodeled Kitchen Area)
- Historic Building with Contemporary Finishes
- 24-Hour Key Access

## Contact Information



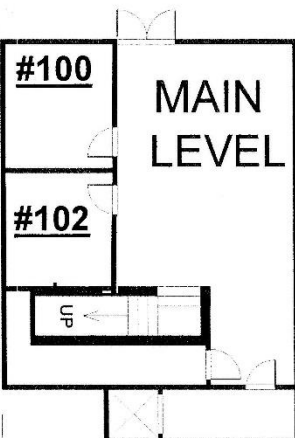
Hal Naiman 720.475.5002  
[hal@theshermanagencyinc.com](mailto:hal@theshermanagencyinc.com)  
Josh Snyder 720.475.5006  
[josh@theshermanagencyinc.com](mailto:josh@theshermanagencyinc.com)

The Sherman Agency, Inc.  
910 West 8th Avenue  
Denver, Colorado 80204  
Phone: 303.572.8778  
[www.theshermanagency.com](http://www.theshermanagency.com)

# Office or Art Studio Space

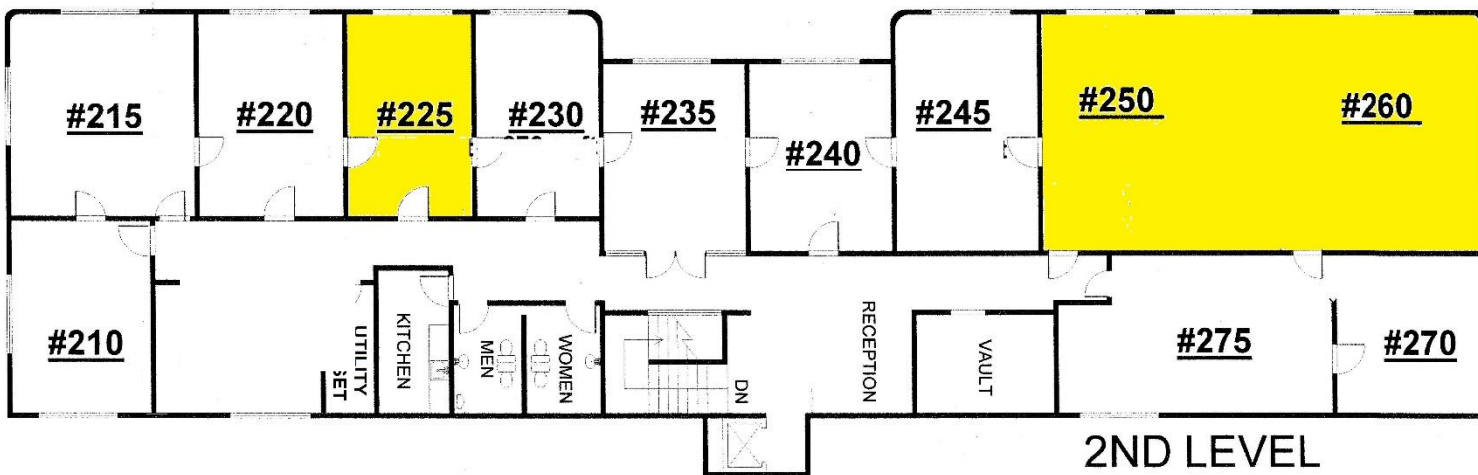
FOR LEASE

2555 S. Santa Fe Drive, Denver, CO 80223



N

----SOUTH SANTA FE DRIVE----



All information furnished in this presentation regarding this property for lease has been secured from sources we believe to be reliable. However, we accept no responsibility for its correctness and encourage the verification of all numbers prior to making any financial decisions.



## CONTACT INFORMATION

Hal Naiman 720.475.5002  
hal@theshermanagencyinc.com  
Josh Snyder 720.475.5006  
josh@theshermanagencyinc.com

The Sherman Agency, Inc.  
910 West 8th Avenue  
Denver, Colorado 80204  
Phone: 303.572.8778  
www.theshermanagency.com