

# AVAILABLE

± 1,411 SF



FOR LEASE

## Ocotillo Village

SSWC Ocotillo Rd & Alma School Rd | Chandler, AZ 85248





# Ocotillo Village

SSWC Ocotillo Rd & Alma School Rd | Chandler, AZ 85248



**FOR LEASE**



## AVAILABLE: SHOPS A

± 1,411 SF

## ABOUT THE PROPERTY

- Located just 1 mile east of Intel Corporation, the largest employer in Chandler
- Zoned C-2, City of Chandler
- Close proximity to I-10 Freeway and the Loop 202
- Very densely populated trade area including a high volume of daytime employment
- Close proximity to Basha's Legacy Corporation
- Average Household Income is over \$214,000 within a mile of site

## CONTACT

**CHUCK GIBSON**

602.682.6035 | [chuck.gibson@srsre.com](mailto:chuck.gibson@srsre.com)

**KARISA BURKE**

602.682.6099 | [karisa.burke@srsre.com](mailto:karisa.burke@srsre.com)



# Ocotillo Village

SSWC Ocotillo Rd & Alma School Rd | Chandler, AZ 85248



## DEMOGRAPHIC HIGHLIGHTS (2025)

### 1 MILE

11,792	12,019	\$214,952	10,502
2025 Population	2030 Population	Avg Household Income	Daytime Population

### 3 MILES

75,587	77,072	\$170,560	70,718
2025 Population	2030 Population	Avg Household Income	Daytime Population

### 5 MILES

178,898	183,916	\$154,560	184,231
2025 Population	2030 Population	Avg Household Income	Daytime Population



SOURCE

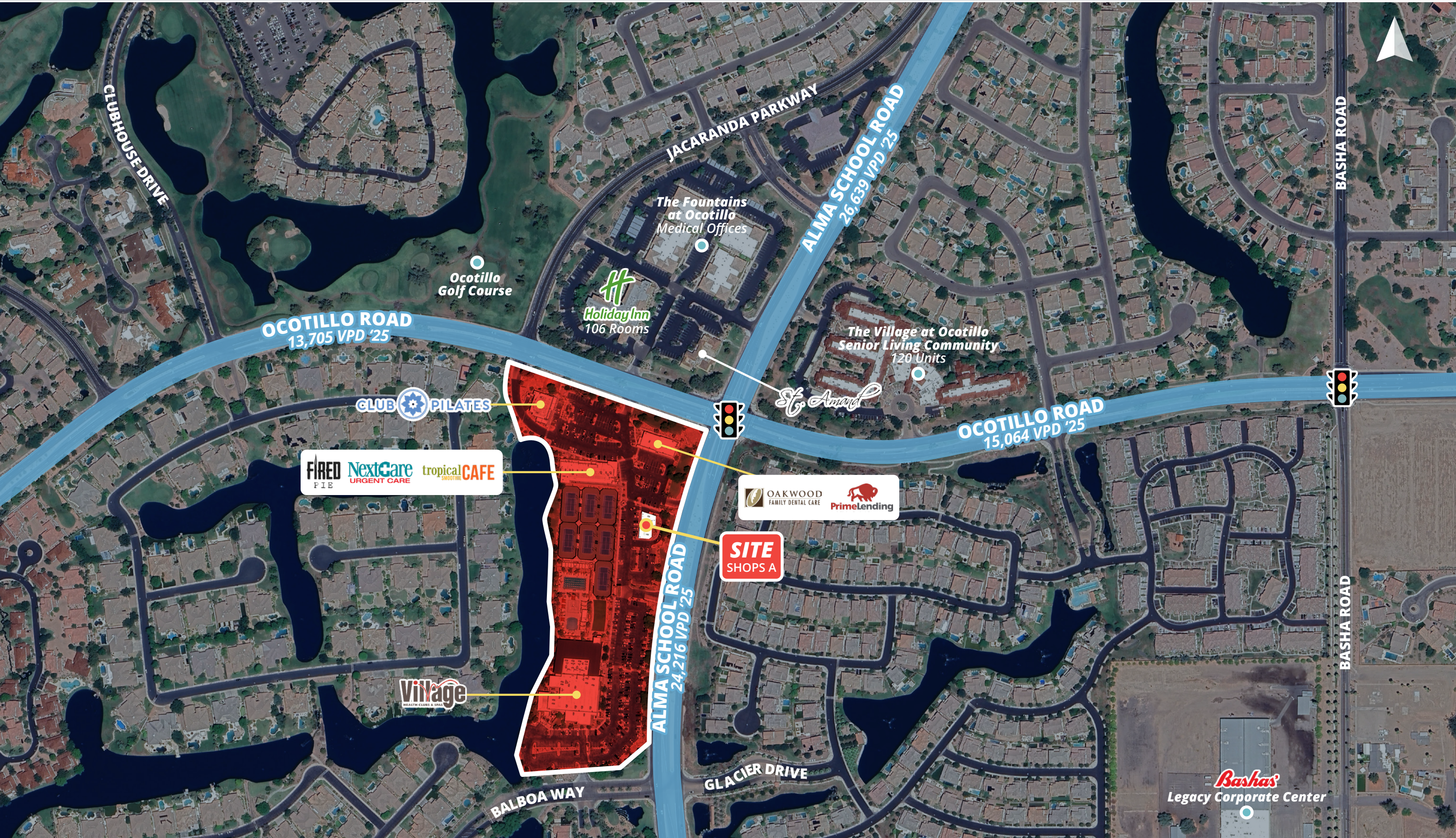


© SRS Real Estate Partners - The information presented was obtained from sources deemed reliable; however SRS Real Estate Partners does not guarantee its completeness or accuracy.



# Ocotillo Village

SSWC Ocotillo Rd & Alma School Rd | Chandler, AZ 85248





# Ocotillo Village

SSWC Ocotillo Rd & Alma School Rd | Chandler, AZ 85248







**SRS**

3131 E Camelback Road, Suite 110  
Phoenix, AZ 85016  
602.682.6000

**CHUCK GIBSON**

602.682.6035  
chuck.gibson@srsre.com

**KARISA BURKE**

602.682.6099  
karisa.burke@srsre.com

**SRSRE.COM**

© SRS

The information presented was obtained from sources deemed reliable;  
however SRS does not guarantee its completeness or accuracy.