

# FOR LEASE

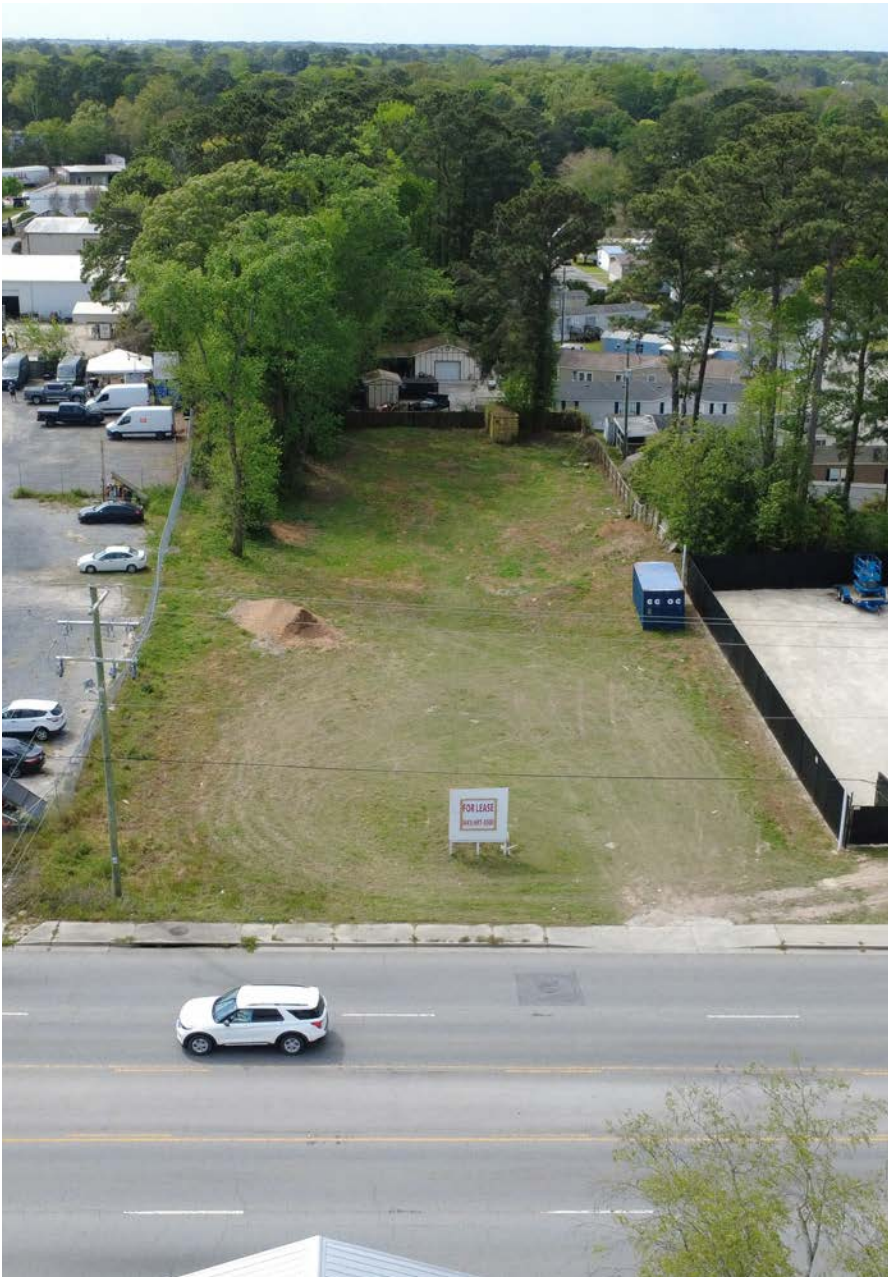
0.84 AC LAYDOWN YARD



5865 N RHETT AVE, HANAHAN, SC 29410



5865 N Rhett Ave, Hanahan, SC 29410



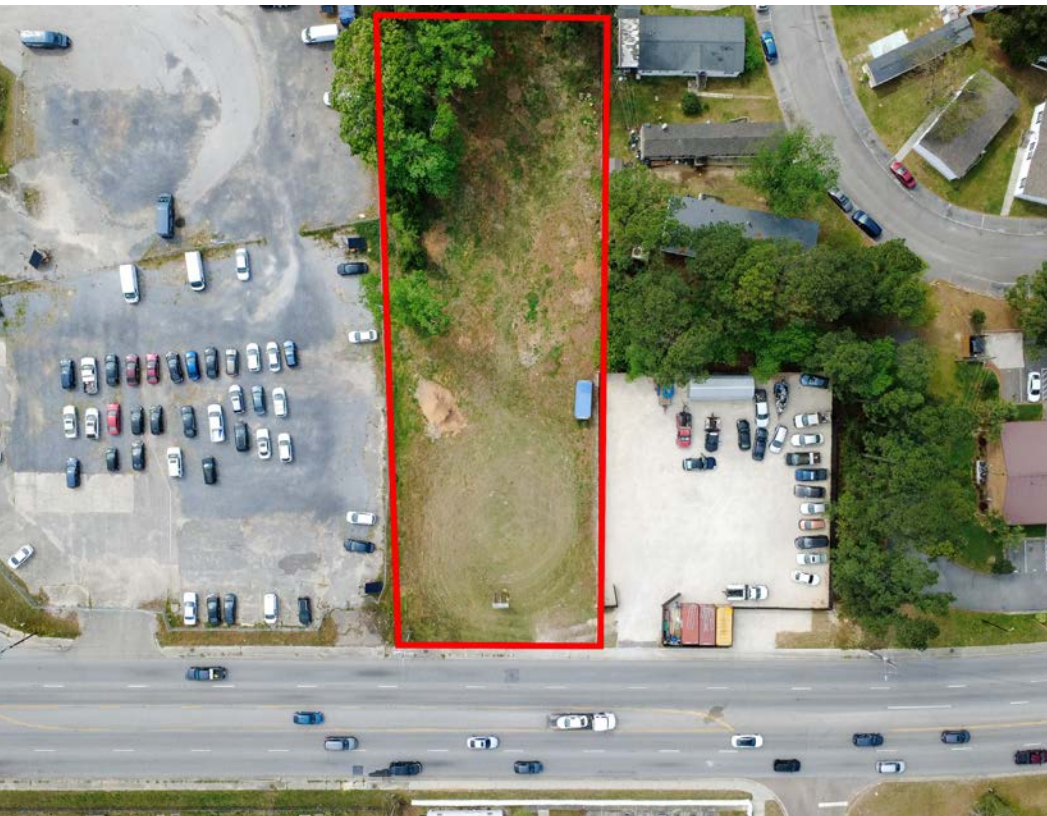
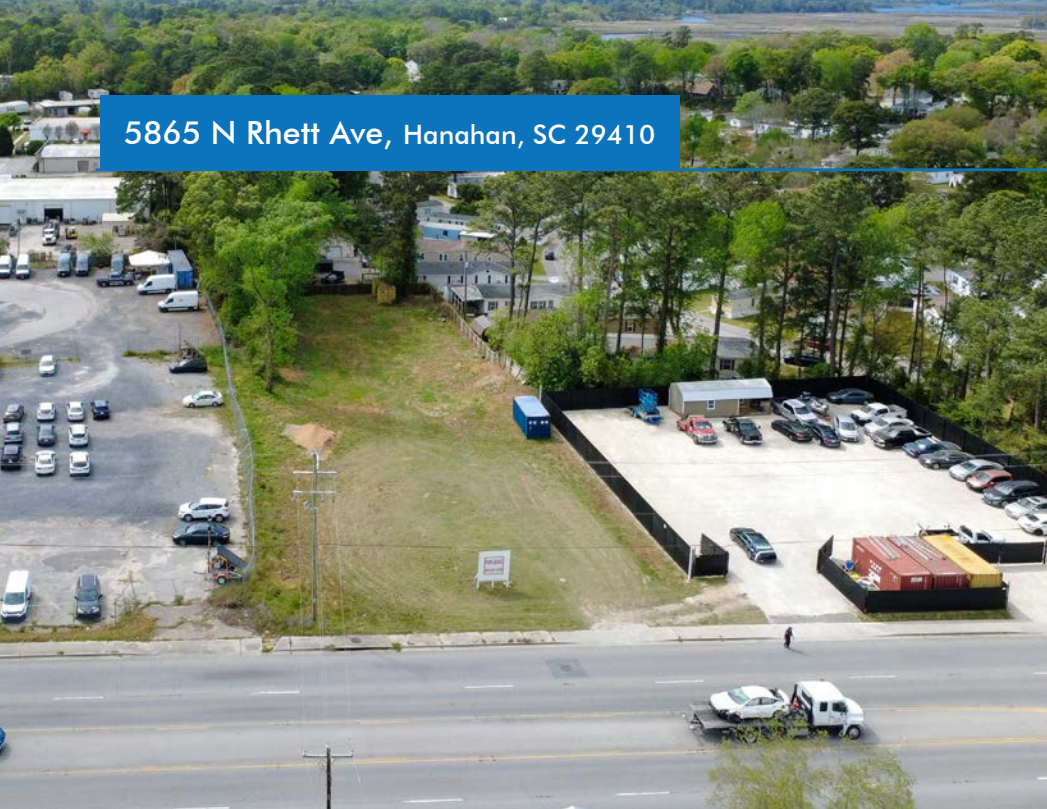
## PROPERTY HIGHLIGHTS

Asking \$4,800/month NNN for 0.84 acres of secured, fenced storage yard available for Lease on N Rhett Avenue. Ideal for contractors or service vehicle parking. Site has immediate access to I-526 and is located around the corner from the North Charleston Port. Ownership is committed to delivering a fully improved laydown yard upon Zoning approval to meet Tenant specifications. The graveled yard photo/enhancement is for illustrative purposes only and reflects the property's potential condition.

## PROPERTY SPECS

LEASE RATE	\$4,800/MONTH NNN
PARCEL ID	266-05-02-065
COUNTY	BERKELEY
LOT SIZE	0.84 ACRES
ZONING	HANAHAN - CG

5865 N Rhett Ave, Hanahan, SC 29410



# LOCATION

5865 N Rhett Ave, Hanahan, SC 29410

SUMMERVILLE

GOOSE CREEK



HANAHAN



5865 N RHETT AVE  
HANAHAN, SC 29410

NORTH CHARLESTON

DANIEL ISLAND

WEST ASHLEY

MT PLEASANT

CHARLESTON



## CONTACTS:

**Crawford Riddle**  
Associate  
+1.864.423.4973  
crawford.riddle@  
harborcommercialpartners.com

**Tradd Varner, SIOR**  
Partner  
+1.843.532.1684  
tradd.varner@  
harborcommercialpartners.com

**Todd Garrett, CCIM, SIOR**  
Managing Partner  
+1.843.408.8846  
todd.garrett@  
harborcommercialpartners.com

 **Harbor**  
COMMERCIAL PARTNERS

harborcommercialpartners.com