

FOR LEASE

703 N Larch St | Sisters, OR 97759



Sisters Office For Lease

Beautiful professional office in Sisters industrial area.

Excellent floor plan for mental health services, chiropractic, physical therapy or other ancillary medical.

Floor plan includes large reception with room for records and operations, waiting area, three private offices, kitchenette and private, in-suite restroom.

Wood finishes throughout.

14 parking spaces including ADA.

Easy access to Hwy 20 East and West: 0.4 miles via Larch and 0.7 miles via Barclay.

Co-tenants include Deschutes County Sherriff's Office and Black Butte Veterinary.

OFFERING SUMMARY

SUITES B	1,500 SF
LEASE RATE	\$1.20/SF/MO+NNN
Modified NNN RATE	\$0.34/SF/MO
BUILDING SIZE	6,000 SF
LAND SIZE	0.81 AC
YEAR BUILT	1999
ZONING	LI (Light Industrial)

10 MILE DEMOGRAPHICS



12,893

TOTAL POPULATION



5,535

TOTAL HOUSEHOLDS



\$109,838

AVG HH INCOME



Katy Haines

Licensed Oregon Principal Broker

+1 541 300 0395

khaines@naicascade.com

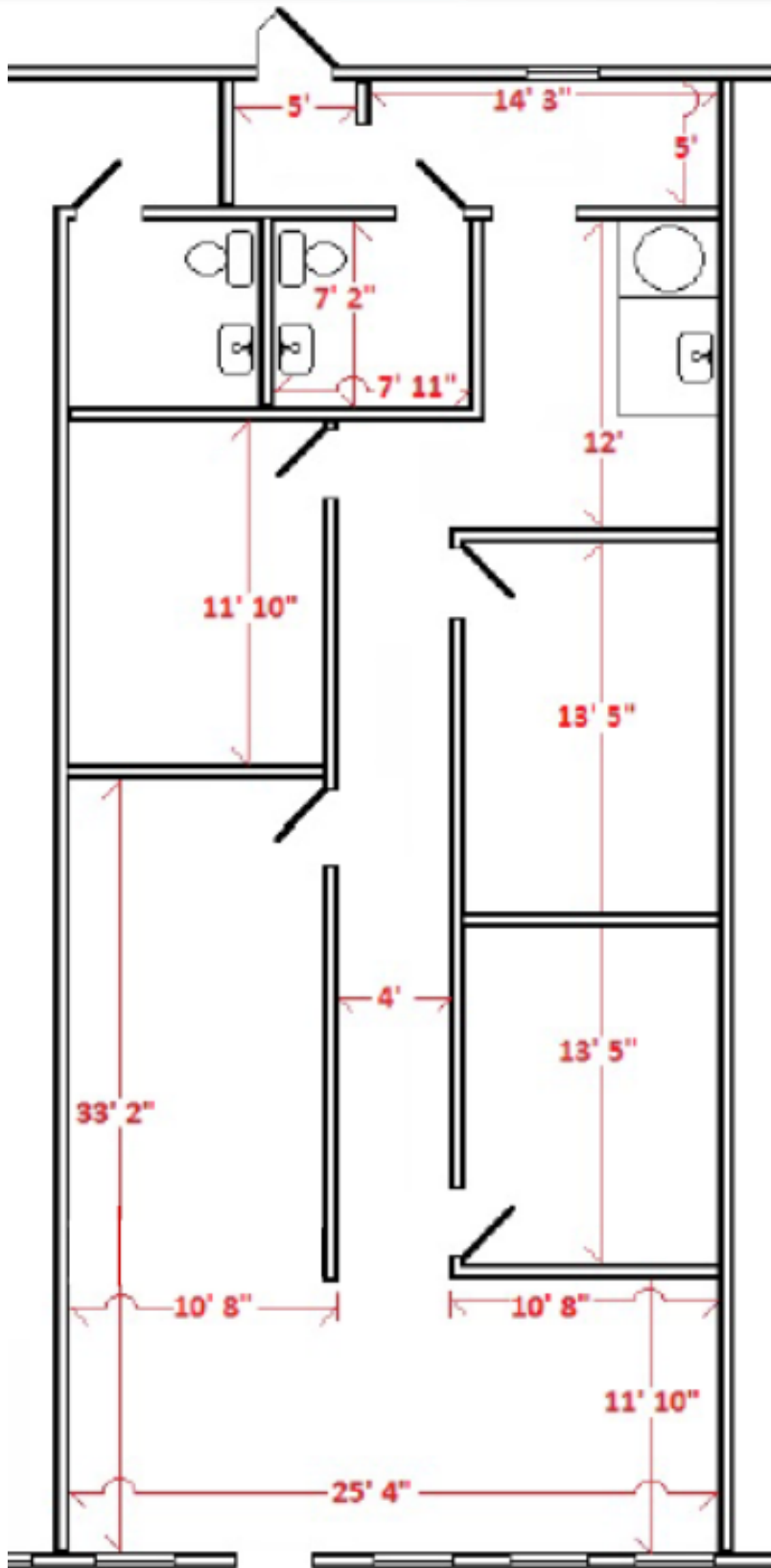
The information contained in the Marketing Brochure has been obtained from sources we believe to be reliable; however, Broker has not verified, and will not verify, any of the information contained herein, nor has Broker conducted any investigation regarding these matters and makes no warranty or representation whatsoever regarding the accuracy or completeness of the information provided including but not limited to square footage. All potential purchasers must take appropriate measures to verify all of the information set forth herein.



243 SW Scalehouse Lp
Suite 3A
Bend, OR 97702
NAICascade.com

FOR LEASE

703 N Larch St | Sisters, OR 97759



 Katy Haines
Licensed Oregon Principal Broker
+1 541 300 0395
khaines@naicascade.com

The information contained in the Marketing Brochure has been obtained from sources we believe to be reliable; however, Broker has not verified, and will not verify, any of the information contained herein, nor has Broker conducted any investigation regarding these matters and makes no warranty or representation whatsoever regarding the accuracy or completeness of the information provided including but not limited to square footage. All potential purchasers must take appropriate measures to verify all of the information set forth herein.

 NAI Cascade

FOR LEASE

703 N Larch St | Sisters, OR 97759



Katy Haines

Licensed Oregon Principal Broker

+1 541 300 0395

khaines@naicascade.com

The information contained in the Marketing Brochure has been obtained from sources we believe to be reliable; however, Broker has not verified, and will not verify, any of the information contained herein, nor has Broker conducted any investigation regarding these matters and makes no warranty or representation whatsoever regarding the accuracy or completeness of the information provided including but not limited to square footage. All potential purchasers must take appropriate measures to verify all of the information set forth herein.

NAICascade