



INTRODUCING

## 2 Byram Brook Place

ARMONK, NY 10504

900  
SQFT

\$2,500 /mo + utilities  
OFFERED AT

AVAILABLE JANUARY 1ST

### PROFESSIONAL OFFICE SPACE | PREVIOUSLY CHIROPRACTIC OFFICE

- Recently updated lobby, and bathrooms
- Full reception area
- Three treatment rooms
- Fully wired for phone and IT applications
- Heat included
- Individual adjustable thermostat
- Entry on grade level of rear parking lot
- Security system with key FOB entry
- 24-hour access to building with key FOB
- Back-up generator
- Abundant onsite parking



**DARREN GORDON**

Real Estate Salesperson

M 917-596-4789 O 914.798.4900  
darrengordon@houlihanlawrence.com  
darrengordon.houlihanlawrence.com



**HOULIHAN LAWRENCE**  
COMMERCIAL

800 Westchester Avenue, Suite N-517  
Rye Brook, NY 10573  
www.houlihanlawrence.com/commercial/



# PHOTOS



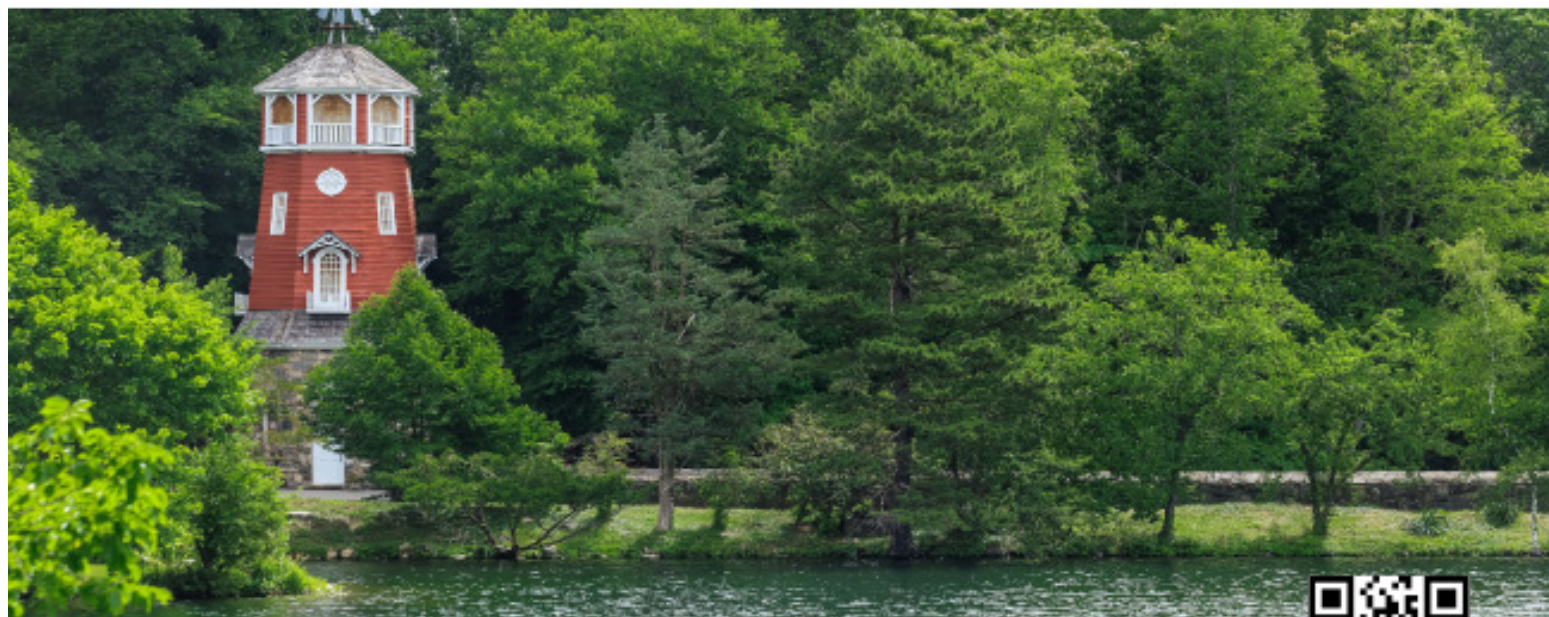


PHOTOS





# Discover Armonk



4,438  
POPULATION

35  
MILES TO NYC

6.1  
SQUARE MILES



## HAMLET OF ARMONK

Armonk is a hamlet in the town of North Castle located 35 miles from mid-Manhattan. Known for its natural beauty set amidst leafy panoramas and rolling hills, this bucolic corner of Westchester County is a thriving community of gracious single-family homes, secluded estate properties, and luxurious condominiums and townhouses. Village life is centered around a flourishing downtown with cafes, shops, pedestrian square and professional offices. Its vibrant cultural scene is highlighted by TheArmonk Outdoor Art Show, the Fol-de-Rol country fair, the Armonk Players theatre company, and annual parades. The Smith Tavern, a landmark of the Revolutionary War; the Bedford Road Historic District; and the Withoeft House are among the notable sites listed on the National Register of Historic Places. Nationally acclaimed Byram Hills schools provide outstanding public education. Its accessible location enjoys convenience to White Plains, Greenwich, Stamford, and New York City.

## EDUCATION

Coman Hill Elementary School (914) 273-4183  
Wampus Elementary School (914) 273-4190  
H.C. Crittenden Middle School (914) 273-4250  
Byram Hills High School (914) 273-9200

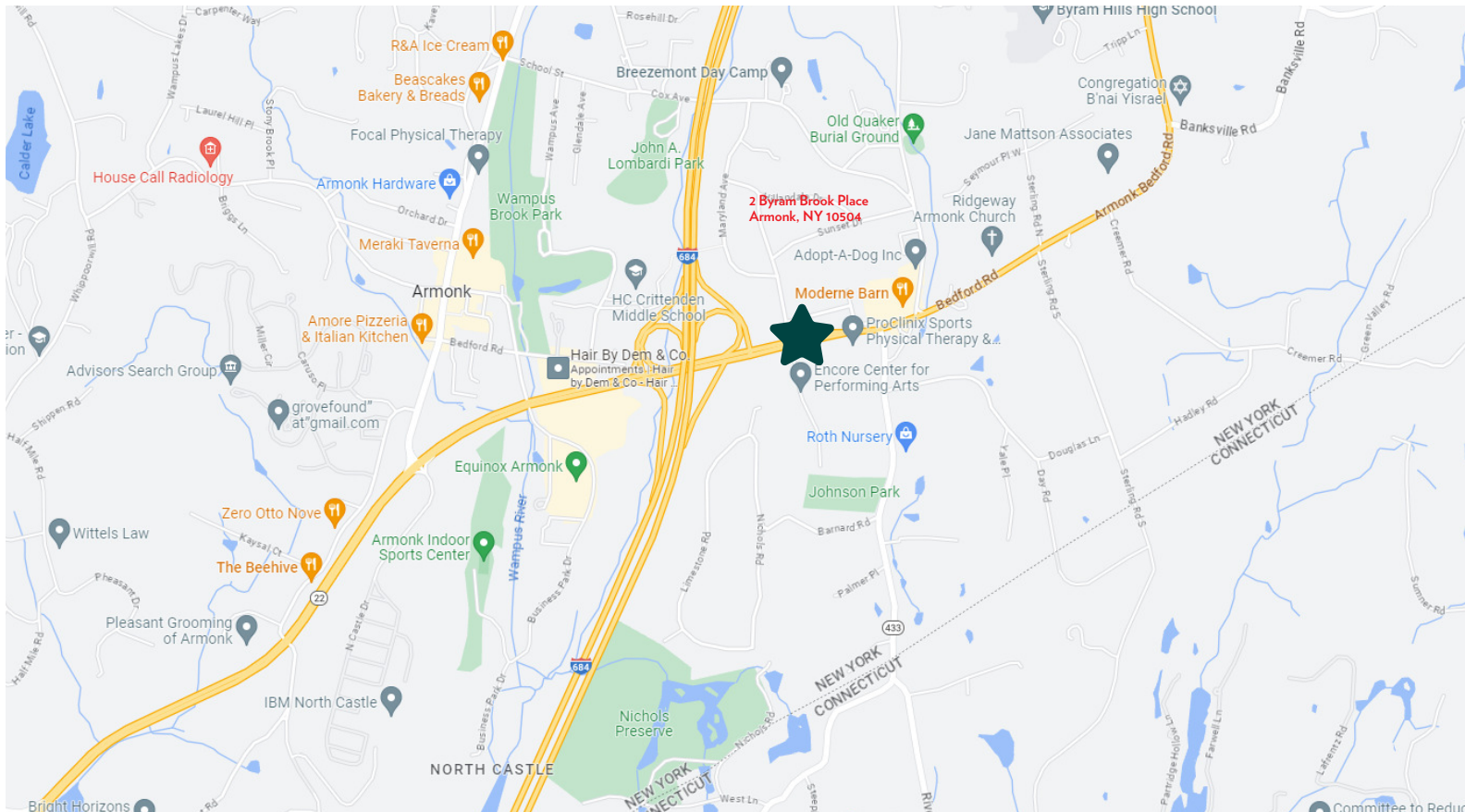
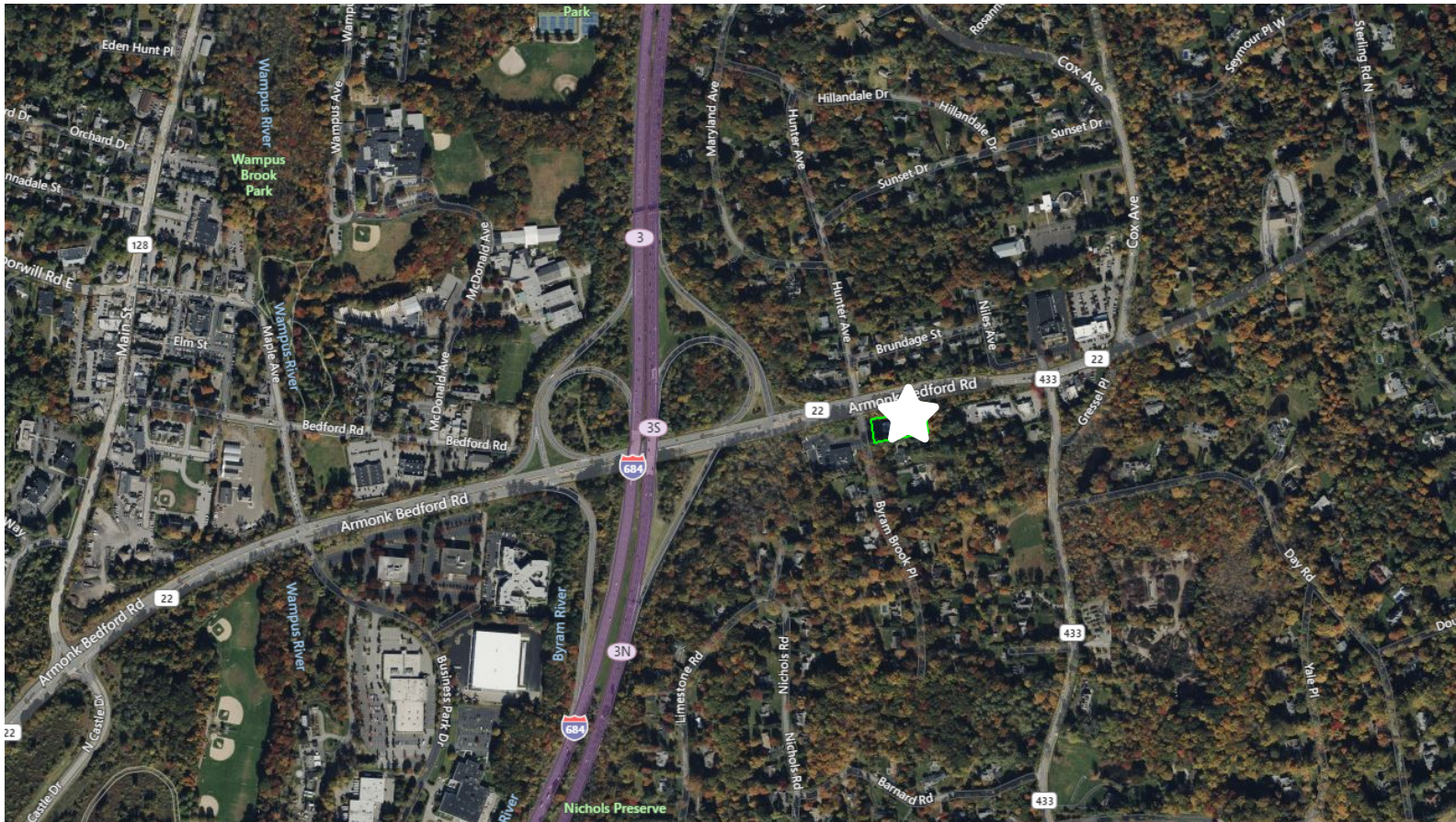
## PARKS & RECREATION

A variety of local recreation is available, from wildlife sanctuaries for nature walks, to golf and tennis clubs. Armonk currently enjoys over 60 acres of parkland. Park facilities include a community center, softball/baseball fields, tennis courts, basketball courts, platform tennis courts, handball wall, picnic pavilion, cinder track, gazebo with quiet sitting areas and playgrounds. The Recreation Department of the Town of North Castle offers a selection of over 150 programs, for pre-school to senior citizens. The Town also offers a variety of summer camp programs.

FOR MORE INFORMATION AND HELPFUL TOWN LINKS VISIT [HOULIHANLAWRENCE.COM](http://HOULIHANLAWRENCE.COM)



# MAPS



HOULIHAN LAWRENCE  
COMMERCIAL