

FOR SALE OR LEASE
68,000 SF CLASS A OFFICE SPACE



3742 TYNDALE DRIVE

GERMANTOWN, TN 38125

CBRE

BUILDING INFORMATION

BUILDING SIZE: 75,000 SF

FLOOR SIZES: 37,500 SF (2 Floors)

EXPANDABLE: Yes - By up to 25,000 additional SF

SUB-DIVISIBLE: Yes

AVAILABLE: NOW

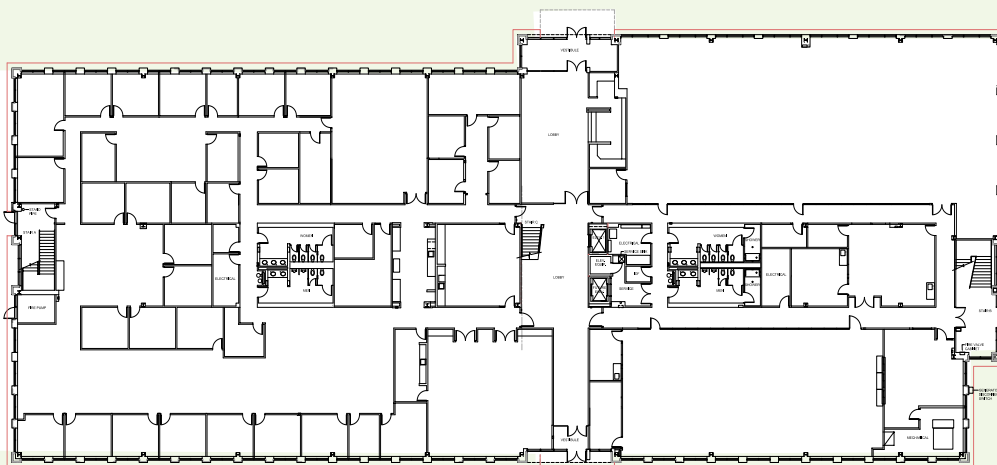
BACKUP GENERATOR: Yes

NAMING/SIGNAGE: Yes. Both In-Ground and On-Building Available

PRICING: Call for Pricing



1ST FLOOR



BUILDING HIGHLIGHTS



WELL MAINTAINED
BUILDING AND GROUNDS



OVER 300 SURFACE
PARKING SPACES



FAST ACCESS TO HIGHWAY 385
AND INTERSTATE 240



NEWLY CONSTRUCTED IN 2003



3 CHAMPIONSHIP
GOLF COURSES NEARBY

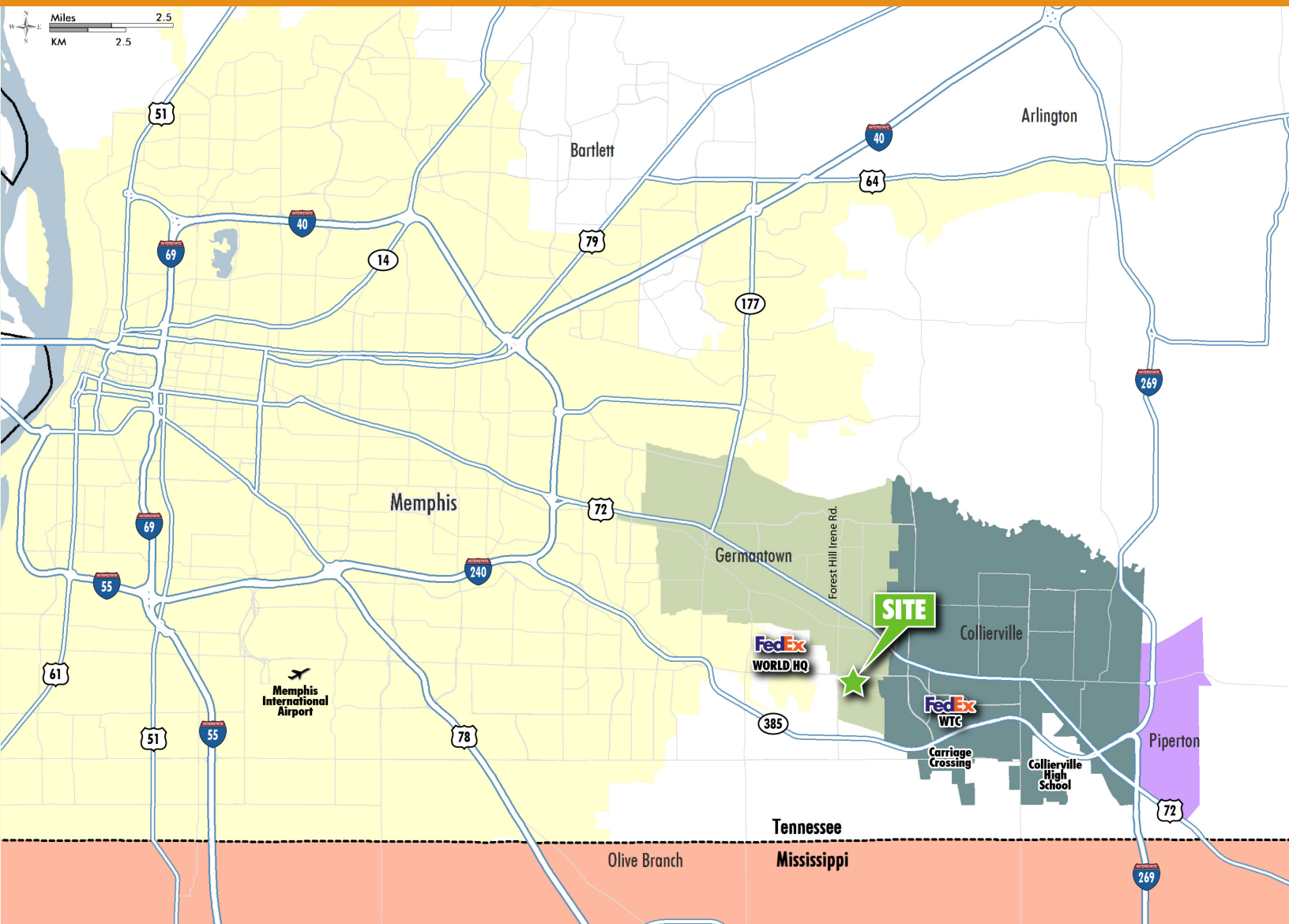


CLOSE TO FEDEX
WORLD HEADQUARTERS



ABUNDANCE OF NEARBY
RESTAURANTS, STORES AND BANKS





FOR MORE INFORMATION,
PLEASE CONTACT

RON KASTNER

Senior Vice President

+1 901 260 1050

ron.kastner@cbre.com