

8141 Hull Street Road

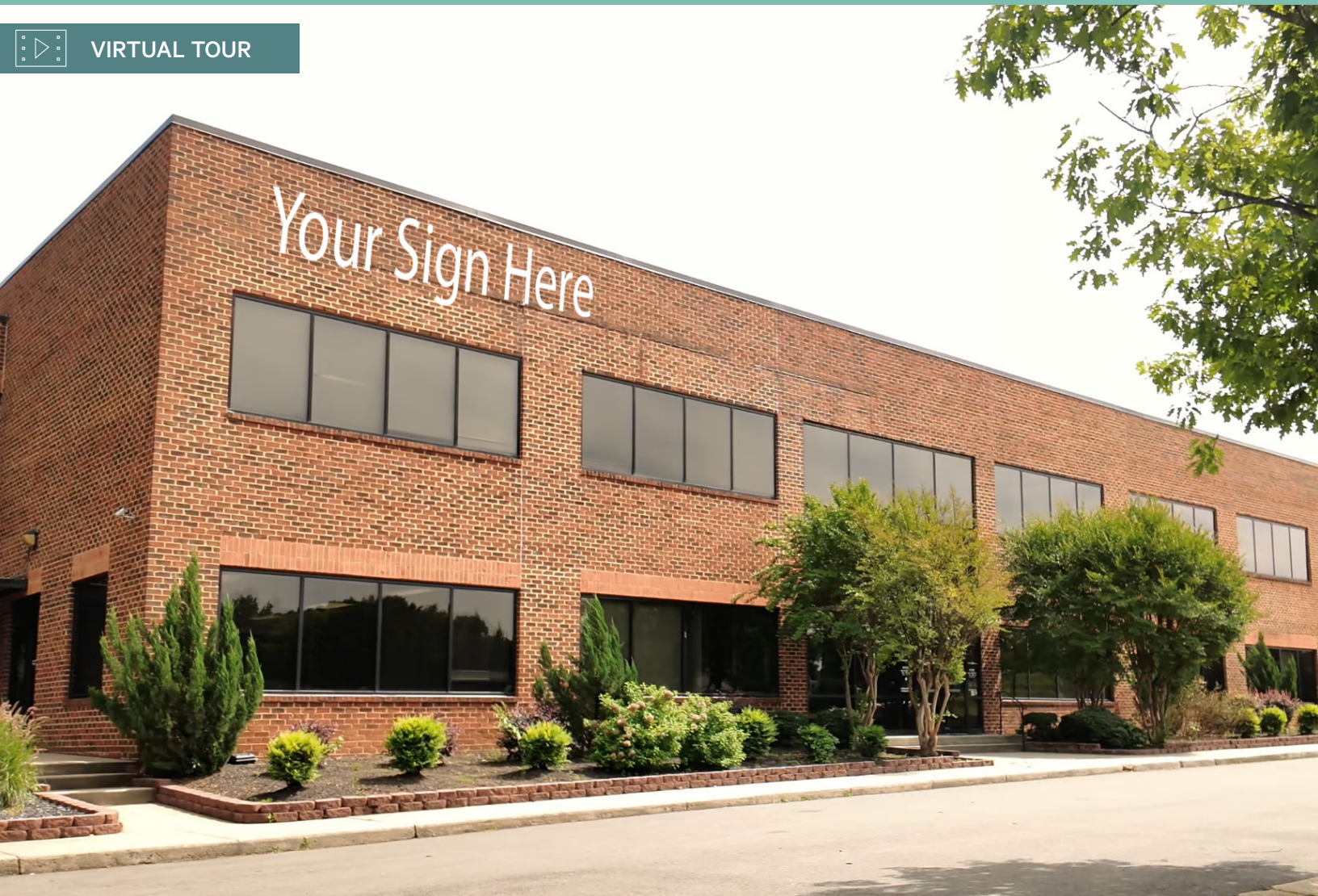
\$4.2M | \$13.00/SF, NNN

8141 Hull Street Road
North Chesterfield, Virginia 23235

Prominent Building Signage and Visibility on Route 360



VIRTUAL TOUR



8141 Hull Street Road

North Chesterfield, Virginia 23235



Property Overview

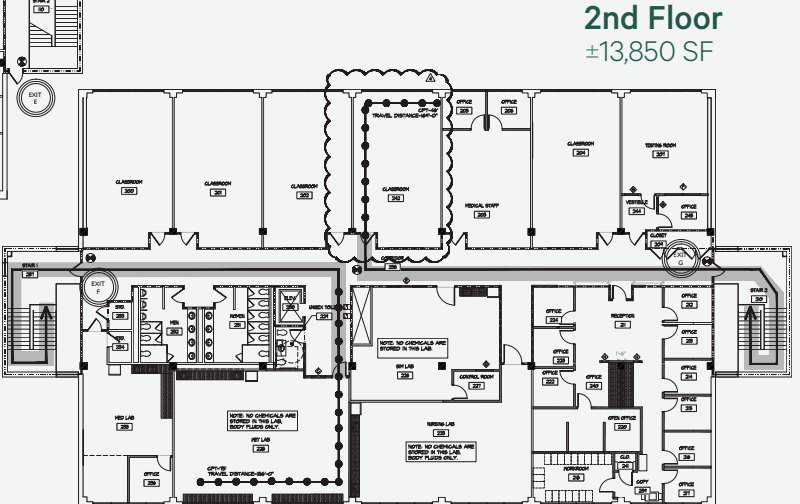
8141 Hull Street Road offers excellent visibility along Route 360, with opportunities for prominent building and monument signage. The building features abundant glass throughout, along with 10-foot ceilings across two floors. It is well-suited for a variety of uses, including schools, medical facilities, churches, daycares, behavioral health services, and large back office operations. This versatile property presents an ideal opportunity for businesses looking to establish a prominent location in a thriving community.

Lot Size	3.63 Acres
Building Size	±27,700 SF
Year Built	1991
Ceiling Heights	10'
Signage Opportunities	Building and Monument along Route 360
Building Features	Café, outdoor space, water and sewer throughout
Parking	225 spaces (8.12 per 1,000 SF ratio)
Lease Rate	\$13.00/SF, NNN (est. \$7.50/SF)
Sale Price	\$4,200,000



Building Floor Plans

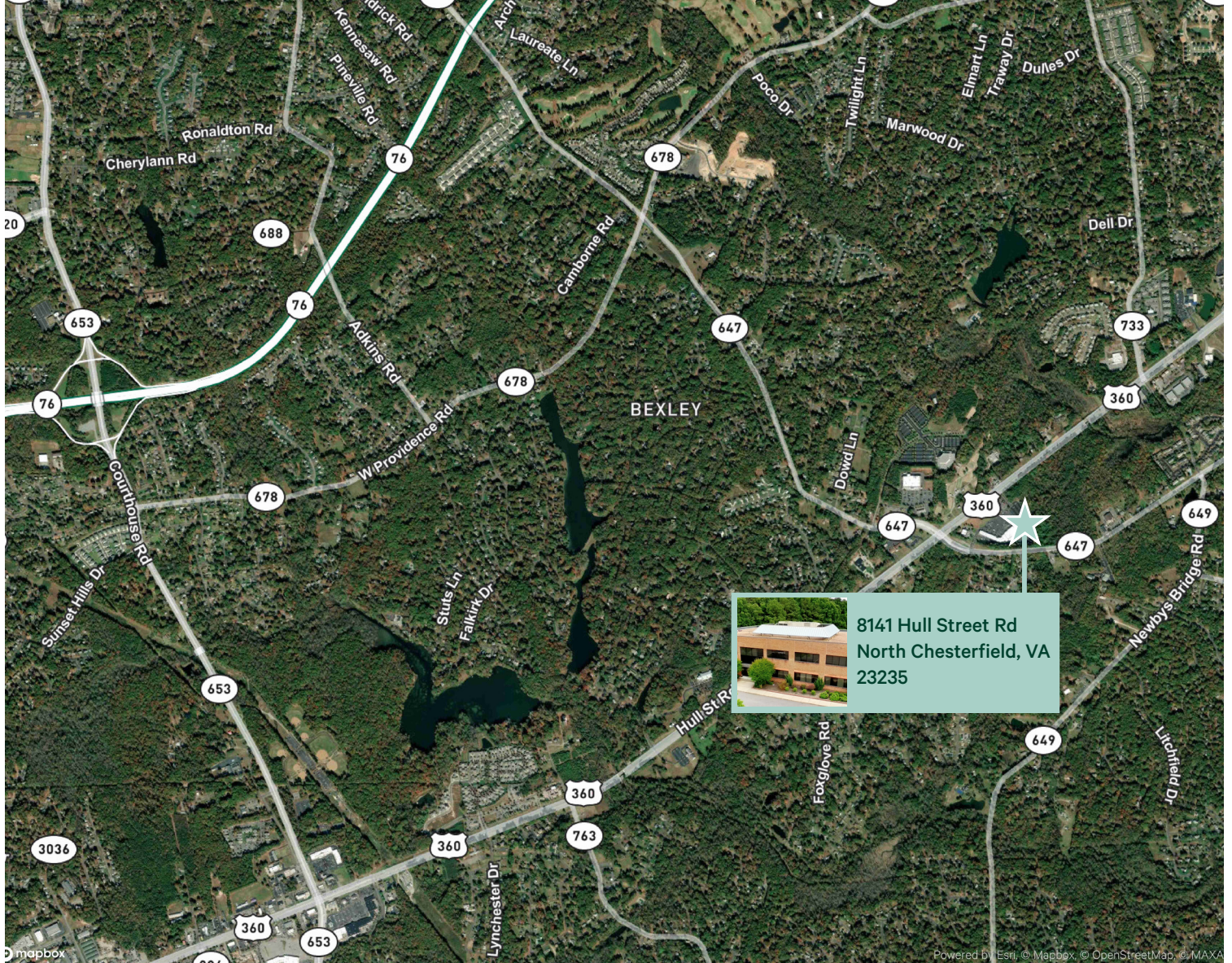
Total SF: ±27,700



8141 Hull Street Road

North Chesterfield, Virginia 23235

For Sale or Lease



Contact Us

Matt Hamilton

Senior Vice President
+1 804 401 4005
matt.hamilton@cbre.com

Chris Wallace

Senior Vice President
+1 804 401 4001
chris.wallace@cbre.com

CBRE

1802 Bayberry Court
Suite 201
Richmond, VA 23226

© 2026 CBRE, Inc. All rights reserved. This information has been obtained from sources believed reliable, but has not been verified for accuracy or completeness. You should conduct a careful, independent investigation of the property and verify all information. Any reliance on this information is solely at your own risk. CBRE and the CBRE logo are service marks of CBRE, Inc. All other marks displayed on this document are the property of their respective owners, and the use of such logos does not imply any affiliation with or endorsement of CBRE. Photos herein are the property of their respective owners. Use of these images without the express written consent of the owner is prohibited.

www.cbre.com/richmond