

FOR LEASE
MORRIS PLAINS, NJ

**UNDER NEW OWNERSHIP!
RENOVATIONS UNDERWAY!**

PREMIER DOWNTOWN OFFICE DESTINATION

AVAILABLE SPACES

- Suite 104-105: +/- 1990 sf
- Suite 106: +/- 1150 sf
- Suite 108: +/- 487 sf
- Suite 113: +/- 773 sf
- Suite 202: +/- 992 sf
- Flexible lease terms available
- Ideal for satellite office –
Walking distance to NYC train!
- Monument signage available

BUILDING FEATURES

- Building size: +/- 28,000 sf
- 2 Story building with elevator
- Downtown location with excellent visibility
- On-site parking plus street parking
- WALKING DISTANCE to train station, bus stop,
banks, post office, salons & restaurants
- ½ mile from Hanover Avenue
- Close to Routes 10, 24, 202, I-80 & I-287

Call for Pricing

For more information contact:

HELENE ELBAUM

C: 201.320.3430

O: 973.884.4444 ext. 26

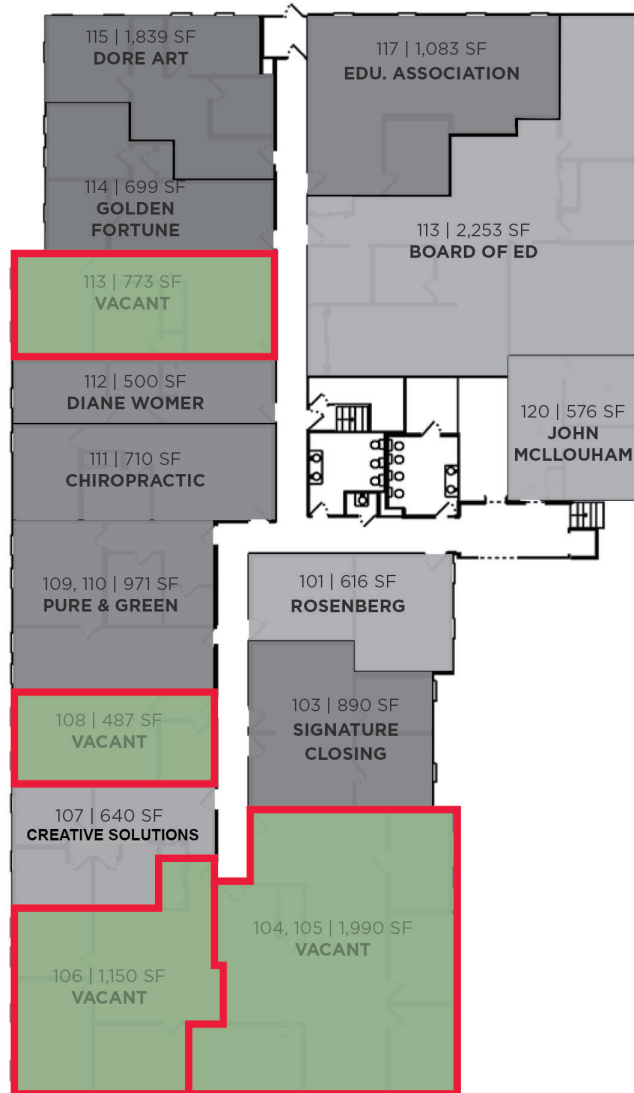
helbaum@newmarkrealestate.com



NewmarkRealEstate.com | 973.884.4444 | 7 E. Frederick Place Suite 500 Cedar Knolls New Jersey 07927

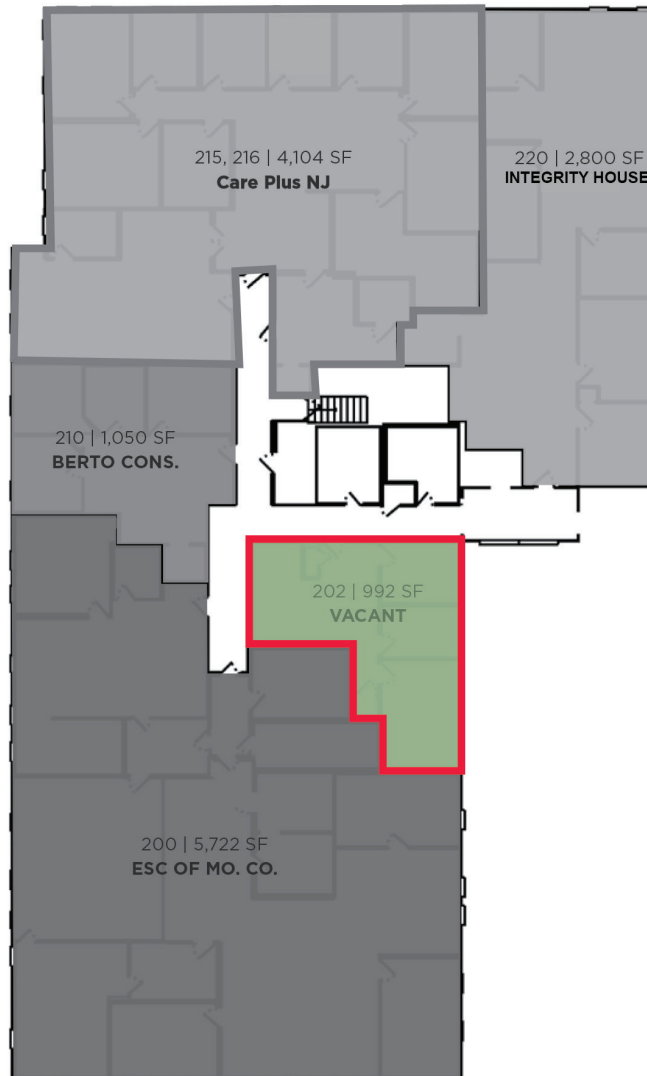
2024 Newmark Associates CRE. Information obtained from sources deemed to be reliable. However, no guarantee, warrant or representation is made as to accuracy of the information presented which is submitted subject to errors, omission, change of price, rental or other conditions, prior sale lease, financing or withdrawal without notice. Projections, opinions, assumptions or estimates are provided for example only, and may not represent current or future performance. Interested parties should consult their tax and legal advisors and conduct a thorough investigation of the property and any prospective transaction.

First Floor



Floor Plan Not Drawn to Scale.

Second Floor



Floor Plan Not Drawn to Scale.