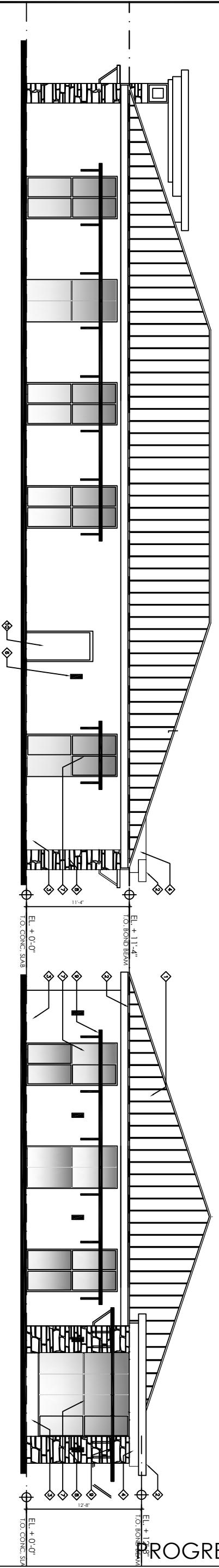


**A** FRONT ELEVATION (EAST FACING)  
SCALE: 3/16" = 1'-0"



**B** SIDE ELEVATION (NORTH FACING)  
SCALE: 3/16" = 1'-0"

**C** REAR ELEVATION (WEST FACING)  
SCALE: 3/16" = 1'-0"

**D** SIDE ELEVATION (SOUTH FACING)  
SCALE: 3/16" = 1'-0"

- EXTERIOR ELEVATION NOTES**
- 1 26 GAUGE GALV. METAL ROOFING.
  - 2 GALV. METAL DRIP DECK TO MATCH ROOF W/ P.I. FASCIA BOARDS
  - 3 PAINTED LIGHT TEXTURE CEMENT PLASTER FIN.
  - 4 PAINTED SMOOTH TEXTURE CEMENT PLASTER FIN.
  - 5 PRECAST CONC. CAP
  - 6 EXTERIOR WALL LIGHTS
  - 7 PGT OR EQUIVALENT STORERONT WINDOWS AND DOORS.
  - 8 ADHERED MANUFACTURED STONE VENEER.
  - 9 SUNSHADE CANOPY.
  - 10 PAINTED H.A. EXT. DOOR.
  - 11 SIGNAGE ON ALUM. FRAME W/ PAINTED SMOOTH TEXTURE PLASTER.
  - 12 ALUM. FIN. CANOPY.

PROGRESS SET - NOT FOR CONSTRUCTION

MK Architecture, LLC hereby reserves its common law copyright and other property rights in these plans, designs, arrangements and ideas. These ideas, plans and designs are not to be reproduced, changed or copied in any form or manner whatsoever, nor are they to be assigned to any third party without first obtaining the express written permission from MK Architecture, LLC. Contractors shall verify and be responsible for all dimensions and conditions of the job. MK Architecture, LLC shall be notified in writing of any variations or discrepancies from the dimensions, conditions and specifications shown by these drawings. All construction shall be in accordance with the current Florida Building Code.

SHEET  
A5.1



**MK Architecture LLC**  
8200 College Parkway, Suite 101  
Fort Myers, Florida 33919  
239.482.2121  
AA26003856 IB26001865  
www.MK-ARCH.com

PRELIMINARY DRAWING FOR  
**DR KASTER CHIROPRACTIC CLINIC**  
1539 BRANTLEY ROAD  
FORT MYERS, FLORIDA

No.	REVISIONS