

MID PINELLAS INDUSTRIAL FLEX SPACE

100% CLIMATE CONTROLLED



FOR LEASE

17,400-SF TOTAL Available or Divisible into two 8,700-SF Spaces

- 8,700-SF with 2,250-SF OFFICE
- 8,700-SF with 500-SF OFFICE

\$12.50 PSF NNN

8575 SOMERSET DRIVE
LARGO, FL 33773



NED WILLIS
NWILLIS@VECTORREALTY.COM
(727) 481-3356



ASHLEY WILLIS
AWILLIS@VECTORREALTY.COM
(727) 776-0290



SUMMARY

INTRODUCTION

Mid Pinellas 100% climate-controlled space located between Bryan Dairy Rd. and Ulmerton Rd. just East of Starkey Rd.

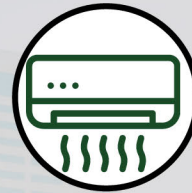
The space is in excellent condition and features an office area with 8 private offices, a conference room, reception/waiting, and breakroom.

The warehouse clear height is 26' at the peak and 17' at the eaves with 2 truck wells, 2 grade-level doors, LED lighting, and racking.



PROPERTY SIZE

17,400 Total SF Available
8,700-SF - 2,250-SF OFFICE
8,700-SF - 500-SF OFFICE



100% Climate Controlled



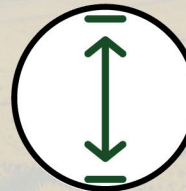
Racking in Place



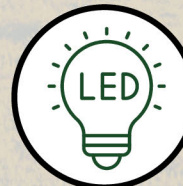
2 Truck Wells +
2 Grade Level Doors
12'x12'



42 Parking Spaces



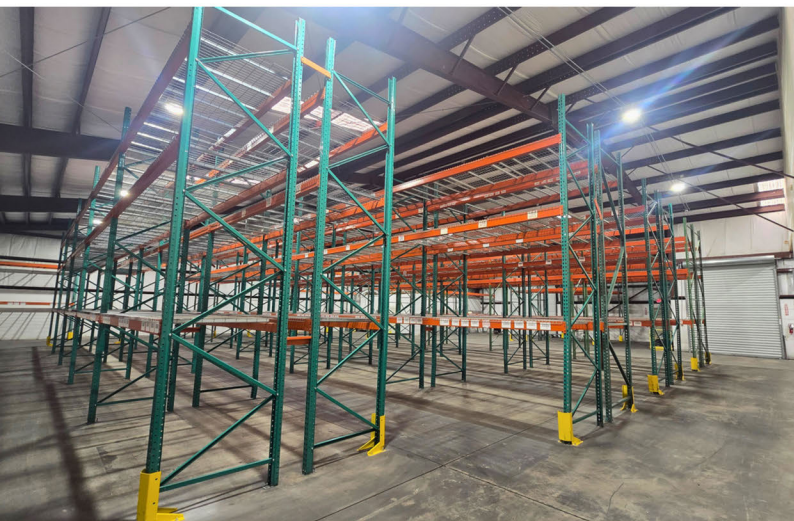
26' Clear Height at Peak



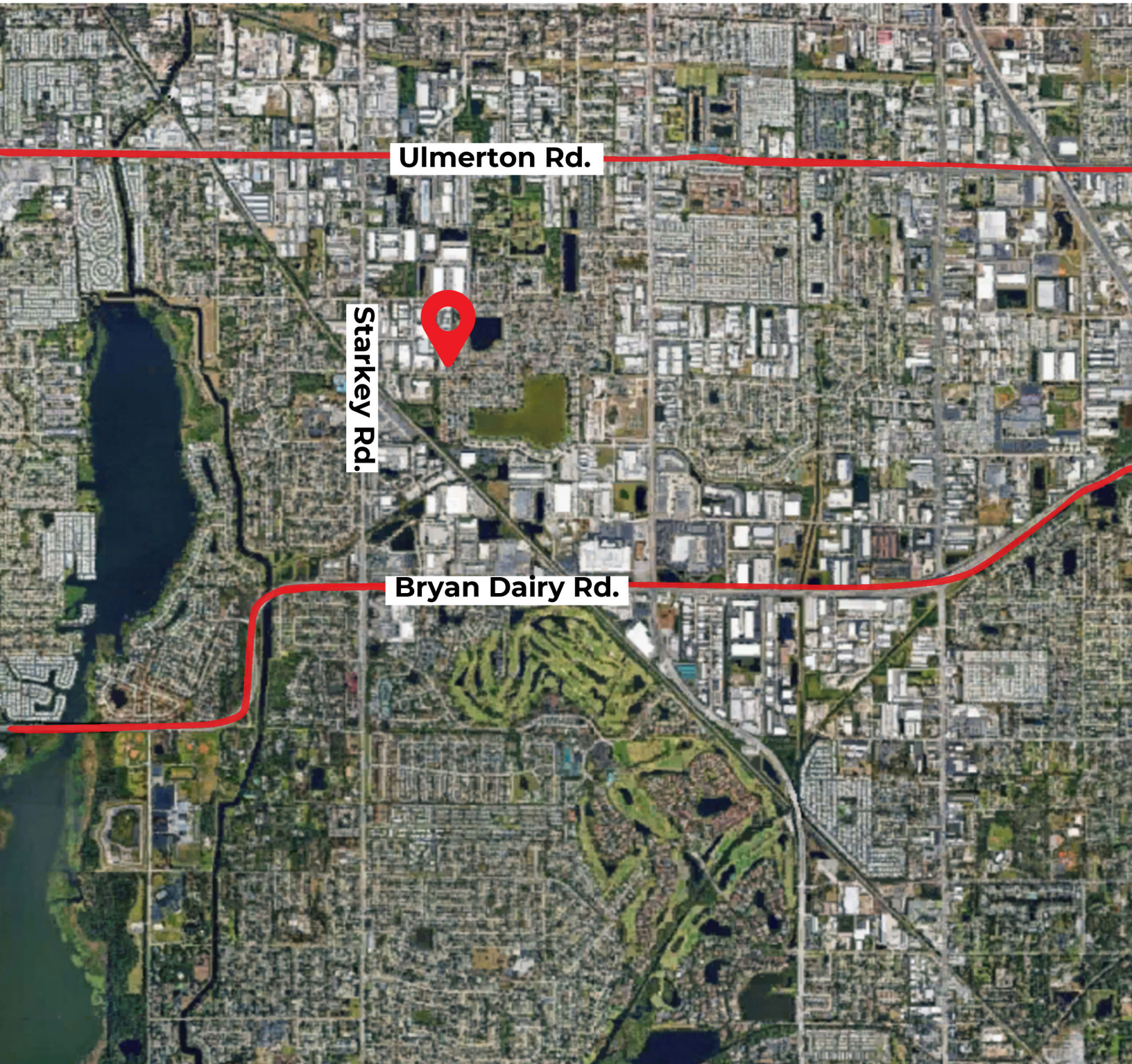
LED Lighting

o o o o

PHOTOS



MARKET MAP



FLOOR PLAN

17,400-SF TOTAL AVAILABLE

