



1000  
**MAXWELL**  
*Hoboken, NJ*

---

EXCLUSIVE LEASING AGENT



[1000MAXWELL-OFFICES.COM](http://1000MAXWELL-OFFICES.COM)

**NEW, MODERN,  
DISTINCTIVE LOBBY**



# 110,800 SF BLOCK

RESIDENTIAL

OFFICE

RETAIL

**TI-READY,  
CLASS A SPACE  
AVAILABLE**

Street-Level Retail ±11,000 SF

Loft-Style Office Space

Floor 2 ±16,000 SF

Floors 3 - 6 ±18,500 SF

Floor 7 ±16,500 SF

High-End Pre-Built Suites

- Short term leases
- 2,500 to 7,000 SF
- Summer 2023 delivery
- Parking is available

Custom Built Suites Available

# EASY ACCESS TO NYC



**UNRIVALED  
CONVENIENCE &  
ACCESSIBILITY**

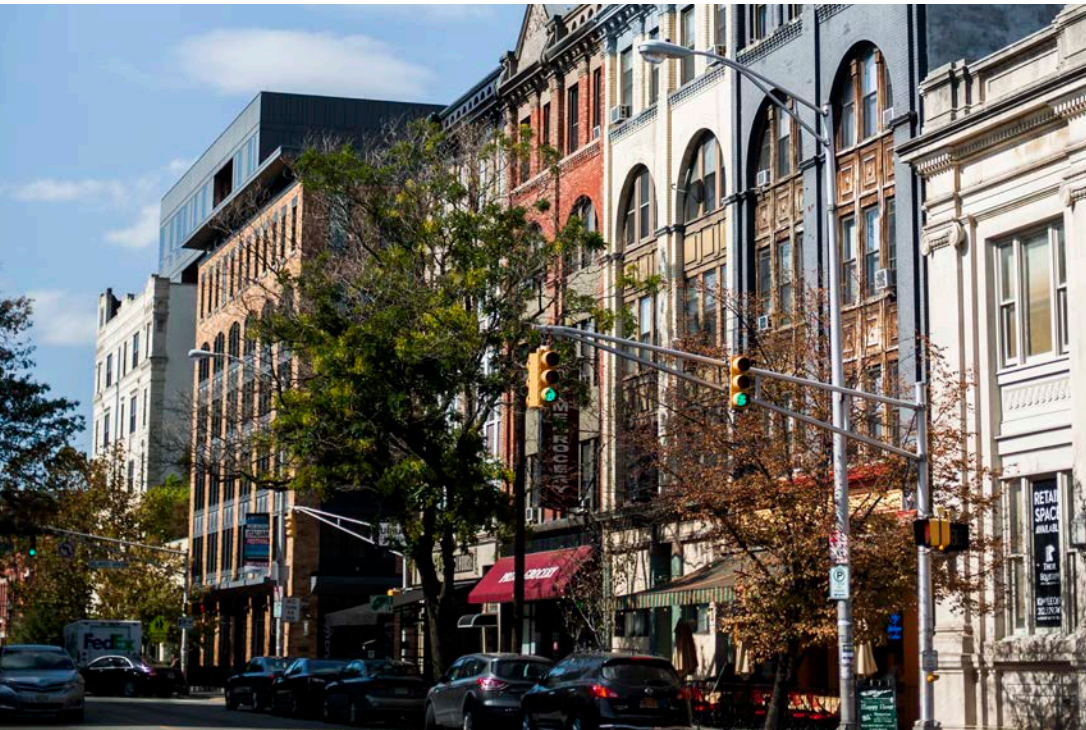
578  **TRAINS  
DAILY**

257  **BUSES  
DAILY**

161  **FERRIES  
DAILY**

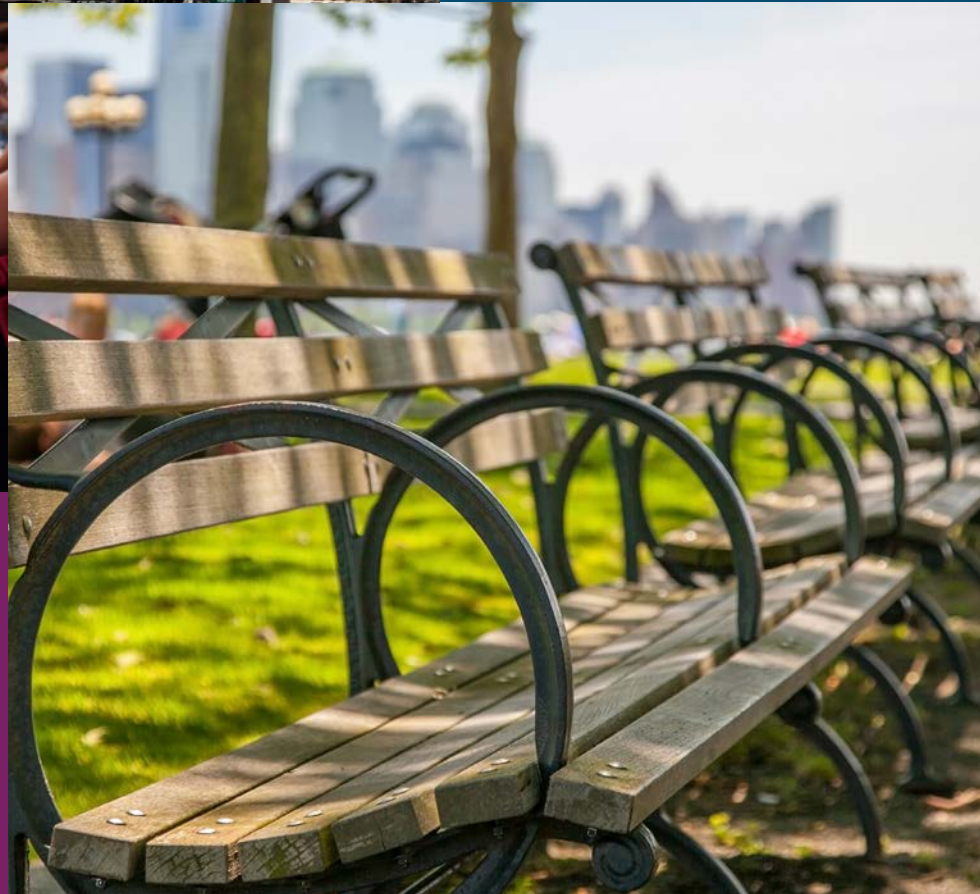


# ALL HOBOKEN HAS TO OFFER



## RANKED MOST WALKABLE CITY IN AMERICA

By Walkscore.com



## RANKED 2ND "BRAINIEST" TOWN IN NEW JERSEY

By NJ.com & Census Data

### FOOD/DRINK

1. La Isla Uptown
2. Pier 13
3. Amanda's
4. Sirenatta
5. Maxwell's Tavern
6. Sorellina Italian Kitchen
7. Anthony David's
8. Dino & Harrys Steakhouse
9. City Bistro
10. Bwè Kafe
11. Elysian Cafe
12. Starbucks
13. 10th & Willow
14. The Ale House
15. Stingray Lounge
16. Hudson Tavern
17. Dunkin Donuts
18. Pilsner Haus & Biergarten

### CONVENIENCE & SERVICE

19. Rite Aid
20. King's Food Market
21. Trader Joe's
22. ShopRite
23. Bright Horizons
25. Bow Tie Cinemas
26. Massage Envy
27. Hertz
28. Avis

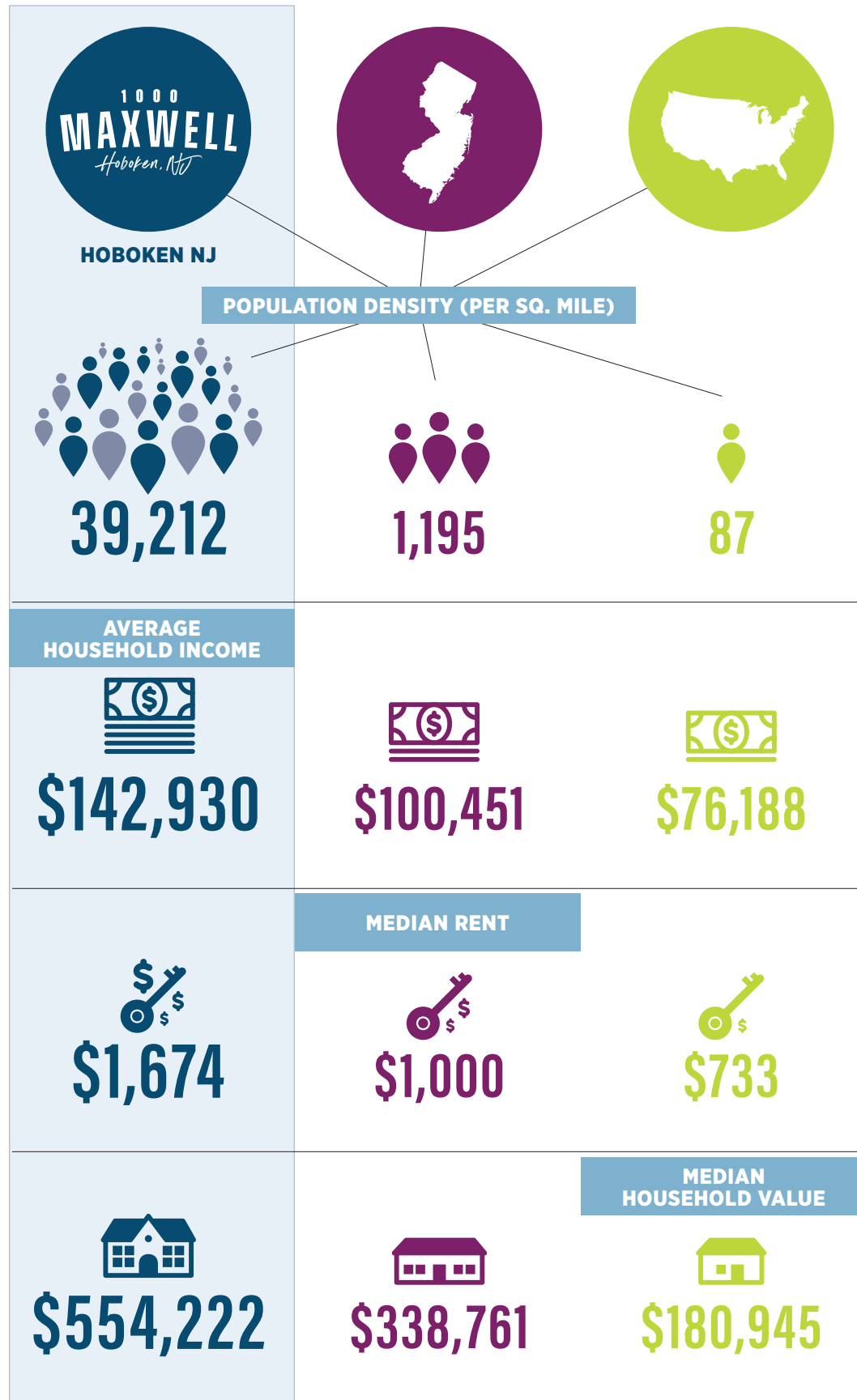
### PARKS

29. Maxwell Place Park
30. Elysian Park
31. Shipyard Park
32. Columbus Square Park
34. Hudson River Waterfront Walkway

**P** Parking Garage

**H** Gym/Workout Studio

# IN GOOD COMPANY



SOURCES: EASY ANALYTIC SOFTWARE, INC.; US CENSUS



# HIGH-END MODERN COMMON AREA RENOVATIONS



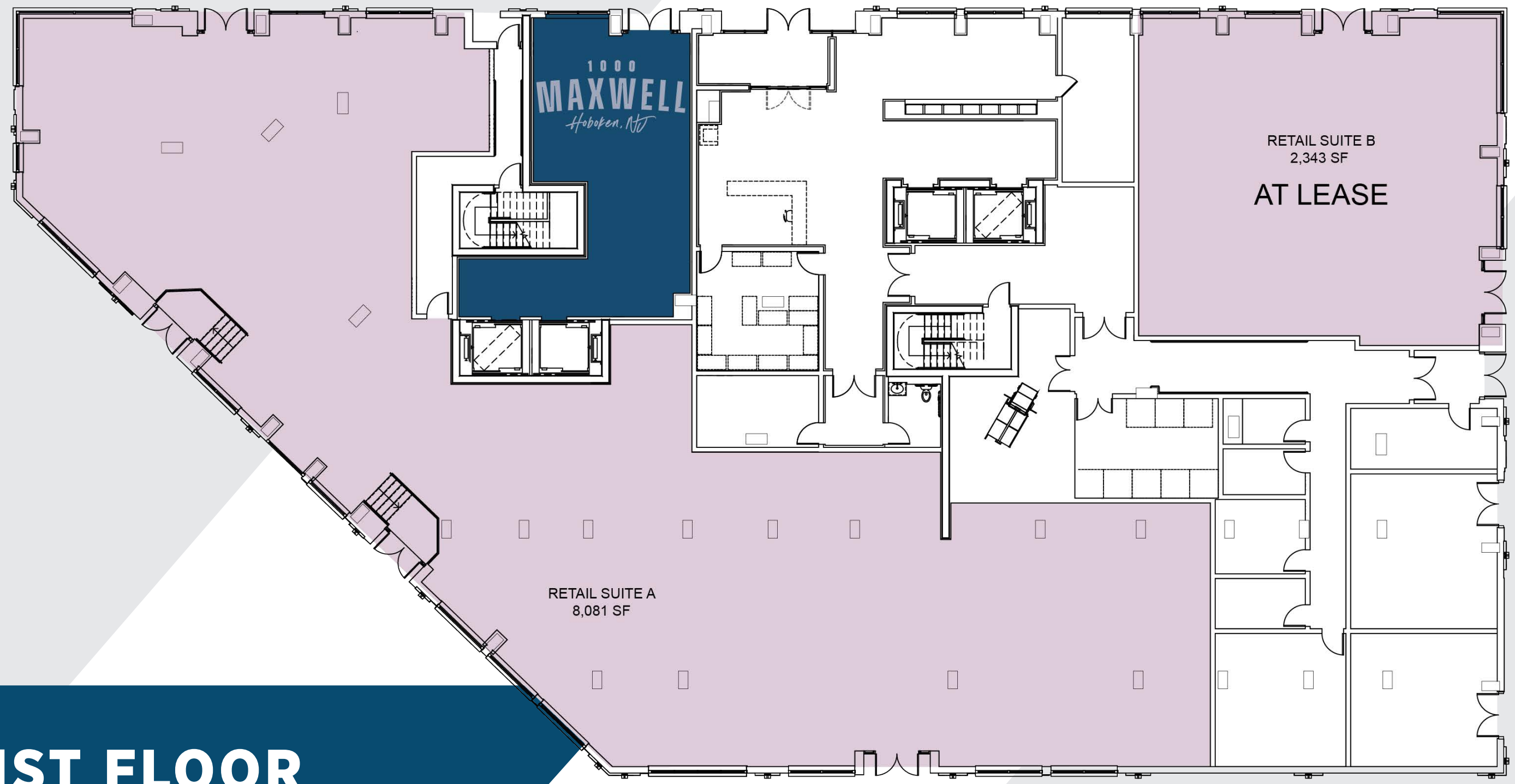
LOBBY

1000  
**MAXWELL**  
*Hoboken, NJ*

RETAIL SUITE B  
2,343 SF  
**AT LEASE**

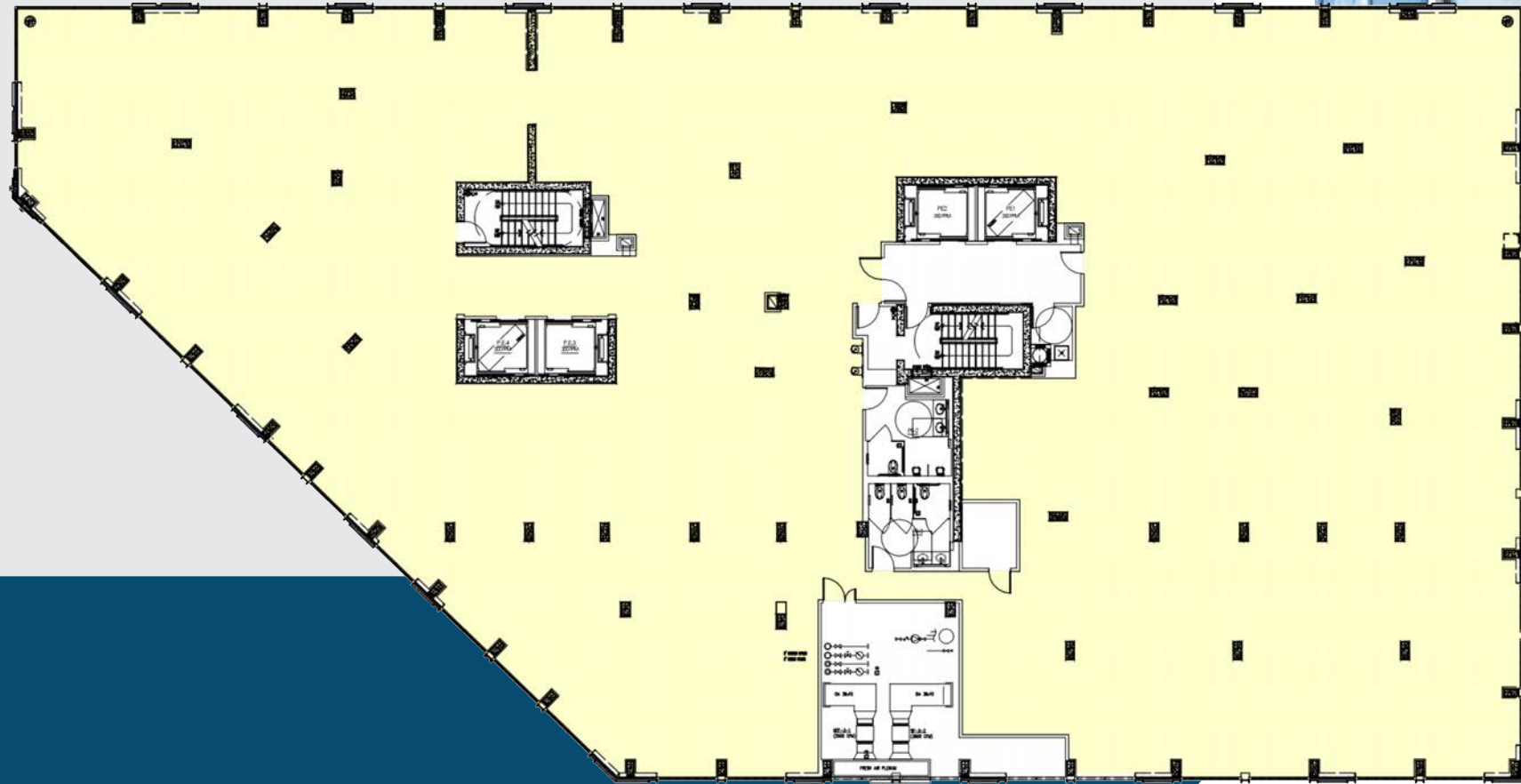
RETAIL SUITE A  
8,081 SF

# 1ST FLOOR RETAIL









# FLOORS 3-6

19,786 SF

CUSTOM UNITS TO SUIT | DIVISIBLE TO 4,000 SF

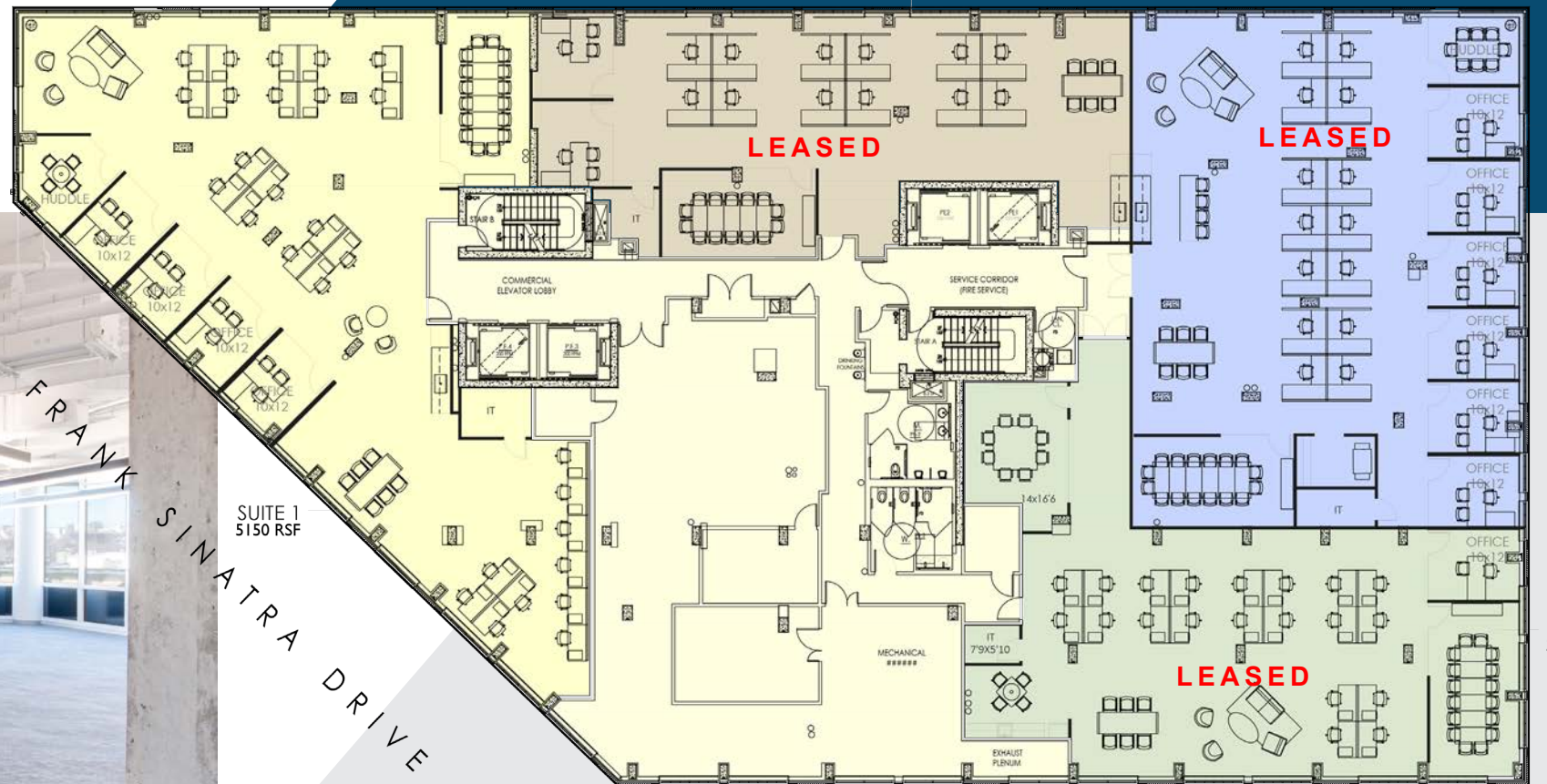


# 7TH FLOOR

16,197 SF

PRE-BUILT SUITES | DIVISIBLE TO 2,926 SF

2926 RSF  
SUITE 2



SUITE 3  
4708 RSF

MAXWELL LANE

SUITE 4  
3611 RSF



1000  
**MAXWELL**  
*Hoboken, NJ*

**MATT MCDONOUGH**

+1.908.403.4360

Matt.McDonough@jll.com

**MIKE PIETROWICZ**

+1.973.829.4749

Mike.Pietrowicz@jll.com

**1000MAXWELL-OFFICES.COM**



EXCLUSIVE BROKER

Although information has been obtained from sources deemed reliable, JLL does not make any guarantees, warranties or representations, express or implied, as to the completeness or accuracy as to the information contained herein. Any projections, opinions, assumptions or estimates used are for example only. There may be differences between projected and actual results, and those differences may be material. JLL does not accept any liability for any loss or damage suffered by any party resulting from reliance on this information. If the recipient of this information has signed a confidentiality agreement with JLL regarding this matter, this information is subject to the terms of that agreement. ©2024 Jones Lang LaSalle Brokerage, Inc. All rights reserved.