

STREETERVILLE  
CHICAGO

## 40 East Huron - Suite 300

8,928 RSF, MOVE-IN READY SPEC SUITE

R  
2  
COMPANIES







# 40 E Huron St - Suite 300

STREETERVILLE, CHICAGO

- 8,928 RSF, Fully Furnished Spec Suite
- Move-In Ready with Furniture Included
- Professionally Designed
- Previously Occupied by R2 (Building Developer)
- Tons of Light with Three Sides of Exposures
- 19 Offices and One Conference Room, all with Operable Windows
- Generous and Open, Brand New Kitchen
- New Flooring, Lighting, and Glass Throughout
- 11.5' Ceiling Height
- Building Gym and Lobby in Progress and to be Completed Q3 2023
- Multiple Parking and Public Transportation Options Available

MATT DUHIG  
312.300.2374  
MDUHIG@R2.ME

MATT PISTORIO  
312.728.3619  
MPISTORIO@R2.ME





# Location Map

40 E HURON ST

Ann & Robert H. Lurie  
Children's Hospital of Chicago®

Northwestern  
Medicine®

Northwestern  
PRITZKER SCHOOL OF LAW

The Magnificent Mile®  
MICHIGAN AVENUE • CHICAGO

CHICAGO'S PREMIER  
COMMERCIAL DISTRICT





—  
40 E HURON ST  
Lobby

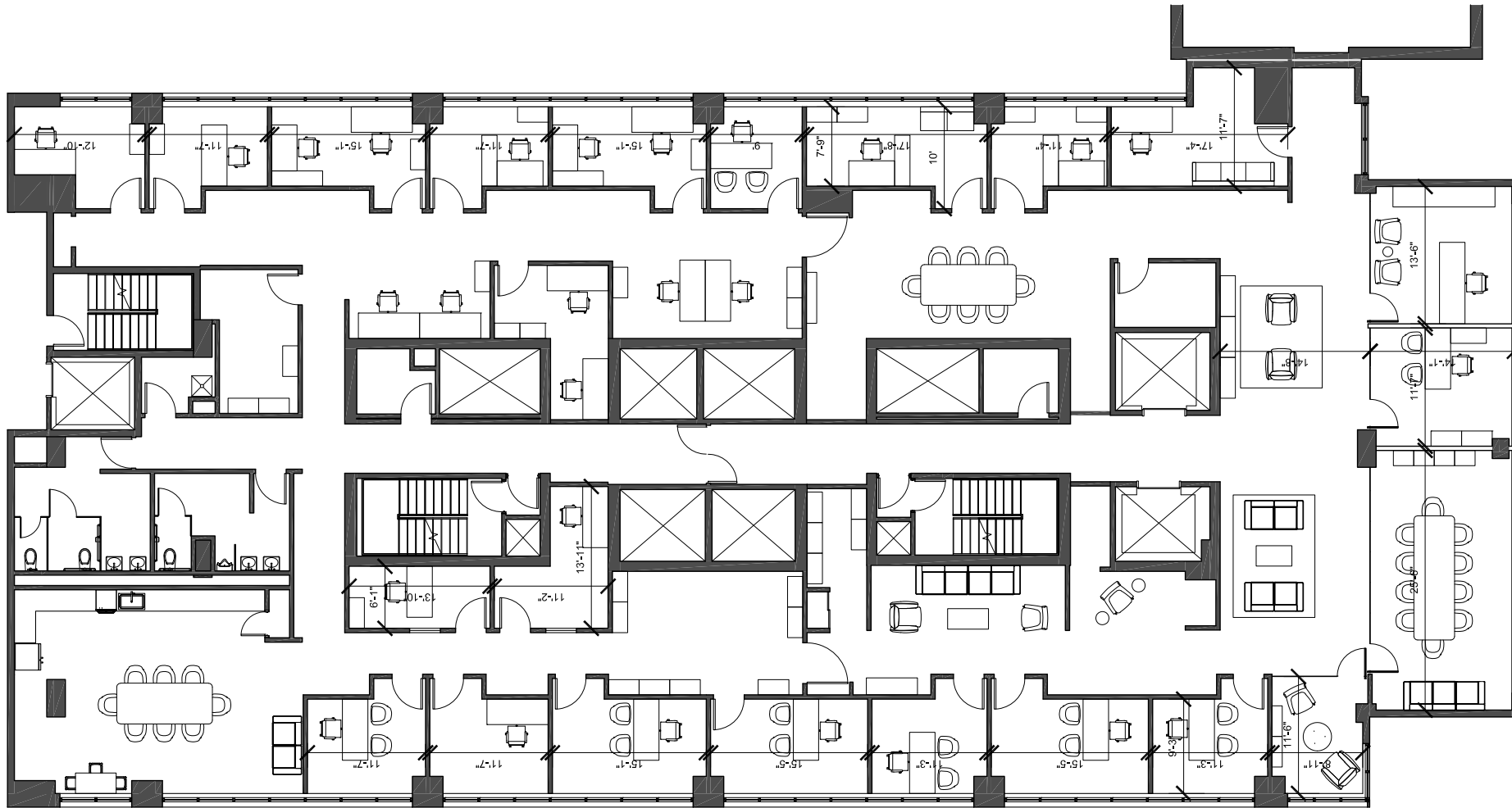




—  
40 E HURON ST  
Available Space



SUITE



300





—  
40 E HURON ST  
Available Space





—  
40 E HURON ST  
Available Space





—  
40 E HURON ST  
Available Space





—  
40 E HURON ST  
Available Space





—  
40 E HURON ST  
Available Space





01 900 NORTH FRANKLIN



02 19 NORTH SANGAMON



03 1114 WEST RANDOLPH



04 1221 NORTH LASALLE



05 770 NORTH HALSTED



06 224 NORTH DESPLAINES



07 WGN CAMPUS



08 CHAUNCEY SQUARE



09 110 WEST MONROE



10 811 WEST EVERGREEN



11 1165 NORTH CLARK



12 1001 NORTH BRANCH



13 934 NORTH BRANCH



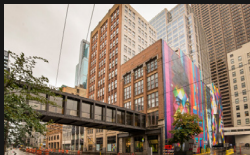
14 1200 NORTH BRANCH



15 GERMANIA PLACE



16 SKOKIE TOUHY DEVELOPMENT



17 THE 15 BUILDING



18 811 WEST LAKE



19 2059 WEST HASTINGS



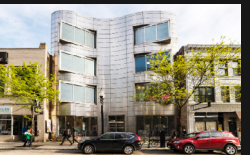
20 1315 NORTH BRANCH



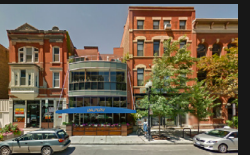
21 MILWAUKEE POST OFFICE



22 FLOUR EXCHANGE BUILDING



23 855 BELMONT



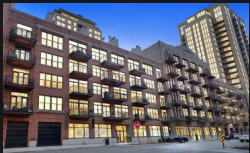
24 1262 NORTH WELLS



25 1400 KINGSBURY



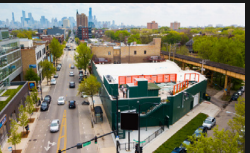
26 7855 GROSS POINT ROAD



27 375 WEST ERIE



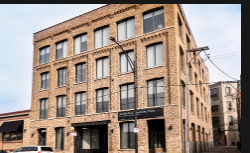
28 800 WEST WASHINGTON



29 1760 NORTH MILWAUKEE



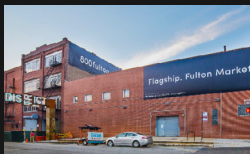
30 164 EAST GRAND



31 2001 NORTH CLYBOURN



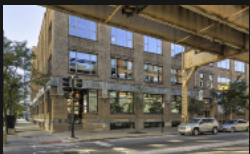
32 JP MORGAN CHASE - LOUISVILLE



33 800/810 WEST FULTON



34 445 WEST ERIE



35 645 WEST LAKE



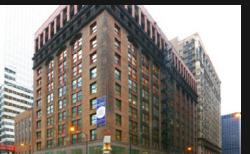
36 901 WEST JACKSON



37 542 SOUTH DEARBORN



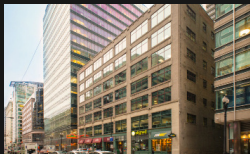
38 130 SOUTH JEFFERSON



39 79 WEST MONROE



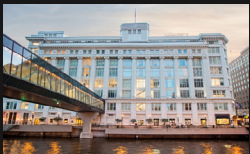
40 40-50 EAST HURON



41 118 SOUTH CLINTON



42 1000 WEST WASHINGTON



43 ASO CENTER



44 CROWN ARTS, MINNEAPOLIS



45 CROWN ARTS, MINNEAPOLIS



46 CROWN ARTS, MINNEAPOLIS



47 SALT DISTRICT



48 ALDEN HOTEL - MIAMI BEACH



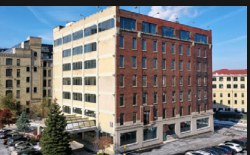
49 1325 QUINCY, MINNEAPOLIS (QUINCY HALL BUILDING)



50 1325 QUINCY, MINNEAPOLIS (CRANE BAY BUILDING)



51 THE TANNERY, MILWAUKEE (TRADE CENTER BUILDING)



52 THE TANNERY, MILWAUKEE (ATLAS BUILDING)



53 THE TANNERY, MILWAUKEE (TIMBERS BUILDING)



54 1422 KINGSBURY (FLAGSHIP REI)



55 LUMBER EXCHANGE BUILDING, MINNEAPOLIS



56 CROWN ARTS, MINNEAPOLIS

# R2 Companies

BY THE NUMBERS

5.2M  
Square Foot Portfolio

\$600M  
Assets Under Management

+40 Assets  
Currently Owned

3 Offices  
Chicago, Milwaukee, Minneapolis

50+  
R2 Operating Team

2007  
Year Founded



## In Relentless Pursuit of Opportunity.

---

R2 was created to source, acquire and uncover irreplaceable real estate in emerging and in-fill urban locations. R2 owns and operates over 6 million square feet across over 40 buildings and maintains offices in Chicago, Minneapolis & Milwaukee.

R2's vertically integrated platform is led by experienced Principals in Investment, Leasing, Asset Management, Property Management, Design & Construction. R2 has a multi-year track record of successfully repositioning Creative Office buildings across the Midwest.

For additional information, visit [R2.ME](https://r2.me)





R2 COMPANIES  
1200 N NORTH BRANCH STREET  
CHICAGO, ILLINOIS 60642  
[R2.ME](#)

MATT DUHIG  
312.300.2374  
[MDUHIG@R2.ME](mailto:MDUHIG@R2.ME)

MATT PISTORIO  
312.728.3619  
[MPISTORIO@R2.ME](mailto:MPISTORIO@R2.ME)