

AVAILABLE



2593 Yellow Springs Road | Malvern, PA 19355

Available Space

- Total: 12,500 SF
- Office: 5,000 ± SF (2 Stories– 2,500 per floor)
- Warehouse: 7,500 ± SF

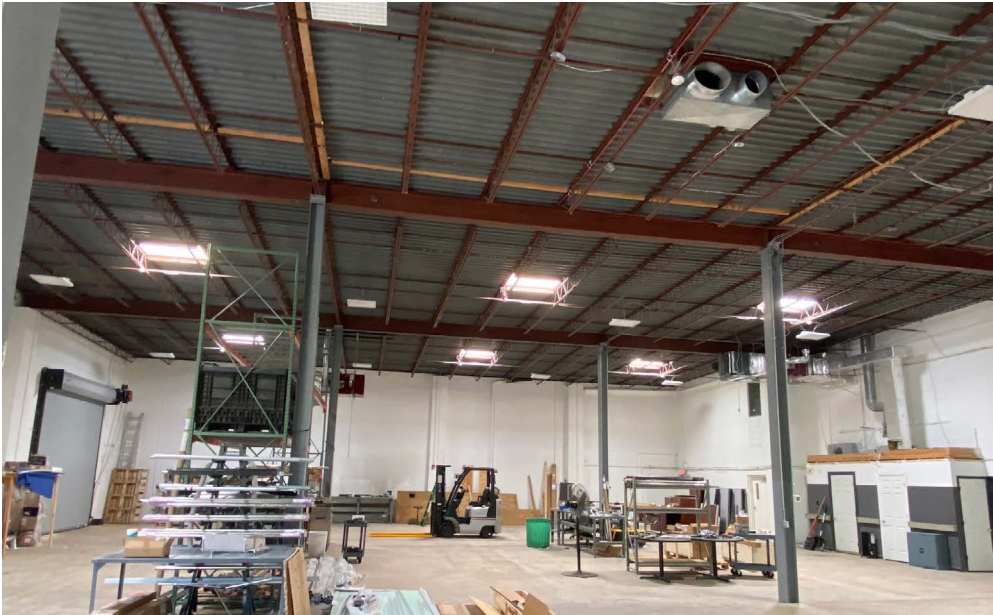
Property Highlights

- Two-story flex building at the Malvern (Route 29) on/off ramp of the PA Turnpike.
- Cinderblock construction with a brick façade and a perimeter fence
- Numerous amenities close-by including Wawa, Wegmans, PJ Whelihan's Pub, and Valley Creek Park
- Zoning: C2– Commercial Tredyffrin Township
- Sublease through January 31, 2025
- Two drive-in doors



2593 Yellow Springs Road

Malvern, PA 19355



2593 Yellow Springs Road

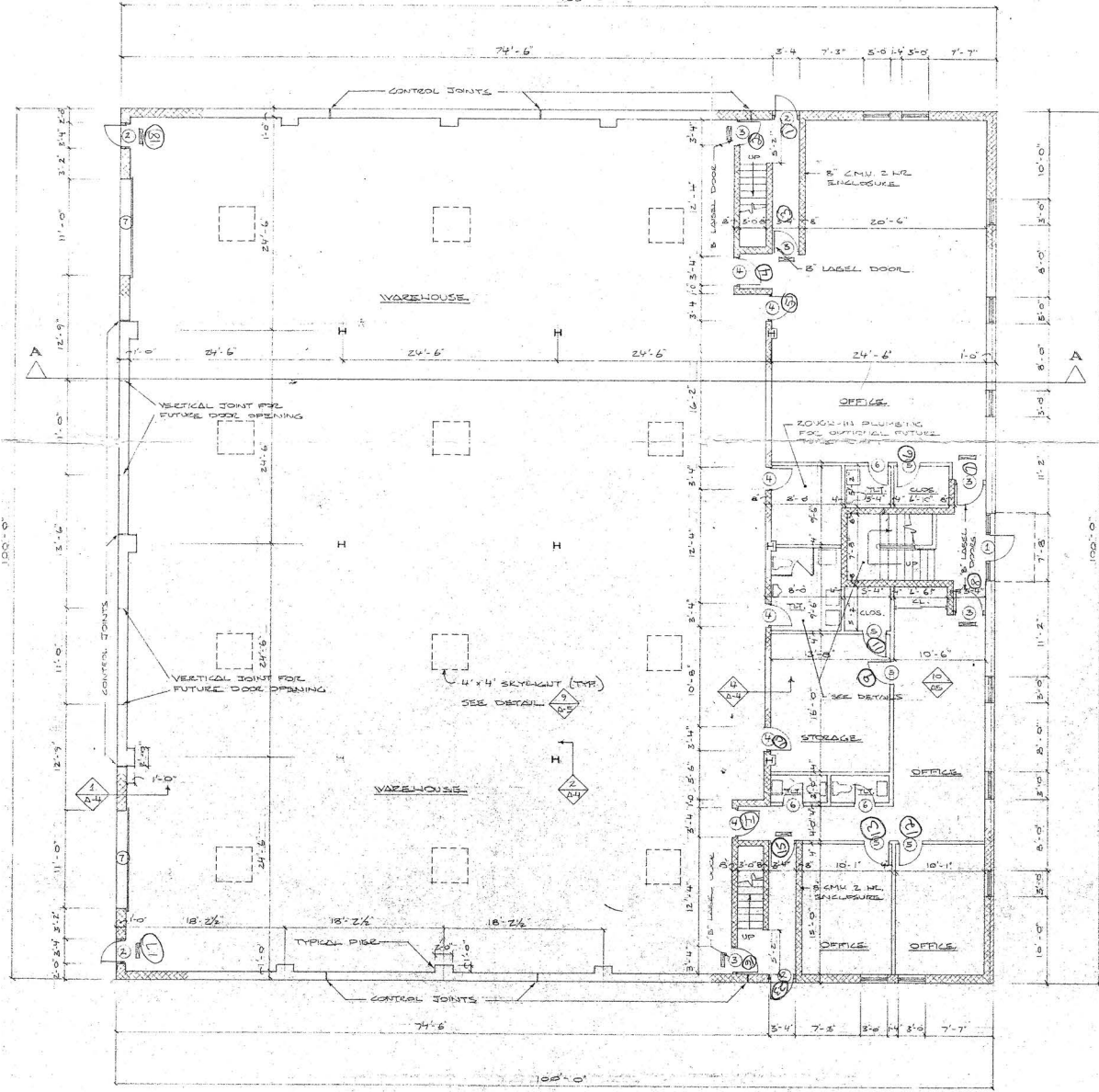
Malvern, PA 19355



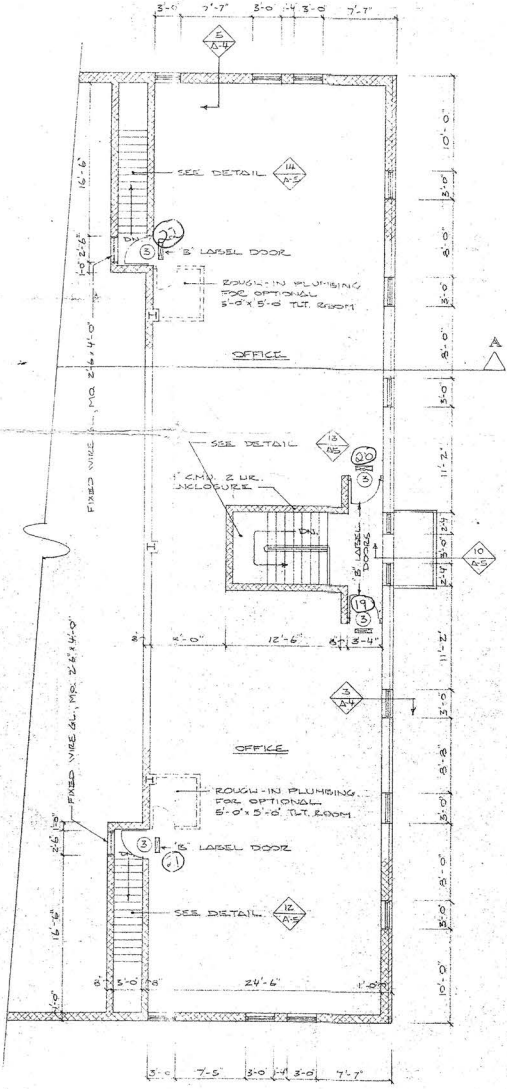
2593 Yellow Springs Road
 Malvern, PA 19355

First Floor

Second Floor



FIRST FLOOR PLAN



SECOND FLOOR PLAN



Adam Knox
 aknox@geisrealty.com

www.geisrealty.com
 (610) 989-0300

No warranty or representation, express or implied, is made as to the accuracy of the information contained herein, and the same is submitted subject to errors, omissions, change of price, rental or other conditions, prior sale, lease or financing, or withdrawal without notice, and of any special listing conditions imposed by our principals no warranties or representations are made as to the condition of the property or any hazards contained therein are any to be implied.