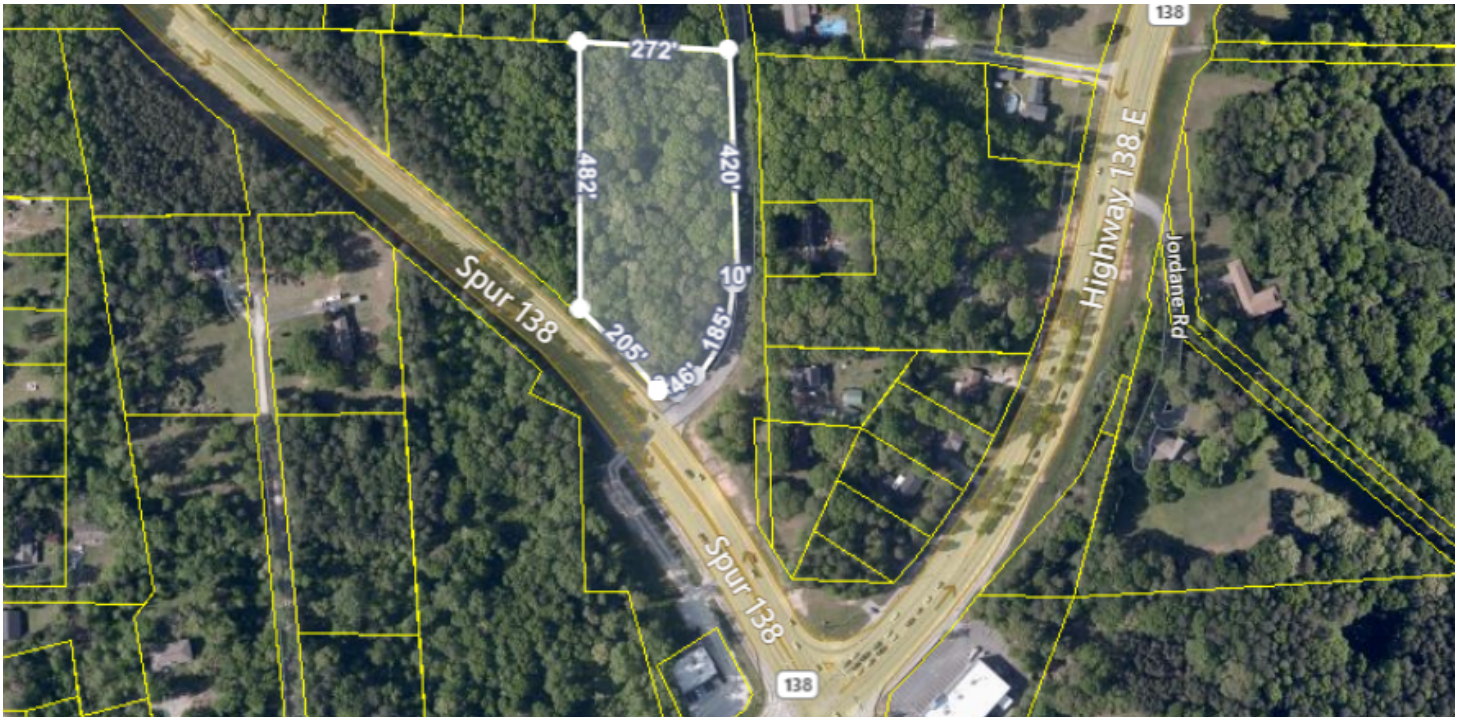


# SALE

## BAMBY LANE

1633 Stockbridge RD Jonesboro, GA 30236



### PROPERTY DESCRIPTION

Fantastic visibility and a great location. This property is located at the intersection of 138 & Bamby Ln in Jonesboro Clayton county Georgia. Minutes away from down town Jonesboro and GA route 54 and U.S HWY 19/41. A prime commercial property with a lot of potential for mixed-use development. Here are some key points to highlight:

It is situated at the intersection of 138 & Bamby Ln in Jonesboro, Clayton County, Georgia, the property enjoys excellent visibility and accessibility. Being minutes away from downtown Jonesboro, GA Route 54, and U.S. HWY 19/41.

The property is zoned for commercial mixed-use, allowing for a variety of development options including office spaces, retail outlets, and apartments/multifamily residences. This flexibility can attract a diverse range of tenants and customers.

Given its zoning and location, the property is ideal for a vibrant mixed-use development that caters to both residential and commercial needs. Integrating office spaces, retail shops, and apartments can create a dynamic community hub.

It has access to all utilities, including sewer lines, is a significant advantage for development. This reduces the complexity and cost. of infrastructure setup, making the property more attractive to developers.

### OFFERING SUMMARY

Sale Price:	\$350,000
Lot Size:	3.45 Acres
Building Size:	0 SF
Zoning:	Commercial Mixed-Use
APN:	12018B A017

DEMOGRAPHICS	1 MILE	3 MILES	5 MILES
Total Households	1,700	17,362	54,191
Total Population	4,837	54,912	166,643
Average HH Income	\$65,056	\$57,991	\$54,534

Adam Shekarabi  
770 632 1774



COLDWELL BANKER  
**COMMERCIAL**  
BULLARD

# SALE

## BAMBY LANE

1633 Stockbridge RD Jonesboro, GA 30236

SALE PRICE **\$350,000**

### PROPERTY INFORMATION

Property Type	Retail
Property Subtype	Street Retail
Zoning	Commercial Mixed-Use
Lot Size	3.45 Acres
APN #	12018B A017

### LOCATION INFORMATION

Building Name	Bamby lane
Street Address	1633 Stockbridge RD
City, State, Zip	Jonesboro, GA 30236
County	Clayton
Market	Jonesboro
Sub-market	Clayton/Jonesboro
Cross-Streets	Highway 138

### PARKING & TRANSPORTATION

### UTILITIES & AMENITIES

### BUILDING INFORMATION

Building Size	0 SF
---------------	------



**Adam Shekarabi**  
770 632 1774

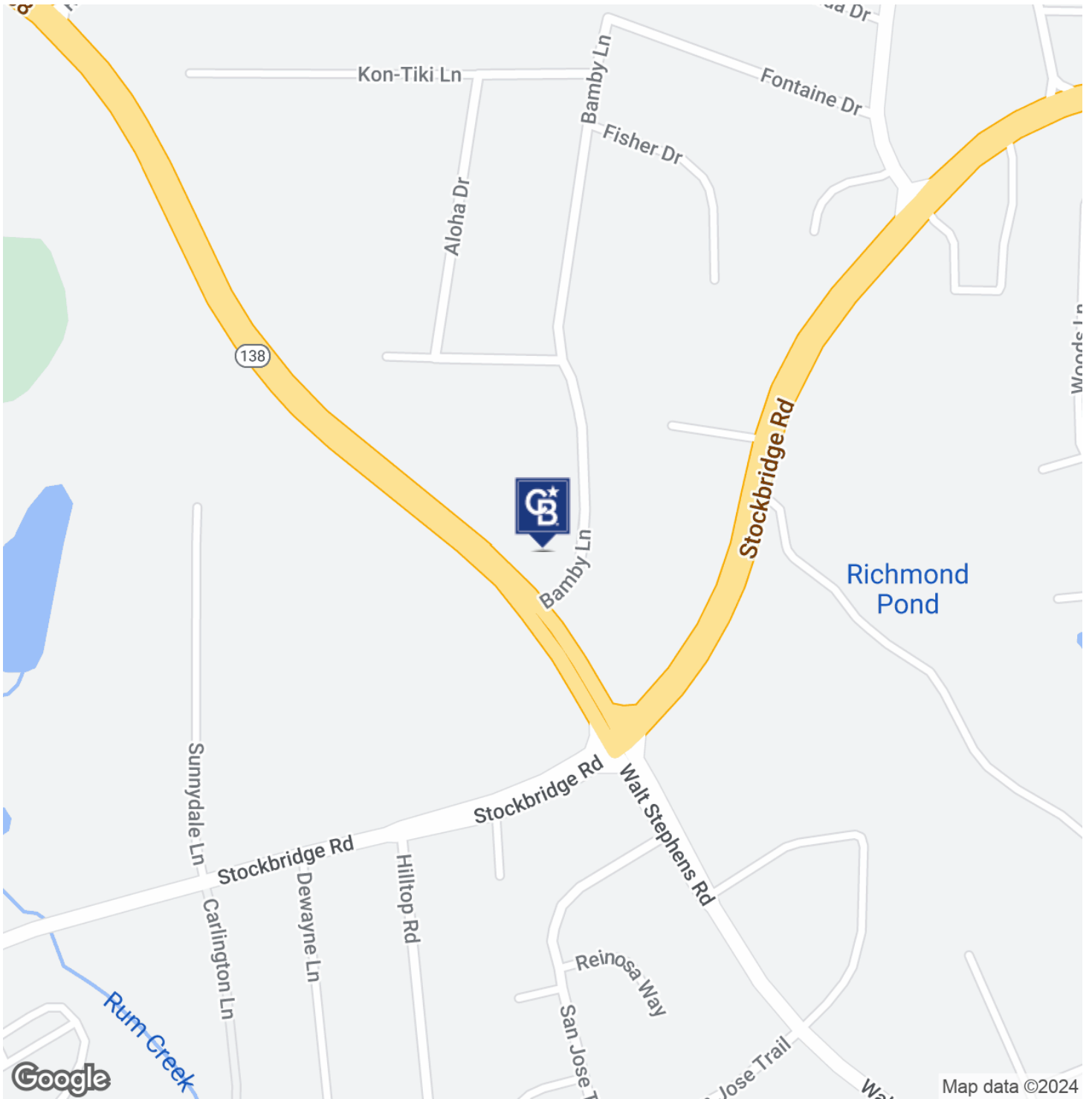


**COLDWELL BANKER**  
**COMMERCIAL**  
BULLARD

# SALE

## BAMBY LANE

1633 Stockbridge Rd Jonesboro, GA 30236



Adam Shekarabi  
770 632 1774

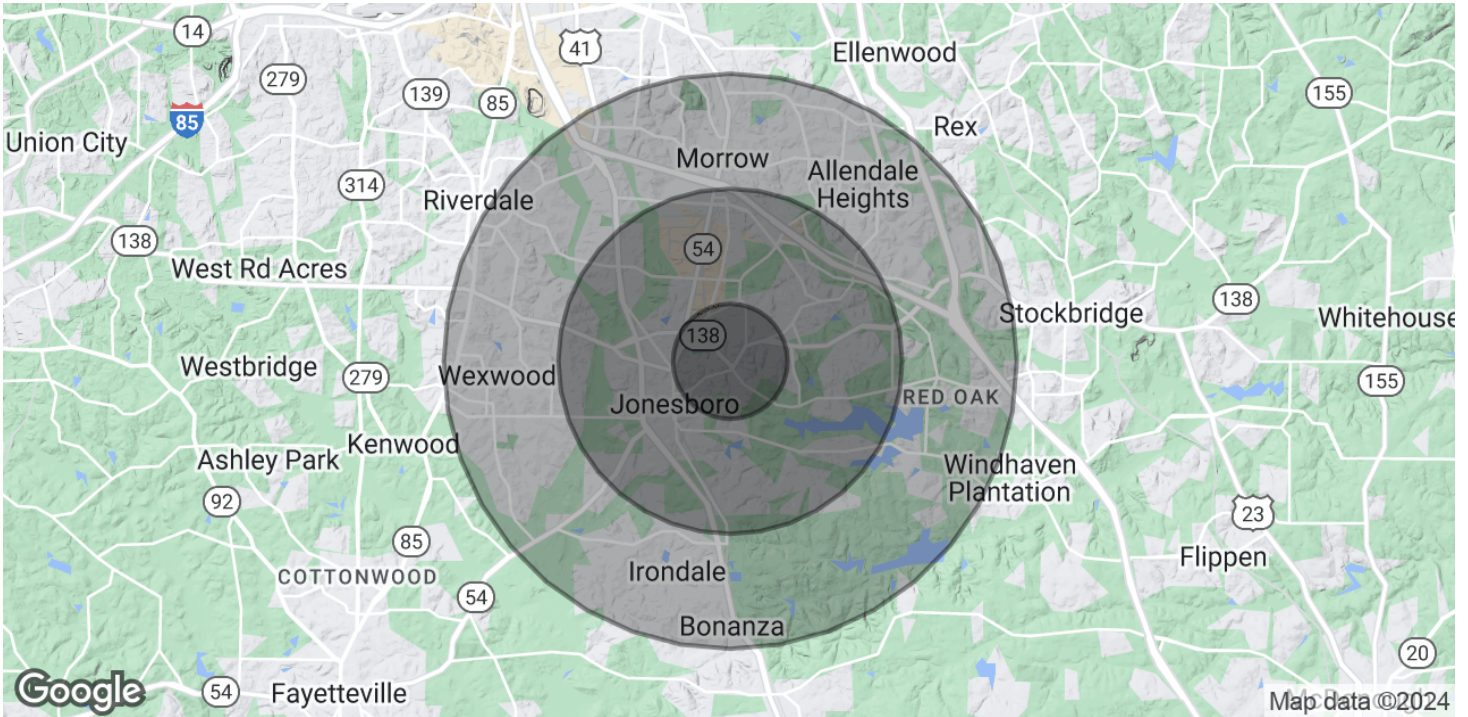


COLDWELL BANKER  
**COMMERCIAL**  
BULLARD

# SALE

## BAMBY LANE

1633 Stockbridge RD Jonesboro, GA 30236



POPULATION	1 MILE	3 MILES	5 MILES
Total Population	4,837	54,912	166,643
Average Age	35	32.8	31.6
Average Age (Male)	33.4	31.5	30
Average Age (Female)	37.5	34.1	33.1

HOUSEHOLDS & INCOME	1 MILE	3 MILES	5 MILES
Total Households	1,700	17,362	54,191
# of Persons per HH	2.8	3.2	3.1
Average HH Income	\$65,056	\$57,991	\$54,534
Average House Value	\$178,800	\$151,557	\$133,731

2020 American Community Survey (ACS)

Adam Shekarabi  
770 632 1774



COLDWELL BANKER  
**COMMERCIAL**  
BULLARD