

481 S OREM BLVD OFFICE

FOR LEASE



PROPERTY DETAILS

481-485 S Orem Blvd, Orem, UT 84058

- Great central Orem Location
- Access from Orem Blvd & State Street
- Each suite has 4 rooms and restroom
- Building Signage Available
- Executive Suites Available
- Shared Breakroom
- FULL SERVICE RATES
- Wifi included
- Available Suites
 - » Suite 201 - 980 SF- \$1,750
 - » Suite 202 B- \$500
 - » Suite 202 C- \$550
 - » Suite 202 D- \$450

SURROUNDING TENANTS



2025 DEMOS



EST. POPULATION

1 MILE » 22,324
3 MILE » 128,457
5 MILE » 231,897



EST. HOUSEHOLDS

1 MILE » 7,456
3 MILE » 40,071
5 MILE » 70,262



EST. AVERAGE HH INCOME

1 MILE » \$102,139
3 MILE » \$121,848
5 MILE » \$113,313

NEWMARK

MOUNTAIN WEST

NIC WOODS

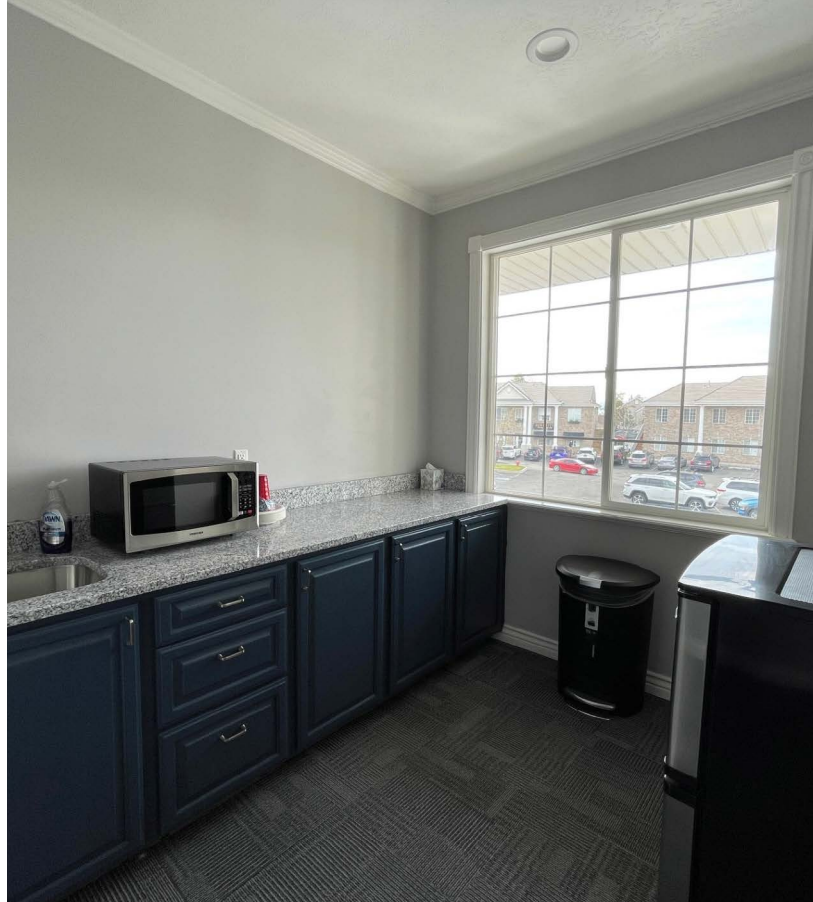
nwoods@newmarkmw.com
direct 801.719.4309
[View Profile](#)

LANCE ROSE

Interstate Realty Brokers
direct 801.769.6461

**FULL SERVICE
COMMERCIAL REAL ESTATE**

312 East South Temple
Salt Lake City, Utah 84111
Office 801.456.8800
www.newmarkmw.com



NEWMARK
MOUNTAIN WEST

NIC WOODS
nwoods@newmarkmw.com
direct 801.719.4309
[View Profile](#)

LANCE ROSE
Interstate Realty Brokers
direct 801.769.6461

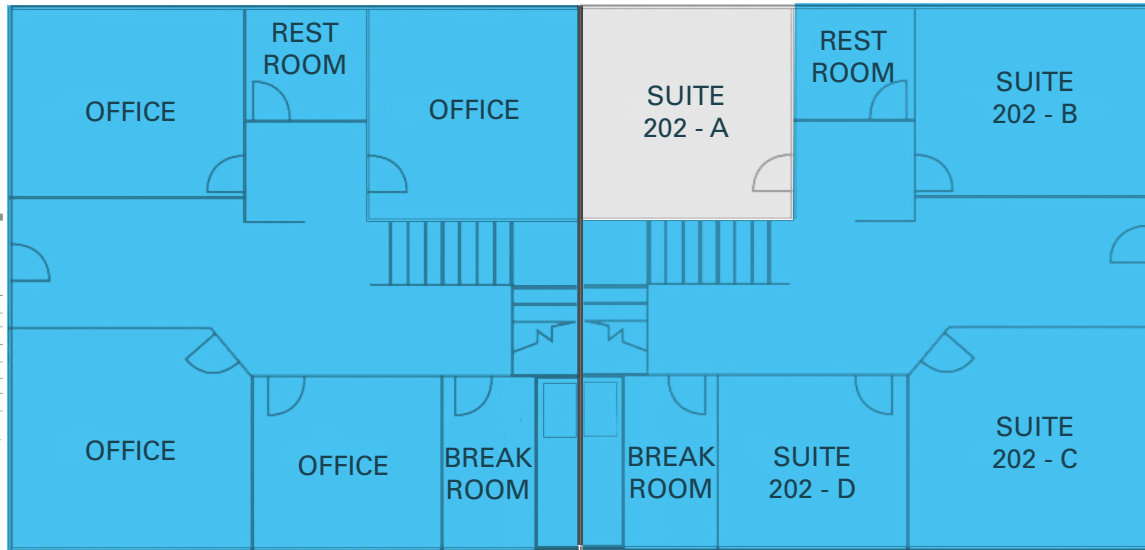
**FULL SERVICE
COMMERCIAL REAL ESTATE**
312 East South Temple
Salt Lake City, Utah 84111
Office 801.456.8800
www.newmarkmw.com

481 S OREM BLVD OFFICE

SITE PLAN

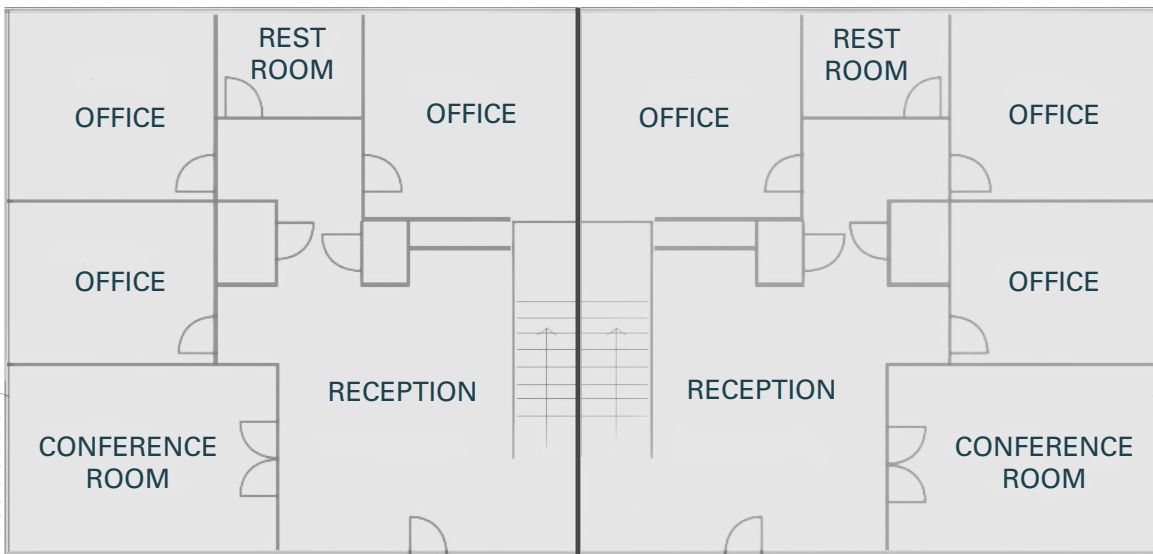
**UPPER LEVEL
Suite 201**

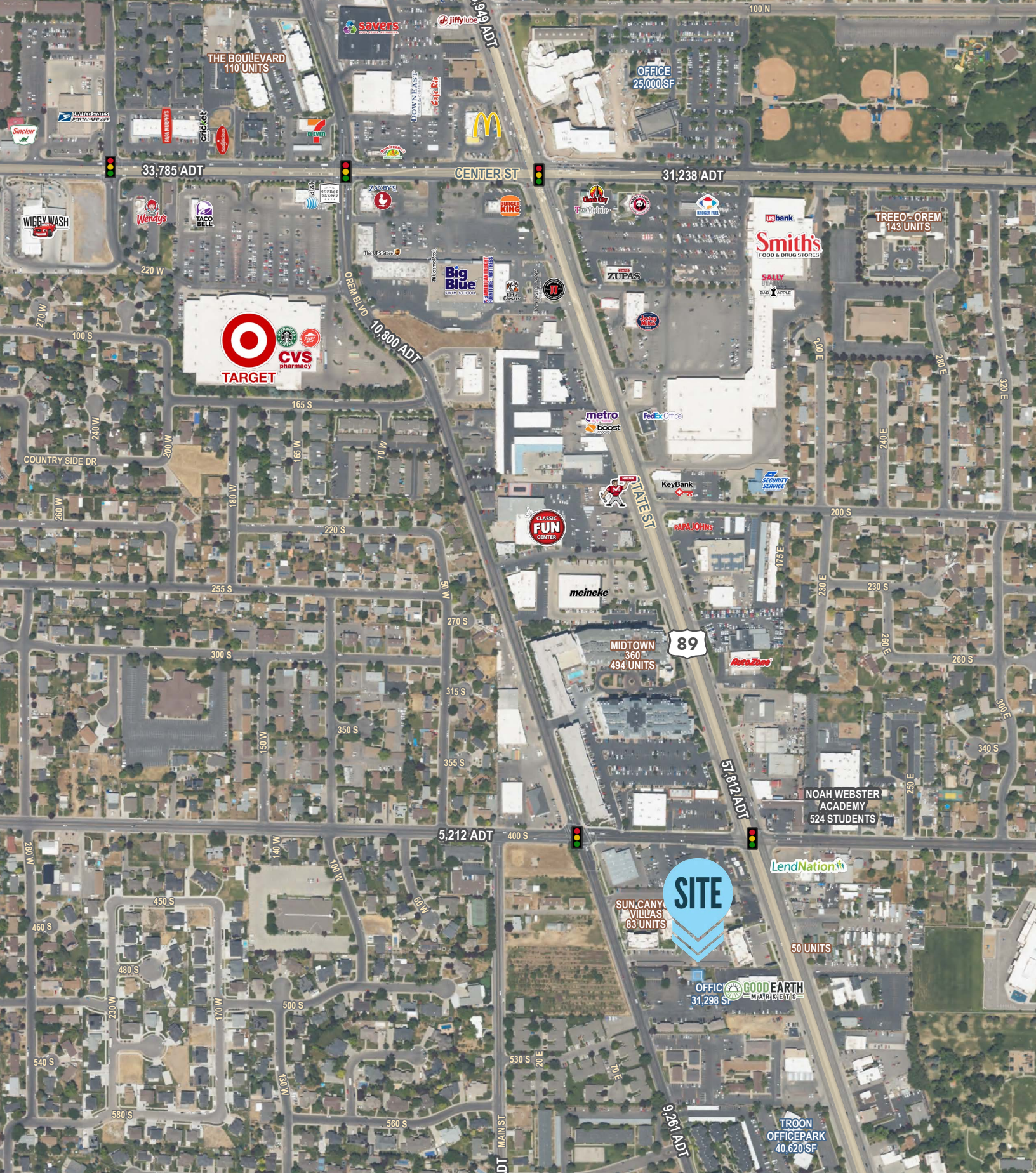
**UPPER LEVEL
Suite 202**



**MAIN LEVEL
Suite 101**

**MAIN LEVEL
Suite 102**





NIC WOODS
 nwoods@newmarkmw.com
 direct 801.719.4309
[View Profile](#)

LANCE ROSE
 Interstate Realty Brokers
 direct 801.769.6461

**FULL SERVICE
 COMMERCIAL REAL ESTATE**
 312 East South Temple
 Salt Lake City, Utah 84111
 Office 801.456.8800
www.newmarkmw.com