

FOR SUBLEASE

888 UNIVERSITY PARK BLVD
Clearfield, UT 84015



**CUSHMAN &
WAKEFIELD**

PLUG & PLAY OPPORTUNITY



Property Highlights

- Lease Rate: \$17.00/RSF, NNN
- 25,000 - 50,000 RSF Available
- Class A call center building with redundant data and emergency generator
- High-end, turn-key with furniture available for plug-&-play opportunity
- Best in class parking ratio of 7 per 1,000 SF
- On-site shared amenities include conference room and outdoor space
- Close proximity to Hill Air Force Base and less than 30 minutes to Downtown Salt Lake City and the Salt Lake City International Airport



Contact

MIKE RICHMOND

Executive Managing Director
+1 801 303 5434
mike.richmond@cushwake.com

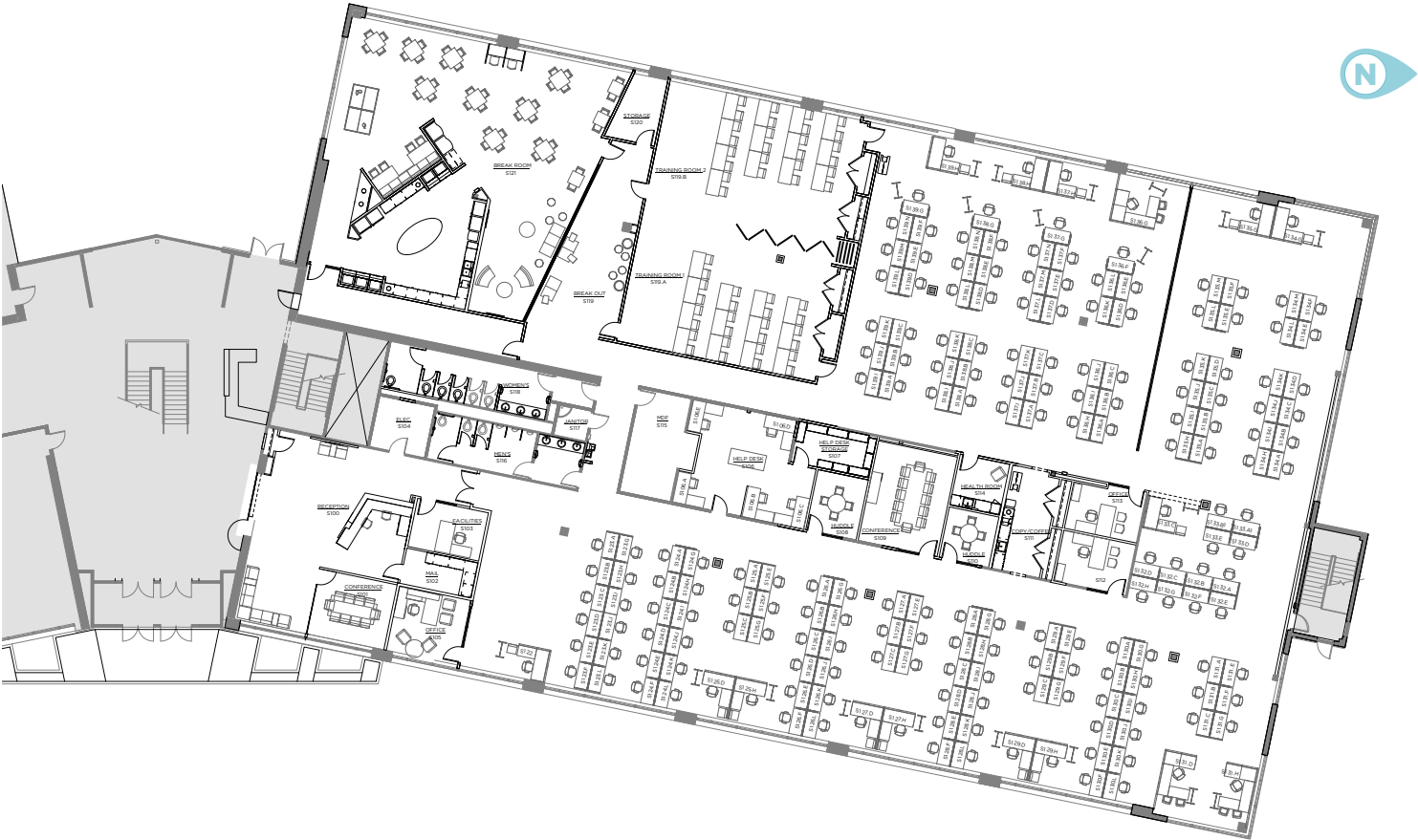
DANA BAIRD, CCIM

Executive Managing Director
+1 801 303 5526
dana.baird@cushwake.com

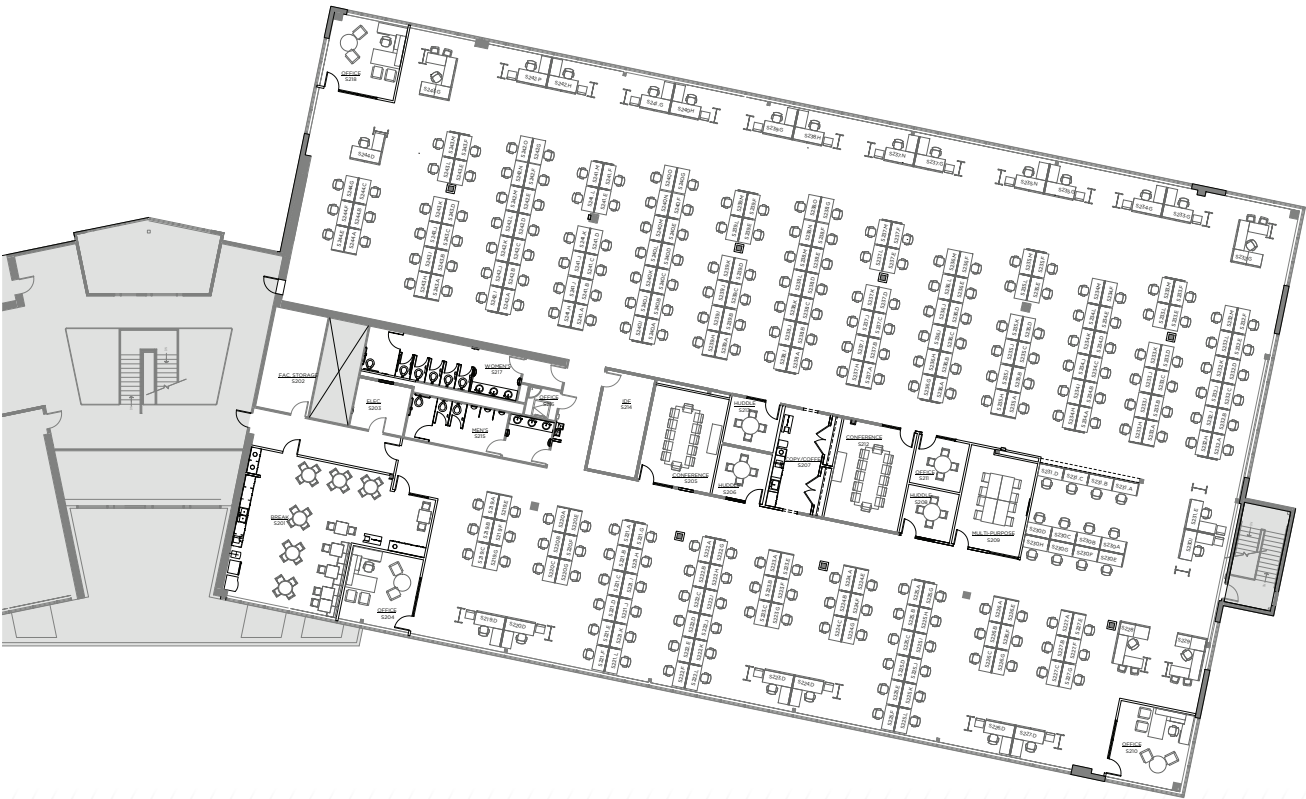
HANNAH KING

Associate
+1 801 303 5440
hannah.king1@cushwake.com

FLOOR ONE

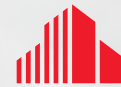


FLOOR TWO



FOR SUBLEASE

888 UNIVERSITY PARK BLVD • Clearfield, UT



CUSHMAN &
WAKEFIELD



Contact

MIKE RICHMOND
Executive Managing Director
+1 801 303 5434
mike.richmond@cushwake.com

DANA BAIRD, CCIM
Executive Managing Director
+1 801 303 5526
dana.baird@cushwake.com

HANNAH KING
Associate
+1 801 303 5440
hannah.king1@cushwake.com

170 South Main Street • Salt Lake City, UT 84101 • +1 801 322 2000 • cushmanwakefield.com

Cushman & Wakefield Copyright 2022. No warranty or representation, express or implied, is made to the accuracy or completeness of the information contained herein, and same is submitted subject to errors, omissions, change of price, rental or other conditions, withdrawal without notice, and to any special listing conditions imposed by the property owner(s). As applicable, we make no representation as to the condition of the property (or properties) in question. (path: G:\UT\SL1\Shared\Apps\Gigas\1 - Projects\Richmond, Mike\1 - Flyers\888UniversityParkBlvd)