

For Lease

Industrial Property

3,000 SF | \$14.00 SF/yr



207 Center Park Drive, Suite 2170

207 Center Park Drive, Suite 2170
Knoxville, Tennessee 37922

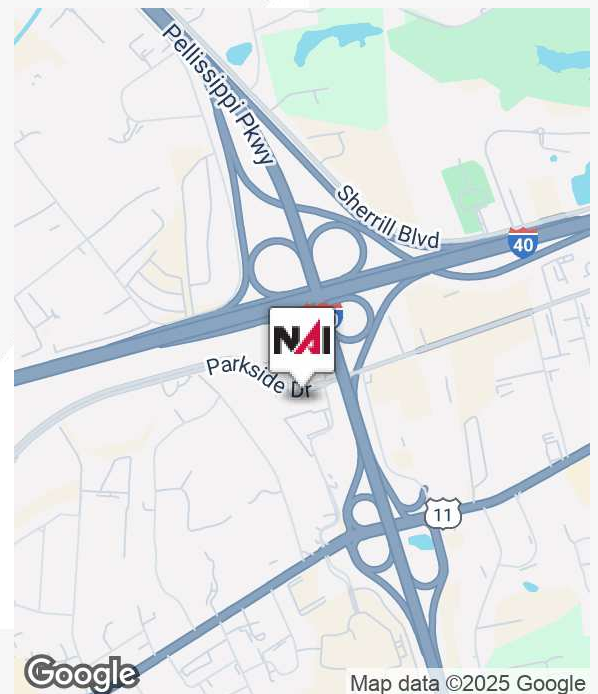
Property Highlights

- I-40 access 1/2 of a mile away
- Roll up drive-in bay door
- Affordable rents
- West Knoxville demographics

Property Description

Centrally located flex space with quick access to I-40/75 and Pellissippi Parkway. The property offers one grade level roll-up door into the shop space, functional office space and breakroom. Ample parking and affordable rents further highlight this opportunity.

I-40 interstate access 1/2 of a mile. Immediate access to West Knoxville demographics for vendor uses. Ideal for service related users in need of functional and convenient space and location.



For more information

Michael Moore

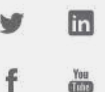
O: 865 531 6400
mmoore@koellamoore.com

Jessica Gupton

O: 865 640 6140
jgupton@koellamoore.com



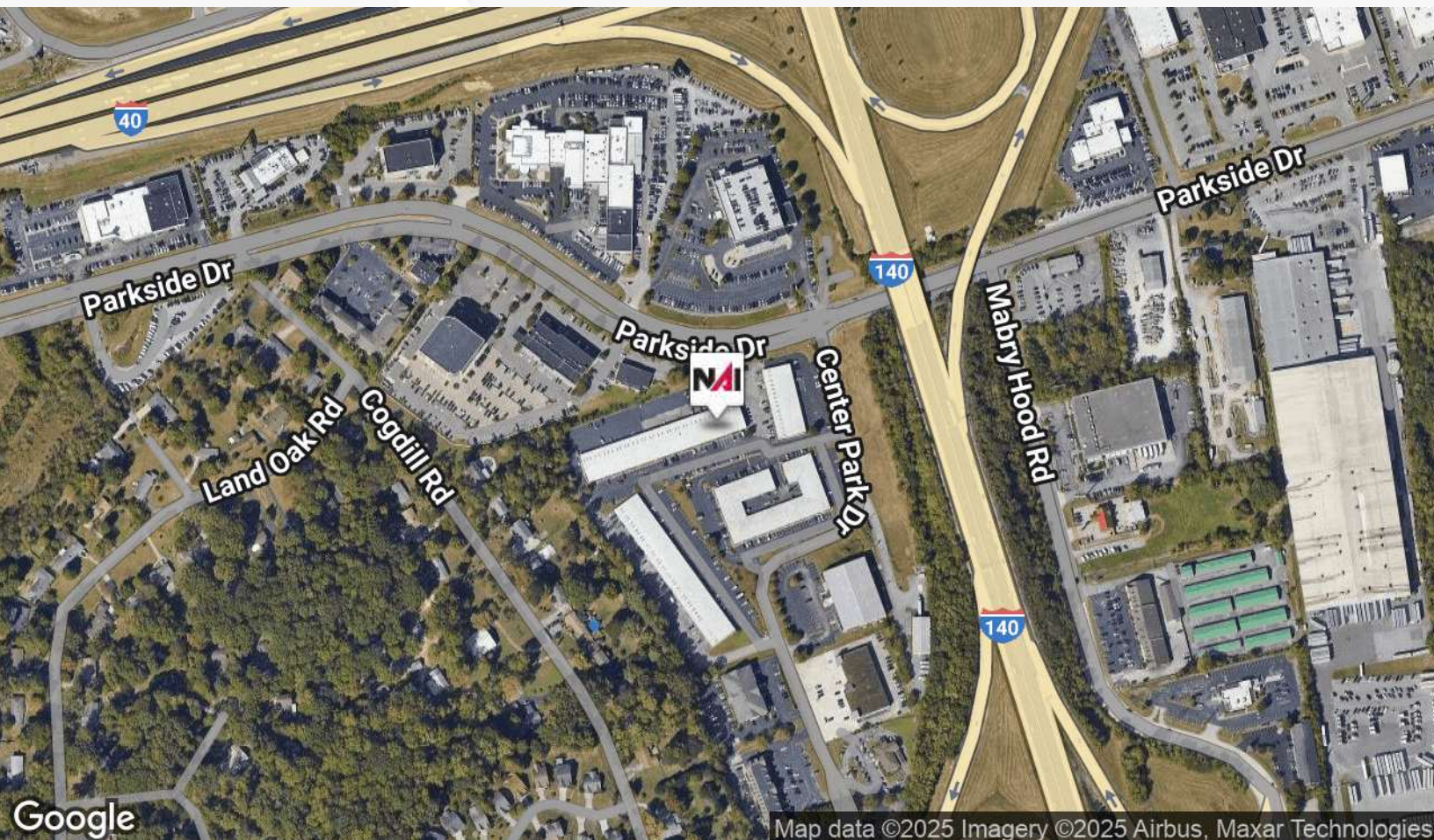
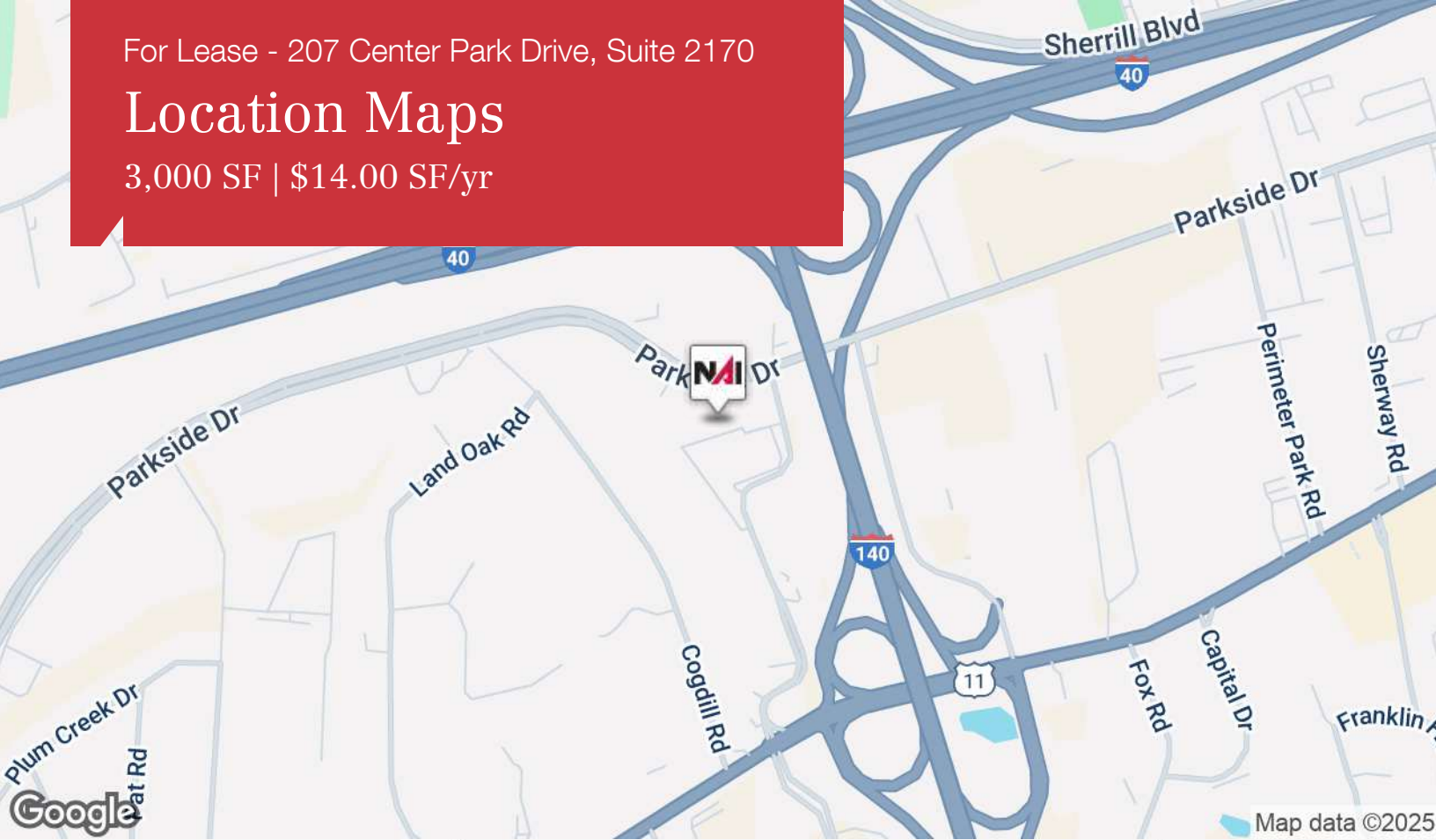
255 N Peters Road, Suite 101
Knoxville, TN 37923
865 531 6400 tel
koellamoore.com



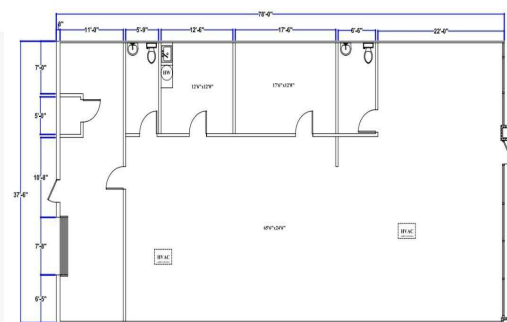
For Lease - 207 Center Park Drive, Suite 2170

Location Maps

3,000 SF | \$14.00 SF/yr



3,000 SF | \$14.00 SF/yr



207 Center Park Drive Suite 2170
2,000 Sq.Ft. • Office Space
445 Sq.Ft. • Storage Area
2,445 Sq.Ft. Total Area



For Lease - 207 Center Park Drive, Suite 2170

Additional Photos

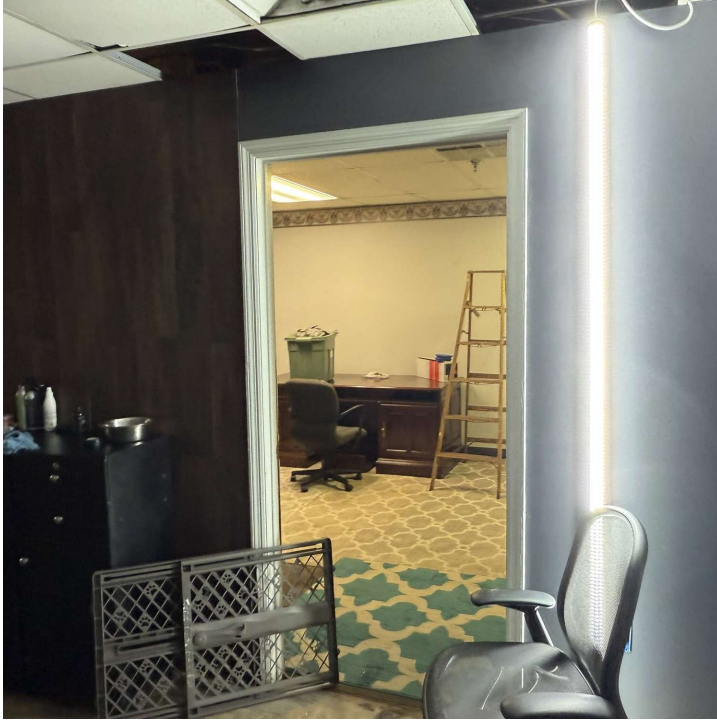
3,000 SF | \$14.00 SF/yr



For Lease - 207 Center Park Drive, Suite 2170

Additional Photos

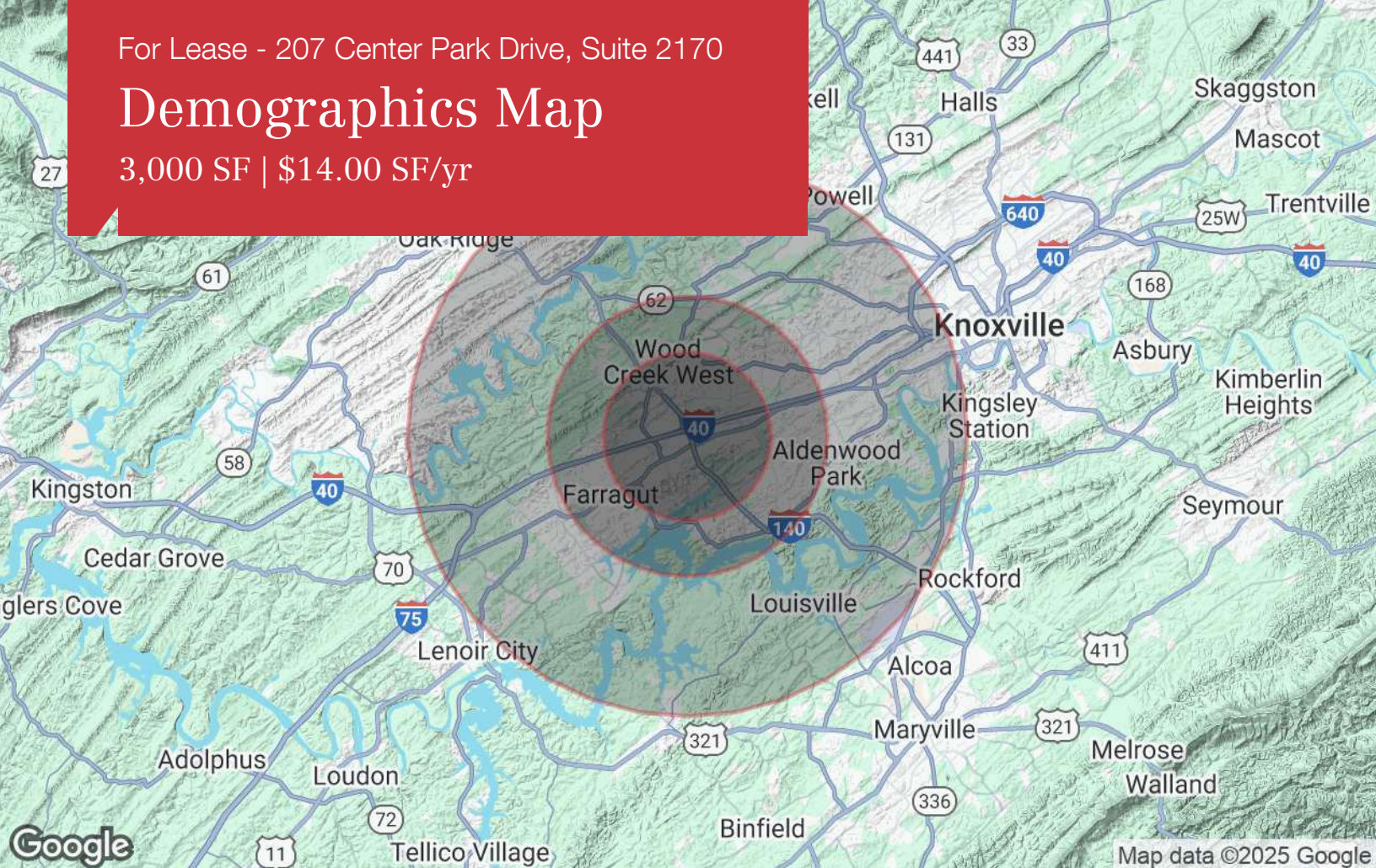
3,000 SF | \$14.00 SF/yr



For Lease - 207 Center Park Drive, Suite 2170

Demographics Map

3,000 SF | \$14.00 SF/yr



Population

	3 Miles	5 Miles	10 Miles
TOTAL POPULATION	48,466	133,687	275,701
MEDIAN AGE	41	41	41
MEDIAN AGE (MALE)	40	40	40
MEDIAN AGE (FEMALE)	42	42	43

Households & Income

	3 Miles	5 Miles	10 Miles
TOTAL HOUSEHOLDS	19,750	54,234	111,903
# OF PERSONS PER HH	2.5	2.5	2.5
AVERAGE HH INCOME	\$123,050	\$128,930	\$125,194
AVERAGE HOUSE VALUE	\$429,937	\$460,794	\$453,652

* Demographic data derived from 2020 ACS - US Census