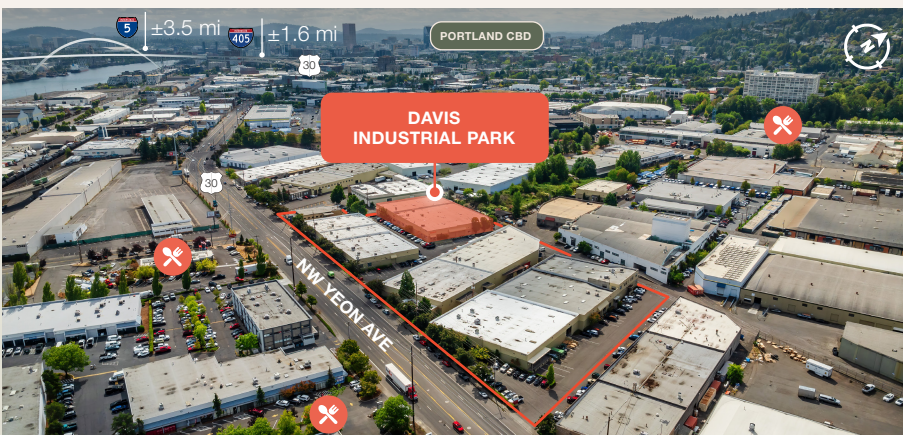


INDUSTRIAL/WAREHOUSE
FOR LEASE

Davis Industrial Park

3201-3221 NW Yeon Ave, Portland, OR 97210
Building B



Key Features



36,000 sq. ft. shell
divisible



3,711 sq. ft. office



7 dock doors
3 grade doors

16' clear height

Standalone opportunity

LED lighting

Convenient access to I-405
and I-5

Desirable Guilds Lake
location

Available April 2025

Lease Rate (NNN):

\$0.80/sq. ft. shell
\$1.10/sq. ft. office

Jake Bigby

jakeb@pactrust.com

Caitlin Knecht

caitlink@pactrust.com

503.624.6300

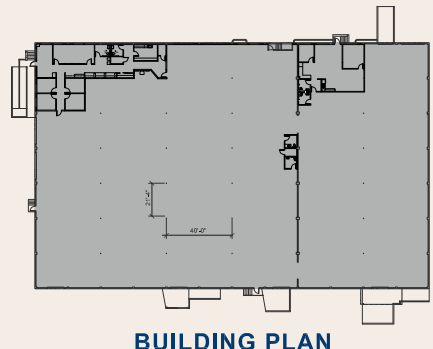
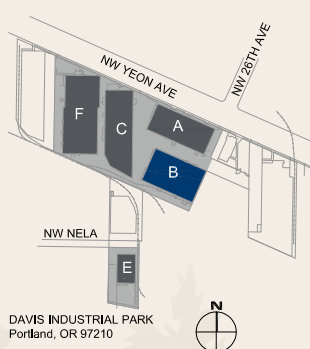
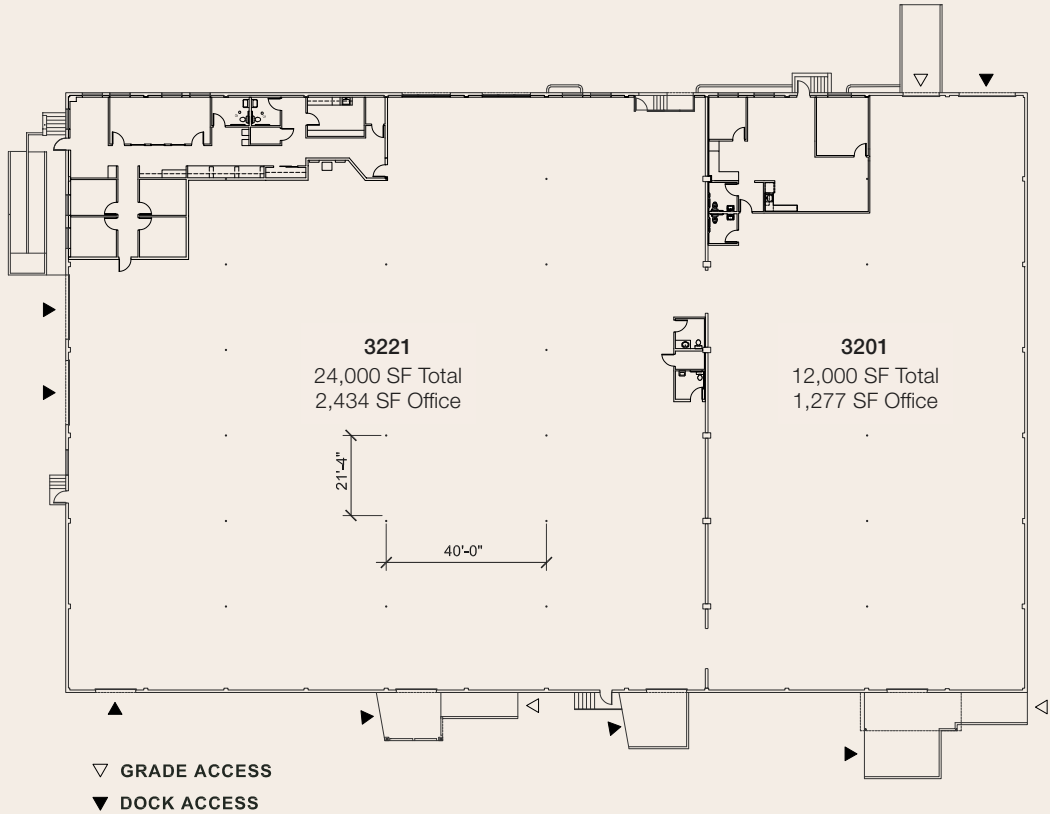
Owned & Managed by

PACTRUST

Space Plan

3201-3221 NW Yeon Ave, Portland, OR 97210

36,000 Sq. Ft.



Jake Bigby
jakeb@pactrust.com

Caitlin Knecht
caitlink@pactrust.com

503.624.6300
www.PacTrust.com