



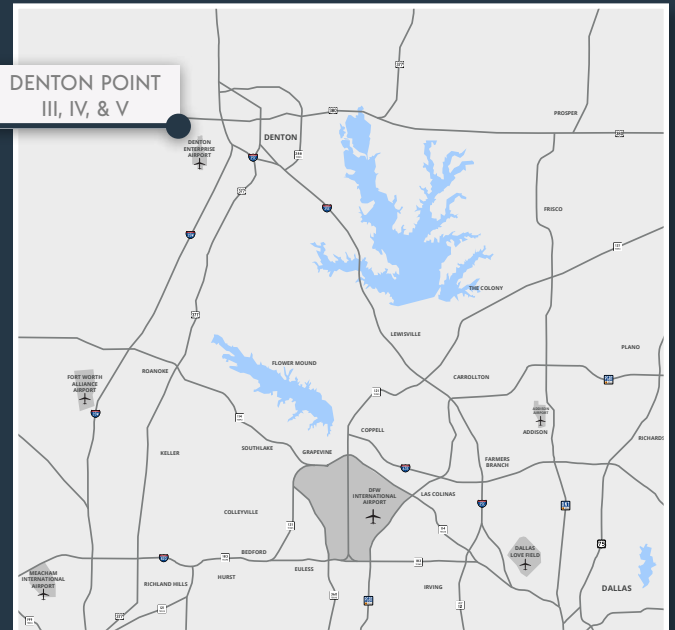
# DENTON POINT III·IV·V



## PROPERTY HIGHLIGHTS

- Three – building Class A development
  - Only two buildings remaining
- 24,960 SF – 320,641 SF available
- Clear height: 28' – 32'
- Truck court depths: 185' – 210' (shared)
- Spec office in place
- ESFR sprinkler system
- Easy access to I-35 and Highway 380
- Ample parking
- Professionally maintained

### DENTON POINT III, IV, & V



This information is deemed reliable, however Holt Lunsford Commercial makes no guarantees, warranties or representation as to the completeness or accuracy thereof.

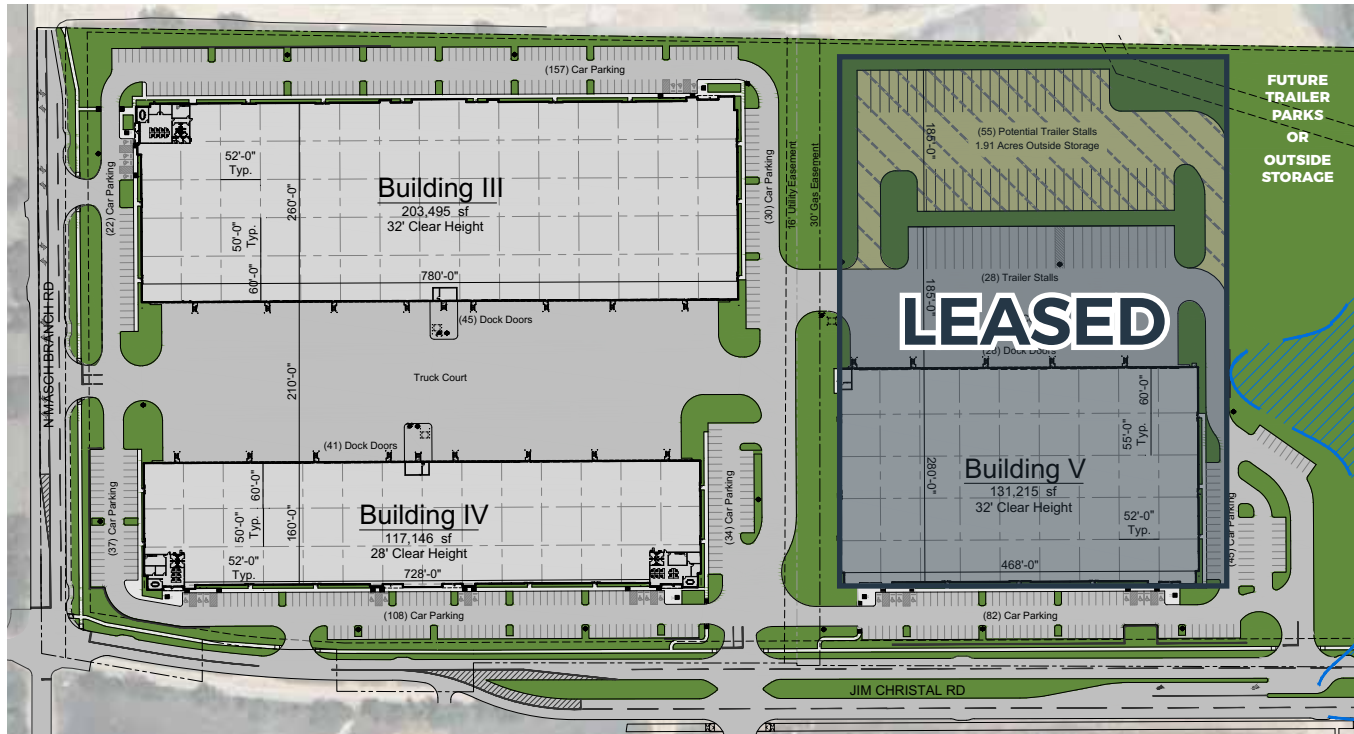
DEVELOPED BY



LEASED BY



ANDREW GILBERT | 972.280.8312 | [agilbert@holtlunsford.com](mailto:agilbert@holtlunsford.com)  
KEATON BRICE | 972.421.1956 | [kbrice@holtlunsford.com](mailto:kbrice@holtlunsford.com)



## BUILDING III

Address	710 Masch Branch Road
Available SF	100,000 - 203,495 SF
Spec Office	3,278 SF
Clear Height	32'
Dock Doors	45
Car Parking Spaces	209
Building Depth	260'
Truck Court	210' shared
Column Spacing	52' x 50'
Staging Bay	60'

## BUILDING IV

Address	670 Masch Branch Road
Available SF	24,960 - 117,146 SF
Spec Office	2,237 SF
Clear Height	28'
Dock Doors	40
Car Parking Spaces	180
Building Depth	160'
Truck Court	210' shared
Column Spacing	52' x 50'
Staging Bay	60'

## BUILDING V

Address	4610 Jim Christal Road
Available SF	131,215 SF
Clear Height	32'
Dock Doors	28
Car Parking Spaces	82
Building Depth	260'
Truck Court	185'
Column Spacing	52' x 55'
Staging Bay	60'
Trailer Parks	Up to 83

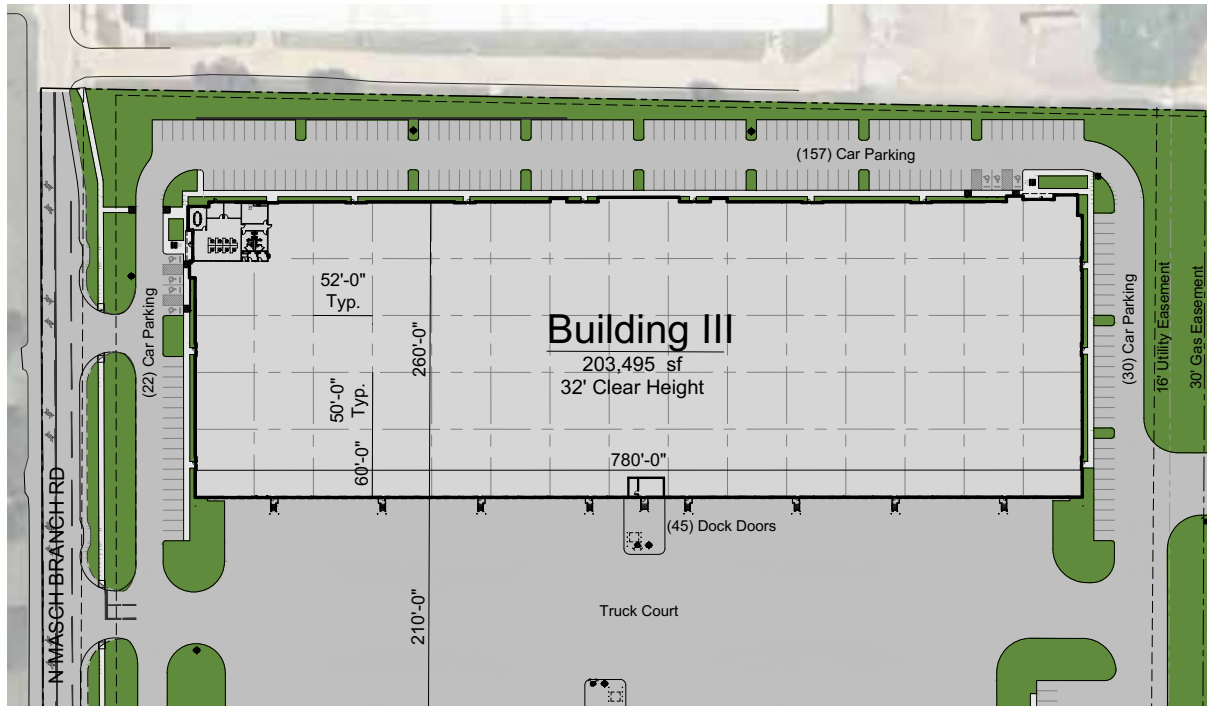
DEVELOPED BY



LEASED BY



ANDREW GILBERT | 972.280.8312 | [agilbert@holtlunsford.com](mailto:agilbert@holtlunsford.com)  
KEATON BRICE | 972.421.1956 | [kbrice@holtlunsford.com](mailto:kbrice@holtlunsford.com)

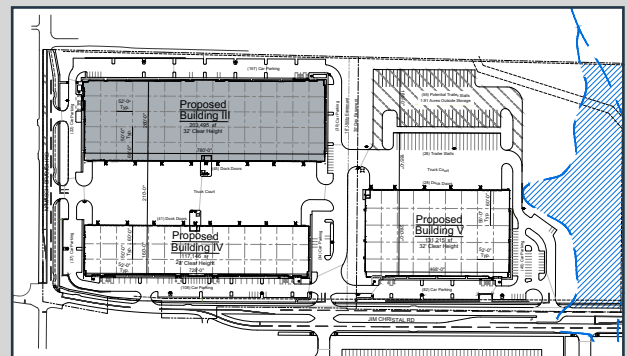


710 Masch Branch Road

## BUILDING HIGHLIGHTS

- 203,495 SF available
- Divisible to 100,000 SF
- Spec office: 3,278 SF
- Clear height: 32'
- Dock doors: 45
- Building depth: 260'
- Column spacing: 52' x 50'
- Speed bay: 60'
- Truck court: 210' shared
- Front park rear load
- Easy access to Highway 380, I35E, I35W

## PROPERTY NAVIGATION Master Site Plan



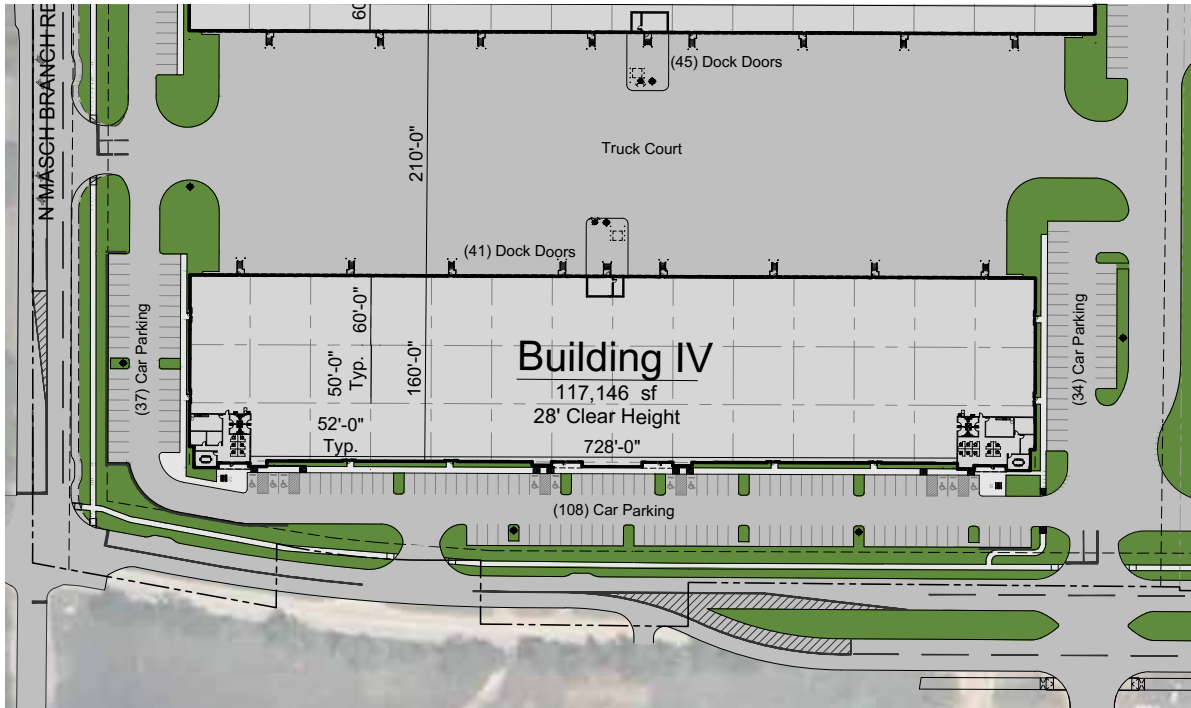
DEVELOPED BY



LEASED BY



ANDREW GILBERT | 972.280.8312 | [agilbert@holtlunsford.com](mailto:agilbert@holtlunsford.com)  
KEATON BRICE | 972.421.1956 | [kbrice@holtlunsford.com](mailto:kbrice@holtlunsford.com)

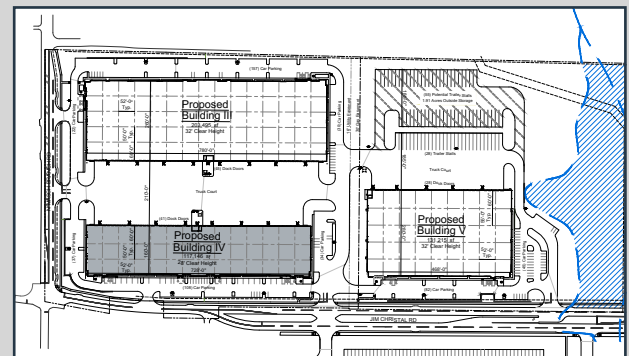


670 Masch Branch Road

## BUILDING HIGHLIGHTS

- 117,146 SF available
- Divisible to 24,960 SF
- Spec office: 2,237 SF
- Clear height: 28'
- Dock doors: 40
- Building depth: 160'
- Column spacing: 52' x 50'
- Speed bay: 60'
- Truck court: 210' shared
- Front park rear load
- Easy access to Highway 380, I35E, I35W

## PROPERTY NAVIGATION Master Site Plan



DEVELOPED BY



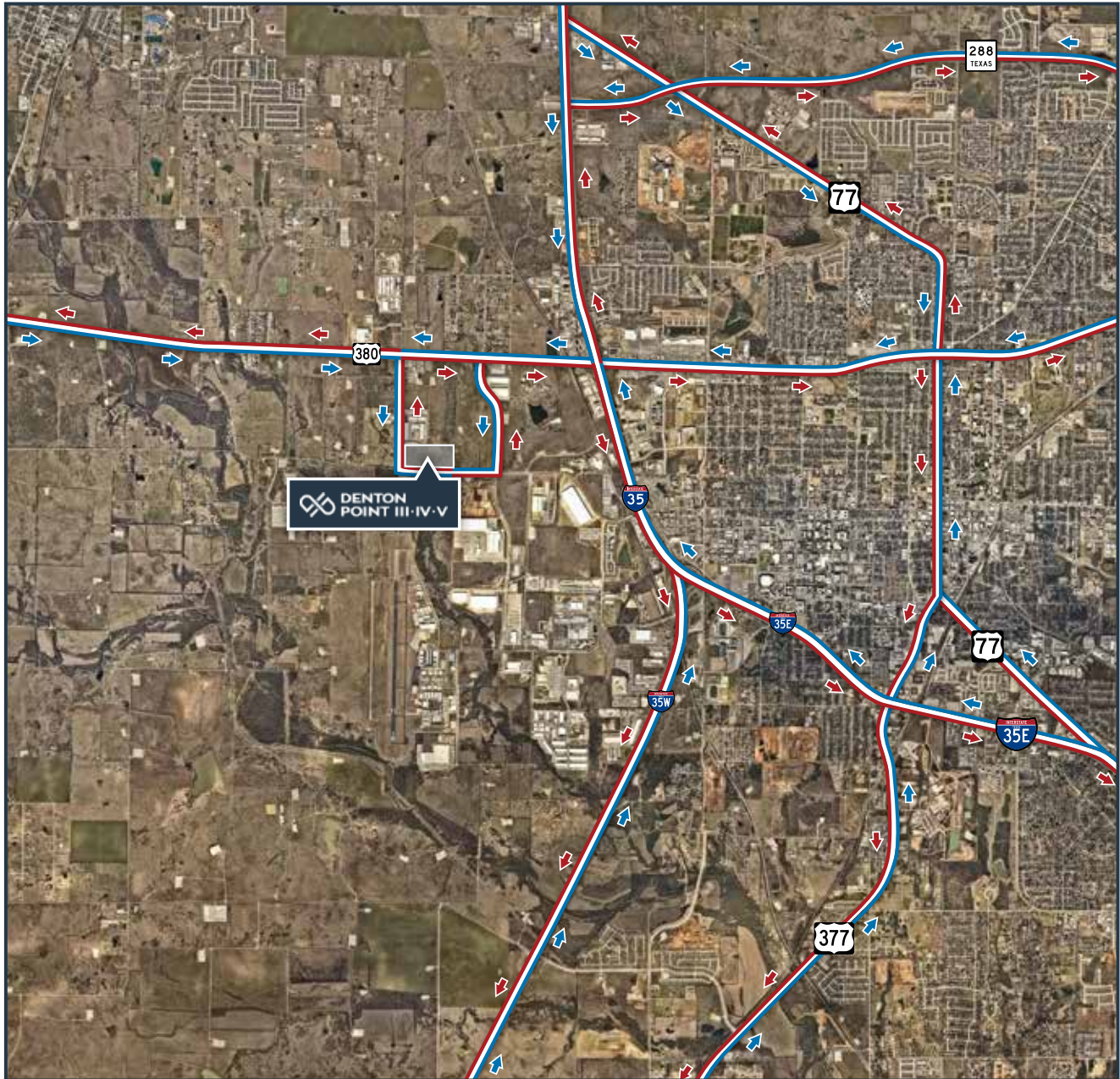
LEASED BY



ANDREW GILBERT | 972.280.8312 | [agilbert@holtlunsford.com](mailto:agilbert@holtlunsford.com)  
KEATON BRICE | 972.421.1956 | [kbrice@holtlunsford.com](mailto:kbrice@holtlunsford.com)



# DENTON POINT III·IV·V



DEVELOPED BY



LEASED BY



ANDREW GILBERT | 972.280.8312 | [agilbert@holtlunsford.com](mailto:agilbert@holtlunsford.com)  
KEATON BRICE | 972.421.1956 | [kbrice@holtlunsford.com](mailto:kbrice@holtlunsford.com)



## DENTON HIGHLIGHTS

- The current Denton population is 160,564 which is a 13% increase since the most recent census in 2020.
- There is an outstanding labor pool in Denton and surrounding areas including Sanger, Krum and Decatur.
- 69% of the employed workforce in Denton commutes outside the City for work. As businesses continue to relocate to Denton, it presents the opportunity for the labor in Denton and surrounding areas to live and work in Denton.
- University of North Texas and Texas Women's University total to an enrollment of nearly 60,000 students - Peterbilt, headquartered in Denton, has internship program opportunities with the engineering program at UNT.
- Low mill rates within Denton County, triple freeport tax breaks and affordable blue-collar housing create opportunities for new businesses to be up and running more efficiently.
- Quick and easy access to I-35E and I-35W provide direct truck routes to both Dallas and Fort Worth CBD's and interstate access for longer hauls.

DEVELOPED BY



LEASED BY



**ANDREW GILBERT** | 972.280.8312 | [agilbert@holtlunsford.com](mailto:agilbert@holtlunsford.com)  
**KEATON BRICE** | 972.421.1956 | [kbrice@holtlunsford.com](mailto:kbrice@holtlunsford.com)



# **DENTON POINT III·IV·V**



DEVELOPED BY



LEASED BY



ANDREW GILBERT | 972.280.8312 | [agilbert@holtlunsford.com](mailto:agilbert@holtlunsford.com)  
KEATON BRICE | 972.421.1956 | [kbrice@holtlunsford.com](mailto:kbrice@holtlunsford.com)



# DENTON POINT III·IV·V



**ANDREW GILBERT**

972.280.8312 | [agilbert@holtlunsford.com](mailto:agilbert@holtlunsford.com)



**KEATON BRICE**

972.421.1956 | [kbrice@holtlunsford.com](mailto:kbrice@holtlunsford.com)

DEVELOPED BY



LEASED BY





