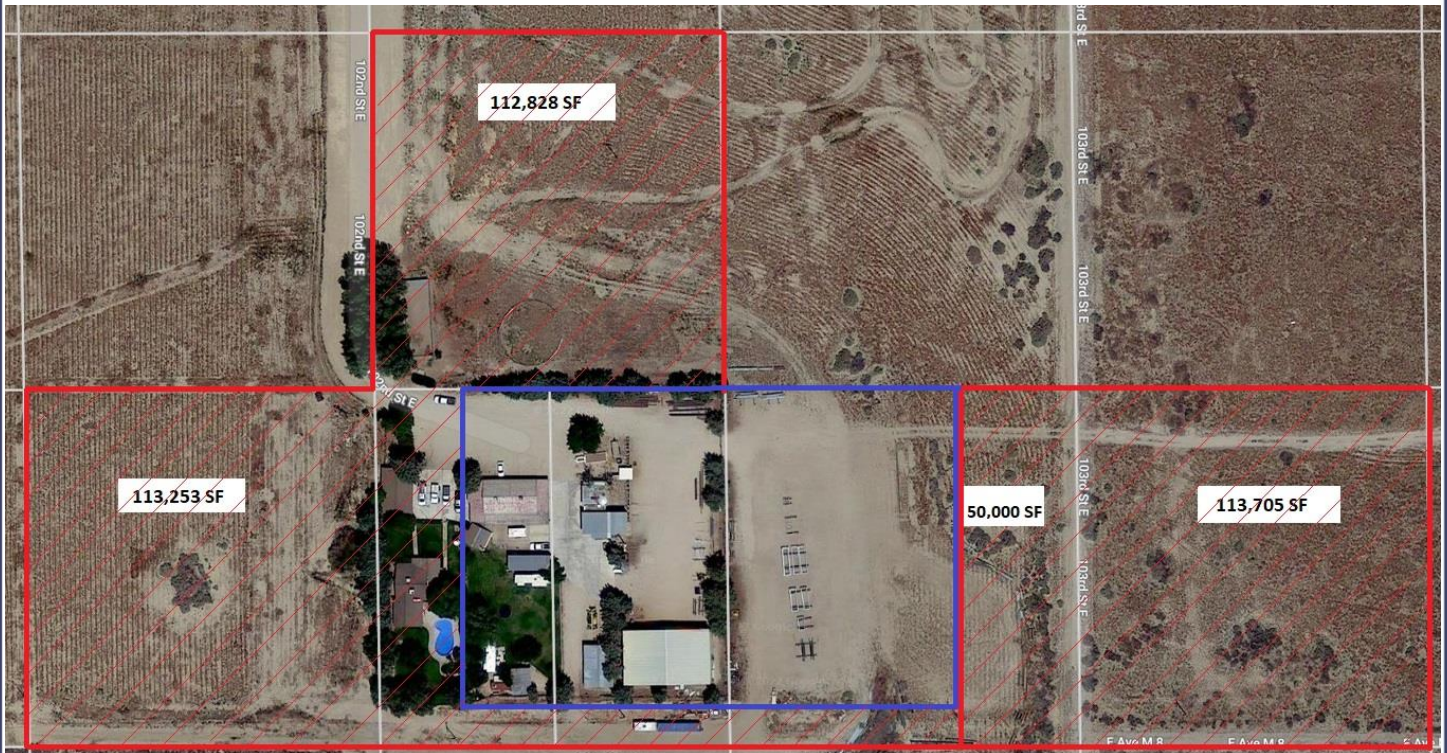


COMMERCIAL LEASE OPPORTUNITY

RIGHT SPACE | RIGHT PLACE

Gated & Graveled Trucking/Trailer/Construction Yard with Office and Garage



PRESENTED BY

Jerry Tomeo IV

Senior Commercial Associate

909-579-1398

909-996-8877

Jtomeo@mgrealestate.com

DRE Lic #01907707

MGR
Real Estate

41614 102nd St E, Palmdale, CA 93591

(9) Nine Acres of Heavy Industrial Yard with an Office and Garage available for Lease.

Features

- Available Yard Space – (1) One Acre up to (9) Nine Acres
- Yard Only available or Red Outlined site with Office and Garage
- New Gravel and New Secured Fencing
- Trucking, Construction, and many other Industrial uses allowed
- Well Water Available for Agricultural Uses
- Flexible Lease Terms
- 10 miles from State Route (SR) 138 & 14 miles from SR-14
- Same Day Appointments / Call Anytime!

Commercial | Residential | Property Management

UPLAND 909-981-4466

VICTORVILLE 760-955-7888

COLTON 909-503-1500

www.mgrealestate.com DRE ID# 01841921

All items on this page are deemed to be accurate, but should be viewed as reference only. MGR Real Estate, Inc. does not warranty/guaranty the validity of any information on this page.