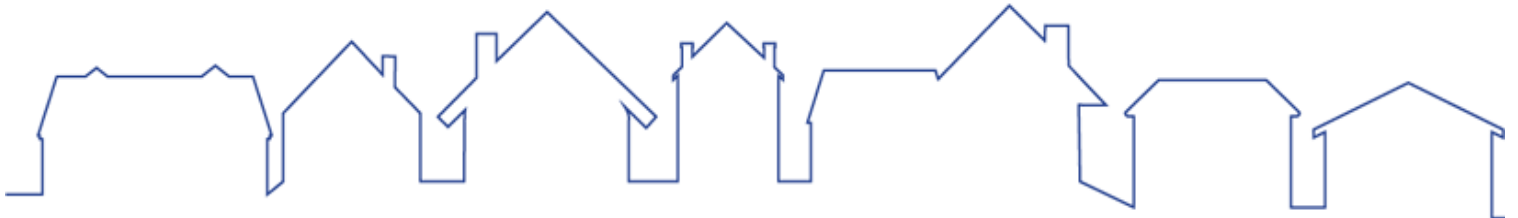


Details on the property located at
464-468 Essex St
Lawrence, MA 01840

LIST PRICE: \$22

MLS # 73410572
Commercial/Industrial - Office

Discover a rare opportunity to lease 5,500 sq. ft. of prime office space in the heart of downtown Lawrence at 464–468 Essex Street. This high-visibility, two-story commercial property sits in the vibrant Central Business District, surrounded by shops, banks, and restaurants, and just steps from public transportation. Ideal for banks, legal, medical, or professional offices, the space features 7 on-site parking spots—an uncommon convenience in this area. With a flexible layout and prominent street frontage, your business will benefit from excellent exposure and steady foot traffic. The property is fully accessible. A new HVAC system was installed in 2022, ensuring comfort and efficiency year-round. CONVENIENTLY LOCATED IN ONE OF LAWRENCE'S MOST WALKABLE CORRIDORS. THIS 5,500 SQ. FT. OFFICE SPACE MAY BE LEASED AS TWO SEPARATE UNITS OF APPROXIMATELY 2,750 SQ. FT. EACH.



The Liriano Team

Liriano Realty

240 Pleasant Street
#10
Methuen, MA 01844
617-372-1717
jliriano@thelirianoteam.com

The information in this listing was gathered from third-party sources including the seller and public records. MLS Property Information Network, Inc., and its subscribers disclaim any and all representations or warranties as to the accuracy of this information. Content ©2025 MLS Property Information Network, Inc.



**MLS # 73410572 - New
Commercial/Industrial - Office**

**464-468 Essex St
Lawrence, MA 01840-1242
Essex County**

List Price: **\$22**

Directions: **Newbury St to Essex St**

Discover a rare opportunity to lease 5,500 sq. ft. of prime office space in the heart of downtown Lawrence at 464–468 Essex Street. This high-visibility, two-story commercial property sits in the vibrant Central Business District, surrounded by shops, banks, and restaurants, and just steps from public transportation. Ideal for banks, legal, medical, or professional offices, the space features 7 on-site parking spots—an uncommon convenience in this area. With a flexible layout and prominent street frontage, your business will benefit from excellent exposure and steady foot traffic. The property is fully accessible. A new HVAC system was installed in 2022, ensuring comfort and efficiency year-round. CONVENIENTLY LOCATED IN ONE OF LAWRENCE’S MOST WALKABLE CORRIDORS. THIS 5,500 SQ. FT. OFFICE SPACE MAY BE LEASED AS TWO SEPARATE UNITS OF APPROXIMATELY 2,750 SQ. FT. EACH.

Building & Property Information

	# Units	Square Ft:	Assessed Value(s)	Space Available For: For Lease
Residential:	0	0	Land: \$174,100	Lease Type: Gross
Office:	1	5,500	Bldg: \$620,500	Lease Price Includes: Building
Retail:	0	0	Total: \$794,600	Lease: Yes Exchange: No
Warehouse:	0	0	# Buildings: 1	Sublet: No
Manufacturing:	0	0	# Stories: 1	21E on File: Yes
Total:			# Units:	
Disclosures: This 5,500 sq. ft. office space may be leased as two separate units of approximately 2,750 sq. ft. each, offering flexibility for tenants seeking a smaller footprint while maintaining a prime downtown location				

Drive in Doors:	Expandable:	Gross Annual Inc:
Loading Docks:	Dividable:	Gross Annual Exp:
Ceiling Height:	Elevator:	Net Operating Inc:
# Restrooms:	Sprinklers:	Special Financing:
Hndcp Accessibl:	Railroad siding:	Assc: Assoc Fee:
Lot Size: 4,000 Sq. Ft.	Frontage:	Traffic Count:
Acres: 0.09	Depth:	Lien & Encumb:
Survey:	Subdivide:	Undrgrnd Tank:
Plat Plan:	Parking Spaces: 7	Easements:
Lender Owned: No	Short Sale w/Lndr.App.Reg: No	

Features

Construction: **Frame**
 Location: **Downtown, Urban, Public Transportation, Central Business District**
 Parking Features: **Improved Driveway, Paved Driveway, Leased, On Site**
 Roof Material: **Tar & Gravel**
 Utilities: **Public Water, Public Sewer**

Other Property Info

Disclosure Declaration: **No**
 Exclusions:
 Year Established: **1910**
 Year Established Source: **Public Record**

Tax Information

Pin #: **M:0145 B:0000 L:0037**
 Assessed: **\$794,600**
 Tax: **\$6,992.48** Tax Year: **2025**
 Book: **18272** Page: **304**
 Cert: **7165**
 Zoning Code: **COM**
 Zoning Desc: **Legal Conforming**
 Map: Block: Lot:

Seller-Offered Compensation

Seller-Offered Sub-Agency Compensation:
 Seller-Offered Buyer's Broker Compensation:
 Seller-Offered Facilitator Compensation:
 Seller-Offered Compensation Based On:

Office/Agent Information

Listing Office: **Liriano Realty**  (617) 685-1515

Listing Agent: **The Liriano Team** (617) 372-1717

Team Member(s): **Jefri Liriano**  (617) 372-1717

Sale Office:

Sale Agent:

Listing Agreement Type: **Exclusive right to Lease**

Entry Only: **No**

Showing: Sub-Agency:  **Schedule with ShowingTime or Call 888-627-2775**

Showing: Buyer's Broker:  **Schedule with ShowingTime or Call 888-627-2775**

Showing: Facilitator:

Special Showing Instructions:

Market Information

Listing Date: **7/29/2025**

Days on Market: Property has been on the market for a total of **0** day(s)

Expiration Date: **1/30/2026**

Original Price: **\$22**

Off Market Date:

Sale Date:

Listing Market Time: MLS# has been on for **0** day(s)

Office Market Time: Office has listed this property for **0** day(s)

Cash Paid for Upgrades:

Seller Concessions at Closing:

The information in this listing was gathered from third-party sources including the seller and public records. MLS Property Information Network, Inc., and its subscribers disclaim any and all representations or warranties as to the accuracy of this information. Content ©2025 MLS Property Information Network, Inc.

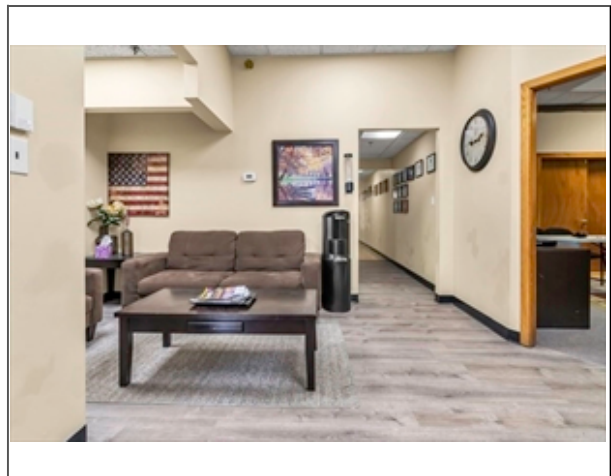
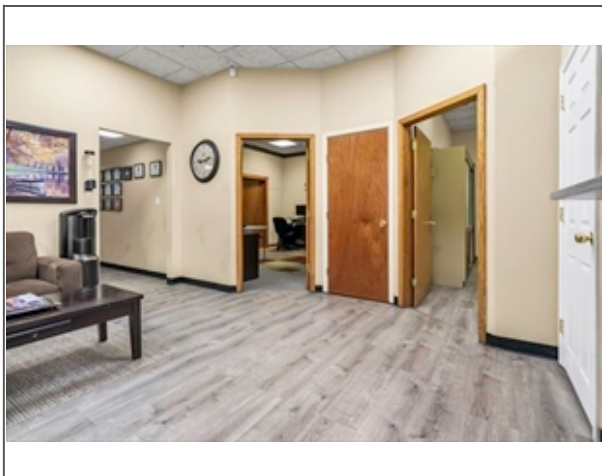
Market History for 464-468 Essex St, Lawrence, MA 01840-1242

MLS #	Date			DOM	DTO	Price
73410572	7/29/2025	Listed for	\$22	The Liriano Team	0	\$22
Market History for Liriano Realty (AN8804)				0		
Market History for this property				0		

The information in this listing was gathered from third-party sources including the seller and public records. MLS Property Information Network, Inc., and its subscribers disclaim any and all representations or warranties as to the accuracy of this information. Content ©2025 MLS Property Information Network, Inc.

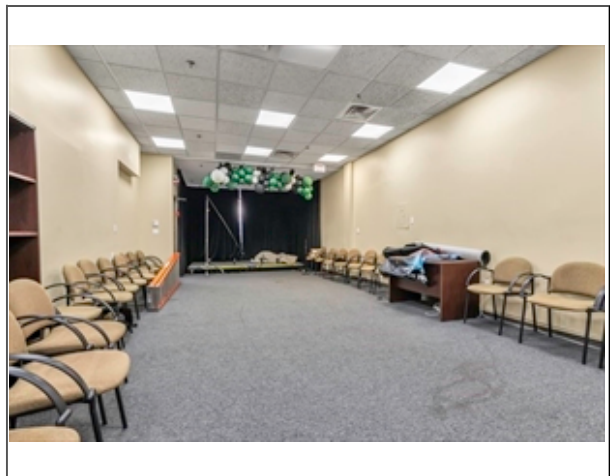
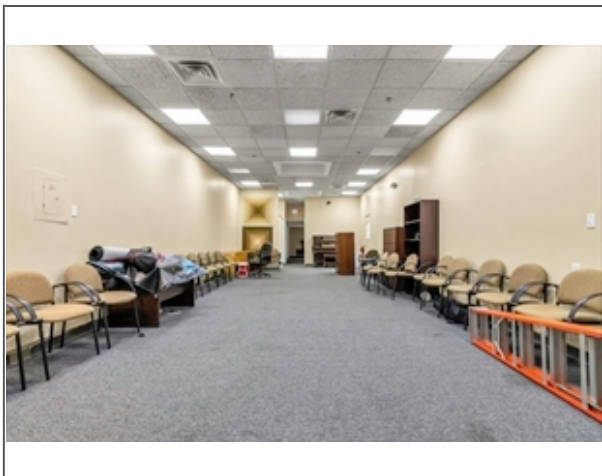
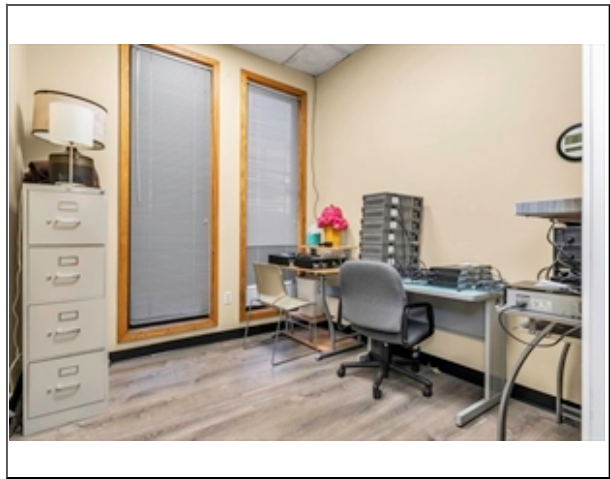
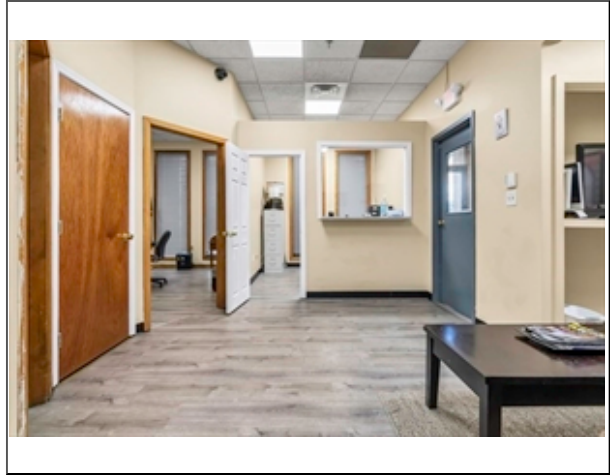
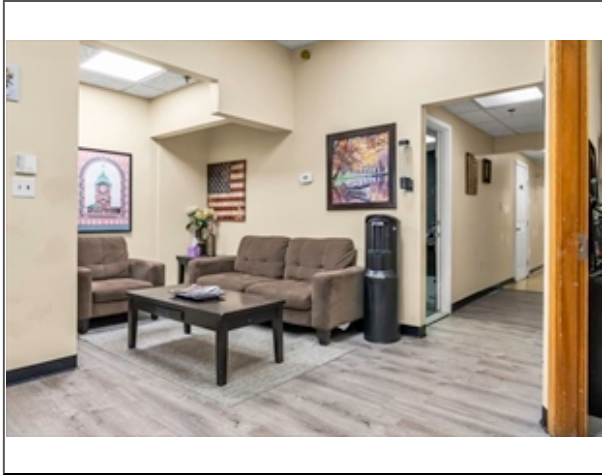
MLS # 73410572 - New
464-468 Essex St, Lawrence, MA 01840-1242

Commercial - Office
List Price: \$22



MLS # 73410572 - New
464-468 Essex St, Lawrence, MA 01840-1242

Commercial - Office
List Price: \$22



MLS # 73410572 - New
464-468 Essex St, Lawrence, MA 01840-1242

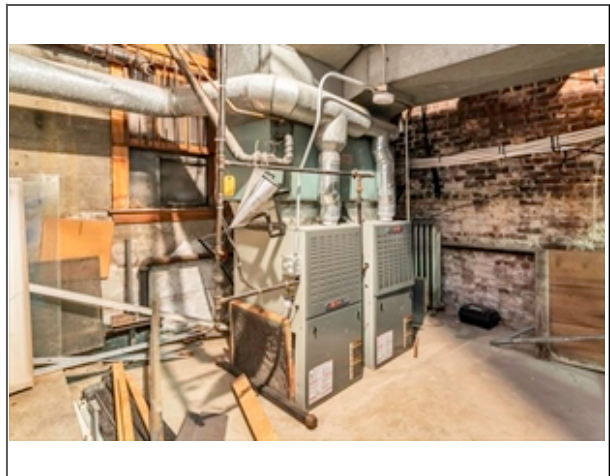
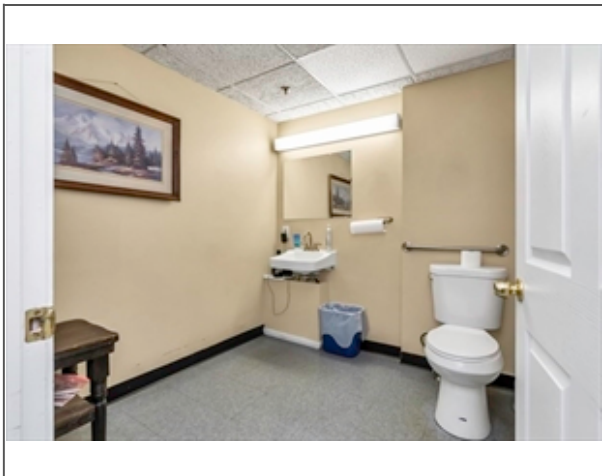
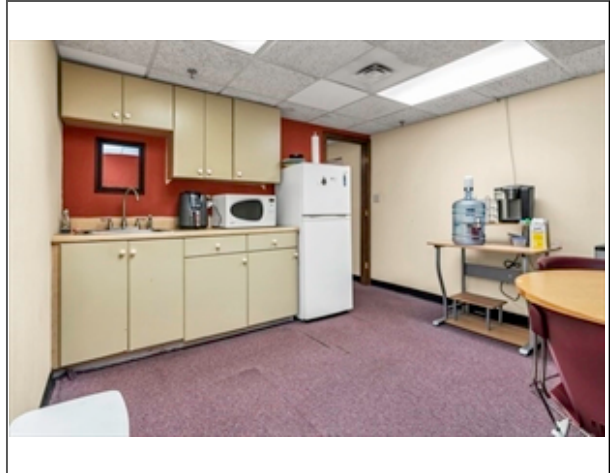
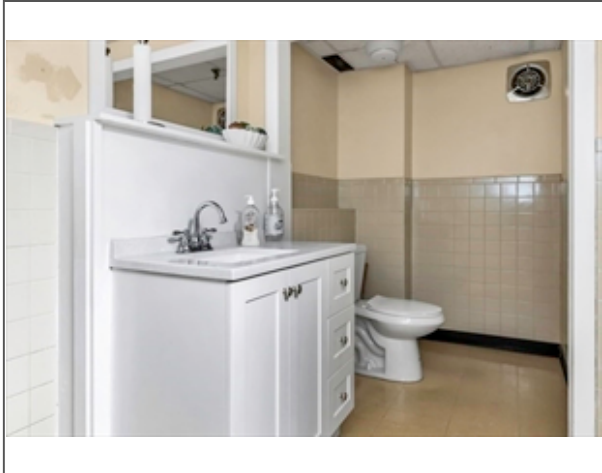
Commercial - Office
List Price: \$22



The information in this listing was gathered from third-party sources including the seller and public records. MLS Property Information Network, Inc., and its subscribers disclaim any and all representations or warranties as to the accuracy of this information. Content ©2025 MLS Property Information Network, Inc.

MLS # 73410572 - New
464-468 Essex St, Lawrence, MA 01840-1242

Commercial - Office
List Price: \$22



The information in this listing was gathered from third-party sources including the seller and public records. MLS Property Information Network, Inc., and its subscribers disclaim any and all representations or warranties as to the accuracy of this information. Content ©2025 MLS Property Information Network, Inc.