

1979 N MILL ST
NAPERVILLE



FOR LEASE

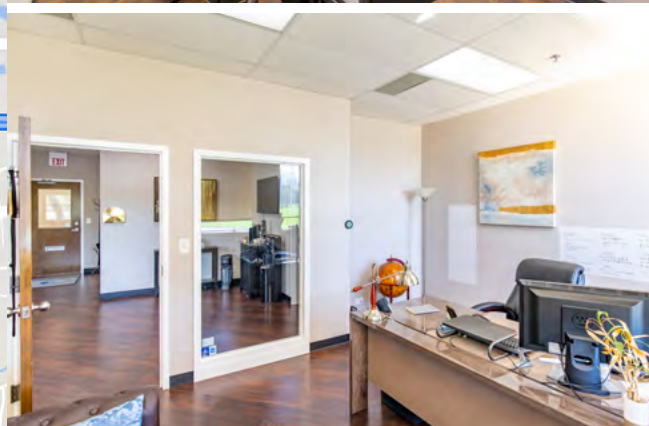
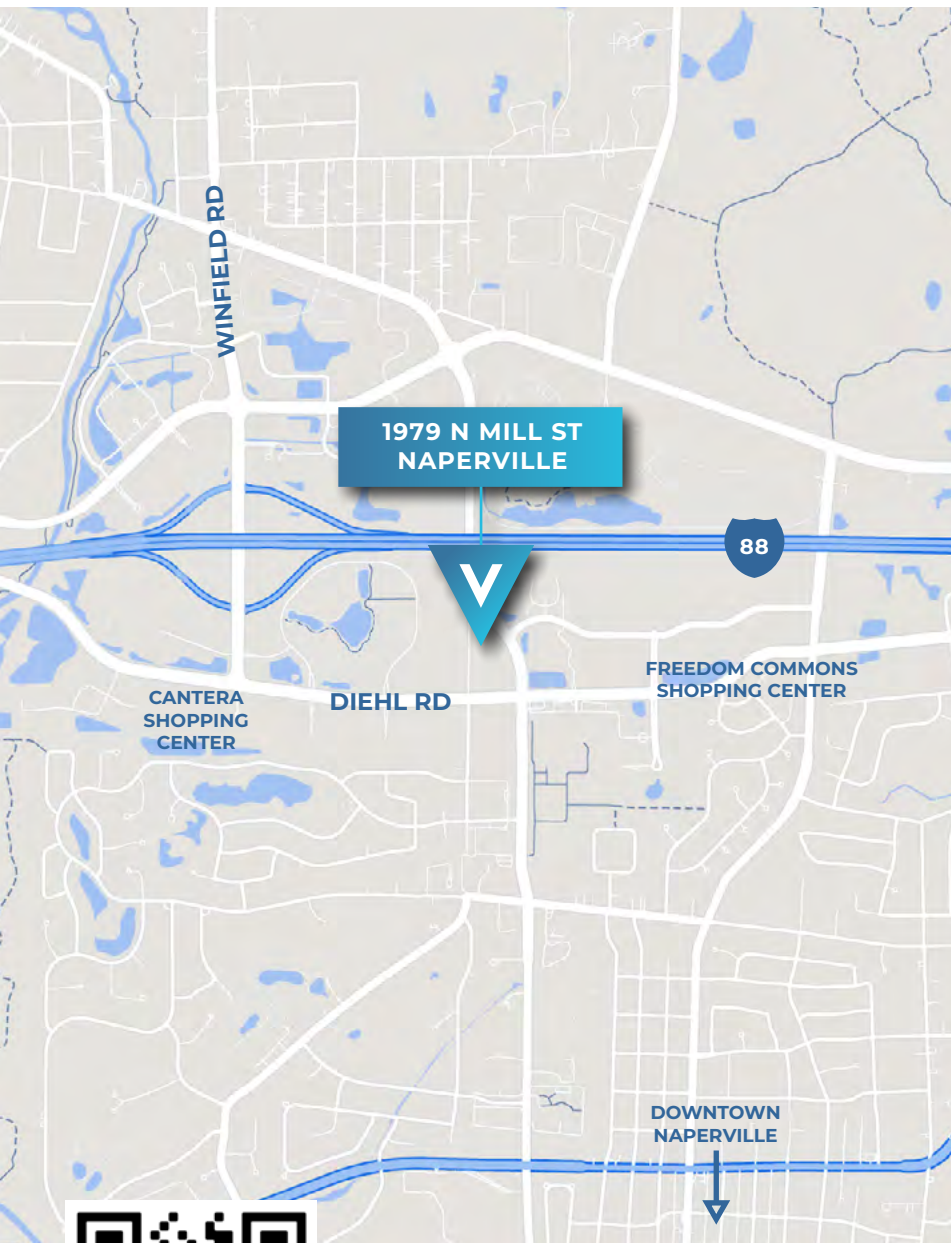
PROPERTY HIGHLIGHTS

- » Asking Rate: \$19.50 PSF / YR MG
- » Available Space: 1,345 - 6,224 SF
- » Expansive Window Line in Suites
- » Built in 2002
- » Minutes from Downtown Naperville & I-88



AREA AMENITIES

- » Close Proximity to the I-88 / Winfield Rd Exit
- » Large Employment Base in Naperville / Aurora and Surrounding Communities
- » Minutes to Downtown Naperville Metra
- » Numerous Fast Serve and Sit Down Dining Options in the Area



RYAN MOEN, SIOR
PRINCIPAL
630.480.6346
RMoen@VersaRES.com

JOHN MILLNER, CCIM
PRINCIPAL
630.480.6342
JMillner@VersaRES.com

VERSA
REAL ESTATE SERVICES