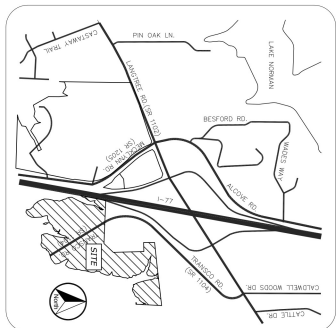
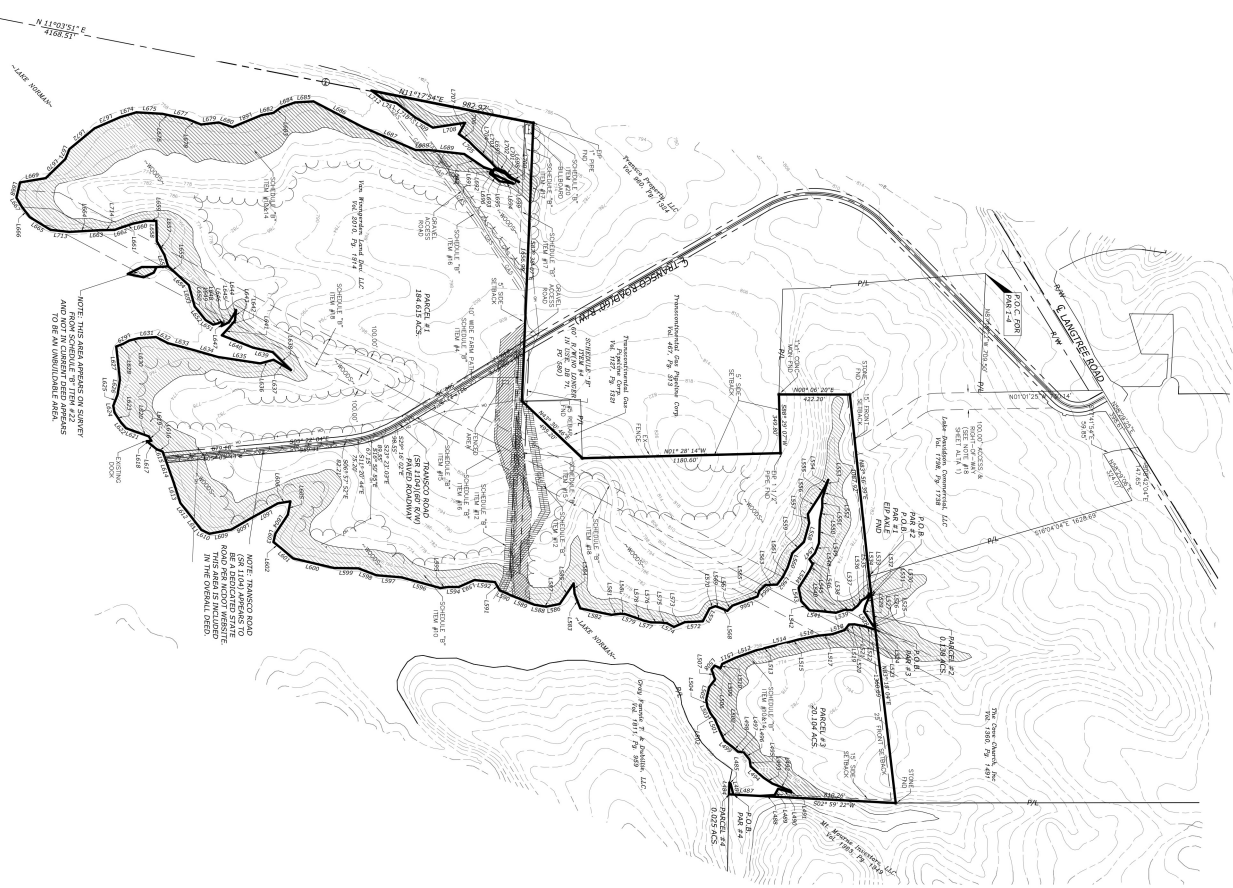


ALTA/ACSM SURVEY

SITUATED IN THE CITY OF MOORESVILLE
COUNTY OF REBEL, STATE OF NORTH CAROLINA



LINE TAG	LINE TAG	LINE TAG	LINE TAG	LINE TAG	LINE TAG
1487 11.20 1487.00 1487.00	1487 11.20 1487.00 1487.00	1487 11.20 1487.00 1487.00	1487 11.20 1487.00 1487.00	1487 11.20 1487.00 1487.00	1487 11.20 1487.00 1487.00



NOTE: GASLINES, POWERLINES AND OTHER UTILITIES SHOWN BASED ON PREVIOUS SURVEYS OF RECORD AND HAVE NOT BEEN PHYSICALLY LOCATED AS PART OF THIS SURVEY.

HATCH LEGEND

[Hatch Pattern]	= 770 CONTOUR - SCHEDULE "B"
[Hatch Pattern]	= SCHEDULE "B" ITEM #10
[Hatch Pattern]	= SCHEDULE "B" ITEM #12
[Hatch Pattern]	= SCHEDULE "B" ITEM #15
[Hatch Pattern]	= SCHEDULE "B" ITEM #16

LEGEND

[Symbol]	MONUMENT BOX	[Symbol]	WATER MAIN
[Symbol]	SET	[Symbol]	WATER METER
[Symbol]	CONCRETE	[Symbol]	WATER VALVE
[Symbol]	REBAR (AS NOTED)	[Symbol]	ELECTRIC TRANSFORMER
[Symbol]	REBAR (AS NOTED)	[Symbol]	ELECTRIC METER
[Symbol]	POWER POLE	[Symbol]	EXISTING FENCE
[Symbol]	CONCRETE	[Symbol]	EXISTING FENCE
[Symbol]	CONCRETE	[Symbol]	CONCRETE
[Symbol]	CONCRETE	[Symbol]	CONCRETE

Van Horn
Hoover
A Maxwell Inc.

Civil Engineering
Land Use Planning
GIS/CAD CONSULTANTS

P.O. BOX 612
FINDLEY, NC 28639
(419) 423-5630
www.vanhornhoover.com

E-Mail: info@vanhornhoover.com

W

PREPARED FOR:
RU WEST
7255 KROSSBERG COURT
TOLLEDO, OH

DATE: 1/3/11

SCALE: 1" = 200'

PROJECT: ALTA 2