

RESTAURANT & EVENT SPACE FOR LEASE IN KOREATOWN

# THE HAYWORTH BUILDING



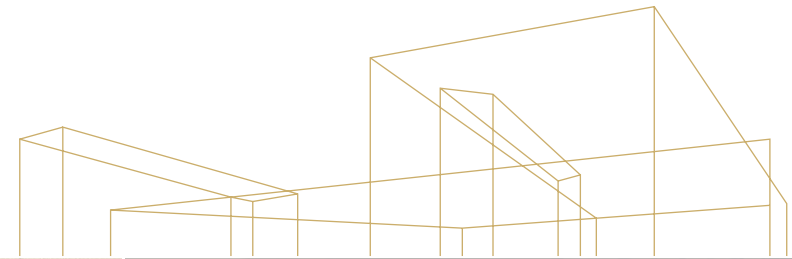
2501 WILSHIRE BLVD, LOS ANGELES, CA 90057

 Kidder  
Mathews

**FOR LEASE**

# The Hayworth Building

2501 WILSHIRE BLVD, LOS ANGELES, CA 90057



## The Hayworth Advantages

**ASKING RATE** \$2.50/SF NNN

**SQUARE FEET** 4,421

**SIGNALIZED** corner location

**WALKING DISTANCE** to Metro Station

**THOUSANDS** of apartment units within a 1-block radius

**POTENTIAL** for patio seating available

**FULL KITCHEN** and walk in freezer

**OPEN FLEXIBLE** design support various events

**FANTASTIC SIGNAGE** off of Wilshire Blvd

**JOHN ANTHONY, SIOR**  
213.225.7218  
john.anthony@kidder.com  
LIC N° 01226464

**CHRISTOPHER STECK, CCIM**  
213.225.7231  
christopher.steck@kidder.com  
LIC N° 01841338

**CHRISTOPHER GIORDANO**  
213.225.7219  
christopher.giordano@kidder.com  
LIC N° 01928706

**TEAM-ASG.COM**  
**KIDDER.COM**

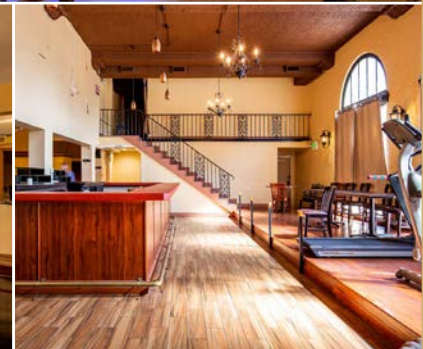
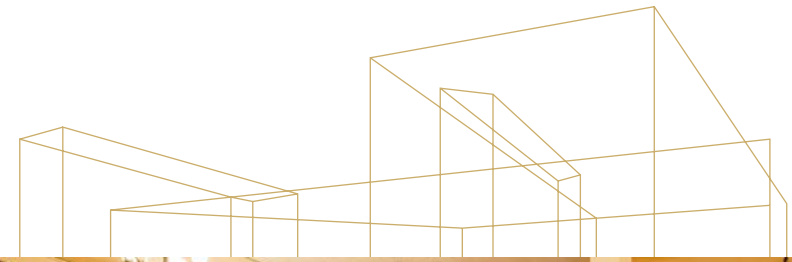


This information supplied herein is from sources we deem reliable. It is provided without any representation, warranty, or guarantee, expressed or implied as to its accuracy. Prospective Buyer or Tenant should conduct an independent investigation and verification of all matters deemed to be material, including, but not limited to, statements of income and expenses. Consult your attorney, accountant, or other professional advisor.

FOR LEASE

# The Hayworth Building

2501 WILSHIRE BLVD, LOS ANGELES, CA 90057



**JOHN ANTHONY, SIOR**  
213.225.7218  
john.anthony@kidder.com  
LIC N° 01226464

**CHRISTOPHER STECK, CCIM**  
213.225.7231  
christopher.steck@kidder.com  
LIC N° 01841338

**CHRISTOPHER GIORDANO**  
213.225.7219  
christopher.giordano@kidder.com  
LIC N° 01928706

TEAM-ASG.COM  
KIDDER.COM

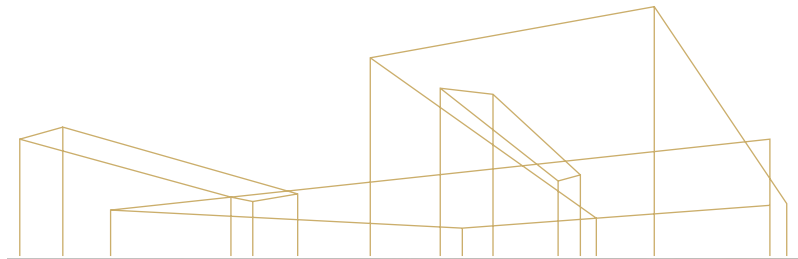


This information supplied herein is from sources we deem reliable. It is provided without any representation, warranty, or guarantee, expressed or implied as to its accuracy. Prospective Buyer or Tenant should conduct an independent investigation and verification of all matters deemed to be material, including, but not limited to, statements of income and expenses. Consult your attorney, accountant, or other professional advisor.

**FOR LEASE**

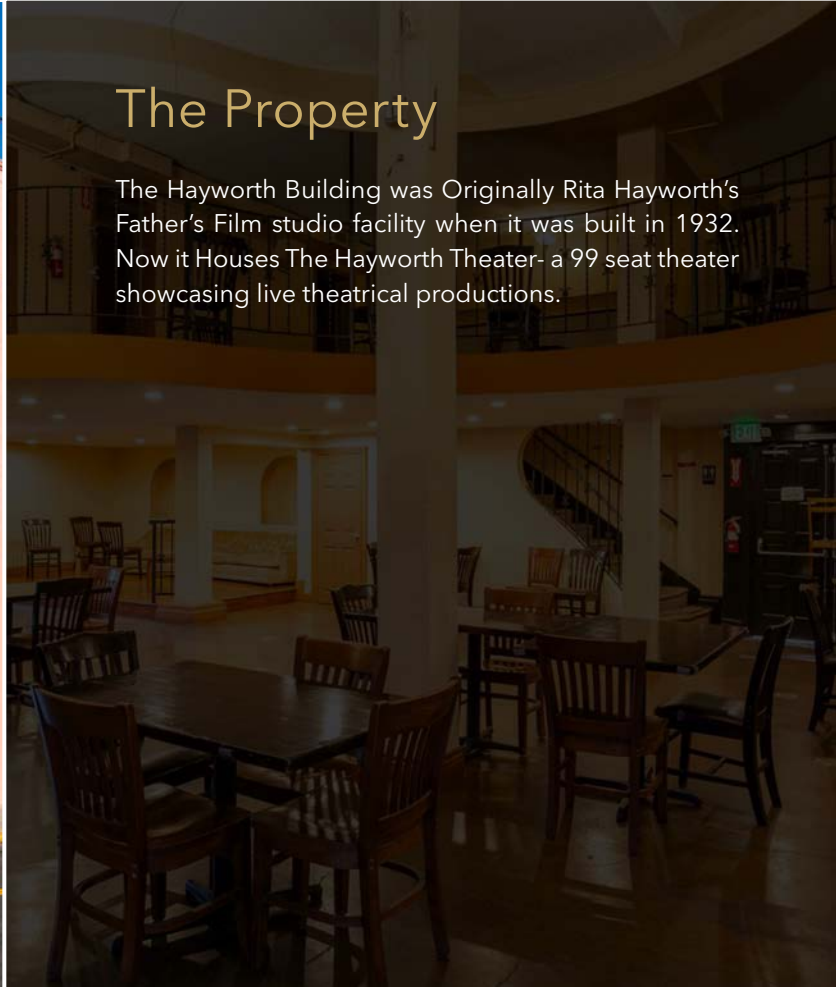
# The Hayworth Building

2501 WILSHIRE BLVD, LOS ANGELES, CA 90057



## The Property

The Hayworth Building was Originally Rita Hayworth's Father's Film studio facility when it was built in 1932. Now it Houses The Hayworth Theater- a 99 seat theater showcasing live theatrical productions.



**JOHN ANTHONY, SIOR**  
213.225.7218  
john.anthony@kidder.com  
LIC N° 01226464

**CHRISTOPHER STECK, CCIM**  
213.225.7231  
christopher.steck@kidder.com  
LIC N° 01841338

**CHRISTOPHER GIORDANO**  
213.225.7219  
christopher.giordano@kidder.com  
LIC N° 01928706

[TEAM-ASG.COM](http://TEAM-ASG.COM)  
[KIDDER.COM](http://KIDDER.COM)

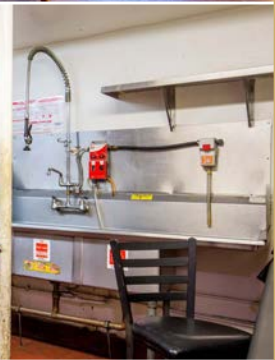
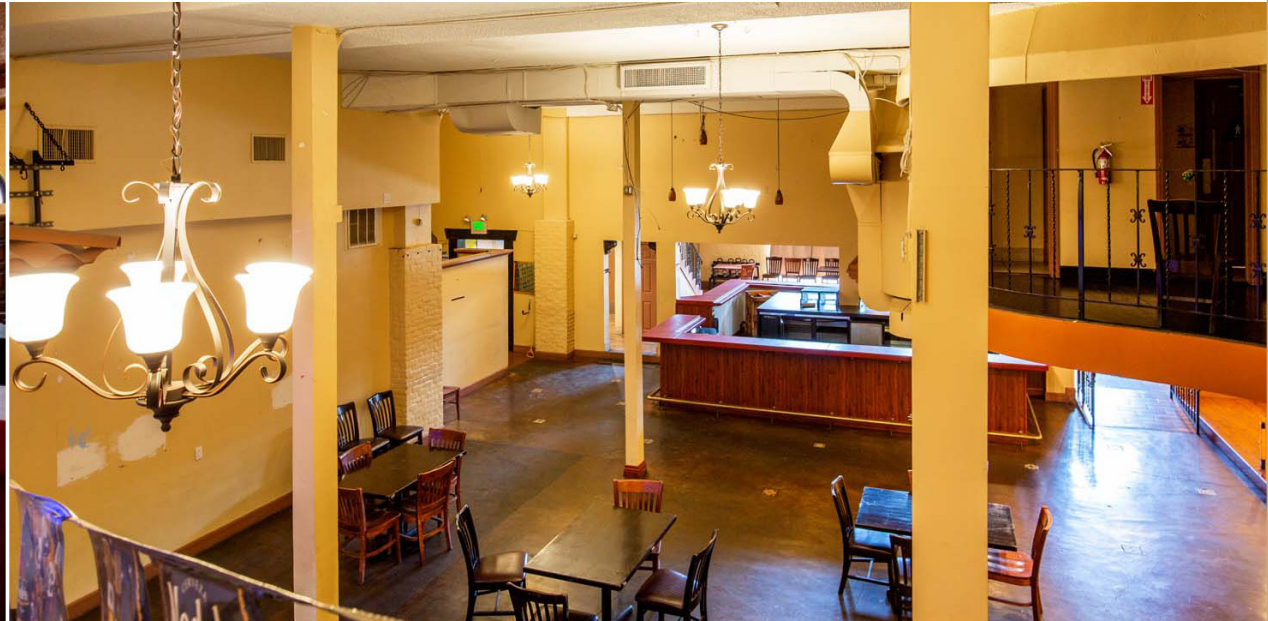
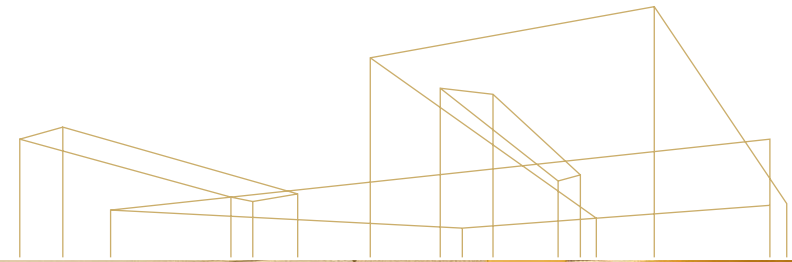
This information supplied herein is from sources we deem reliable. It is provided without any representation, warranty, or guarantee, expressed or implied as to its accuracy. Prospective Buyer or Tenant should conduct an independent investigation and verification of all matters deemed to be material, including, but not limited to, statements of income and expenses. Consult your attorney, accountant, or other professional advisor.



FOR LEASE

# The Hayworth Building

2501 WILSHIRE BLVD, LOS ANGELES, CA 90057



**JOHN ANTHONY, SIOR**  
213.225.7218  
john.anthony@kidder.com  
LIC N° 01226464

**CHRISTOPHER STECK, CCIM**  
213.225.7231  
christopher.steck@kidder.com  
LIC N° 01841338

**CHRISTOPHER GIORDANO**  
213.225.7219  
christopher.giordano@kidder.com  
LIC N° 01928706

TEAM-ASG.COM  
KIDDER.COM

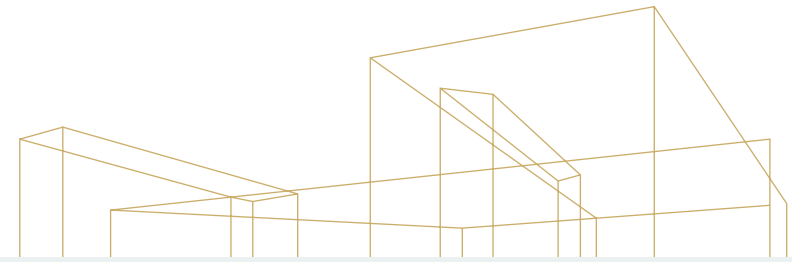
This information supplied herein is from sources we deem reliable. It is provided without any representation, warranty, or guarantee, expressed or implied as to its accuracy. Prospective Buyer or Tenant should conduct an independent investigation and verification of all matters deemed to be material, including, but not limited to, statements of income and expenses. Consult your attorney, accountant, or other professional advisor.



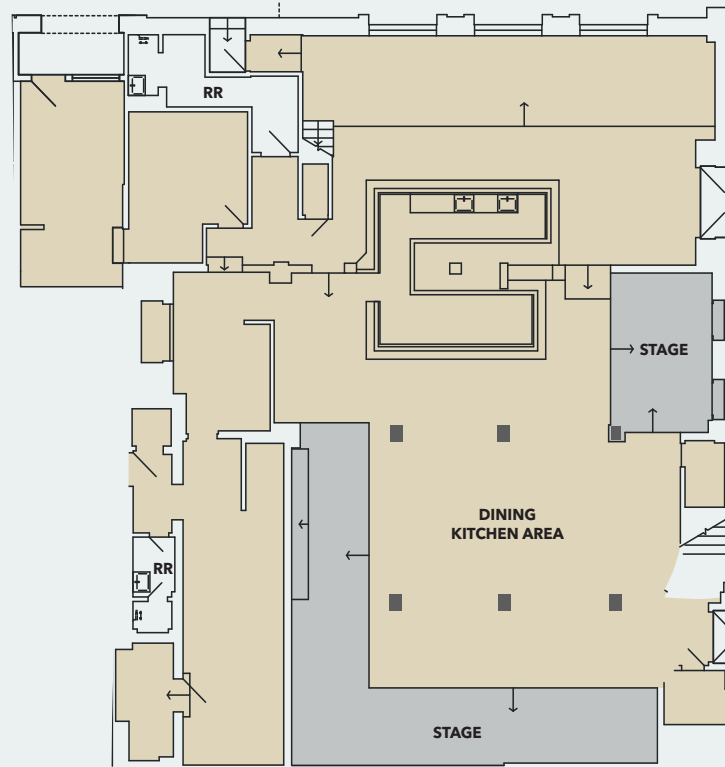
**FOR LEASE**

# The Hayworth Building

2501 WILSHIRE BLVD, LOS ANGELES, CA 90057



## 1<sup>st</sup> Floor



**JOHN ANTHONY, SIOR**  
213.225.7218  
john.anthony@kidder.com  
LIC N° 01226464

**CHRISTOPHER STECK, CCIM**  
213.225.7231  
christopher.steck@kidder.com  
LIC N° 01841338

**CHRISTOPHER GIORDANO**  
213.225.7219  
christopher.giordano@kidder.com  
LIC N° 01928706

TEAM-ASG.COM  
KIDDER.COM

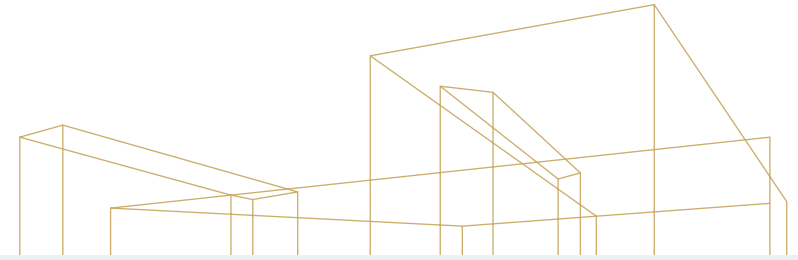
This information supplied herein is from sources we deem reliable. It is provided without any representation, warranty, or guarantee, expressed or implied as to its accuracy. Prospective Buyer or Tenant should conduct an independent investigation and verification of all matters deemed to be material, including, but not limited to, statements of income and expenses. Consult your attorney, accountant, or other professional advisor.



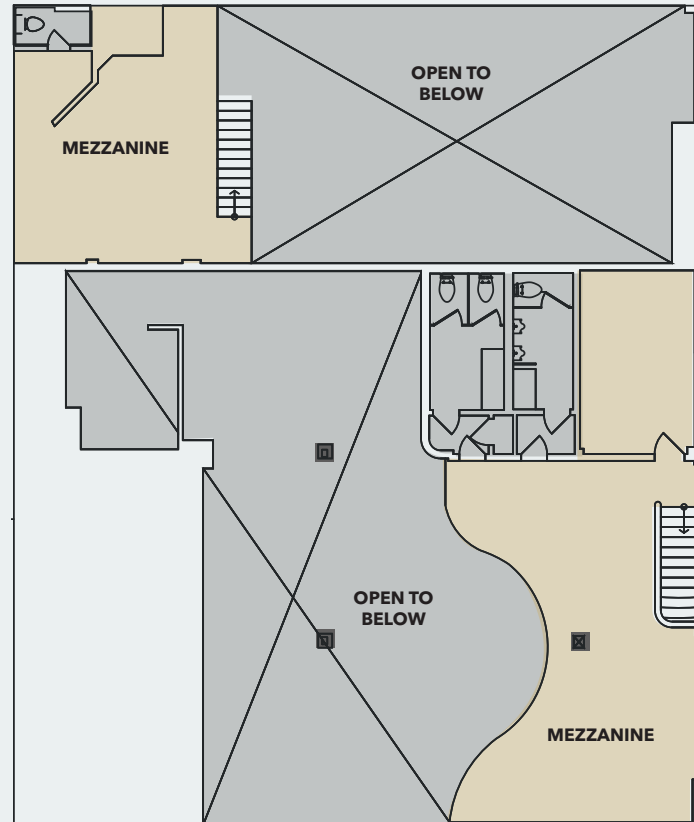
**FOR LEASE**

# The Hayworth Building

2501 WILSHIRE BLVD, LOS ANGELES, CA 90057



## 2<sup>nd</sup> Floor



**JOHN ANTHONY, SIOR**  
213.225.7218  
john.anthony@kidder.com  
LIC N° 01226464

**CHRISTOPHER STECK, CCIM**  
213.225.7231  
christopher.steck@kidder.com  
LIC N° 01841338

**CHRISTOPHER GIORDANO**  
213.225.7219  
christopher.giordano@kidder.com  
LIC N° 01928706

TEAM-ASG.COM  
KIDDER.COM

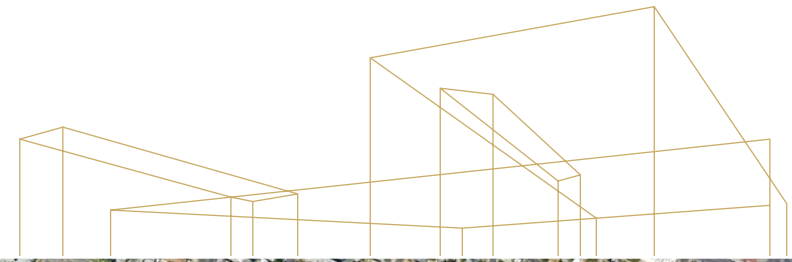


This information supplied herein is from sources we deem reliable. It is provided without any representation, warranty, or guarantee, expressed or implied as to its accuracy. Prospective Buyer or Tenant should conduct an independent investigation and verification of all matters deemed to be material, including, but not limited to, statements of income and expenses. Consult your attorney, accountant, or other professional advisor.

FOR LEASE

# The Hayworth Building

2501 WILSHIRE BLVD, LOS ANGELES, CA 90057



Available  
Parking



**JOHN ANTHONY, SIOR**  
213.225.7218  
john.anthony@kidder.com  
LIC N° 01226464

**CHRISTOPHER STECK, CCIM**  
213.225.7231  
christopher.steck@kidder.com  
LIC N° 01841338

**CHRISTOPHER GIORDANO**  
213.225.7219  
christopher.giordano@kidder.com  
LIC N° 01928706

TEAM-ASG.COM  
KIDDER.COM

This information supplied herein is from sources we deem reliable. It is provided without any representation, warranty, or guarantee, expressed or implied as to its accuracy. Prospective Buyer or Tenant should conduct an independent investigation and verification of all matters deemed to be material, including, but not limited to, statements of income and expenses. Consult your attorney, accountant, or other professional advisor.

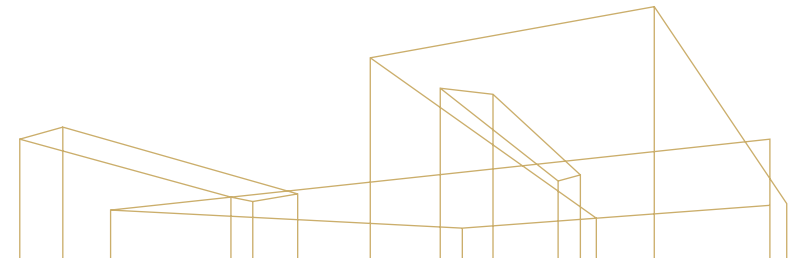




FOR LEASE

# The Hayworth Building

2501 WILSHIRE BLVD, LOS ANGELES, CA 90057



**JOHN ANTHONY, SIOR**  
213.225.7218  
john.anthony@kidder.com  
LIC N° 01226464

**CHRISTOPHER STECK, CCIM**  
213.225.7231  
christopher.steck@kidder.com  
LIC N° 01841338

**CHRISTOPHER GIORDANO**  
213.225.7219  
christopher.giordano@kidder.com  
LIC N° 01928706

TEAM-ASG.COM  
KIDDER.COM

This information supplied herein is from sources we deem reliable. It is provided without any representation, warranty, or guarantee, expressed or implied as to its accuracy. Prospective Buyer or Tenant should conduct an independent investigation and verification of all matters deemed to be material, including, but not limited to, statements of income and expenses. Consult your attorney, accountant, or other professional advisor.





## For leasing information contact

**JOHN ANTHONY, SIOR**  
213.225.7218  
john.anthony@kidder.com  
LIC N° 01226464

**CHRISTOPHER STECK, CCIM**  
213.225.7231  
christopher.steck@kidder.com  
LIC N° 01841338

**CHRISTOPHER GIORDANO**  
213.225.7219  
christopher.giordano@kidder.com  
LIC N° 01928706

**TEAM-ASG.COM**  
**KIDDER.COM**

This information supplied herein is from sources we deem reliable. It is provided without any representation, warranty, or guarantee, expressed or implied as to its accuracy. Prospective Buyer or Tenant should conduct an independent investigation and verification of all matters deemed to be material, including, but not limited to, statements of income and expenses. Consult your attorney, accountant, or other professional advisor.

