



± 29,697 SF TECH OFFICE SPACE AVAILABLE



PROJECT FEATURES

2100 Geng Road

Suite 102: ±3,063 SF Office

Suite 220: ±3,818 SF Office

2300 Geng Road

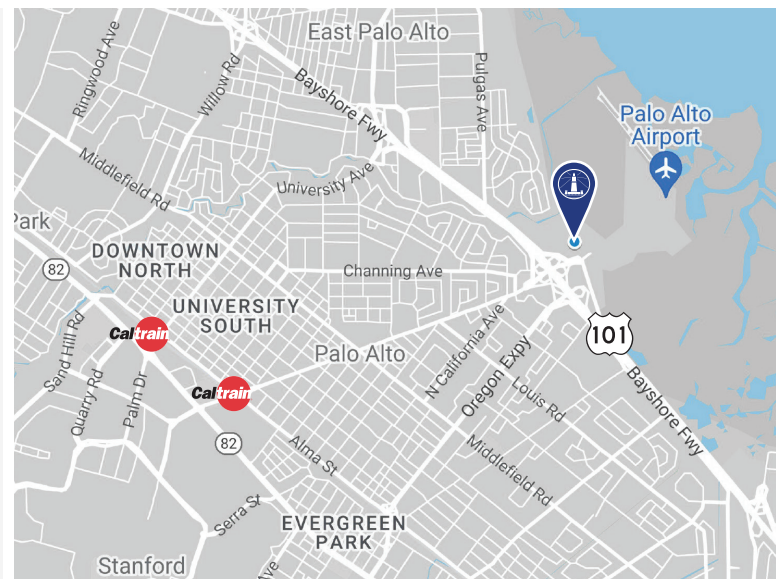
Suite 200: ±11,443 SF Office

2400 Geng Road

Suite 110: ±8,730 SF Office

Suite 175: ±2,643 SF Office

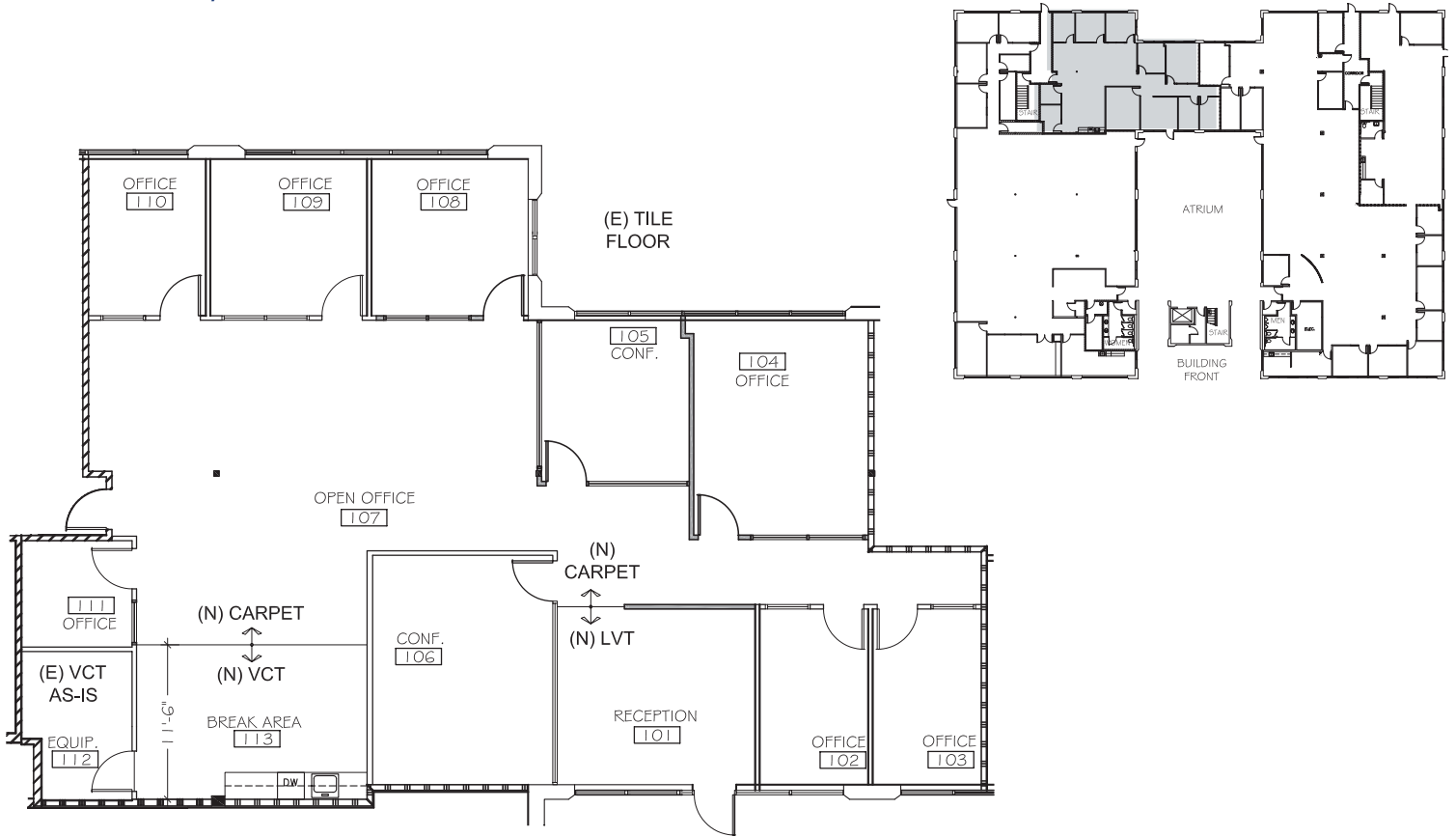
- ±197,500 SF Across Four 2-Story Buildings
- On-Site F&B and Fitness Amenity
- Common Area Upgrades
- Generous, 25,000 SF Floor Plates
- Tranquil, Tree-Lined Landscaping
- Less than 10 Minute Drive to Downtown Palo Alto





FLOOR PLAN

SUITE 102: ±3,063 SF



ALEXANDRIA CONTACT INFORMATION

Todd Miller
Senior Vice President
Regional Leasing

T: 415.554.8846 | M: 650.444.1295
tmiller@are.com

Jeanette Li
Senior Director
Market Research & Leasing

T: 415.321.3816 | M: 415.610.1959
jli@are.com

BROKER CONTACT INFORMATION

Terry Haught
Newmark
T: 650.688.8498 | M: 650.520.5886
terry.haught@nrmk.com
CA RE License #00865107

Randy Scott
Newmark
T: 650.688.8510 | M: 650.465.4222
randy.scott@nrmk.com
CA RE License #00852506

Mary Hines
Newmark
T: 650.358.5271 | M: 510.541.1998
mary.hines@nrmk.com
CA RE License #01281208

Jennifer Vergara
Newmark
T: 650.358.5265 | M: 408.655.8213
jennifer.vergara@nrmk.com
CA RE License #01355979

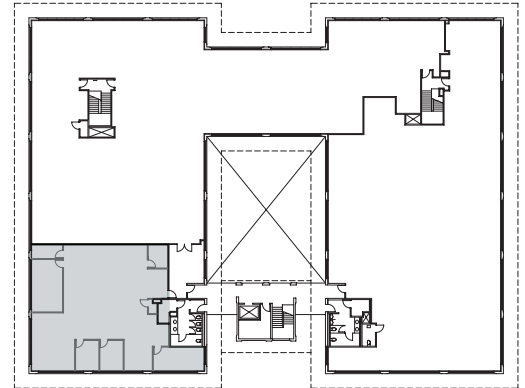
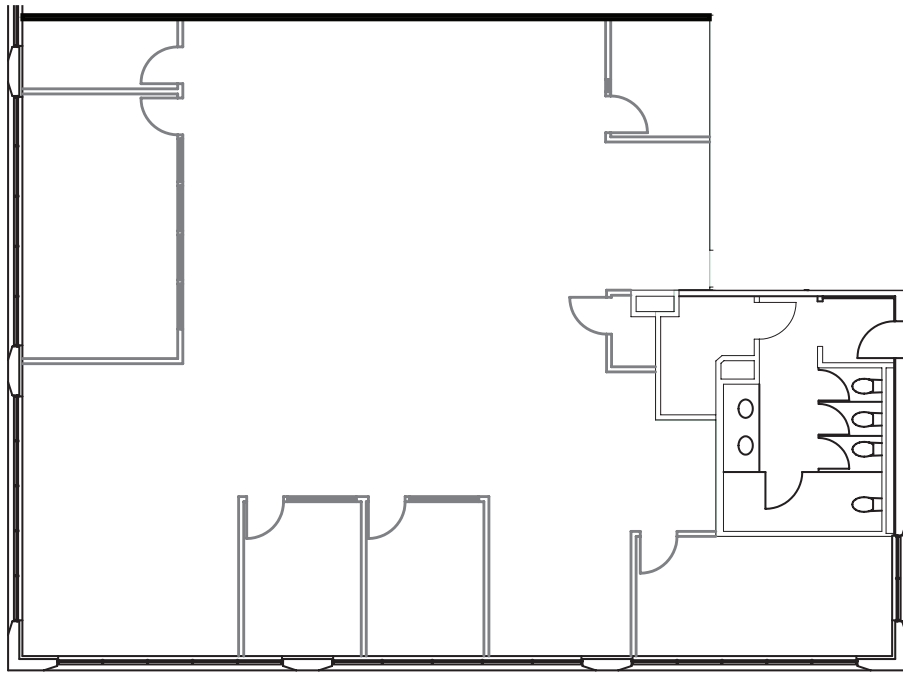
SITE PLAN





FLOOR PLAN

SUITE 220: ±3,818 SF



ALEXANDRIA CONTACT INFORMATION

Todd Miller

Senior Vice President
Regional Leasing

T: 415.554.8846 | M: 650.444.1295
tmiller@are.com

Jeanette Li

Senior Director
Market Research & Leasing

T: 415.321.3816 | M: 415.610.1959
jli@are.com

BROKER CONTACT INFORMATION

Terry Haught

Newmark
T: 650.688.8498 | M: 650.520.5886
terry.haught@nrmk.com
CA RE License #00865107

Randy Scott

Newmark
T: 650.688.8510 | M: 650.465.4222
randy.scott@nrmk.com
CA RE License #00852506

Mary Hines

Newmark
T: 650.358.5271 | M: 510.541.1998
mary.hines@nrmk.com
CA RE License #01281208

Jennifer Vergara

Newmark
T: 650.358.5265 | M: 408.655.8213
jennifer.vergara@nrmk.com
CA RE License #01355979

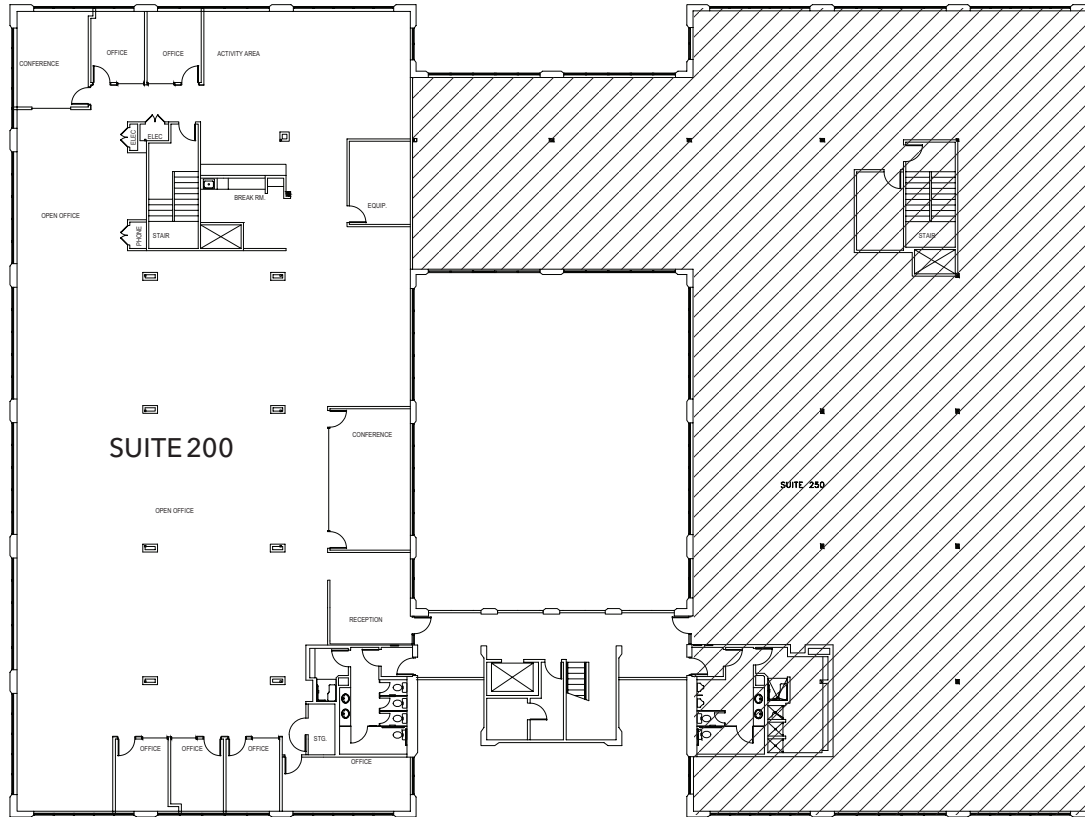
SITE PLAN





FLOOR PLAN

SUITE 200: ±11,443 SF



ALEXANDRIA CONTACT INFORMATION

Todd Miller
Senior Vice President
Regional Leasing

T: 415.554.8846 | M: 650.444.1295
tmiller@are.com

Jeanette Li
Senior Director
Market Research & Leasing

T: 415.321.3816 | M: 415.610.1959
jli@are.com

BROKER CONTACT INFORMATION

Terry Haught
Newmark
T: 650.688.8498 | M: 650.520.5886
terry.haught@nrmk.com
CA RE License #00865107

Randy Scott
Newmark
T: 650.688.8510 | M: 650.465.4222
randy.scott@nrmk.com
CA RE License #00852506

Mary Hines
Newmark
T: 650.358.5271 | M: 510.541.1998
mary.hines@nrmk.com
CA RE License #01281208

Jennifer Vergara
Newmark
T: 650.358.5265 | M: 408.655.8213
jennifer.vergara@nrmk.com
CA RE License #01355979

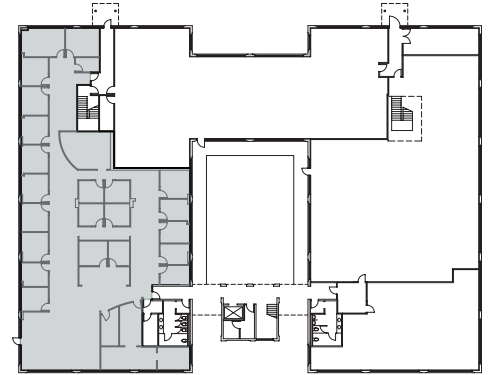
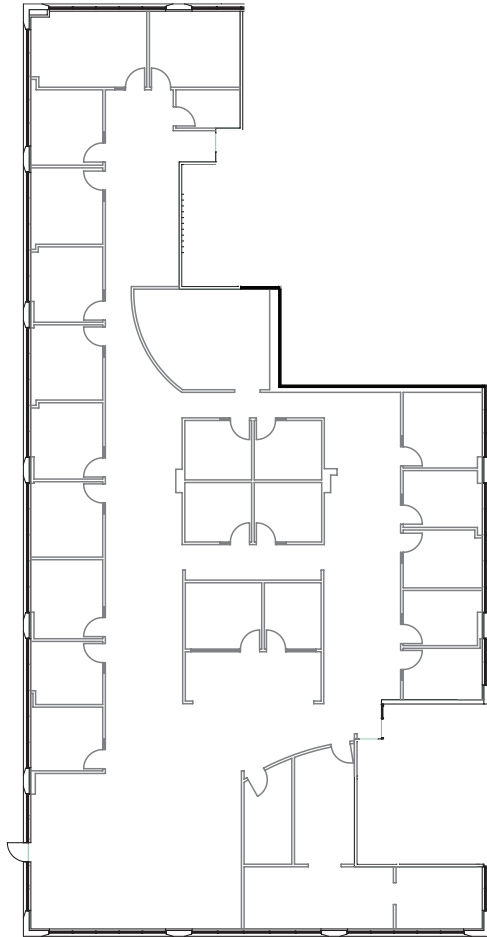
SITE PLAN





FLOOR PLAN

SUITE 110: ±8,730 SF



ALEXANDRIA CONTACT INFORMATION

Todd Miller

Senior Vice President
Regional Leasing

T: 415.554.8846 | M: 650.444.1295
tmiller@are.com

Jeanette Li

Senior Director
Market Research & Leasing

T: 415.321.3816 | M: 415.610.1959
jli@are.com

BROKER CONTACT INFORMATION

Terry Haught

Newmark
T: 650.688.8498 | M: 650.520.5886
terry.haught@nrmk.com
CA RE License #00865107

Randy Scott

Newmark
T: 650.688.8510 | M: 650.465.4222
randy.scott@nrmk.com
CA RE License #00852506

Mary Hines

Newmark
T: 650.358.5271 | M: 510.541.1998
mary.hines@nrmk.com
CA RE License #01281208

Jennifer Vergara

Newmark
T: 650.358.5265 | M: 408.655.8213
jennifer.vergara@nrmk.com
CA RE License #01355979

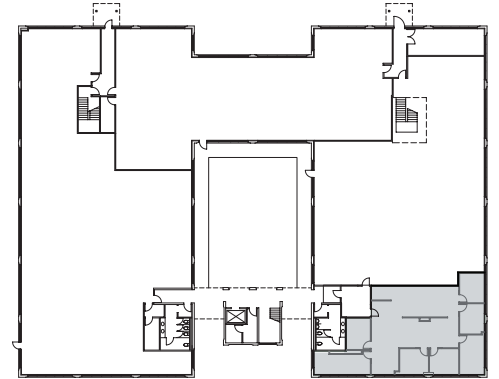
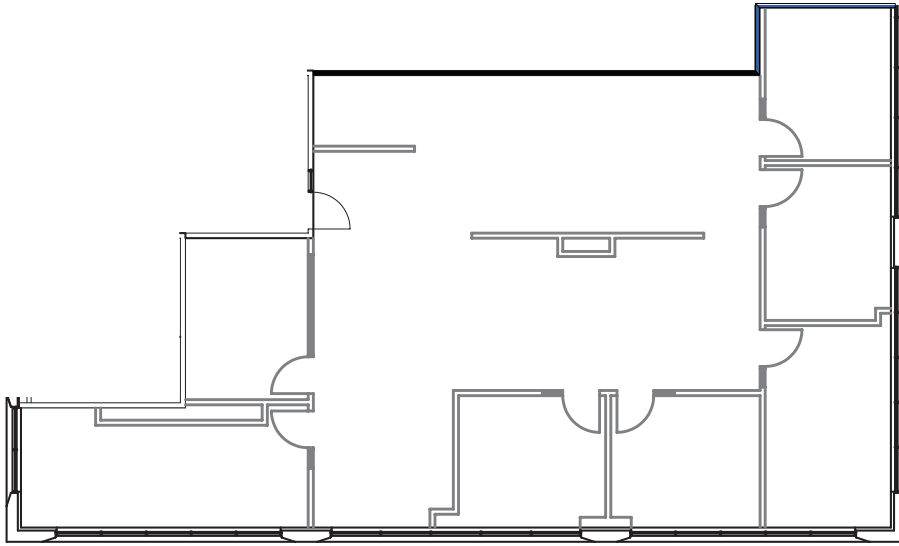
SITE PLAN





FLOOR PLAN

SUITE 175: ±2,643 SF



ALEXANDRIA CONTACT INFORMATION

Todd Miller

Senior Vice President
Regional Leasing

T: 415.554.8846 | M: 650.444.1295
tmiller@are.com

Jeanette Li

Senior Director
Market Research & Leasing

T: 415.321.3816 | M: 415.610.1959
jli@are.com

BROKER CONTACT INFORMATION

Terry Haught

Newmark
T: 650.688.8498 | M: 650.520.5886
terry.haught@nmrk.com
CA RE License #00865107

Randy Scott

Newmark
T: 650.688.8510 | M: 650.465.4222
randy.scott@nmrk.com
CA RE License #00852506

Mary Hines

Newmark
T: 650.358.5271 | M: 510.541.1998
mary.hines@nmrk.com
CA RE License #01281208

Jennifer Vergara

Newmark
T: 650.358.5265 | M: 408.655.8213
jennifer.vergara@nmrk.com
CA RE License #01355979

SITE PLAN





COMMON AREA IMPROVEMENTS



ALEXANDRIA CONTACT INFORMATION

Todd Miller

Senior Vice President
Regional Leasing

T: 415.554.8846 | M: 650.444.1295
tmiller@are.com

Jeanette Li

Senior Director
Market Research & Leasing

T: 415.321.3816 | M: 415.610.1959
jli@are.com

BROKER CONTACT INFORMATION

Terry Haught

Newmark
T: 650.688.8498 | M: 650.520.5886
terry.haught@nrmk.com
CA RE License #00865107

Randy Scott

Newmark
T: 650.688.8510 | M: 650.465.4222
randy.scott@nrmk.com
CA RE License #00852506

Mary Hines

Newmark
T: 650.358.5271 | M: 510.541.1998
mary.hines@nrmk.com
CA RE License #01281208

Jennifer Vergara

Newmark
T: 650.358.5265 | M: 408.655.8213
jennifer.vergara@nrmk.com
CA RE License #01355979

ABOUT ALEXANDRIA

Alexandria Real Estate Equities, Inc. (NYSE:ARE), an S&P 500® company, is an urban office REIT uniquely focused on collaborative life science and technology campuses in AAA innovation cluster locations, including Greater Boston, San Francisco, New York City, San Diego, Seattle, Maryland, and Research Triangle Park. Alexandria has a longstanding and proven track record of developing Class A properties clustered in urban life science and technology campuses that provide its innovative tenants with highly dynamic and collaborative environments that enhance their ability to successfully recruit and retain world-class talent and inspire productivity, efficiency, creativity, and success.

A project owned and managed by ARE-San Francisco No. 12, LLC. The description of the property set forth herein is provided for informational purposes only without representation or warranty of any kind to its accuracy or completeness by ARE-San Francisco No. 12, LLC.

COPYRIGHT © 2022. ALEXANDRIA REAL ESTATE EQUITIES, INC. ALL RIGHTS RESERVED.