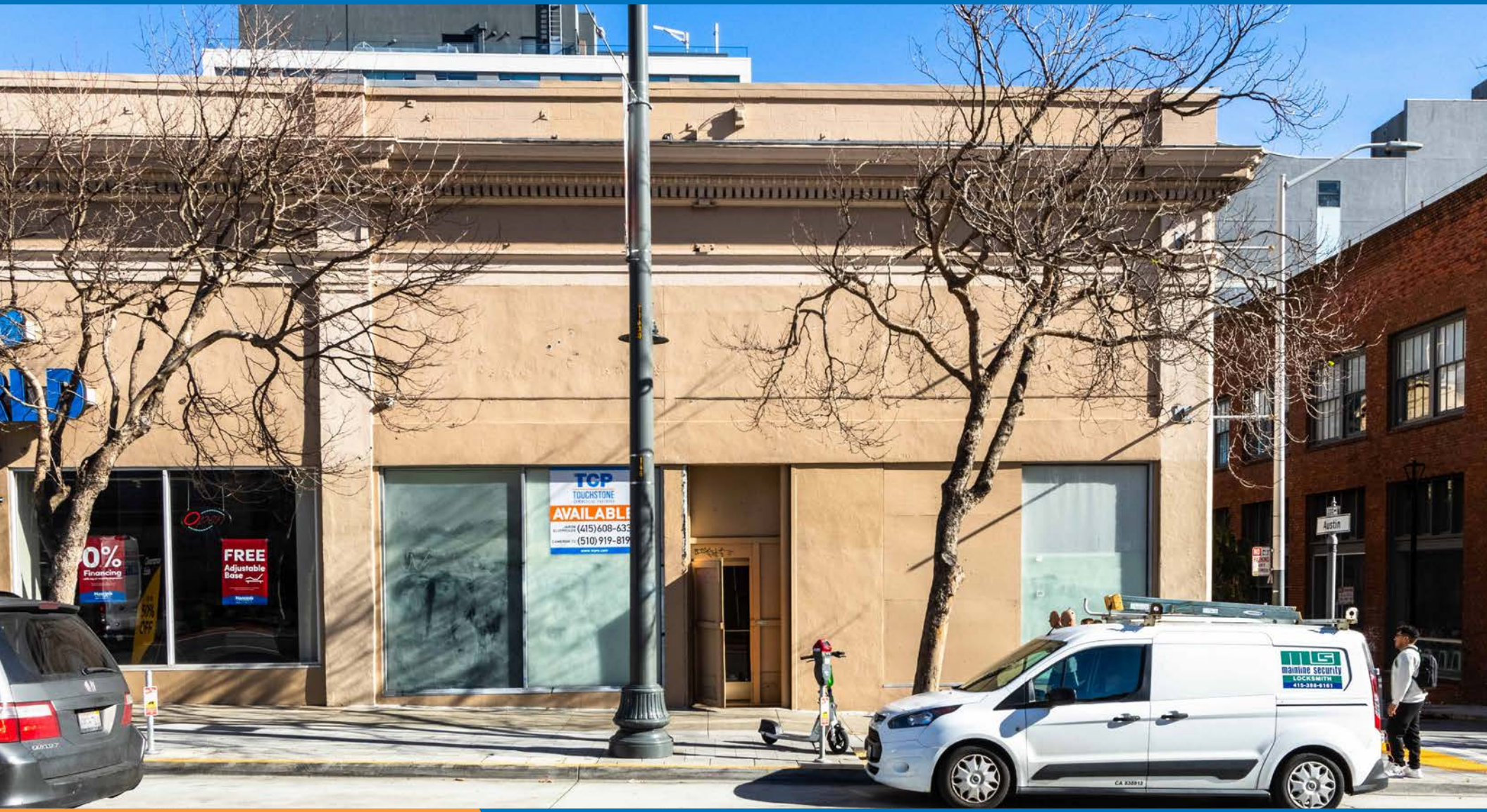


# 1430 VAN NESS AVENUE

FOR LEASE | PROMINENT CORNER RETAIL SPACE NEXT TO ANCHOR TENANTS

**TCP**  
**TOUCHSTONE**  
COMMERCIAL PARTNERS



 **Eliopoulos**Group

**JARON ELIOPOULOS**  
415.608.6336 | jaron@tcpre.com

**CAMERON TU**  
510.919.8193 | cameron@tcpre.com

**VISIT ELIOPOULOSGROUP.COM**

# 1430 VAN NESS AVENUE

## PROPERTY SUMMARY

### ADDRESS

1430 Van Ness Avenue, San Francisco, CA 94109

### AVAILABLE SPACE

+/- 4,255 Square Feet

*\*Potential Parking and Storage Space Available in Garage*

### RENTAL RATE

Call For Pricing

### AVAILABLE

Immediately

## BUILDING ATTRIBUTES

- + Corner Exposure
- + High Visibility Van Ness Corridor Location
- + 40' of Frontage
- + High Ceilings
- + Clear Span Space
- + Potential Parking and Storage Space



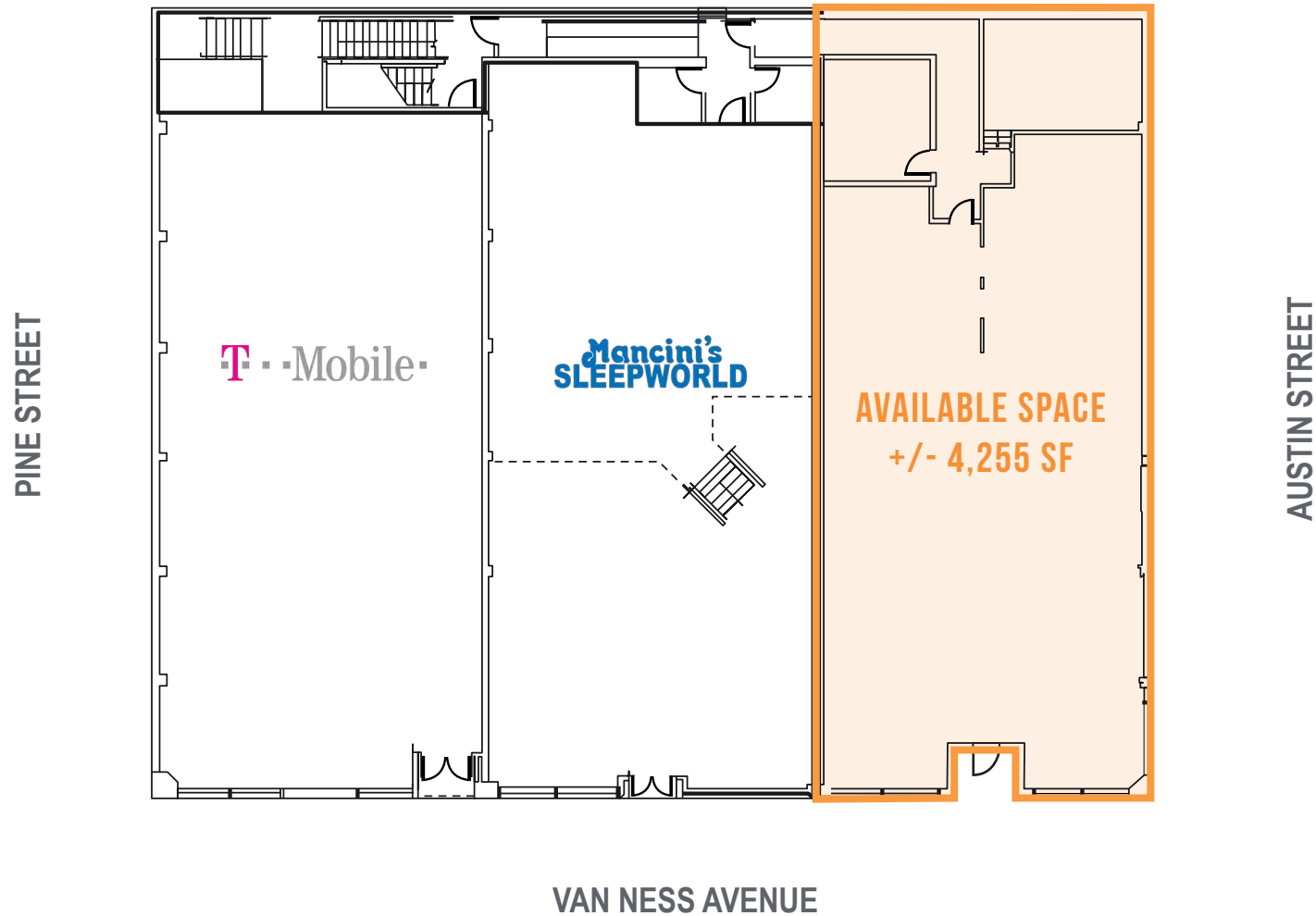
# 1430 VAN NESS AVENUE



# 1430 VAN NESS AVENUE

## FLOOR PLAN

+/- 4,255 Square Feet



# 1430 VAN NESS AVENUE

## LOCATION OVERVIEW

Desirable Van Ness Corridor location, walkable to nearby amenities, public transportation and to surrounding neighborhoods.



**01 MIN** to Bush St Muni  
**06 MIN** to CPMC Van Ness  
**22 MIN** to Civic Center Bart



**05 MIN** to Pacific Heights  
**10 MIN** to Mission District  
**11 MIN** to SOMA



**08 MIN** to 101 On-Ramp  
**12 MIN** to 80 On-Ramp  
**14 MIN** to 280 On-Ramp

# 1430

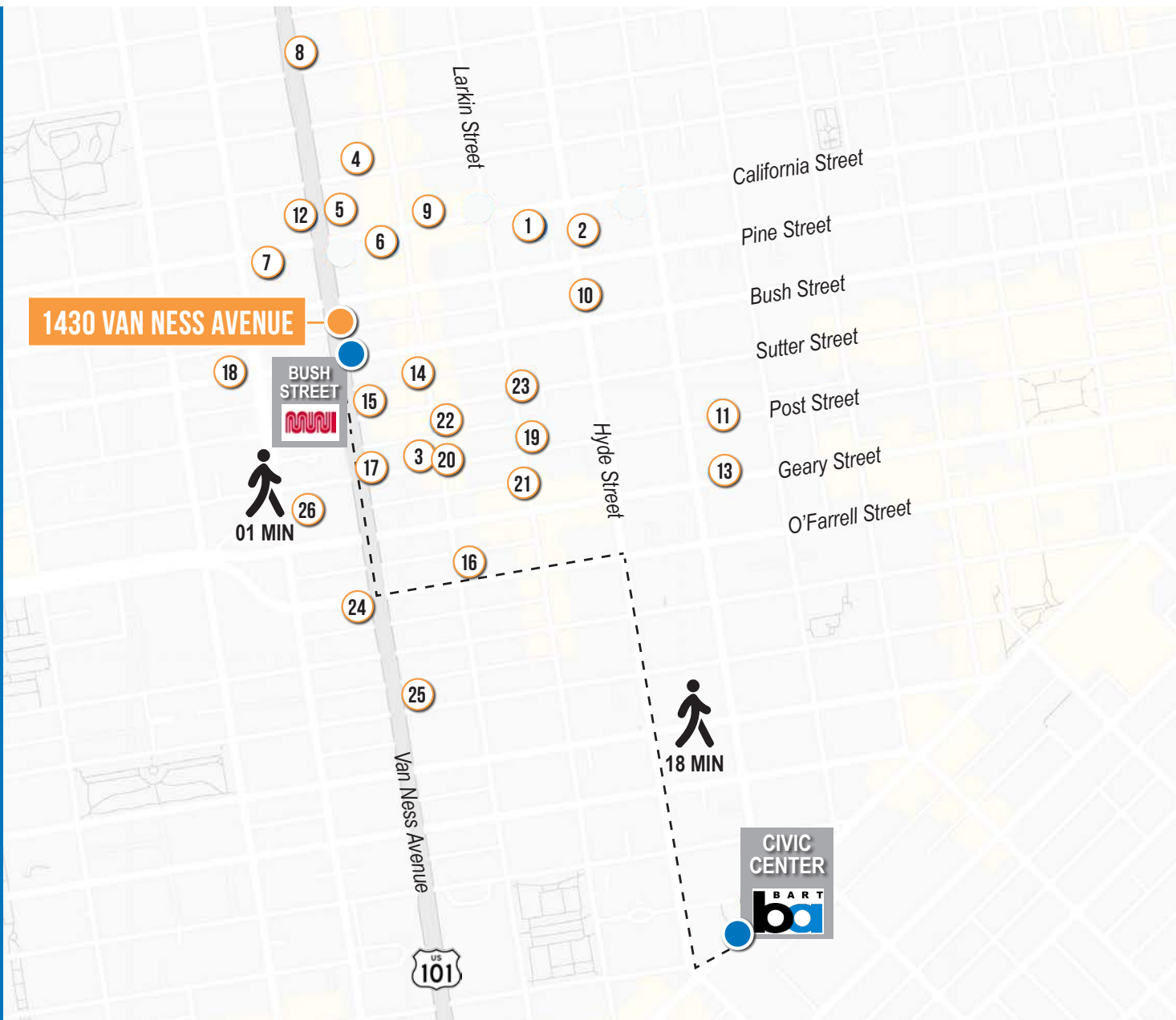
VAN NESS AVENUE



# 1430 VAN NESS AVENUE

## NEARBY AMENITIES

- 1..... Trader Joe's
- 2..... Nourish Cafe
- 3..... Sushi Sato
- 4..... Acquerello
- 5..... Toyota
- 6..... Crustacean Restaurant
- 7..... Whole Foods Market
- 8..... House of Prime Rib
- 9..... Cordon Bleu Restaurant
- 10..... Saint Francis Hospital
- 11..... Farm : Table
- 12..... Guitar Center
- 13..... Mensho Tokyo SF
- 14..... Mayes Oyster House
- 15..... The Regency Ballroom
- 16..... Bread & Butter Market & Deli
- 17..... 24 Hour Fitness
- 18..... Akira Japanese Restaurant
- 19..... Members Only
- 20..... Jackalope
- 21..... Jane on Larkin
- 22..... DecoDance Bar
- 23..... halal DASTARKHAN
- 24..... Tesla
- 25..... Hinata
- 26..... CPMC Van Ness



# 1430 VAN NESS AVENUE



WHOLE FOODS MARKET



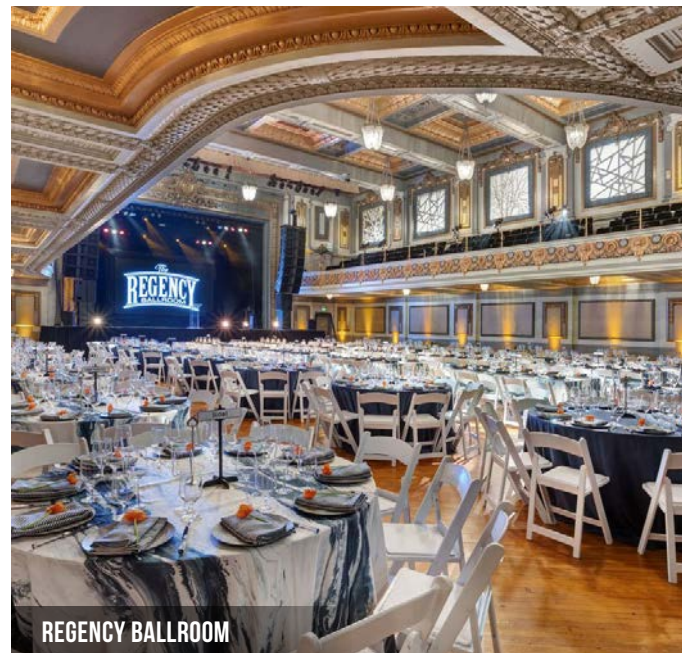
CPMC VAN NESS



TRADER JOES



TESLA



REGENCY BALLROOM

1430 VAN NESS  
AVENUE



**JARON ELIOPOULOS** DRE # 01975155  
415.608.6336 | [jaron@tcpre.com](mailto:jaron@tcpre.com)

**CAMERON TU** DRE # 02100436  
510.919.8193 | [cameron@tcpre.com](mailto:cameron@tcpre.com)

[VISIT ELIOPOULOSGROUP.COM](http://VISITELIOPOULOSGROUP.COM)

Corp. Lic. 01112906  
[www.tcpre.com](http://www.tcpre.com)

The information presented has been secured from sources we believe to be reliable but we make no representations or warranties, expressed or implied, as to the accuracy of the information. Lessee must verify the information and bears all risk for any inaccuracies.