

RIVERWALK PLAZA - PAD SITE • Oklahoma City, OK



**2109-2139 Riverwalk Drive
OKLAHOMA CITY, OK**

NEGOTIABLE

- 13,068 SF AVAILABLE (MOL)
- Pad Site - BTS/Lease
- Pylon Signage
- High Traffic Count Area
- Ample Parking

Property Description

A 26,939 square foot, "L-shaped" strip center built in 1999. This one-story, retail center is constructed of brick veneer with retail glass fronts. The center sits on 2.64 acres with ample parking, and easy access from S.W. 19th Street and the I-35 Service Road. High visibility and class "A" curb appeal. Riverwalk's traffic counts are well over 90,000 VPD. The City of Moore's average household income in both a three and five mile radius is in excess of the national average.

Location Description

Conveniently located on the west side of I-35 & south of SW 19th Street in Moore, Oklahoma. Riverwalk is situated in the heart of Moore's thriving retail district, which includes prime retailers, hotel chains, national and local tenants, and the Warren Theatre--the world's first digital cinema with seating for 3,200.

Demographic Highlights

	1 Mile	3 Miles	5 Miles
Total Population	5,889	60,709	114,625
Population Density	5,889	60,709	114,625
Median Age	31.2	32.4	34.0
Total Households	2,204	22,907	43,569
# of Persons Per HH	2.7	2.7	2.6
Average HH Income	\$67,003	\$65,122	\$70,474
Average House Value	\$113,948	\$140,068	\$154,598



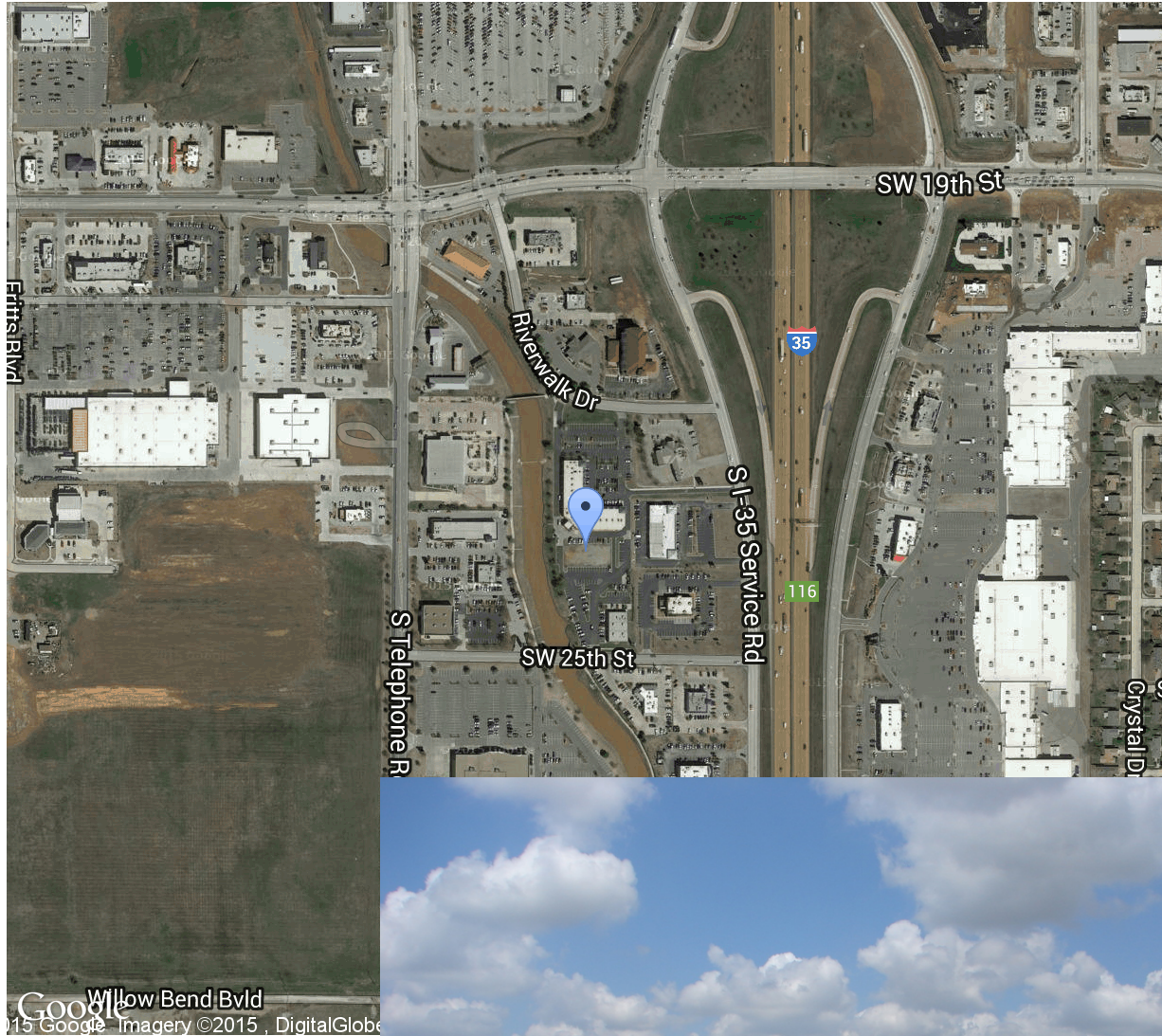
PRECORRUFFIN

Rick Pritchett, CCIM • rick@precorruffin.com • Direct Line: 405.605.0831

**825 N. Broadway Avenue, Suite 300 • Oklahoma City, OK 73102
Phone 405.605.0825 • precorruffin.com**

The information above has been obtained from sources believed reliable. While we do not doubt its accuracy, Precorruffin, LLC has not verified it and makes no guarantee, warranty or representation about it. It is your responsibility to independently confirm its accuracy.

RIVERWALK PLAZA - PAD SITE • Oklahoma City, OK



PRECORRUFFIN

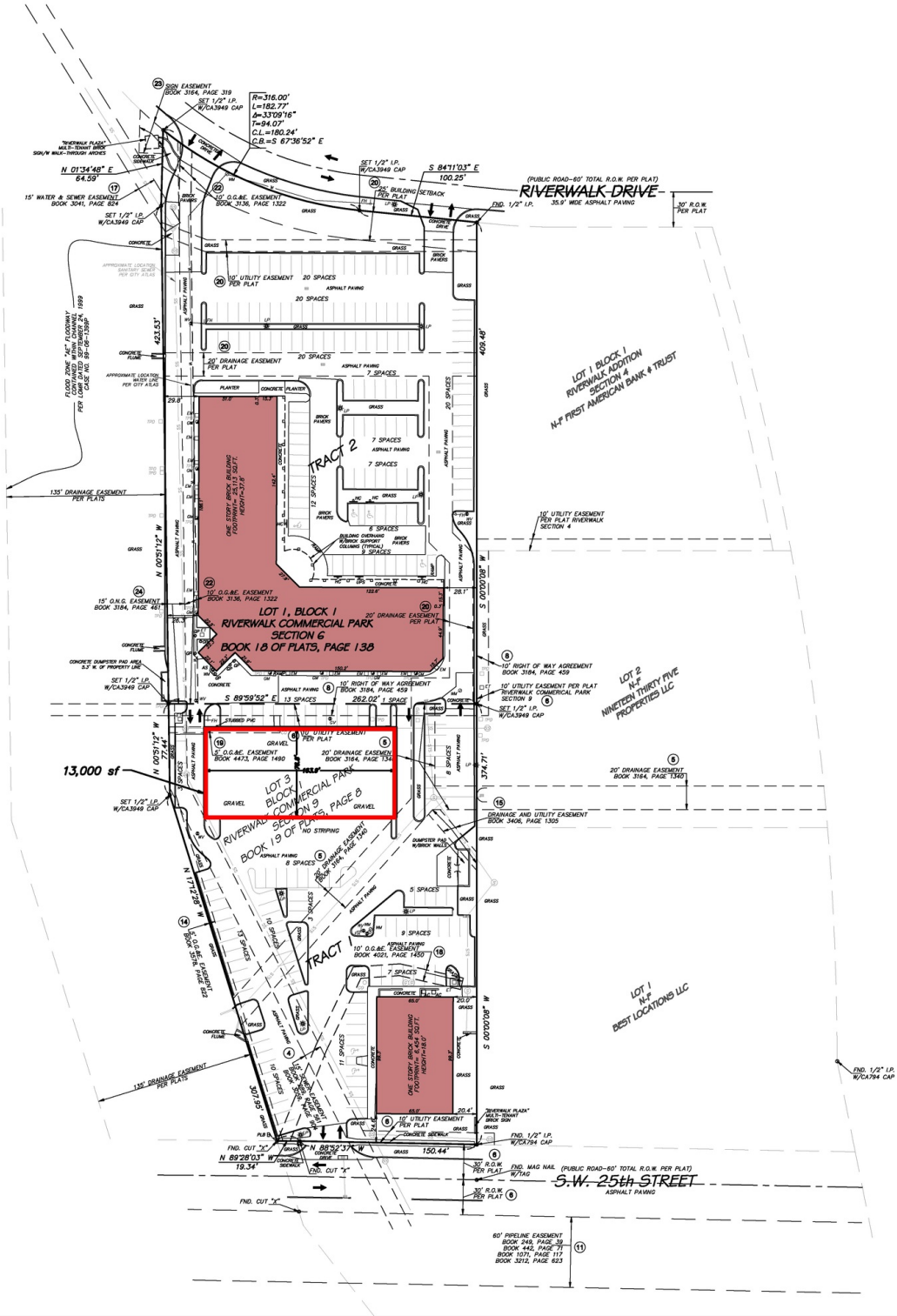
Rick Pritchett, CCIM • rick@precorruffin.com • Direct Line: 405.605.0831

825 N. Broadway Avenue, Suite 300 • Oklahoma City, OK 73102

Phone 405.605.0825 • precorruffin.com

The information above has been obtained from sources believed reliable. While we do not doubt its accuracy, PrecorRuffin, LLC has not verified it and makes no guarantee, warranty or representation about it. It is your responsibility to independently confirm its accuracy.

RIVERWALK PLAZA - PAD SITE • Oklahoma City, OK



PRECORRUFFIN

Rick Pritchett, CCIM • rick@precorruffin.com • Direct Line: 405.605.0831

**825 N. Broadway Avenue, Suite 300 • Oklahoma City, OK 73102
Phone 405.605.0825 • precorruffin.com**

The information above has been obtained from sources believed reliable. While we do not doubt its accuracy, Precorruffin, LLC has not verified it and makes no guarantee, warranty or representation about it. It is your responsibility to independently confirm its accuracy.