

29065



# THE HAGGERTY CORRIDOR CORPORATE PARK

29065 CABOT DRIVE, NOVI, MICHIGAN 48377

SINGLE STORY OFFICE/RESEARCH | 21,550 SF AVAILABLE

HQ OPPORTUNITY IN OAKLAND COUNTY'S PREMIER  
OFFICE AND TECHNOLOGY PARK

NEIGHBORHOOD | AMENITIES | LOCATION | LIFESTYLE

**CBRE**



NORTHERN EQUITIES  
GROUP

# PROPERTY HIGHLIGHTS

50,500 SQUARE FOOT ATTRACTIVE ALL BRICK AND GLASS OFFICE/RESEARCH BUILDING, LOCATED WITHIN METRO DETROIT'S LARGEST CLASS A OFFICE PARK.



Loading dock.  
Grade-level doors can be added



Convenient location at cross-roads of 4 major freeways; I-696, I-275, I-96 and M-5



Single-tenant, all brick and glass structure



Individual entrances to tenant suites



9'6 high Low E glass with 24 hour/7day a week building access



Warehouse R&D area is expandable



Individual rooftop HVAC units



255 parking spaces  
(5.5; 1,000 SF)



Exterior lit signage on building facade, visible from M5



13'3" clear height



Available space is divisible



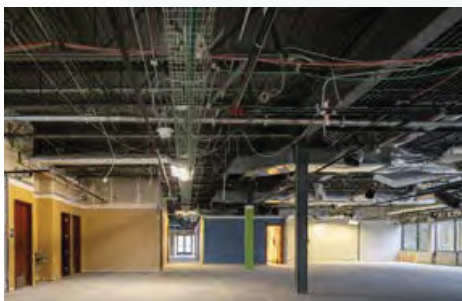
Starbucks at 12 Mile entrance to park

# FLOOR PLAN

**21,550 RSF (DIVISIBLE); (1) TRUCKWELL**

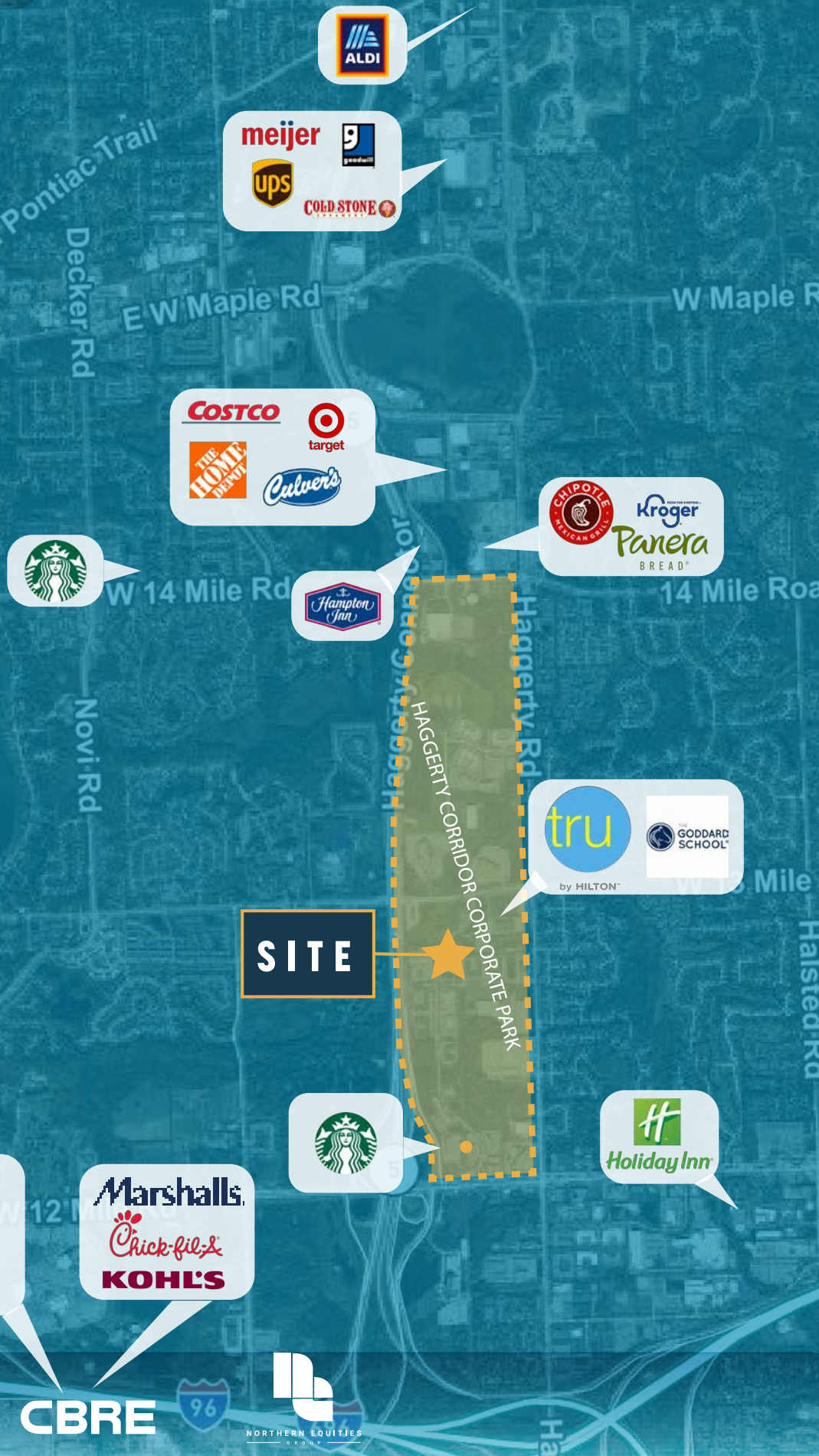
GRADE LEVEL DOORS CAN BE ADDED

TRUCKWELL



Edward Wujek  
+1 248 351 2058  
edward.wujek@cbre.com

Kelly Cubbin  
+1 248 936 6852  
kelly.cubbin@cbre.com



**SITE**

HAGERTY CORRIDOR CORPORATE PARK

**CBRE**



© 2021 CBRE, Inc. All rights reserved. This information has been obtained from sources believed reliable, but has not been verified for accuracy or completeness. Any projections, opinions, or estimates are subject to uncertainty. The information may not represent the current or future performance of the property. You and your advisors should conduct a careful, independent investigation of the property and verify all information. Any reliance on this information is solely at your own risk. CBRE and the CBRE logo are service marks of CBRE, Inc. and/or its affiliated or related companies in the United States and other countries. All other marks displayed on this document are the property of their respective owners. Photos herein are the property of their respective owners and use of these images without the express written consent of the owner is prohibited. PMStudio\_February2019