



Property Description

A 6,500 square foot out-parcel building, located on the northeast corner of S.E. 15th Street and Post Road in Midwest City with frontage on both thoroughfares. Out-parcel building is located in front of Buy For Less, 50,000 square foot grocery store; 43 parking spaces and security lighting. Directly adjacent to Marcos Pizza.

Property Highlights

- RETAIL SPACE FOR LEASE
- 2,266 SF AVAILABLE (MOL)
- NNN (\$3.50)
- Out-Parcel Space
- Excellent Visibility
- High Traffic Counts

Offering Summary

Lease Rate:	\$17.00 SF/yr (NNN)
Available SF:	2,266 SF
Building Size:	6,500 SF

Demographics	1 Mile	3 Miles	5 Miles
Total Households	2,537	15,704	35,075
Total Population	6,301	38,311	86,039
Average HH Income	\$64,590	\$55,300	\$54,001

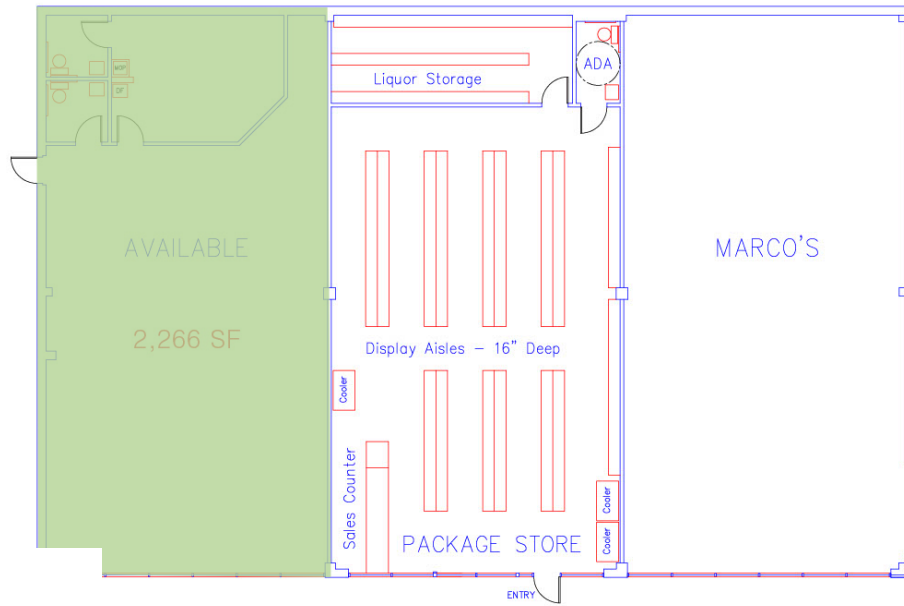
RICK PRITCHETT, CCIM

405.605.0825

rick@precorruffin.com



PRECORRUFFIN



FLOOR PLAN: 10001 S.E. 15

SCALE: 1/8" = 1'-0"

Legend

Available

Lease Information

Lease Type:	NNN	Lease Term:	Negotiable
Total Space:	2,266 SF	Lease Rate:	\$17.00 SF/yr

Available Spaces

Suite	Tenant	Size	Type	Rate	Description
A	Available	2,266 SF	NNN	\$17.00 SF/yr	-

RICK PRITCHETT, CCIM

405.605.0825

rick@precorruffin.com

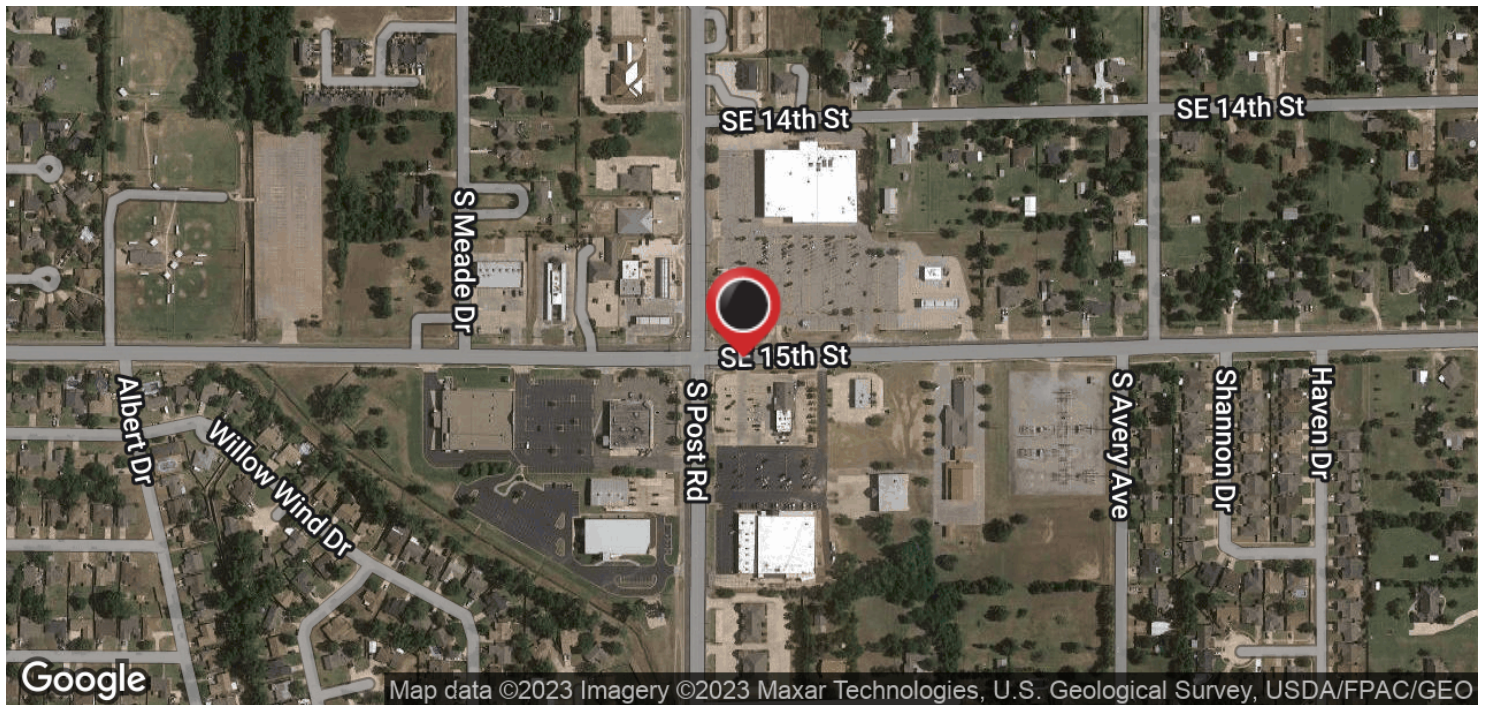
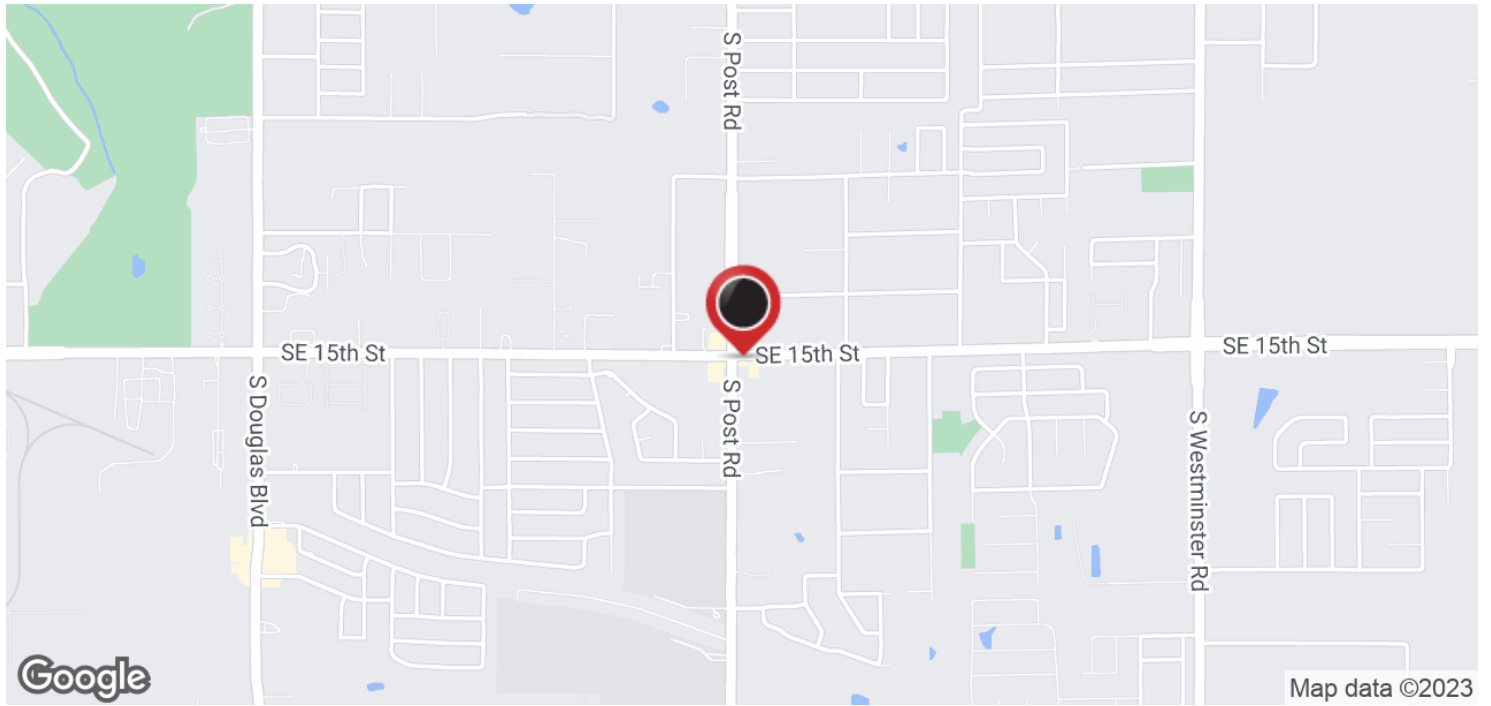


PRECORRUFFIN

For Lease

10001 SE 15th Street

10001 SE 15TH STREET



RICK PRITCHETT, CCIM

405.605.0825

rick@precorruffin.com



PRECORRUFFIN

PRECOR RUFFIN | 825 N. BROADWAY, SUITE 300, OKLAHOMA CITY, OK 73102 | 405.605.0825 | PRECORRUFFIN.COM

The information above has been obtained from sources believed reliable. While we do not doubt its accuracy, PrecorRuffin, LLC has not verified it and makes no guarantee, warranty or representation about it. It is your responsibility to independently confirm its accuracy.