

FOR LEASE

1257 Sweeten Creek Road
Asheville, NC 28803

contact: 828.768.7098 • jwilson@pulliamproperties.com



WESTERN NORTH CAROLINA'S TOP COMMERCIAL REAL ESTATE FIRM

\$15.90/sf NNN

7,110±/SF FLEX OFFICE SPACE ON POPULAR SWEETEN CREEK RD



PROPERTY VIDEO LINK



PROPERTY HIGHLIGHTS

- 7,110±/sf flex office space with ample parking
- Additional 17 parking spaces available at auxillary building
- 10 private offices / Large conference room with table
- Separate work area with a loading truck door
- Great showroom space / 3 restrooms
- Ideal for engineering, tech, medical, professional services, etc.
- UPS, CVS, Ingles & Blue Ridge Parkway nearby



AERIAL VIEW

SITE LOCATION



James Wilson
Commercial Broker

Main Office:
828.684.4344

Mobile:
828.768.7098

Email:
jwilson@pulliamproperties.com

EXPERIENCE MAKES THE DIFFERENCE

©2026 Pulliam Properties: All information regarding property for sale or lease is from sources deemed reliable, but no warranty or representation is made as to the accuracy thereof and the same is submitted subject to errors, omissions, prior sale or lease, change or withdrawal without notice. No liability of any kind is to be imposed on the broker herein.



PULLIAMPROPERTIES.COM

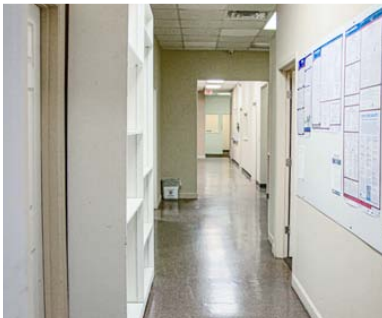
FOR LEASE
1257 Sweeten Creek Road
Asheville, NC 28803

contact: 828.768.7098 • jwilson@pulliamproperties.com



WESTERN NORTH CAROLINA'S TOP COMMERCIAL REAL ESTATE FIRM

INTERIOR SPACE



James Wilson
Commercial Broker

Main Office:
828.684.4344

Mobile:
828.768.7098

Email:
jwilson@pulliamproperties.com

EXPERIENCE MAKES THE DIFFERENCE

©2026 Pulliam Properties: All information regarding property for sale or lease is from sources deemed reliable, but no warranty or representation is made as to the accuracy thereof and the same is submitted subject to errors, omissions, prior sale or lease, change or withdrawal without notice. No liability of any kind is to be imposed on the broker herein.



PULLIAMPROPERTIES.COM

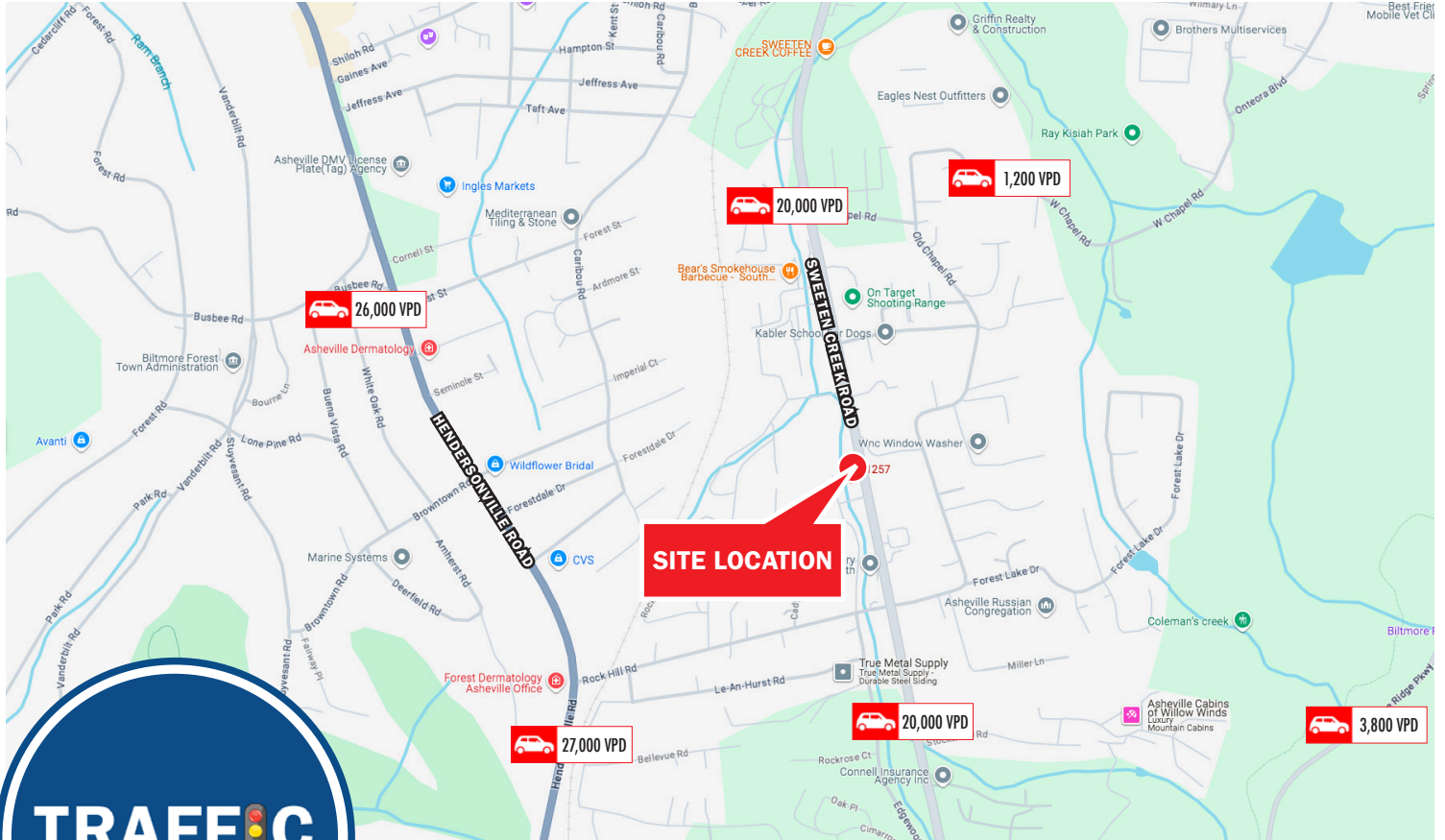
FOR LEASE

1257 Sweeten Creek Road
Asheville, NC 28803

contact: 828.768.7098 • jwilson@pulliamproperties.com



WESTERN NORTH CAROLINA'S TOP COMMERCIAL REAL ESTATE FIRM



MAP CREDIT: GOOGLE MAPS

TRAFFIC INFORMATION

Collection Street	Cross Street	Traffic Volume	Distance
Sweeten Creek Rd	State Rd 3111 N	21,981	0.08 mi
Rock Hill Rd	Rock Hill Rd Exd E	1,866	0.20 mi
Forestdale Dr	Caribou Rd NE	208	0.39 mi
Rock Hill Rd	Rock Hill PI E	7,113	0.39 mi
West Chapel Rd	Old Chapel Rd SW	1,273	0.49 mi
Forestdale Dr	Caribou Rd NE	213	0.49 mi
W Chapel Rd	Old Chapel Rd SW	1,298	0.52 mi
Hendersonville Rd	Forestdale Dr SE	27,266	0.53 mi



James Wilson
Commercial Broker

Main Office:
828.684.4344

Mobile:
828.768.7098

Email:
jwilson@pulliamproperties.com

EXPERIENCE MAKES THE DIFFERENCE

©2026 Pulliam Properties: All information regarding property for sale or lease is from sources deemed reliable, but no warranty or representation is made as to the accuracy thereof and the same is submitted subject to errors, omissions, prior sale or lease, change or withdrawal without notice. No liability of any kind is to be imposed on the broker herein.



PULLIAMPROPERTIES.COM

FOR LEASE
1257 Sweeten Creek Road
Asheville, NC 28803

contact: 828.768.7098 • jwilson@pulliamproperties.com



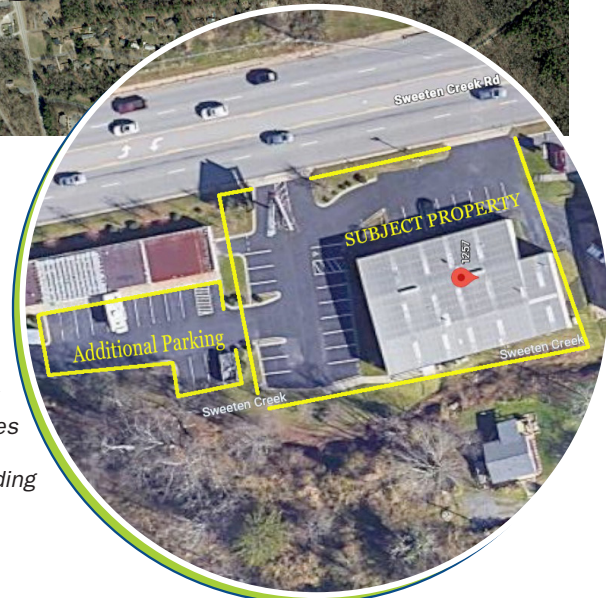
WESTERN NORTH CAROLINA'S TOP COMMERCIAL REAL ESTATE FIRM

SURROUNDINGS



MAP CREDIT: NOAA

SITE LOCATION



James Wilson
Commercial Broker

Main Office:
828.684.4344

Mobile:
828.768.7098

Email:
jwilson@pulliamproperties.com

*Additional 17
parking spaces
available at
auxillary building

EXPERIENCE MAKES THE DIFFERENCE

©2026 Pulliam Properties: All information regarding property for sale or lease is from sources deemed reliable, but no warranty or representation is made as to the accuracy thereof and the same is submitted subject to errors, omissions, prior sale or lease, change or withdrawal without notice. No liability of any kind is to be imposed on the broker herein.



PULLIAMPROPERTIES.COM