

Office Space  
for  
**LEASE**

1,128 sf

\$23.50/sf nnn

+ furnishing negotiable

+ Bulding: 4,089 SF

+ Zoning: R-P

+ Parking: 3.34 /1K

5 windsormere way  
ste. 200  
oviedo, fl 32765



**MOVE-IN  
READY**

buffy gillette  
broker associate  
(407) 734.7205  
buffy@BBDRE.com



Bishop Beale Duncan  
COMMERCIAL REAL ESTATE





## highlights

Located in a professional office & medical complex with multiple office buildings

- Great accessibility to Highways SR 417, SR 426 (W Broadway St, SR 434 (Alafaya Trail) , CR 419 (W Broadway St)
- Close proximity to Downtown Oviedo and OOTP restaurants
- 20 Minutes from Downtown Orlando
- 3 Minutes from Downtown Oviedo
- Parking ratio: 3.34 / 1,000 SF
- Small professional office complex, well maintained
- Kitchenette, 2 restrooms, and 4 cubicles



250 N. Orange Ave., Ste. 1500  
Orlando, FL 32801  
+ (407) 426.7702  
[www.BBDRE.com](http://www.BBDRE.com)

This offer is subject to errors, omissions, prior sale or withdrawal without notice.



for more information, contact buffy gillette • (407) 734.7205 • [buffy@BBDRE.com](mailto:buffy@BBDRE.com)





elevation



for more information, contact buffy gillette • (407) 734.7205 • [buffy@BBDRE.com](mailto:buffy@BBDRE.com)



move-in ready. furnishings negotiable.



entrance



conference



kitchenette



office 1

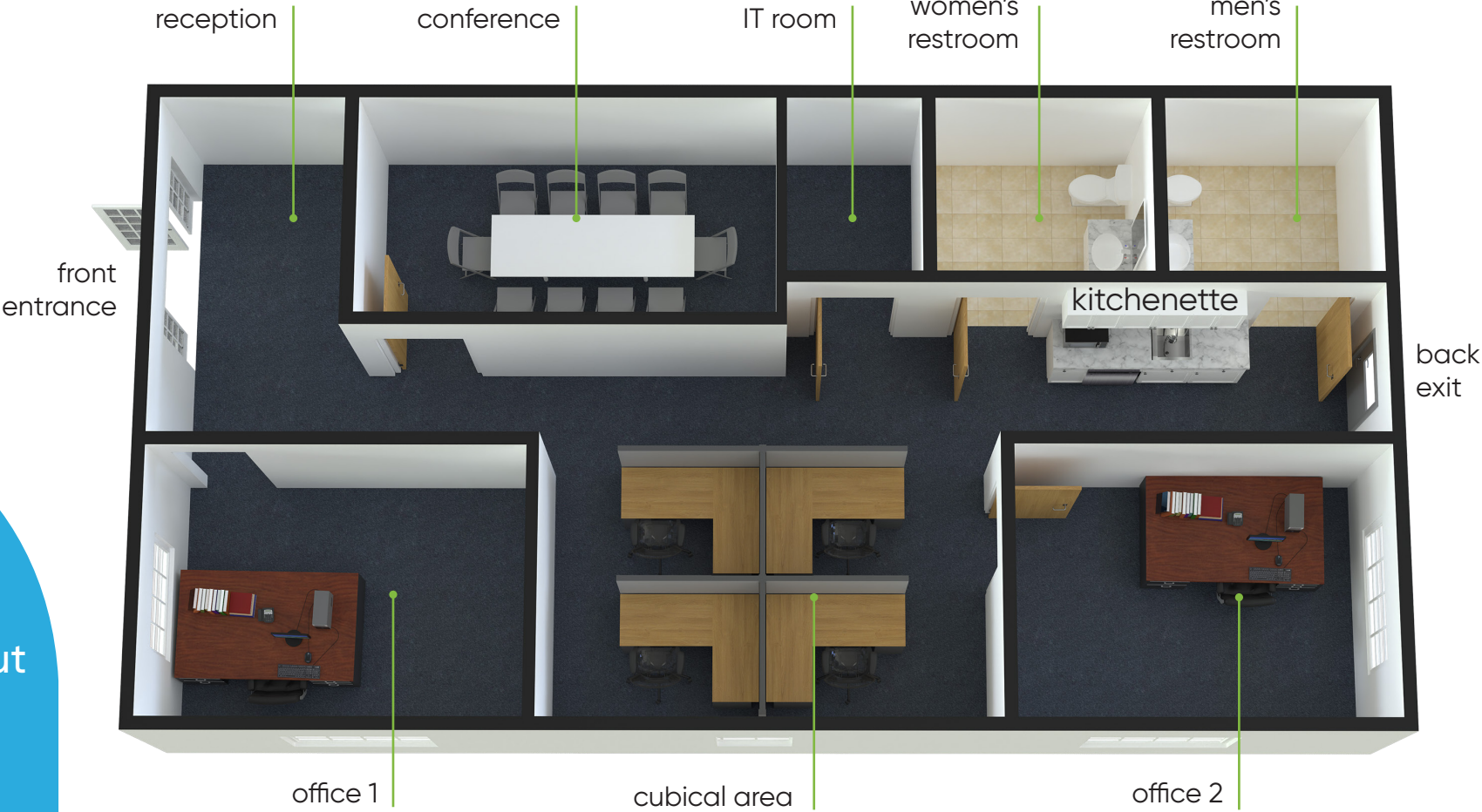
interiors



for more information, contact buffy gillette • (407) 734.7205 • [buffy@BBDRE.com](mailto:buffy@BBDRE.com)



suite 200 | 1,128 sf



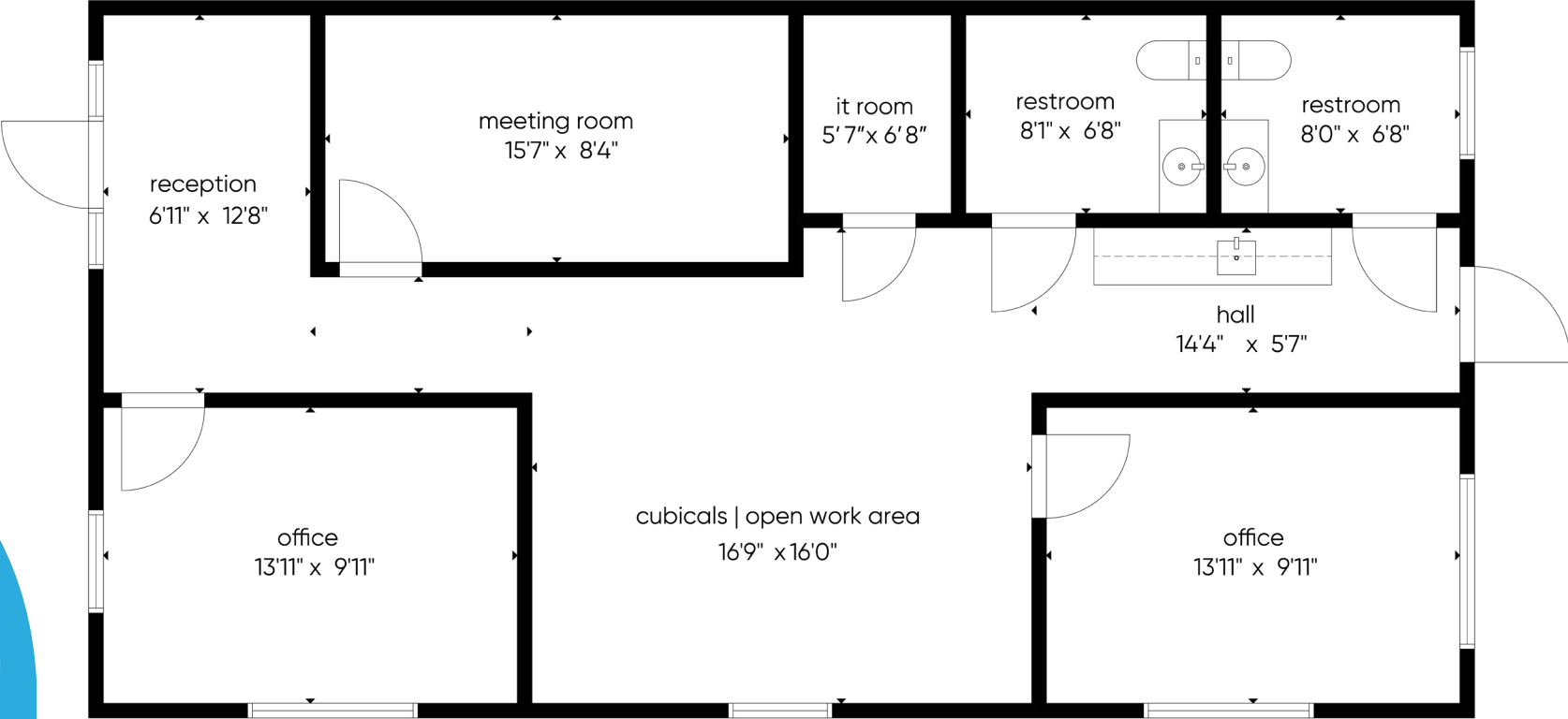
3d layout





suite 200 | 1,128 sf

FLOOR 1

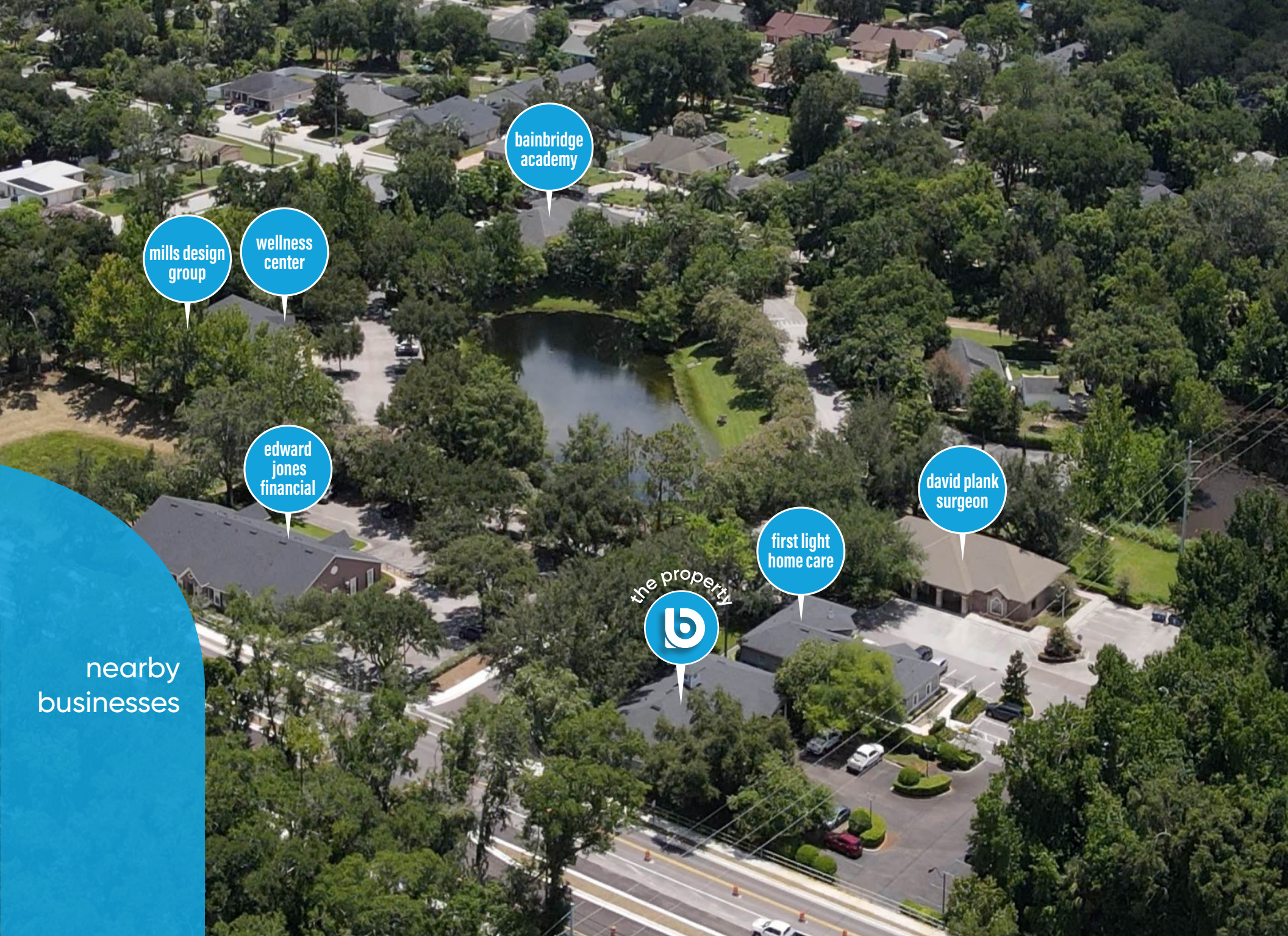


floor plan



for more information, contact buffy gillette • (407) 734.7205 • [buffy@BBDRE.com](mailto:buffy@BBDRE.com)





mills design group

wellness center

bainbridge academy

edward jones financial

the property  
**b**

first light home care

david plank surgeon

nearby businesses



for more information, contact buffy gillette • (407) 734.7205 • buffy@BBDRE.com





home depot

lowe's

downtown orlando

oviedo mall

oviedo medical center

new development

dwell oviedo

publix

dollar general

new development

oviedo high school

the property  
**b**

w broadway st

location  
aerial



for more information, contact buffy gillette • (407) 734.7205 • buffy@BBDRE.com





USPS

ace hardware

downtown oviedo

oviedo bowling

friendship park

lawton elementary

all about kidz preschool

the property  
**b**

oviedo on the park

ford's garage

food factory

LA fitness

location  
aerial  
n 



for more information, contact buffy gillette • (407) 734.7205 • buffy@BBDRE.com





location map



### demographics

Radius	Population	HH Income	Businesses	Employees
1-Mile	6,816	\$98,363	609	4,383
2-Mile	53,828	\$110,261	2,877	18,384
3-Mile	135,360	\$109,081	6,422	45,830



for more information, contact buffy gillette • (407) 734.7205 • buffy@BBDRE.com