

FOR LEASE | 2355 & 2377 GOLD MEADOW WAY, GOLD RIVER, CA 95670

BUSINESS CENTRAL CORPORATE CENTER | OFFICE SUITES AVAILABLE

Move In Ready Offices From 250 SF & Suites From 600 SF



Special Leasing Bonus Included!

For the next 90 days, earn \$1 per SF in your choice of gift cards (Costco, Nordstrom, etc) for every executed 24 month lease on any of our featured spaces!

DARCY WOODSON
dwoodson@businesscentral.net
916. 802. 8887



BUSINESS CENTRAL

The next generation of business environments

FOR LEASE | 2355 & 2377 GOLD MEADOW WAY, GOLD RIVER, CA 95670

BUSINESS CENTRAL CORPORATE CENTER | OFFICE SUITES AVAILABLE



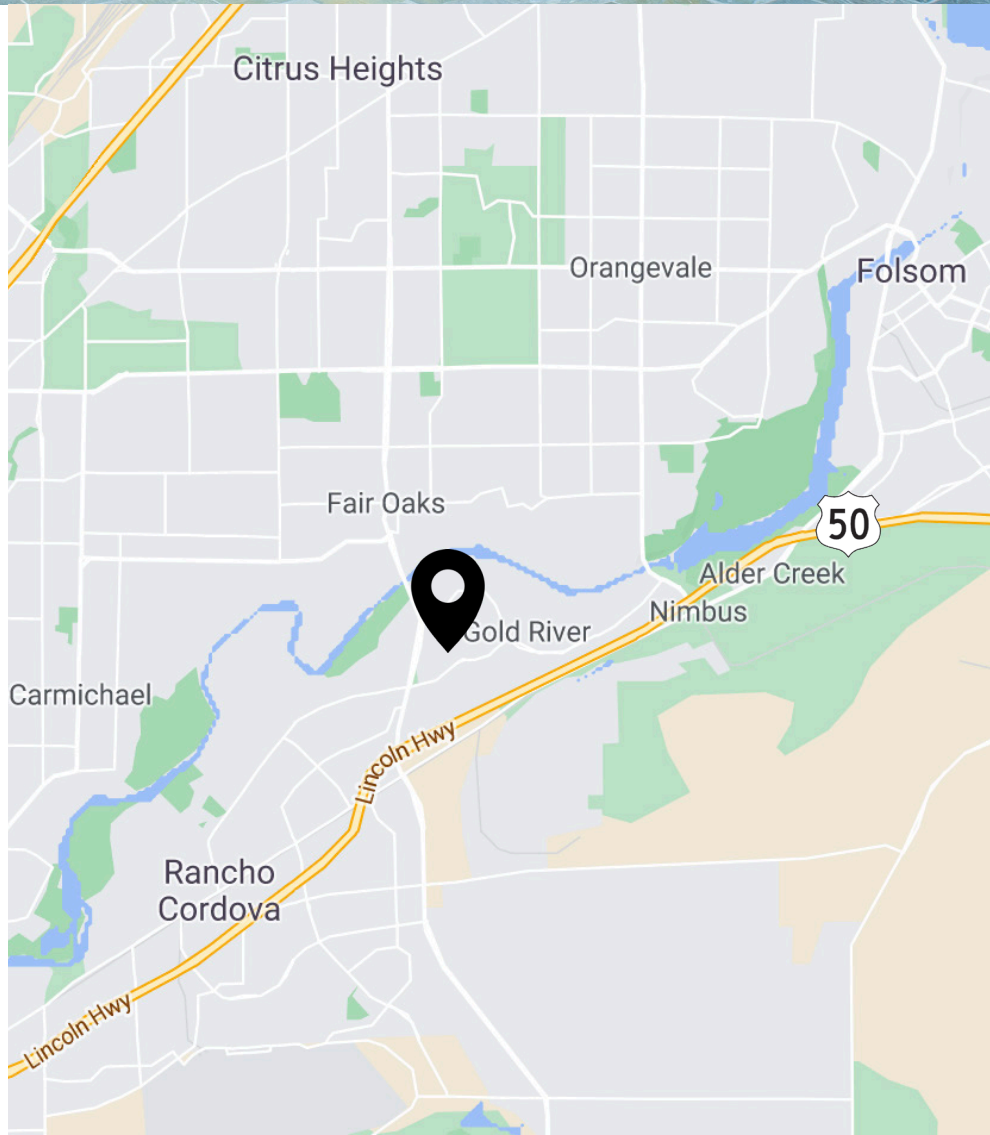
Lobby Interior

Property Overview

Business Central Corporate Center is five minutes from Highway 50 and an easy 20-minute car ride to downtown Sacramento. The buildings are in a prestigious office park surrounded by an upscale residential and commercial community. The Gold River community is comprised largely of a well-managed planned residential development in combination with retail, and commercial developments. It offers a very good variety of restaurants, shops and banks that are within walking distance of the Business Central buildings.

The Business Central Office Difference

- Move in ready single offices from 250 SF
- Move in ready suites from 600 SF
- Hospitality-driven environment
- Culture that motivates, connects and grows
- Entrepreneurial energy
- Collaborative & creative community
- Variety of office space sizes and configurations
- Flexible contract terms on scalable spaces and services
- Furnished or unfurnished
- From a one-person single office space to a 30-person contiguous office suite
- Perfect for local businesses, satellite and branch offices of regional and national company's



FOR LEASE | 2355 & 2377 GOLD MEADOW WAY, GOLD RIVER, CA 95670

BUSINESS CENTRAL CORPORATE CENTER | OFFICE SUITES AVAILABLE



Receptionist & Concierge



Coworking Spaces



Printing & Mailing Center

Shared Space Areas & Amenities

The centralized shared space in our buildings allows companies the luxury of leasing less space than they would need in traditional buildings. Due to the size of our properties and the economies of scale, the costs for this enhanced environment are minimized because they are shared by all the building Clients.

Shared Space:

- Impressive, grand and centralized reception area
- Service center with on-site support staff, equipment, and supplies
- Professional conference rooms which can accommodate 1 to 50 people
- Centralized, fully equipped and supplied mail room
- Copy/Print/Scan/Ship Center similar to FedEx Kinko centers
- Impressive lounges
- Fully equipped and supplied kitchen areas
- Café off the building lobby that will deliver food or drinks to your office
- Event Space for up to 200 people
- 24/7 HVAC data rooms
- Shower rooms with lockers (where applicable)

Business Central's clients also share many upscale amenities and services that are not found elsewhere. The atmosphere is upbeat and vibrant and makes it a great and productive place to work.



Weekly Continental Breakfast with Food & Beverage Delivery From Cafe to Your Office



Receptionist, Office Manager & Concierge Services



Mail Handling & Newspaper/Magazine Subscriptions



Security System & Services



Office Equipment & Supplies



Common Area Furnishings with Direct TV & Free Gold Tee Game Play

FOR LEASE | 2355 & 2377 GOLD MEADOW WAY, GOLD RIVER, CA 95670

BUSINESS CENTRAL CORPORATE CENTER | OFFICE SUITES AVAILABLE



Office Space



Shared Conference Rooms



Outdoor Workspace



Shared Amenities Area

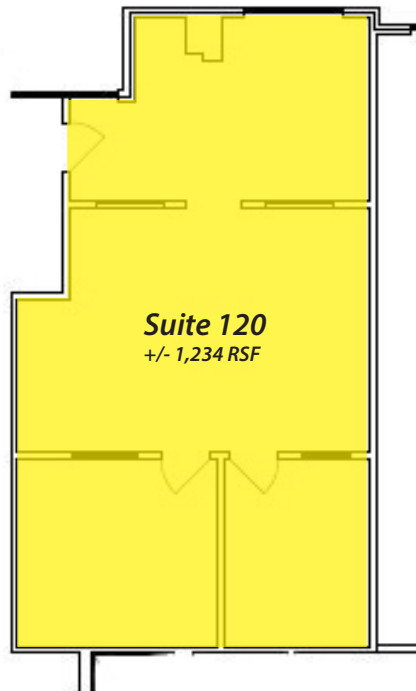
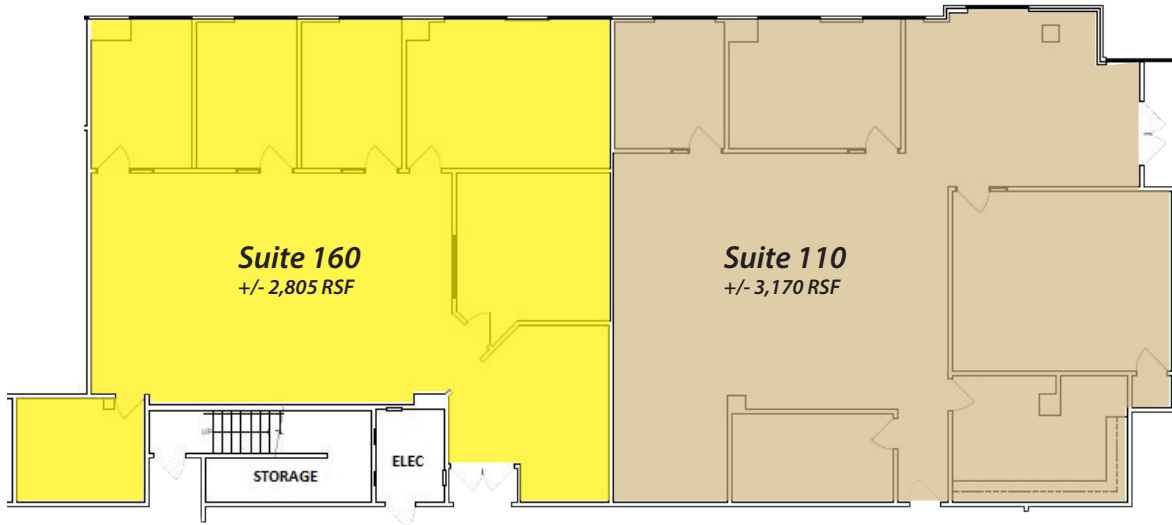
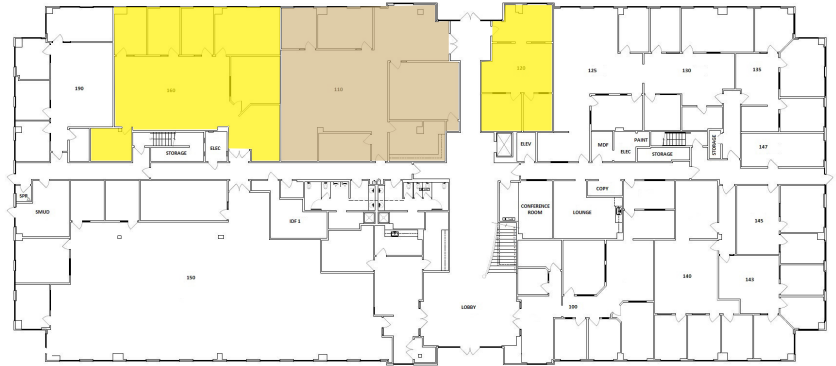
FOR LEASE | 2355 & 2377 GOLD MEADOW WAY, GOLD RIVER, CA 95670

BUSINESS CENTRAL CORPORATE CENTER | OFFICE SUITES AVAILABLE

2355 Gold Meadow Way | Floor Plans

First Floor

- Suite 160 = +/- 2,805 RSF
 - Suite 110 = +/- 3,170 RSF
 - Suite 120 = +/- 1,234 RSF
- +/- 5,975 Contiguous



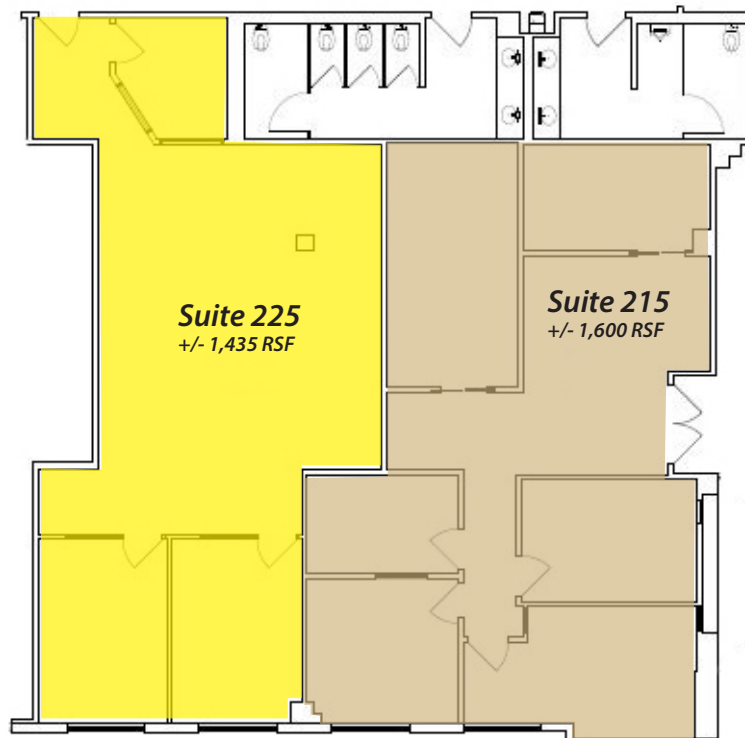
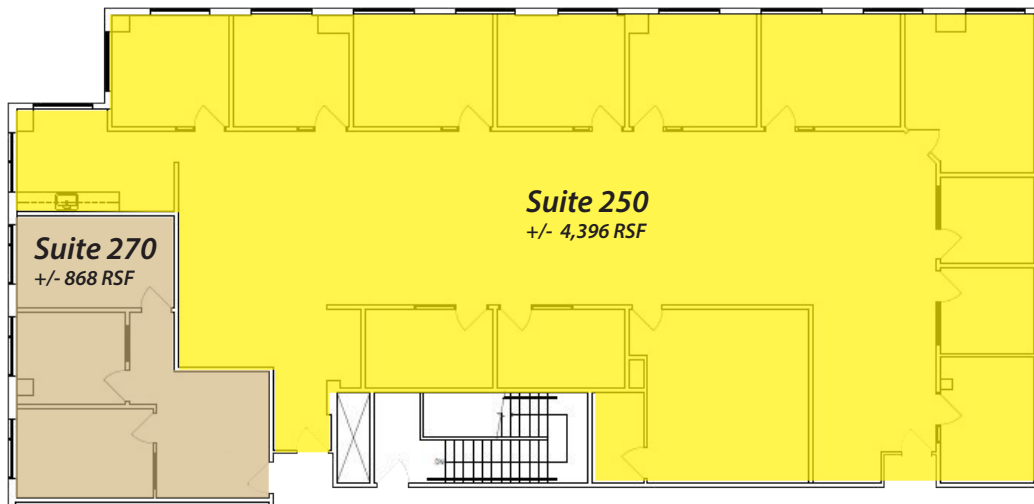
FOR LEASE | 2355 & 2377 GOLD MEADOW WAY, GOLD RIVER, CA 95670

BUSINESS CENTRAL CORPORATE CENTER | OFFICE SUITES AVAILABLE

2355 Gold Meadow Way | Floor Plans

Second Floor

- Suite 215 = +/- 1,600 RSF
 - Suite 225 = +/- 1,435 RSF
 - Suite 250 = +/- 4,396 RSF
 - Suite 270 = +/- 868 RSF
- +/- 3,035 SF Contiguous
- +/- 5,264 SF Contiguous



FOR LEASE | 2355 & 2377 GOLD MEADOW WAY, GOLD RIVER, CA 95670

BUSINESS CENTRAL CORPORATE CENTER | OFFICE SUITES AVAILABLE

2377 Gold Meadow Way | Floor Plans

First Floor



Second Floor



FOR LEASE | 2355 & 2377 GOLD MEADOW WAY, GOLD RIVER, CA 95670

BUSINESS CENTRAL CORPORATE CENTER | OFFICE SUITES AVAILABLE



DARCY WOODSON
dwoodson@businesscentral.net
916.802.8887



BUSINESS CENTRAL
The next generation of business environments