



FOR SUBLEASE/SALE

INDUSTRIAL PROPERTY



130 Harvest Rd.
Bluffton, IN 46714

85,588 Sq. Ft. Industrial Building Available Immediately

About The Property

- Ceiling height 18' to 28'
- Four loading docks
- Expandable on 10.72 acres
- Heavy power
- Sublease rate: \$3.00 SF/yr., NNN
- Sale Price: \$3,400,000 (\$39.73/sf)



STEVE ZACHER SIOR CCIM
President, Managing Broker
szacher@zacherco.com
260.422.8474

JOHN ADAMS CCIM
Senior Broker
jadams@zacherco.com
260.422.8474 x209

444 E. MAIN STREET, SUITE 203, FORT WAYNE, IN 46802 • WWW.ZACHERCO.COM

The information contained herein was obtained from sources we consider to be reliable. We cannot be responsible, however, for errors, omissions, prior sale, withdrawal from the market or change in price. We make no representation as to the environmental or structural condition of the property and recommend independent investigation by all parties.

PROPERTY INFORMATION

85,588 SQ. FT. INDUSTRIAL BUILDING AVAILABLE IMMEDIATELY

BUILDING SIZE/LOCATION/ZONING

Total Building Size	85,588 SF
Office	1,588 SF
Street Address	130 Harvest Rd.
City, State, Zip	Bluffton, IN 46714
County/Township	Wells/Harrison
City Limits	Inside
Zoning	I1/Limited Industrial
Site Acreage	10.72 Acres

PRICE/AVAILABILITY

Sale Price	\$3,400,000
Sublease Rate	\$3.00 SF/yr. (NNN)
Master Lease Expires	4/30/34
Availability	Immediately

FINANCIAL RESPONSIBILITIES

Utilities	Tenant
Property Taxes, Insurance & CAM	Tenant
Non Structural Maintenance	Tenant
Roof & Structure	Landlord

BUILDING DATA

Construction Dates	1975/1990 & 1998
Type of Construction	Pre-engineered Steel
	4' Concrete Wainscot
Roof	Metal with Membrane Overlay
Floor	8" Concrete
Ceiling Height	18' to 28'
Dimensions	240' x 350'
Bay Spacing	35' x 44'
Sprinklers	Conventional Wet System
Heat	Suspended Gas Units
Air Conditioning	Office Only
Lighting	Energy Efficient Fluorescent
	Some With Motion Sensors
Restrooms	2 Sets (1 Office, 1 Warehouse)
Other:	Break Room in Plant
	Compressed Air Lines Throughout -
	Compressor Removed

OPERATING COSTS

Taxes (2024 pay 2025)	\$38,485.64 (\$0.44/sf)
Insurance	\$11,000.00 (\$0.13/sf)
Total	\$0.57/sf

PARKING/TRANSPORTATION

Parking Lot/Spaces	Asphalt/62
Major Road Nearest Site	State Road 1
Distance to Interstate	14 Miles to I-69

UTILITIES

Electric	City of Bluffton
	4-2,500KVA 277/480
	1-1,500KVA 277/480
	1-167KVA 120/240
	Some Buss Duct Distribution
Gas	NIPSCO
Water/Sewer	City of Bluffton
Internet	High Speed up to 1 Gig

LOADING FACILITIES

Dock Doors	Four - 10' x 10'
Drive-in Doors	Two - 8' x 10' & 12' x 14'



STEVE ZACHER SIOR CCIM
President, Managing Broker
szacher@zacherco.com
260.422.8474

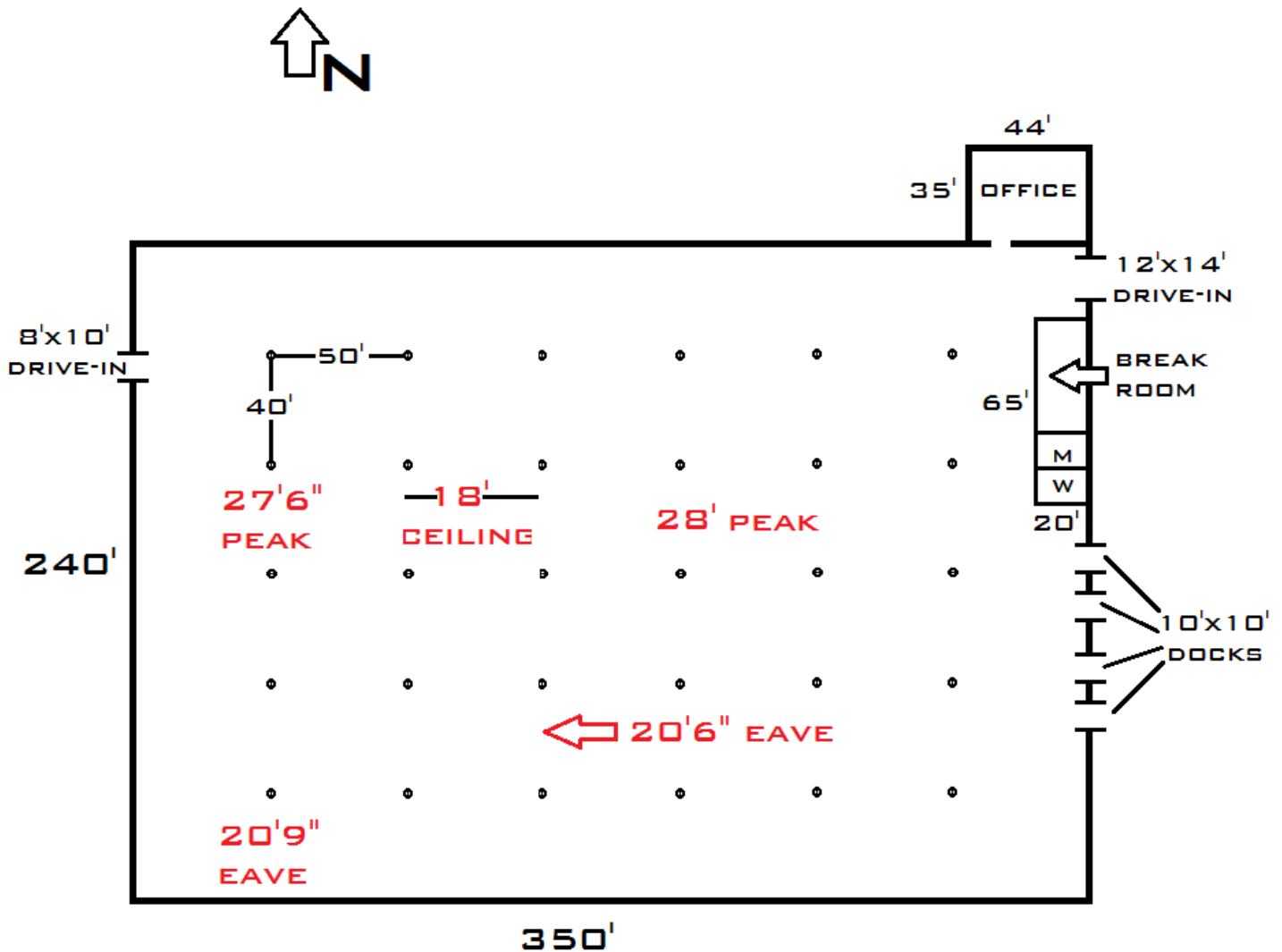
JOHN ADAMS CCIM
Senior Broker
jadams@zacherco.com
260.422.8474 x209



The information contained herein was obtained from sources we consider to be reliable. We cannot be responsible, however, for errors, omissions, prior sale, withdrawal from the market or change in price. We make no representation as to the environmental or structural condition of the property and recommend independent investigation by all parties.

FLOOR PLAN

85,588 SQ. FT. INDUSTRIAL BUILDING AVAILABLE IMMEDIATELY



STEVE ZACHER SIOR CCIM
President, Managing Broker
szacher@zacherco.com
260.422.8474

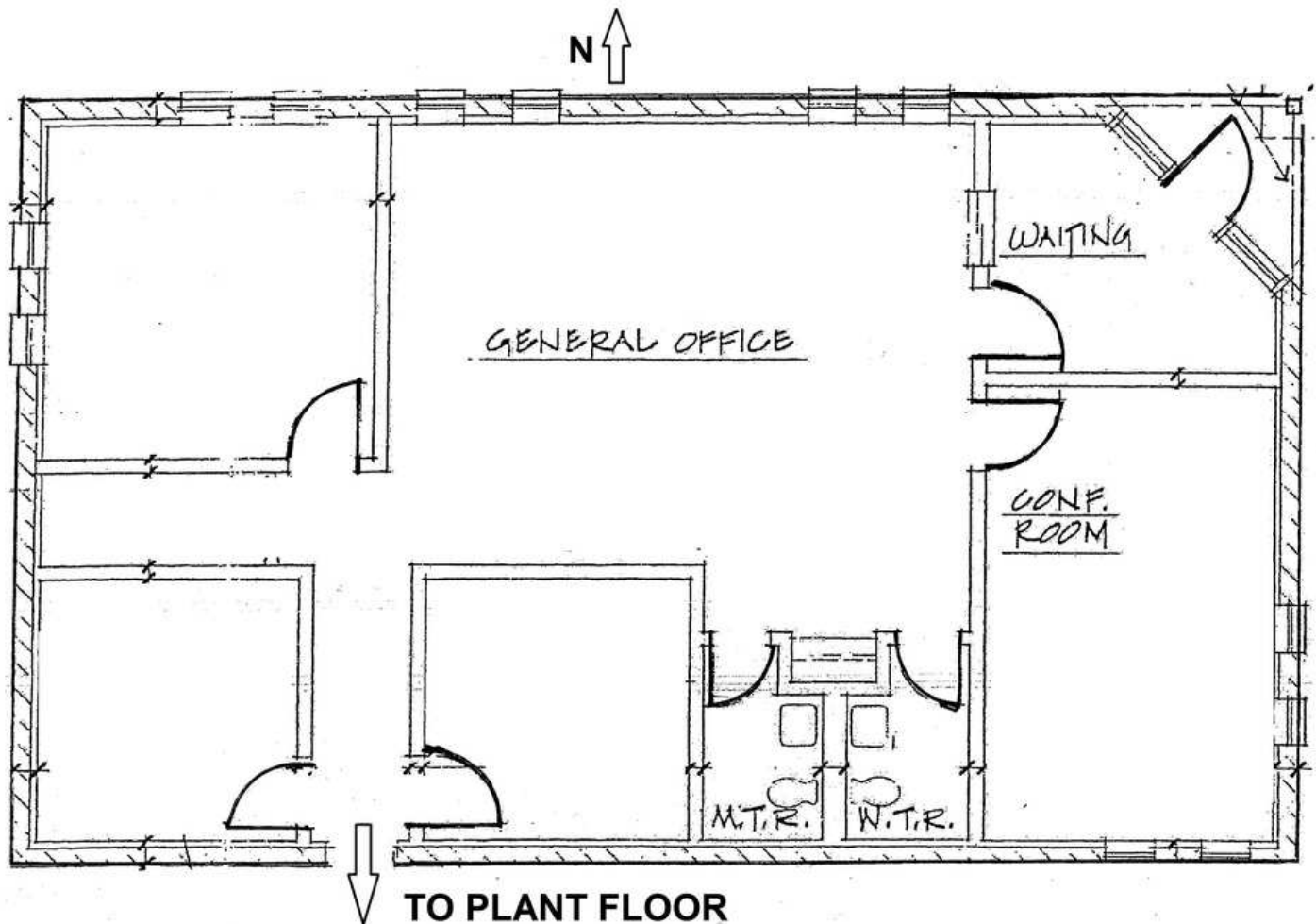
JOHN ADAMS CCIM
Senior Broker
jadams@zacherco.com
260.422.8474 x209



The information contained herein was obtained from sources we consider to be reliable. We cannot be responsible, however, for errors, omissions, prior sale, withdrawal from the market or change in price. We make no representation as to the environmental or structural condition of the property and recommend independent investigation by all parties.

OFFICE FLOOR PLAN

85,588 SQ. FT. INDUSTRIAL BUILDING AVAILABLE IMMEDIATELY



STEVE ZACHER SIOR CCIM
President, Managing Broker
szacher@zacherco.com
260.422.8474

JOHN ADAMS CCIM
Senior Broker
jadams@zacherco.com
260.422.8474 x209



The information contained herein was obtained from sources we consider to be reliable. We cannot be responsible, however, for errors, omissions, prior sale, withdrawal from the market or change in price. We make no representation as to the environmental or structural condition of the property and recommend independent investigation by all parties.

ADDITIONAL PHOTOS

85,588 SQ. FT. INDUSTRIAL BUILDING AVAILABLE IMMEDIATELY



STEVE ZACHER SIOR CCIM
President, Managing Broker
szacher@zacherco.com
260.422.8474

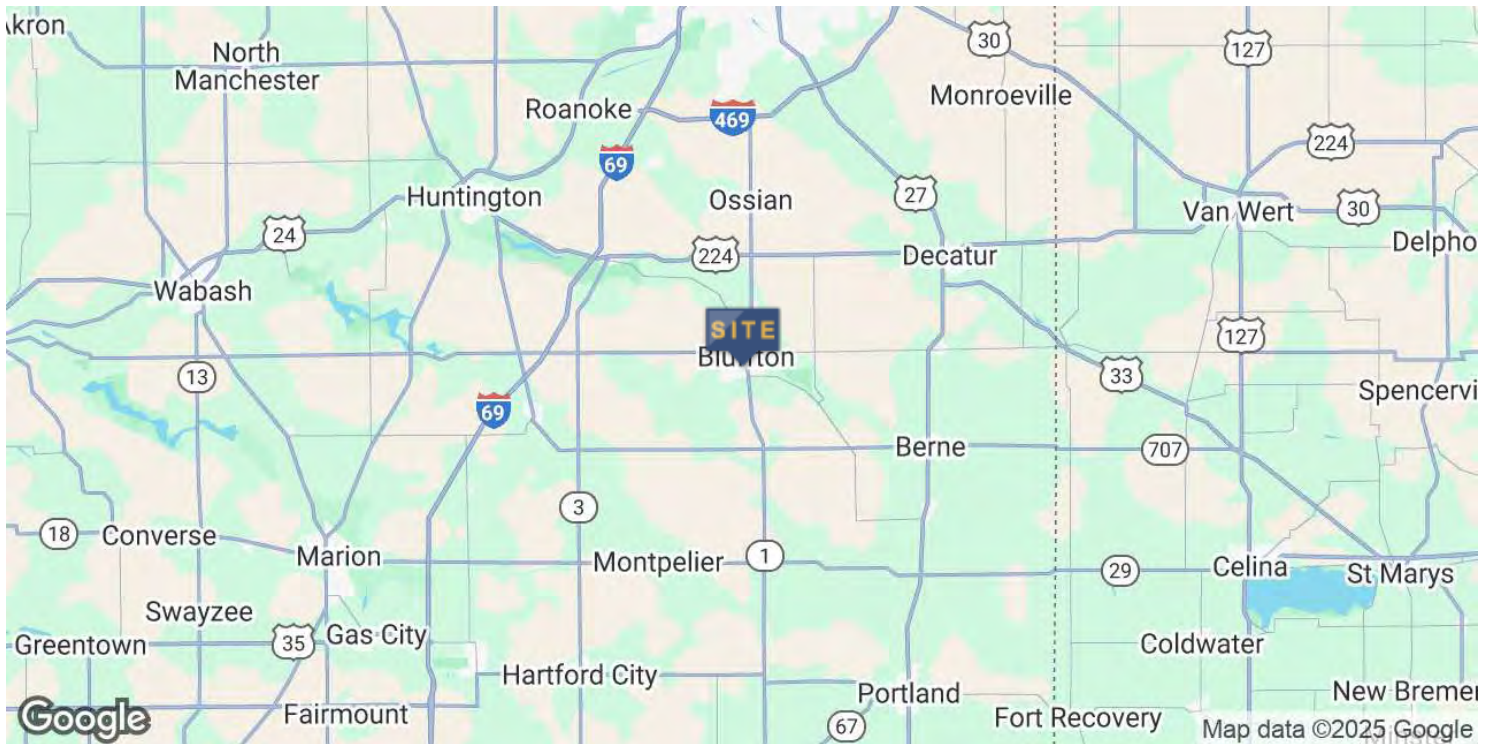
JOHN ADAMS CCIM
Senior Broker
jadams@zacherco.com
260.422.8474 x209



The information contained herein was obtained from sources we consider to be reliable. We cannot be responsible, however, for errors, omissions, prior sale, withdrawal from the market or change in price. We make no representation as to the environmental or structural condition of the property and recommend independent investigation by all parties.

LOCATION MAP

85,588 SQ. FT. INDUSTRIAL BUILDING AVAILABLE IMMEDIATELY



STEVE ZACHER SIOR CCIM
President, Managing Broker
szacher@zacherco.com
260.422.8474

JOHN ADAMS CCIM
Senior Broker
jadams@zacherco.com
260.422.8474 x209



The information contained herein was obtained from sources we consider to be reliable. We cannot be responsible, however, for errors, omissions, prior sale, withdrawal from the market or change in price. We make no representation as to the environmental or structural condition of the property and recommend independent investigation by all parties.

DRIVING DISTANCE MAP

85,588 SQ. FT. INDUSTRIAL BUILDING AVAILABLE IMMEDIATELY



DISTANCE FROM BLUFFTON, INDIANA, TO MAJOR CITIES

Fort Wayne	25 miles
Indianapolis	109 miles
Toledo	123 miles
Columbus	145 miles

Cincinnati	169 miles
Chicago	178 miles
Detroit	183 miles
Grand Rapids	206 miles



STEVE ZACHER SIOR CCIM
President, Managing Broker
szacher@zacherco.com
260.422.8474

JOHN ADAMS CCIM
Senior Broker
jadams@zacherco.com
260.422.8474 x209



The information contained herein was obtained from sources we consider to be reliable. We cannot be responsible, however, for errors, omissions, prior sale, withdrawal from the market or change in price. We make no representation as to the environmental or structural condition of the property and recommend independent investigation by all parties.