

FOR SALE
701 W LANDSTREET ROAD
ORLANDO, FL 32824

LEE & ASSOCIATES
COMMERCIAL REAL ESTATE SERVICES



W Landstreet Road | AADT: 28,000

PROPERTY HIGHLIGHTS

- Total Size: 62,418 SF
- Clear Height: 22'
- Doors: Seven (7) loading doors, four (4) drive-in doors
- Zoning: IND-2/IND-3
- Use: manufacturing, distribution, showroom, etc

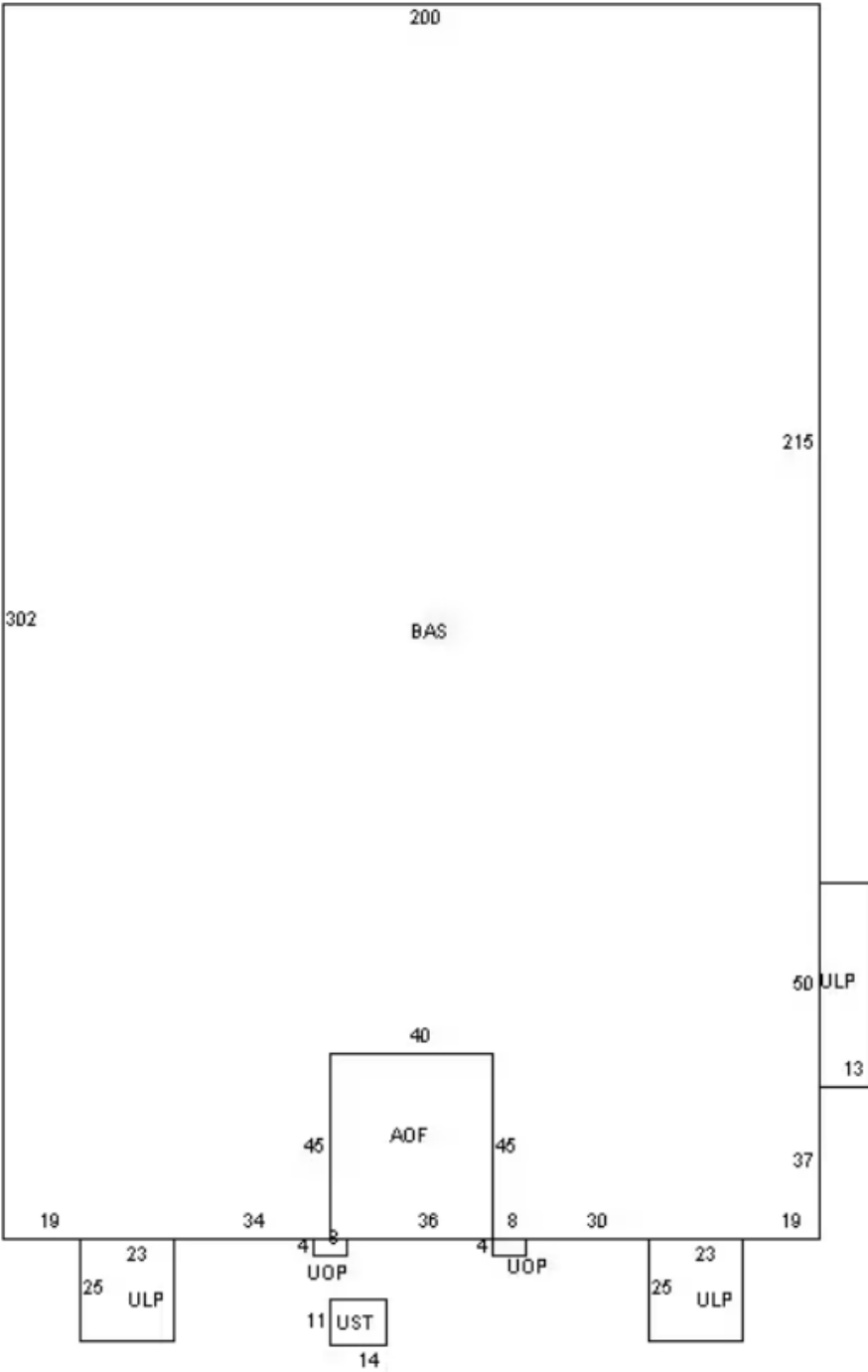
ASKING PRICE:
CALL BROKER FOR INFO

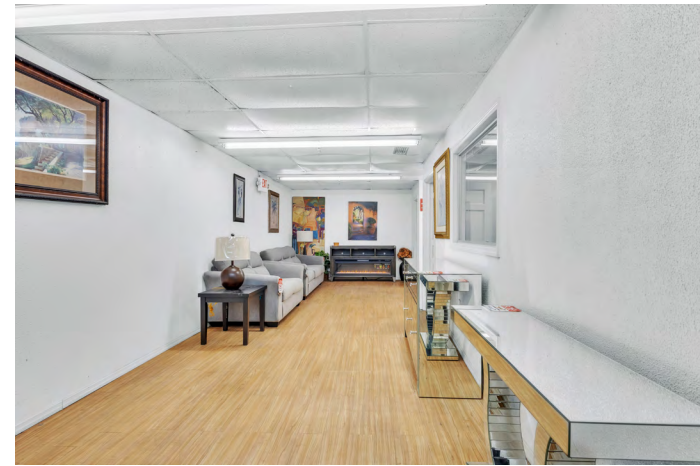
Contact:

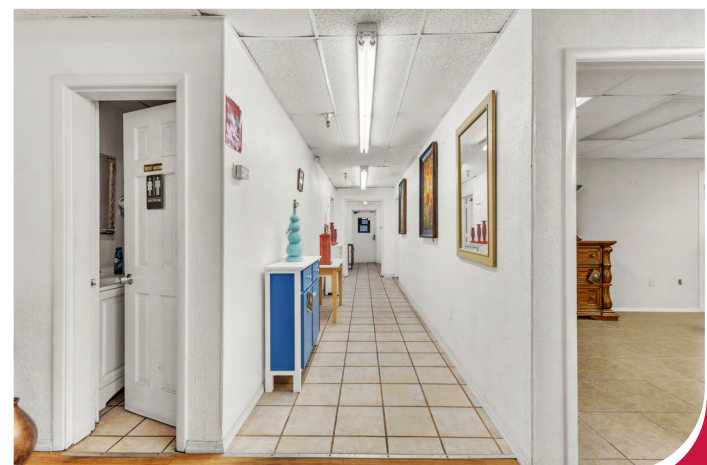
Christopher "CJ" Griffith, SIOR
Vice President
cgriffith@lee-associates.com
D 321.281.8508

Ryan Griffith
Vice President
rgriffith@lee-associates.com
D 321.281.8512

All information furnished regarding property for sale, rental or financing is from sources deemed reliable, but no warranty or representation is made to the accuracy thereof and same is submitted to errors, omissions, change of price, rental or other conditions prior to sale, lease or financing or withdrawal without notice. No liability of any kind is to be imposed on the broker herein.



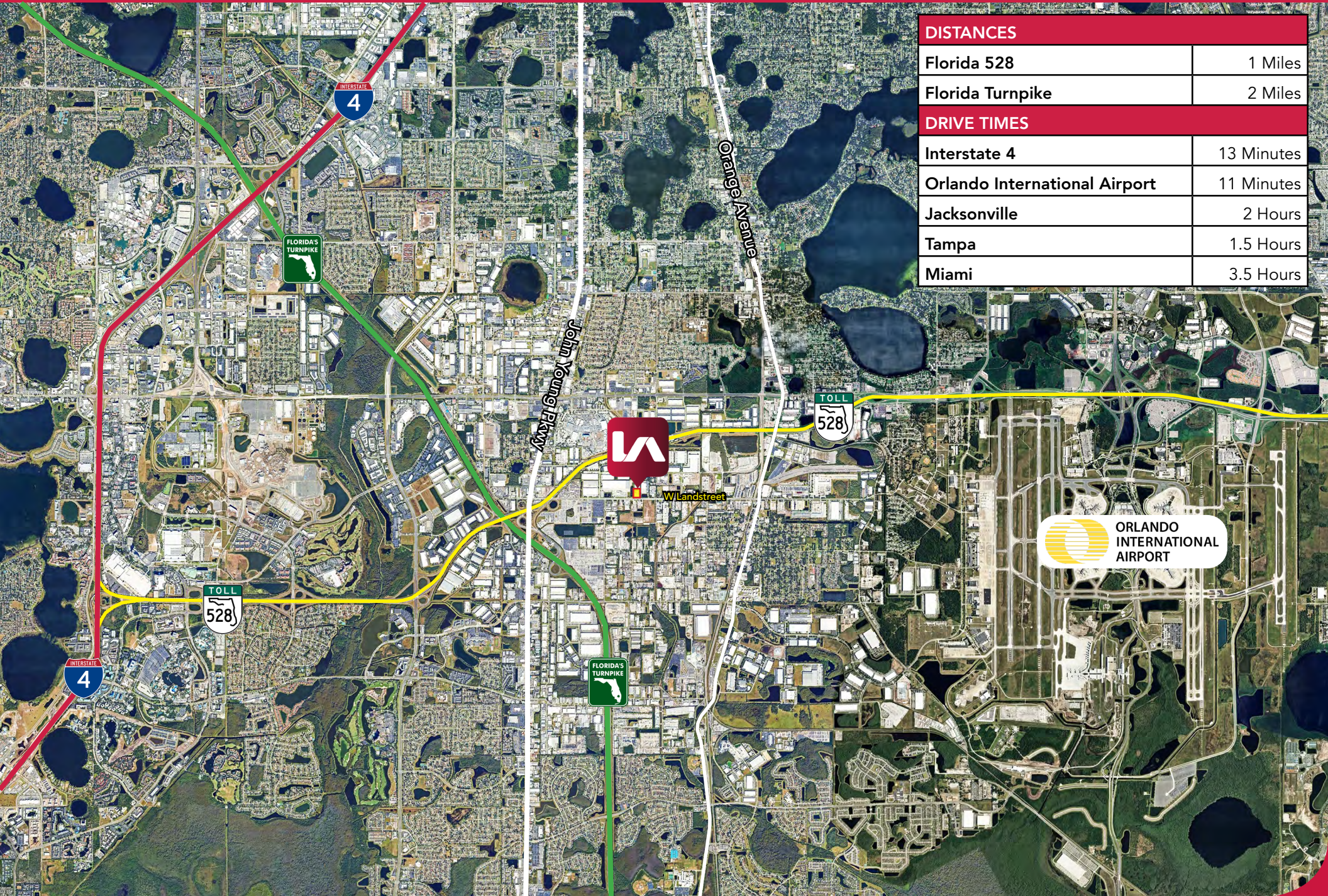






LOCATION

701 W LANDSTREET ROAD, ORLANDO, FL 32824



DISTANCES

Florida 528	1 Miles
Florida Turnpike	2 Miles

DRIVE TIMES

Interstate 4	13 Minutes
Orlando International Airport	11 Minutes
Jacksonville	2 Hours
Tampa	1.5 Hours
Miami	3.5 Hours

