

OFFICE OR REDEVELOPMENT OPPORTUNITY - 8200 Travis, Overland Park, KS 66204



- ❑ 1,038 SF house on .34 acre
- ❑ Great restaurants nearby: Maloney's Sports Bar and Grill, Peanut on Santa Fe, Lemongrass Thai Food, The Other Place Bar and Grill, Mi Ranchito, Torreador, Homer's Coffee House, Mr. Brews Tap House, Mr. Gyros, Strang Hall, the Edison District, Brew Lab, Buffalo State Pizza, Upper Crust, Clock Tower Bakery, Jimmy Johns.
- ❑ Walking distance to apartments (The Vue, Avenue 80, Avenue 81, Urban lofts, 79 Metcalf Apartments, Market Lofts, Park Apartments, Santa Fe Office Tower Apartments, Townhomes at Buckley Court)



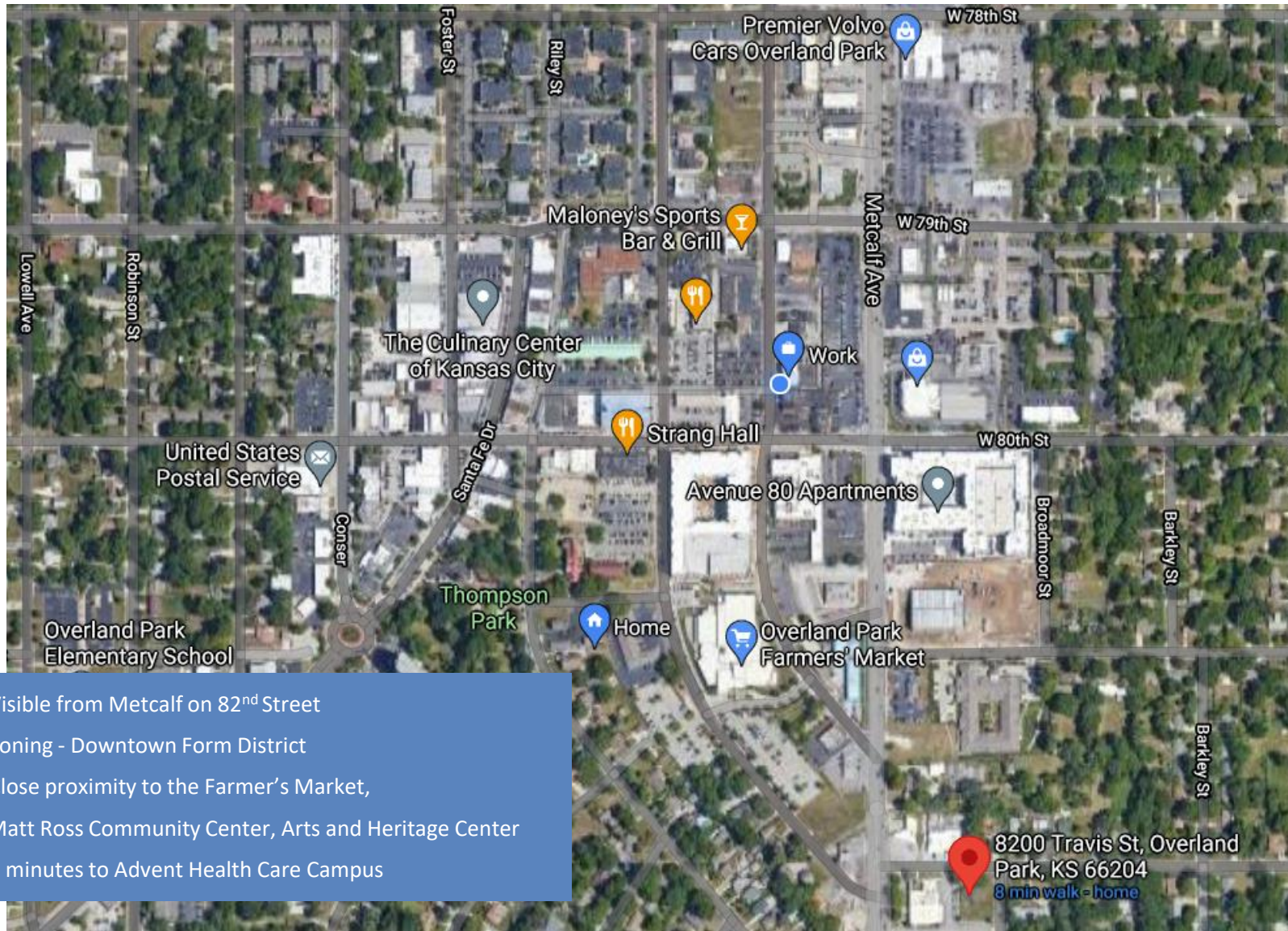
Located behind Overland Park Chapel

FOR SALE: \$525,000

Jill S. Bergthold, CCIM
913.782.9000 O 913.961.0600 C



OFFICE OR REDEVELOPMENT OPPORTUNITY - 8200 Travis, Overland Park, KS 66204

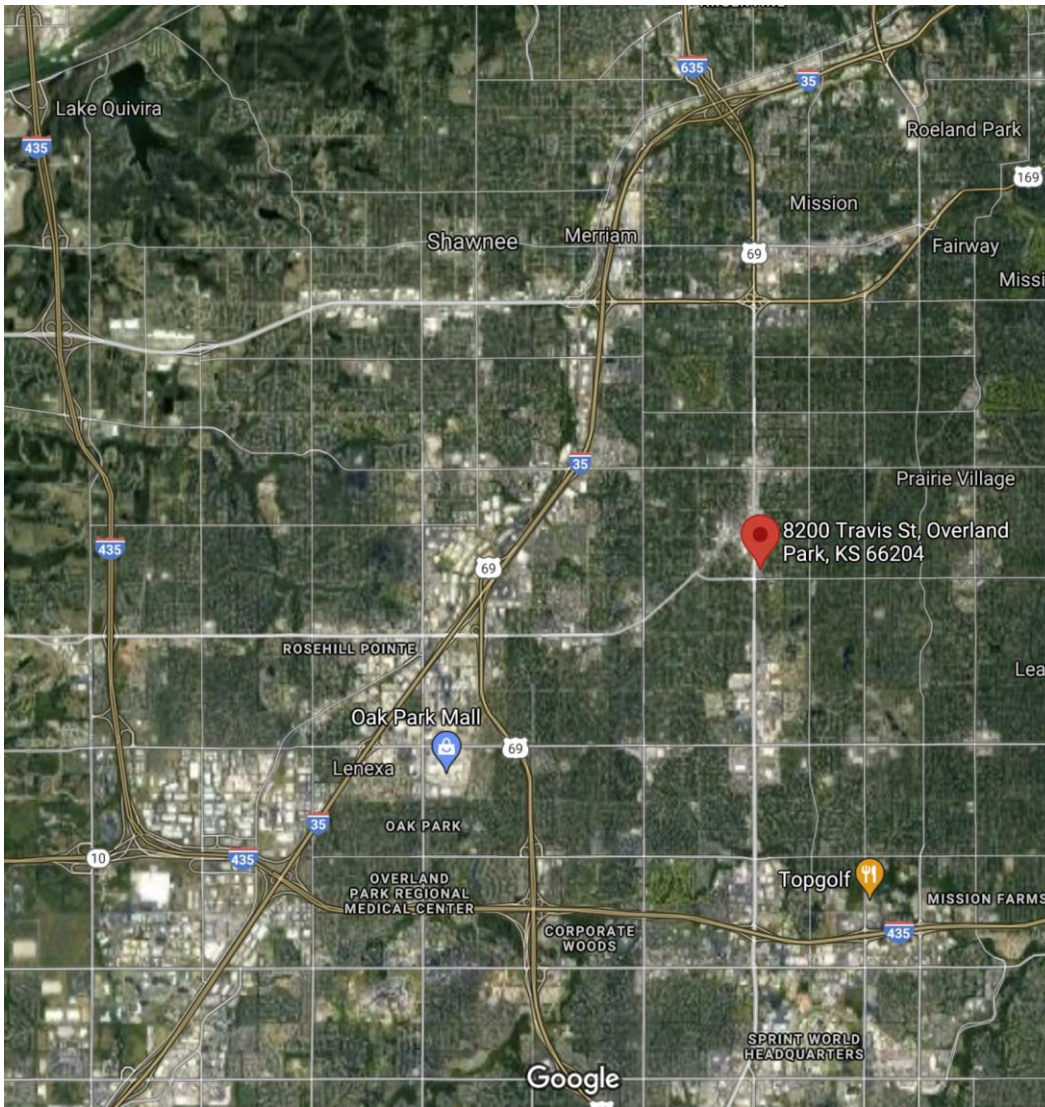


Jill S. Bergthold, CCIM

913.782.9000 O 913.961.0600 C



OFFICE OR REDEVELOPMENT OPPORTUNITY - 8200 Travis, Overland Park, KS 66204



Close Proximity to Major Intersections:

82 ND & METCALF		32,050 CPD
75 TH & I-35	9 MIN	146,000 CPD
87 TH & I-35	10 MIN	103,000 CPD
I-435 & METCALF	7 MIN	79,900 CPD
METCALF & SMP	9 MIN	37,500 CPD
I-35 & METCALF	11 MIN	135,000 CPD

Jill S. Berghold, CCIM
913.782.9000 O 913.961.0600 C



OFFICE OR REDEVELOPMENT OPPORTUNITY - 8200 Travis, Overland Park, KS 66204

2021 DEMOGRAPHICS

1 MILE

KEY FACTS

14,468

Population



2.0

Average Household Size

41.1

Median Age

\$54,584

Median Household Income

BUSINESS



587

Total Businesses



6,816

Total Employees

INCOME



\$54,584

Median Household Income



\$35,531

Per Capita Income



\$58,121

Median Net Worth

EDUCATION

8%

No High School Diploma



14%

High School Graduate



27%

Some College



51%

Bachelor's/Grad/Pr of Degree

EMPLOYMENT



White Collar

70%



Blue Collar

14%



Services

16%

11.3%

Unemployment Rate

Households By Income

The largest group: \$50,000 - \$74,999 (21.2%)

The smallest group: \$200,000+ (4%)

Indicator ▲	Value	Diff	
<\$15,000	11.4%	+6%	
\$15,000 - \$24,999	8.6%	+3.9%	
\$25,000 - \$34,999	10.2%	+3.9%	
\$35,000 - \$49,999	14.3%	+5.1%	
\$50,000 - \$74,999	21.2%	+5.3%	
\$75,000 - \$99,999	13.2%	-1%	
\$100,000 - \$149,999	12.4%	-7%	
\$150,000 - \$199,999	4.7%	-6.9%	
\$200,000+	4%	-9.3%	

Bars show deviation from Johnson County

3 MILES

KEY FACTS

103,571

Population



2.2

Average Household Size

40.7

Median Age

\$68,947

Median Household Income

BUSINESS



4,800

Total Businesses



68,848

Total Employees

INCOME



\$68,947

Median Household Income



\$43,315

Per Capita Income



\$142,973

Median Net Worth

EDUCATION

4%

No High School Diploma



14%

High School Graduate



27%

Some College



54%

Bachelor's/Grad/Pr of Degree

EMPLOYMENT



White Collar

76%



Blue Collar

12%



Services

13%

11.6%

Unemployment Rate

Households By Income

The largest group: \$50,000 - \$74,999 (20.8%)

The smallest group: \$15,000 - \$24,999 (6%)

Indicator ▲	Value	Diff	
<\$15,000	7%	+1.6%	
\$15,000 - \$24,999	6%	+1.3%	
\$25,000 - \$34,999	8.5%	+2.2%	
\$35,000 - \$49,999	11.3%	+2.1%	
\$50,000 - \$74,999	20.8%	+4.9%	
\$75,000 - \$99,999	14.6%	+0.4%	
\$100,000 - \$149,999	16.3%	-3.1%	
\$150,000 - \$199,999	7.5%	-4.1%	
\$200,000+	7.8%	-5.5%	

Bars show deviation from Johnson County

Jill S. Bergthold, CCIM

913.782.9000 O 913.961.0600 C

