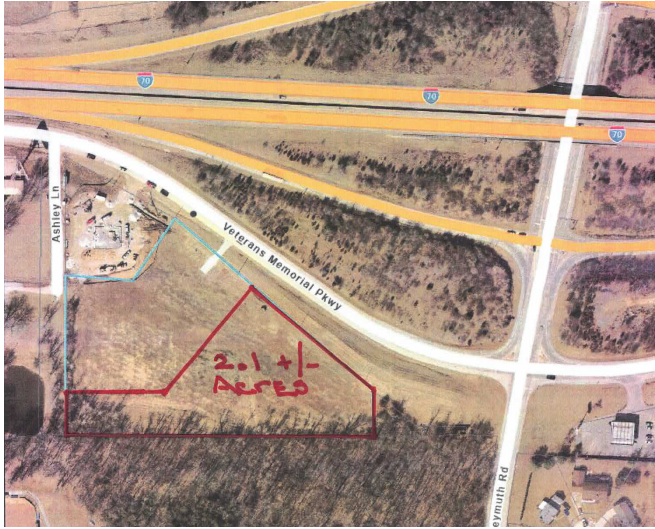


BUILD TO SUIT

12350 Veterans Memorial Parkway, Wentzville, MO 63385



Land

- 2.1 acres +/- tract of land
- All utilities on site along with detention and entrance
- The new Fabick Cat facility and the new Alliance Credit Union location adjoins this property to the west.
- Excellent visibility with high traffic counts
- Developer will build to suit
- **Starting at \$18.00 psf NNN**

Directions: From St. Charles, take I-70 west to exit 212 toward MO-A. Turn left onto E Route A. Continue on Freymuth Road. Turn right onto Veterans Memorial Parkway.

For More Information Contact:

Doug Tinkham

(M) (636) 262-5978

(O) (636) 946-9753

(E) tinkham@shockleycommercial.com

www.shockleycommercial.com

501 First Capitol Drive, Suite 5

St. Charles, MO 63301



No expressed or implied warranty or representation is made as to the accuracy of the information contained herein. This property is submitted subject to errors, omissions, change of price, withdrawal without notice, prior lease or sale and other listing conditions imposed by the principals.