



468 SF  
OFFICE SPACE

**NAI**Commercial

Suite 601 - 1080 Howe Street | Vancouver, BC

## FOR LEASE

### Downtown Vancouver Executive Place Tower

Opportunity to lease 468 SF of fully-improved, premier office space in the heart of downtown Vancouver. Centrally situated at Howe and Helmcken, this building is within close proximity to public transportation, trendy restaurants and is within walking distance to all points on the downtown peninsula.



# Suite 601

## 1080 Howe Street

Vancouver, BC

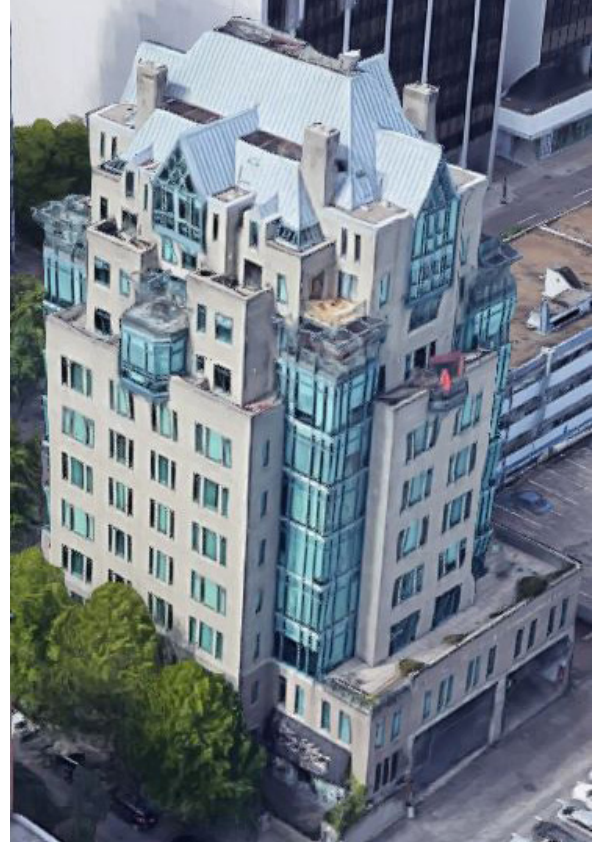
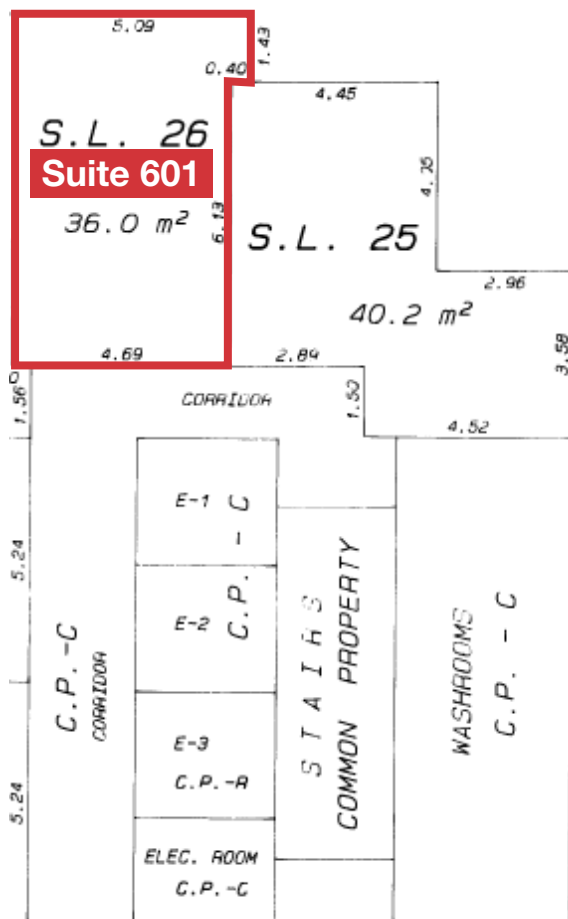
### Unit Description

The premises is all open plan and faces west.

### Highlights

- ▶ Fully-improved space
- ▶ Underground parking
- ▶ Gym, showers, kitchen and common boardroom
- ▶ Double glass door entry to the building
- ▶ Open area with lots of natural light
- ▶ New vinyl plank flooring
- ▶ New paint

### Floor Plan



### Property Details

#### Size

468 SF

#### Base Rent

\$25.00/SF

#### Operating Cost & Property Taxes

\$21.50/SF (2025)

#### Estimated Monthly Rent

\$1,813 plus GST

Brian Mackenzie

Vice President, Leasing & Sales

604 691 6618

[bmackenzie@naicommercial.ca](mailto:bmackenzie@naicommercial.ca)



