



FOR LEASE
251 W WYLIE AVE

132,455 SF
WASHINGTON, PA

LUKE HERDER 414-244-9574 | LHERDER@PHOENIXINVESTORS.COM

ANTHONY CRIVELLO 414-982-4810 | ANTHONY@PHOENIXINVESTORS.COM

This document has been prepared by Phoenix Investors for advertising and general information only. Phoenix Investors makes no guarantees, representations, or warranties of any kind, expressed or implied, regarding the information including, but not limited to, warranties of content, accuracy, and reliability.



PHOENIX
INVESTORS

Opportunity. Execution. Value Creation.



PROPERTY HIGHLIGHTS



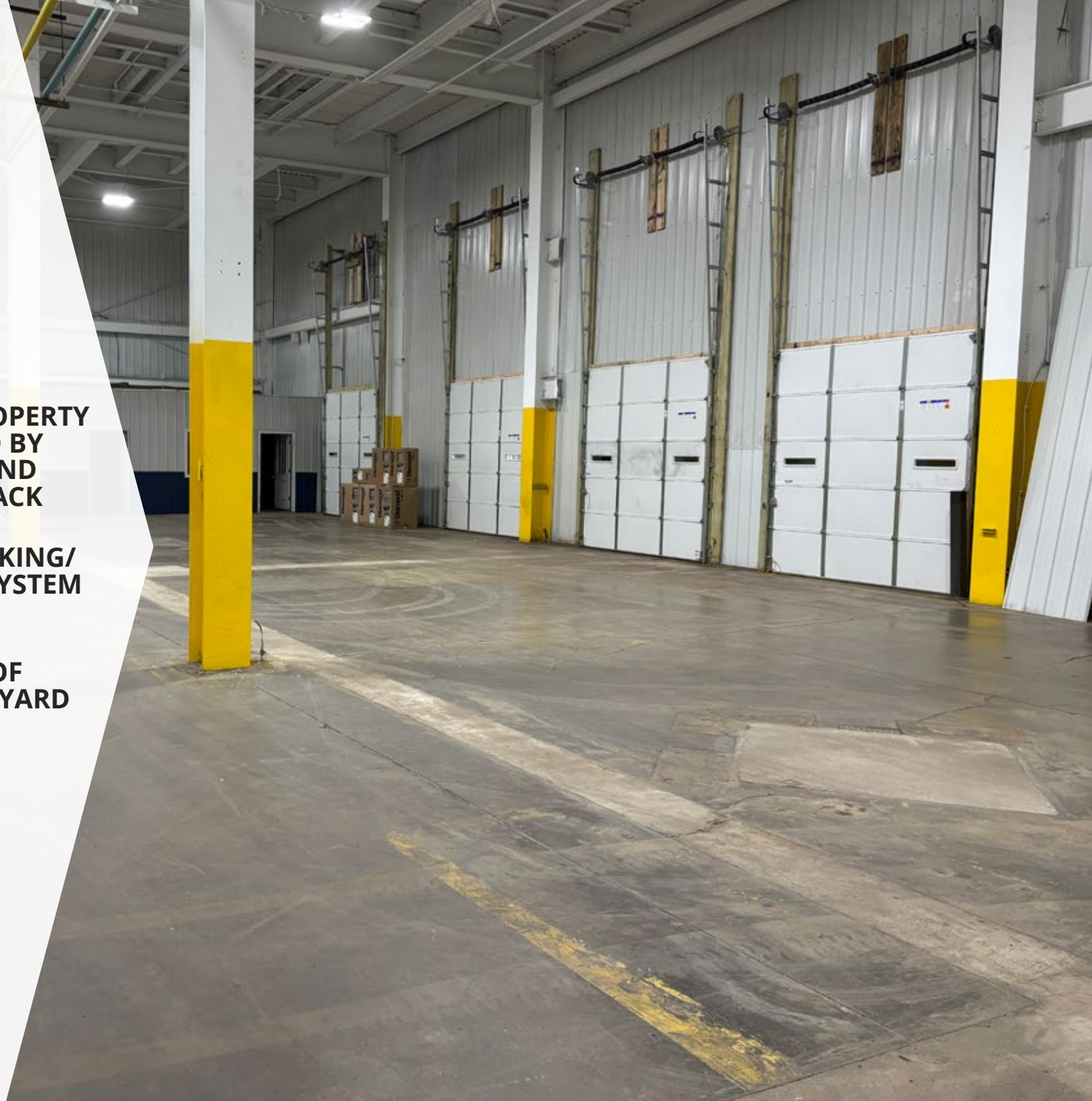
**ENTIRE PROPERTY
IS SECURED BY
FENCING AND
GUARD SHACK**



**LARGE RACKING/
STORAGE SYSTEM
IN PLACE**



**1.5 ACRES OF
LAYDOWN YARD**

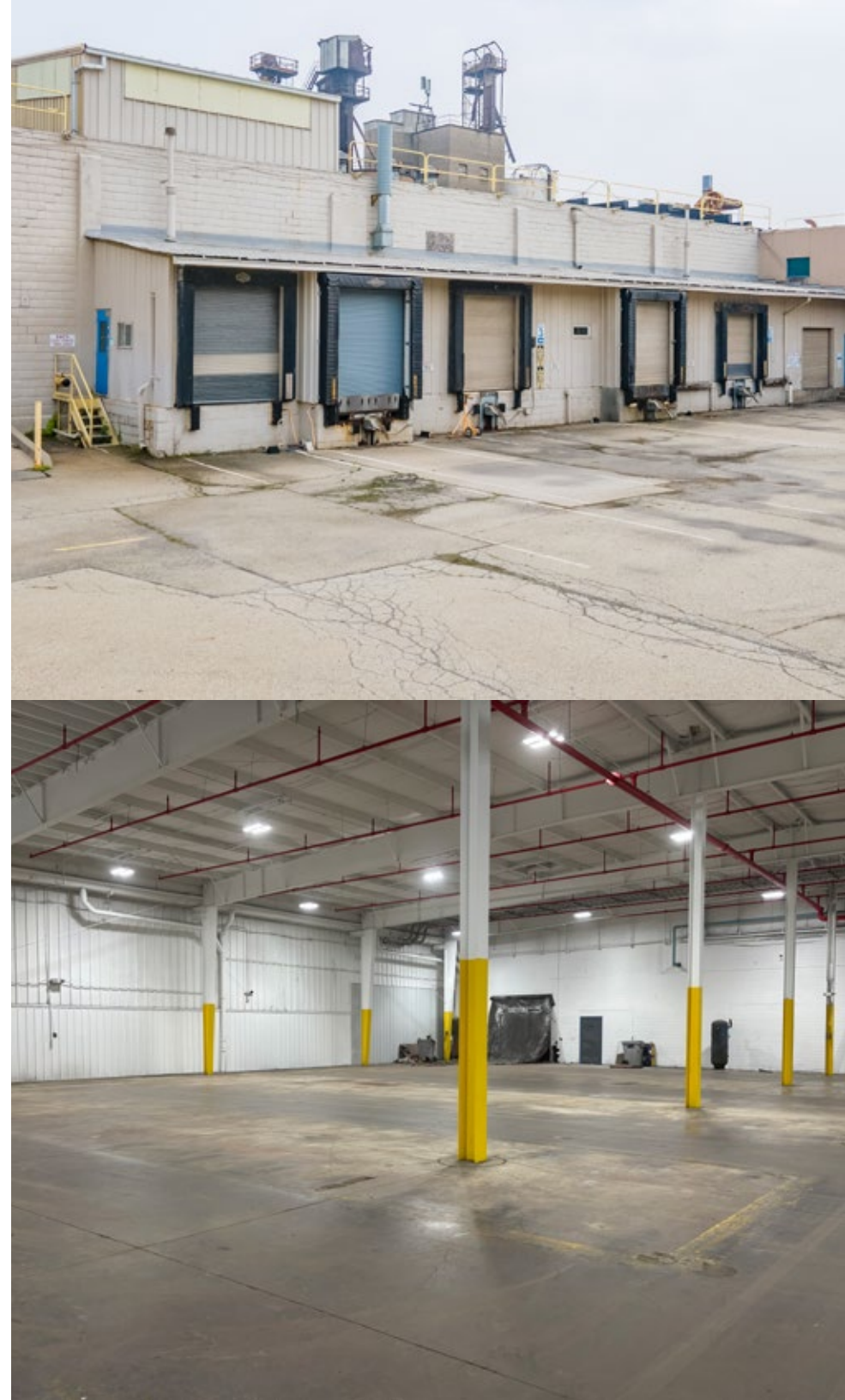


PROPERTY DETAILS

251 W WYLIE AVE | WASHINGTON, PA

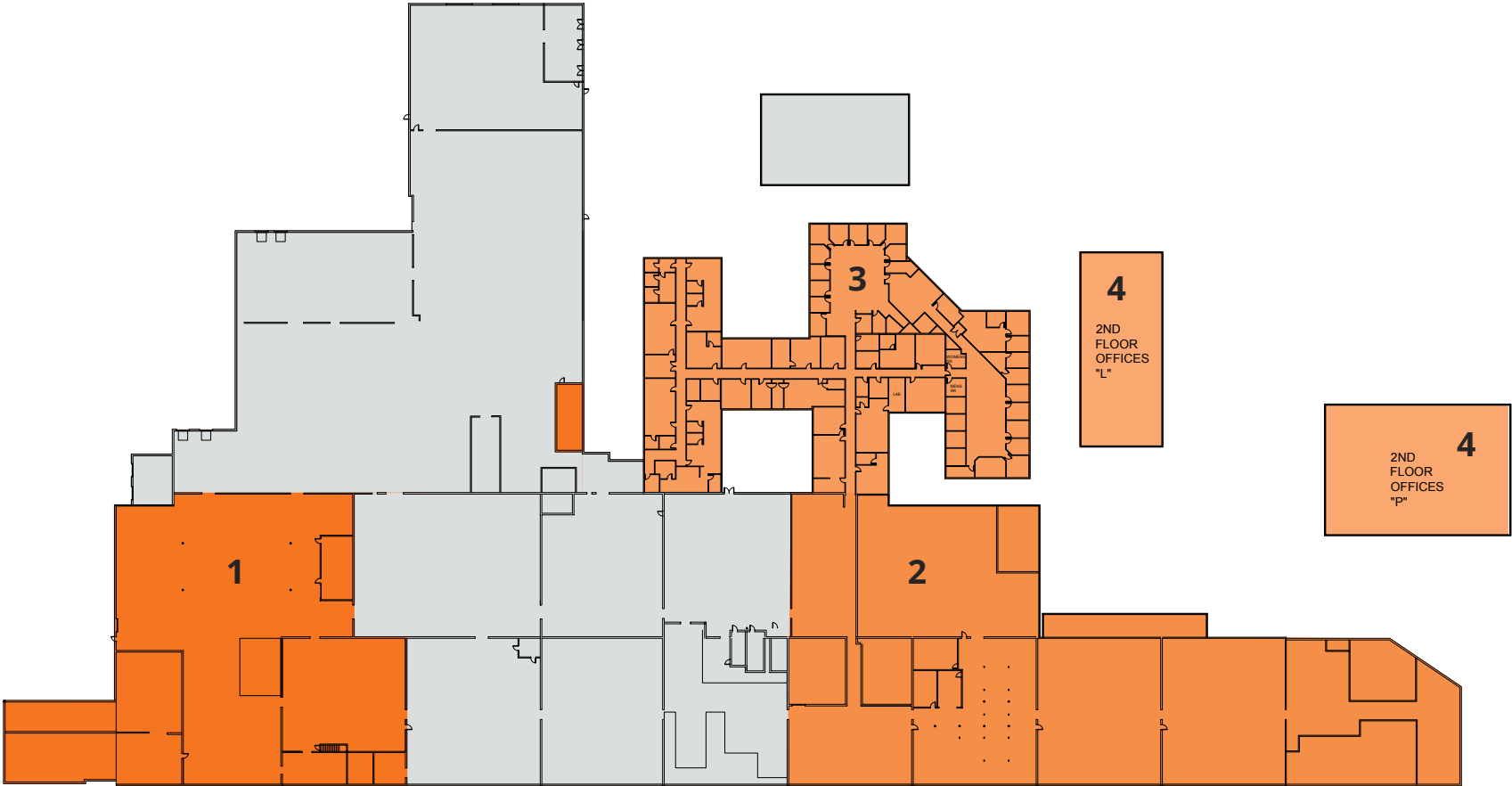
AVAILABLE SPACE	132,455 SF
WAREHOUSE SPACE	82,662 SF
OFFICE SPACE	49,793 SF
DOCK DOORS	13 with Locks & Levelers
DRIVE-INS	5
CLEAR HEIGHT	12' - 24'
FLOORS	6" Reinforced Concrete
FIRE SUPPRESSION	Wet Foam & Dry Systems
PARKING	183 Paved Parking Spaces
LAND AREA	13.58 Acres
RAIL	Rail Spur possible via CSXT
ZONING	I - Industrial
PARCEL ID	120-011-00-00-0009-00
OPEX ESTIMATE	\$0.65/SF

[VIEW A MATTERPORT WALK-THROUGH](#)

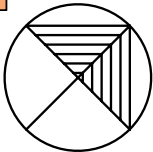
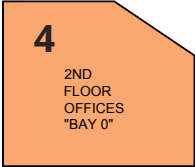


FLOOR PLAN

251 W WYLIE AVE | WASHINGTON, PA



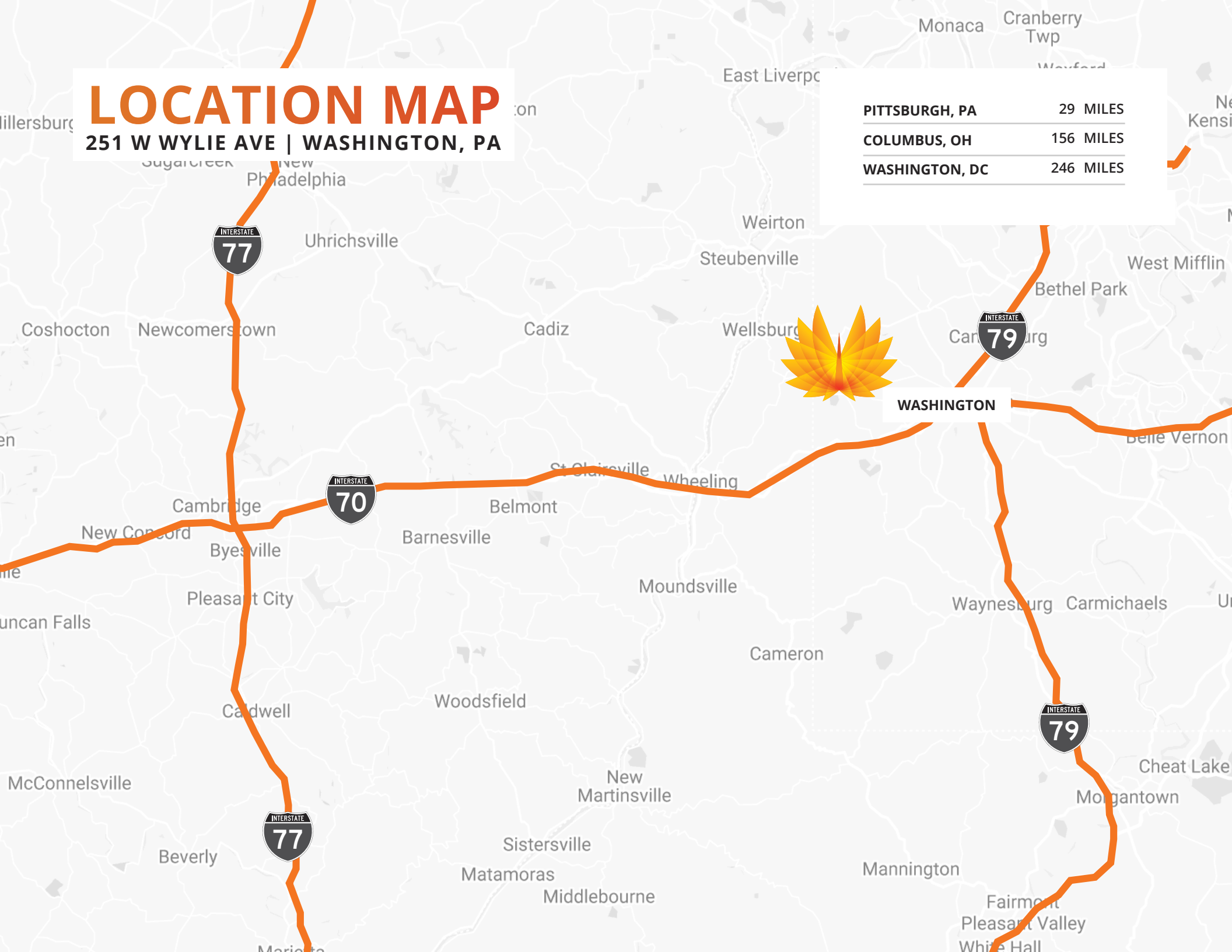
NUMBER	SPACE DESIGNATION	SQUARE FEET
1	AVAILABLE WAREHOUSE	31,980 SF
2	AVAILABLE WAREHOUSE	50,682 SF
3	AVAILABLE OFFICE	25,847 SF
4	AVAILABLE SECOND FLOOR OFFICE	23,946 SF
TOTAL		132,455 SF



LOCATION MAP

251 W WYLIE AVE | WASHINGTON, PA

PITTSBURGH, PA	29 MILES
COLUMBUS, OH	156 MILES
WASHINGTON, DC	246 MILES





FOR LEASE | **132,455 SF**
251 W WYLIE AVE | **WASHINGTON, PA**

LUKE HERDER 414-244-9574 | LHERDER@PHOENIXINVESTORS.COM
ANTHONY CRIVELLO 414-982-4810 | ANTHONY@PHOENIXINVESTORS.COM



PHOENIX
INVESTORS

Opportunity. Execution. Value Creation.