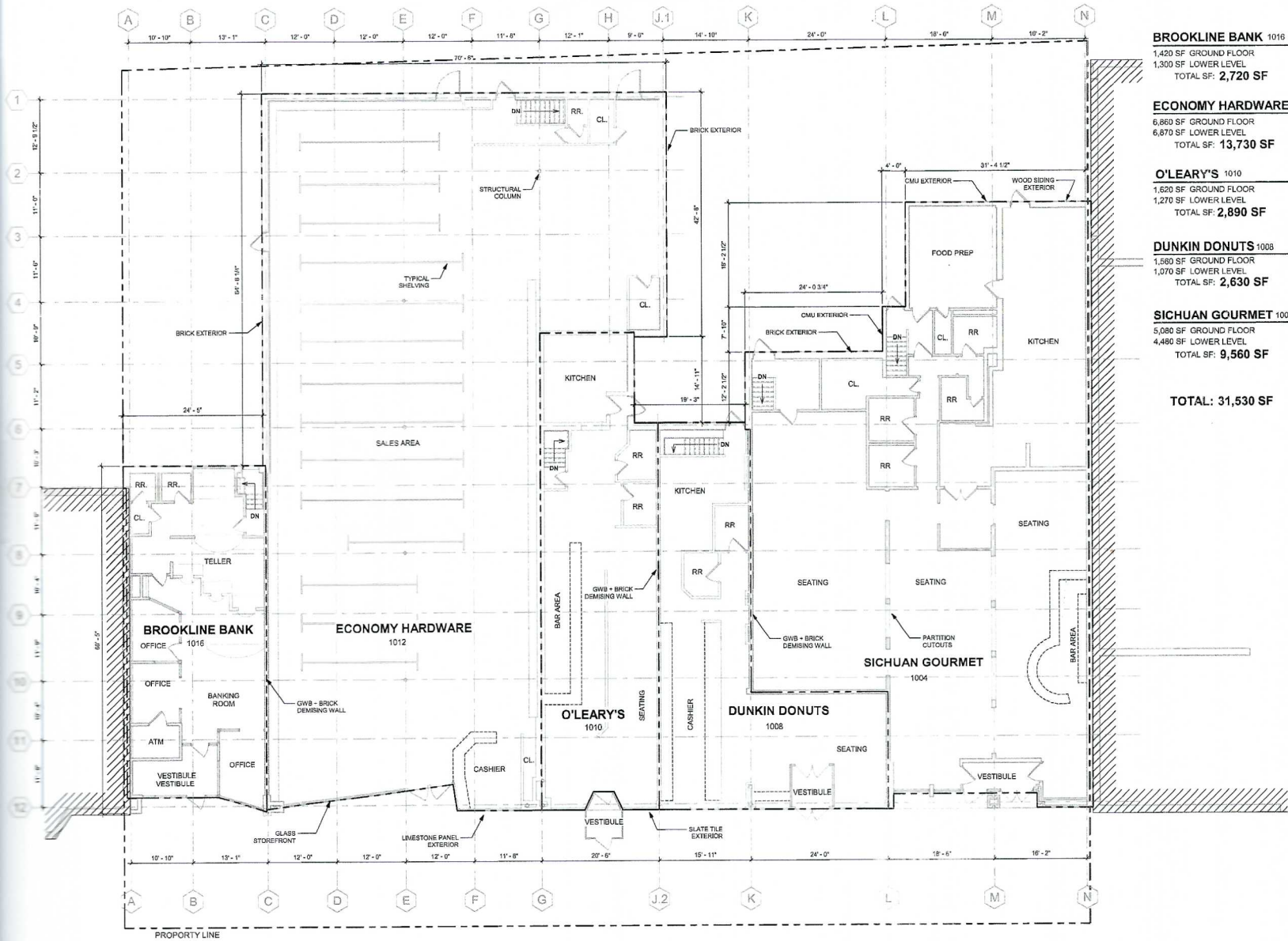


Ground Floor Plan



**BROOKLINE BANK 1016**  
 1,420 SF GROUND FLOOR  
 1,300 SF LOWER LEVEL  
 TOTAL SF: **2,720 SF**

**ECONOMY HARDWARE**  
 6,860 SF GROUND FLOOR  
 6,870 SF LOWER LEVEL  
 TOTAL SF: **13,730 SF**

**O'LEARY'S 1010**  
 1,620 SF GROUND FLOOR  
 1,270 SF LOWER LEVEL  
 TOTAL SF: **2,890 SF**

**DUNKIN DONUTS 1008**  
 1,580 SF GROUND FLOOR  
 1,070 SF LOWER LEVEL  
 TOTAL SF: **2,630 SF**

**SICHUAN GOURMET 1004**  
 5,080 SF GROUND FLOOR  
 4,480 SF LOWER LEVEL  
 TOTAL SF: **9,560 SF**

**TOTAL: 31,530 SF**

**GROUND LEVEL - EXISTING CONDITIONS**

ST MARYS COURT



OUTDOOR SEATING

- UNIT 1 - 44 SEATS
- UNIT 2 - 48 SEATS
- UNIT 3 - 24 SEATS
- UNIT 4/5 - 48 SEATS
- UNIT 6 - 56 SEATS

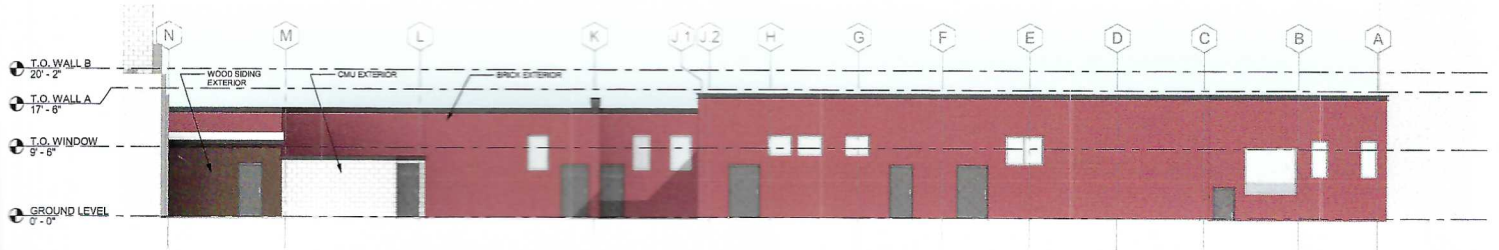
TOTAL OUTDOOR SEATING  
220 SEATS

SCALE: 1" = 10'

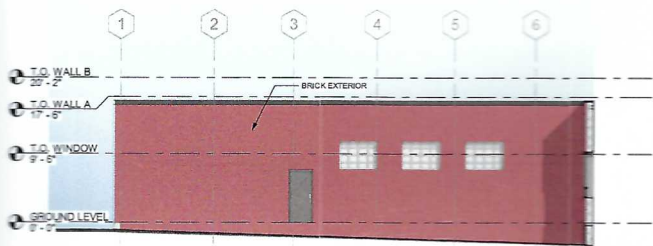
Elevations



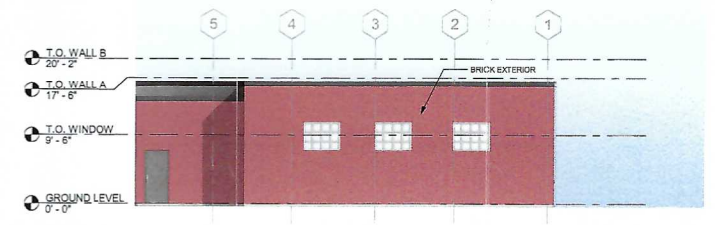
**A NORTH ELEVATION**  
SCALE: 1/8" = 1'-0"



**C SOUTH ELEVATION**  
SCALE: 1/8" = 1'-0"



**B EAST ELEVATION**  
SCALE: 1/8" = 1'-0"



**D WEST ELEVATION**  
SCALE: 1/8" = 1'-0"