

AVAILABLE FOR LEASE
WEST SHAW VILLAGE

2700-2784 W. SHAW AVENUE
FRESNO, CA



For information, please contact:

Troy A. McKenney

Newmark Pearson Commercial

t 559-447-6277

tmckenney@pearsonrealty.com

CA RE Lic. #00952671

Kelsey McKenney

Retail California

t 559-447-6218

kelsey@retailcalifornia.com

CA RE Lic. #02217573

Coryne McKenney

Newmark Pearson Commercial

t 559-447-6239

cmckenney@pearsonrealty.com

CA RE Lic. #02200479

NEWMARK
PEARSON COMMERCIAL

RETAIL
CALIFORNIA

MCKENNEY
Investment Properties

Independently Owned and Operated | Corporate License #00020875

newmarkpearson.com | retailcalifornia.com | mckenneyinvestmentproperties.com

The distributor of this communication is performing acts for which a real estate license is required. The information contained herein has been obtained from sources deemed reliable but has not been verified and no guarantee, warranty or representation, either express or implied, is made with respect to such information. Terms of sale or lease and availability are subject to change or withdrawal without notice.

WEST SHAW VILLAGE - FRESNO, CA

PROPERTY INFORMATION	Availability:	Various		
	Corner Pad:	1.26± Acres (Ground Lease)	Total Square Feet:	38,427± Total Square Feet
	Suite 2712:	1,000± SF	APN's:	415-052-49 (Fresno County)
	Suite 2718:	1,295± SF	Lot Size:	4.00± Acres
	Suite 2730:	1,719± SF (Pending)	Year Built:	1983
	Suite 2744:	1,440± SF		
	Lease Rate:	TBD		

NEARBY TENANTS

Tenants include Culichi Town Restaurant, Foster’s Donuts, Pete’s Teriyaki, Ewell’s Place, AT&TWireless, All State Insurance, Shila Korean BBQ, Uncle Harry’s Bagels and Dash of Glam Nail Salon. The property is across the street from Target, Ross, Big 5 and many more national & local retailers.

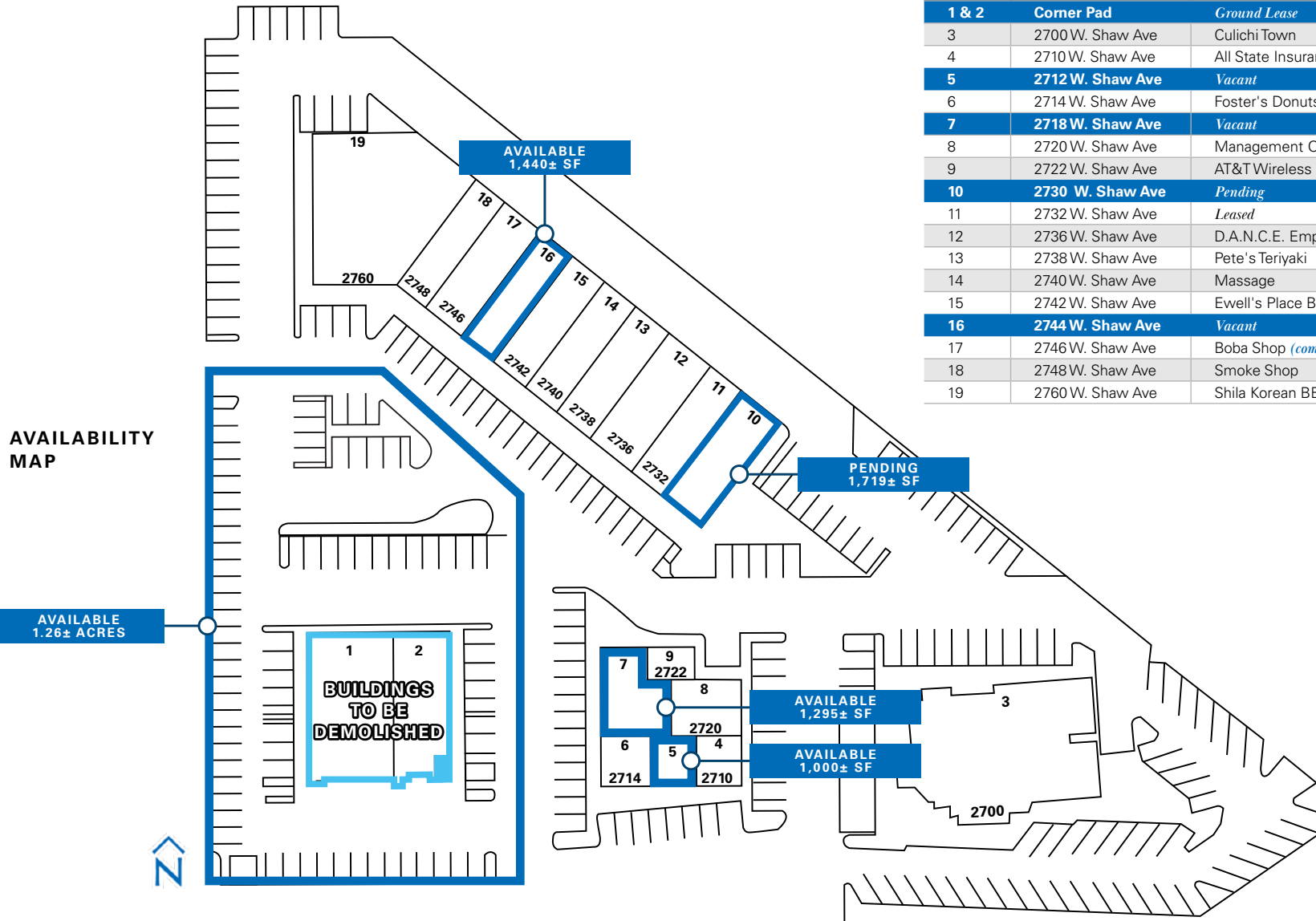
TRAFFIC COUNTS

The center has exceptional visibility and signage available with high traffic counts at the intersection.

Marks Avenue @ Shaw Avenue - 21,017 ADT (northbound)
Shaw Avenue @ Marks Avenue - 40,446 ADT (westbound)
Source: Kalibrate TrafficMetrix 2021

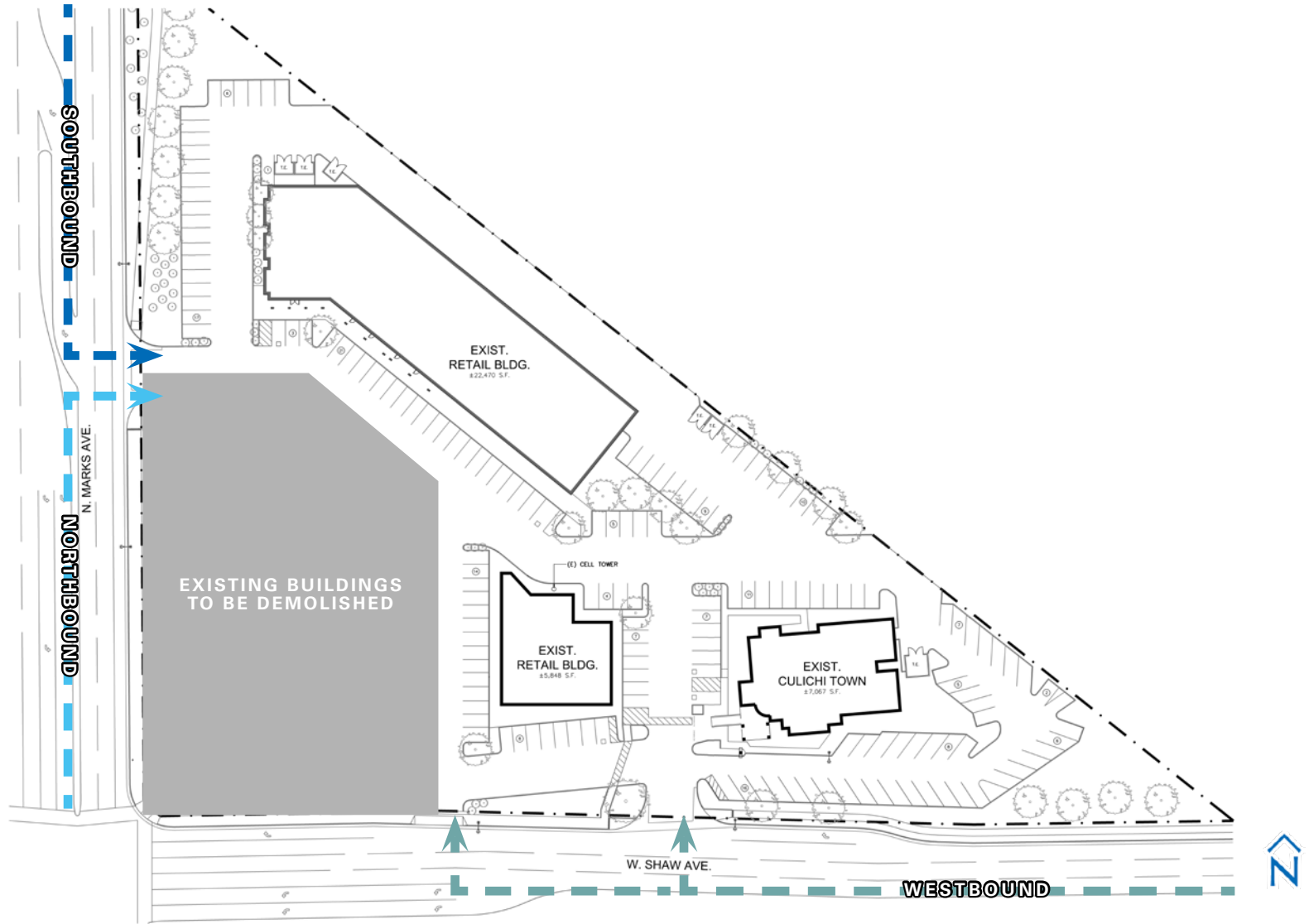
- HIGHLIGHTS**
- Great Visibility
 - Easy Access from Shaw Avenue & Marks Avenue
 - Adjacent to Major Retailers
 - Hard Corner Signalized Intersection
 - Signage Available on Monument Sign

WEST SHAW VILLAGE - FRESNO, CA



#	ADDRESS	TENANT	SIZE
1 & 2	Corner Pad	Ground Lease	1.26± AC
3	2700 W. Shaw Ave	Culichi Town	6,010± SF
4	2710 W. Shaw Ave	All State Insurance	840± SF
5	2712 W. Shaw Ave	Vacant	1,000± SF
6	2714 W. Shaw Ave	Foster's Donuts	1,120± SF
7	2718 W. Shaw Ave	Vacant	1,295± SF
8	2720 W. Shaw Ave	Management Office	643± SF
9	2722 W. Shaw Ave	AT&T Wireless	443± SF
10	2730 W. Shaw Ave	Pending	1,719± SF
11	2732 W. Shaw Ave	Leased	1,728± SF
12	2736 W. Shaw Ave	D.A.N.C.E. Empowerment	2,016± SF
13	2738 W. Shaw Ave	Pete's Teriyaki	1,380± SF
14	2740 W. Shaw Ave	Massage	1,377± SF
15	2742 W. Shaw Ave	Ewell's Place Bar	1,440± SF
16	2744 W. Shaw Ave	Vacant	1,440± SF
17	2746 W. Shaw Ave	Boba Shop (coming soon)	1,800± SF
18	2748 W. Shaw Ave	Smoke Shop	1,656± SF
19	2760 W. Shaw Ave	Shila Korean BBQ	6,100± SF

**SITE PLAN
WITH STREET
ENTRY PATHS**





For information, please contact:

Troy A. McKenney

Newmark Pearson Commercial

t 559-447-6277

tmckenney@pearsonrealty.com

CA RE Lic #00952671

Kelsey McKenney

Retail California

t 559-447-6218

kelsey@retailcalifornia.com

CA RE Lic. #02217573

Coryne McKenney

Newmark Pearson Commercial

t 559-447-6239

cmckenney@pearsonrealty.com

CA RE Lic. #02200479

NEWMARK
PEARSON COMMERCIAL

RETAIL
CALIFORNIA

MCKENNEY
Investment Properties

Independently Owned and Operated | Corporate License #00020875

newmarkpearson.com | retailcalifornia.com | mckenneyinvestmentproperties.com

The distributor of this communication is performing acts for which a real estate license is required. The information contained herein has been obtained from sources deemed reliable but has not been verified and no guarantee, warranty or representation, either express or implied, is made with respect to such information. Terms of sale or lease and availability are subject to change or withdrawal without notice.