

For SALE

\$575,000

205 Pinecroft Drive, Roselle, IL 60172



- Zoned B3 for Retail, Office, Medical, Tech, etc.
- 1,192 Sq Feet
- 10,890 Land Sq Feet
- High Visibility off of Irving Park Road
- Large Parking Lot in Rear with Street Parking
- Close to Downtown Roselle and Expressways



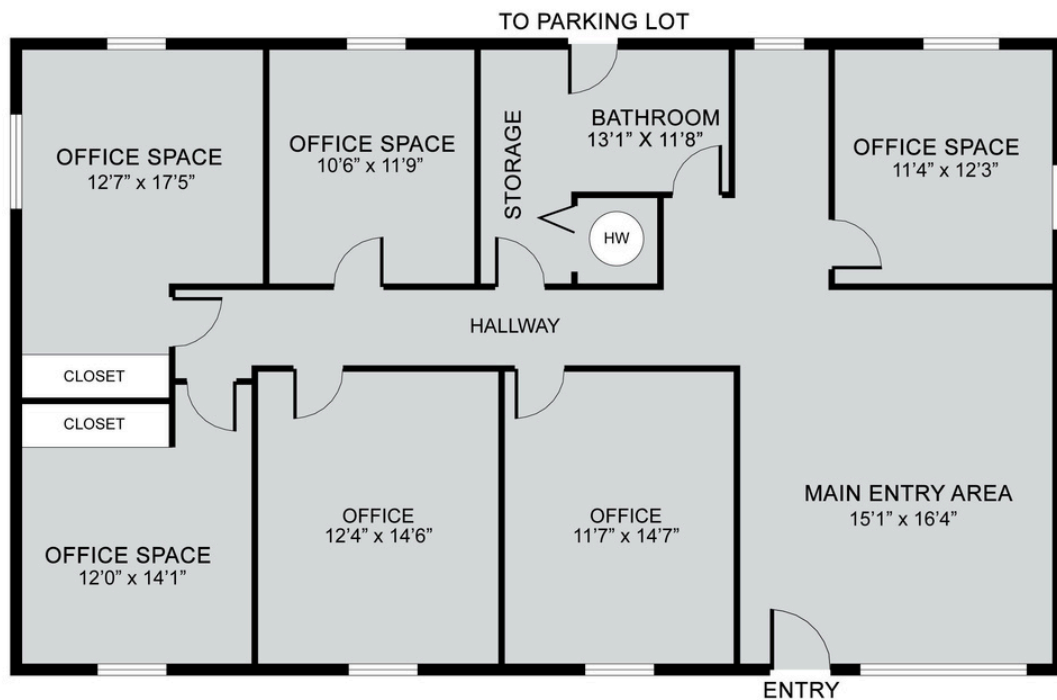
Contact Us

(630) 669-9901

tim@timsotisgroup.com

timsotisgroup.com





Contact Us

(630) 669-9901

tim@timsotisgroup.com

timsotisgroup.com





Contact Us

(630) 669-9901

tim@timsotisgroup.com

timsotisgroup.com



TIM SOTIS GROUP

COMMERCIAL & RESIDENTIAL REAL ESTATE