

\$1,170,000 (\$295 PSF)



2627 SOUTH 21ST STREET

PHOENIX, ARIZONA 85034

Total Size: +/- 3,969 Square Feet

Office: +/- 1,700 Square Feet

Warehouse: +/- 2,269 Square Feet

15' Clear Height

Grade Level Overhead Door

200 Amps, 120/208V, 3 Phase Power

A-2 Zoning, City of Phoenix

+/- 1,500 Square Foot Fenced Yard



Todd Hamilton, SIOR, CCIM

Managing Partner/Designated Broker

602.909.8759

todd@citywidecre.com

2122 East Highland Avenue, Suite 225 • Phoenix, Arizona 85016 • 602.313.1000 • citywidecre.com

Adam Shteir

Partner

602.769.0521

adam@citywidecre.com



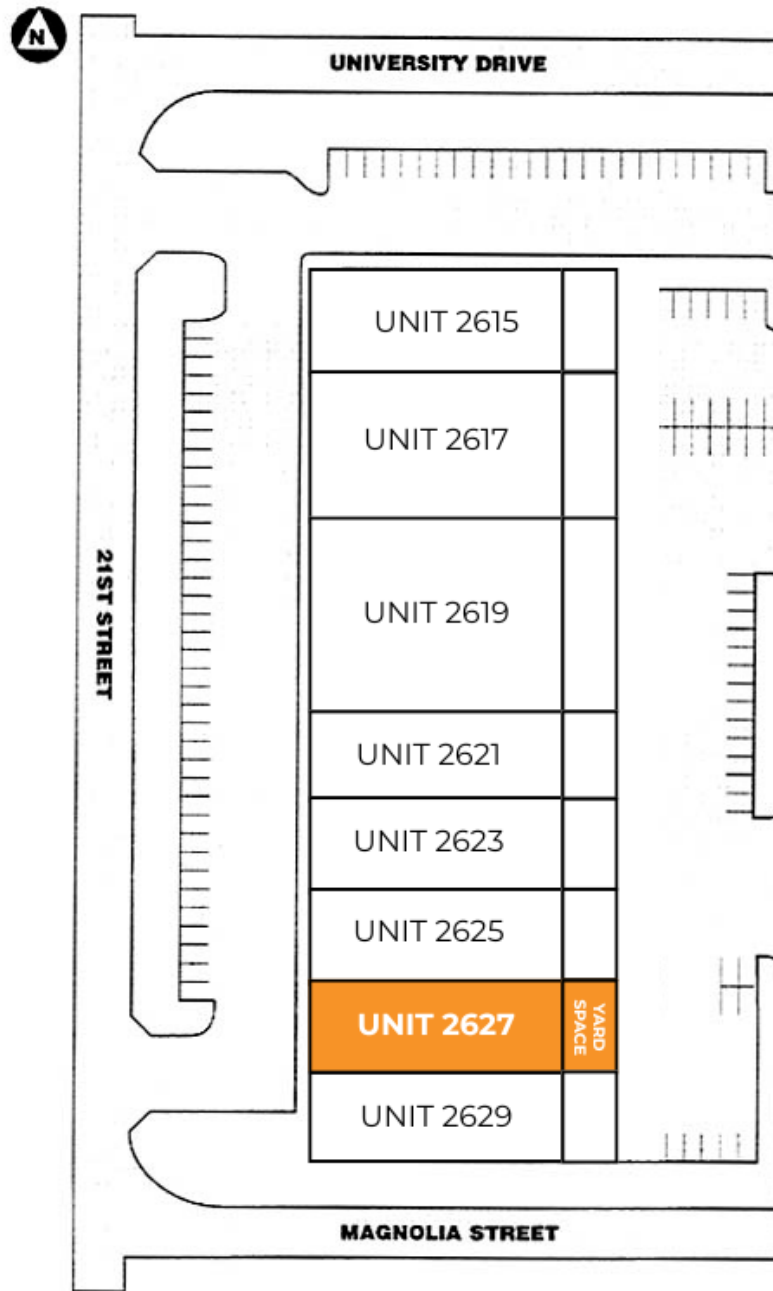
Todd Hamilton, SIOR, CCIM

Managing Partner/Designated Broker
602.909.8759
todd@citywidecre.com

Adam Shteir

Partner
602.769.0521
adam@citywidecre.com

2122 East Highland Avenue, Suite 225 • Phoenix, Arizona 85016 • 602.313.1000 • citywidecre.com



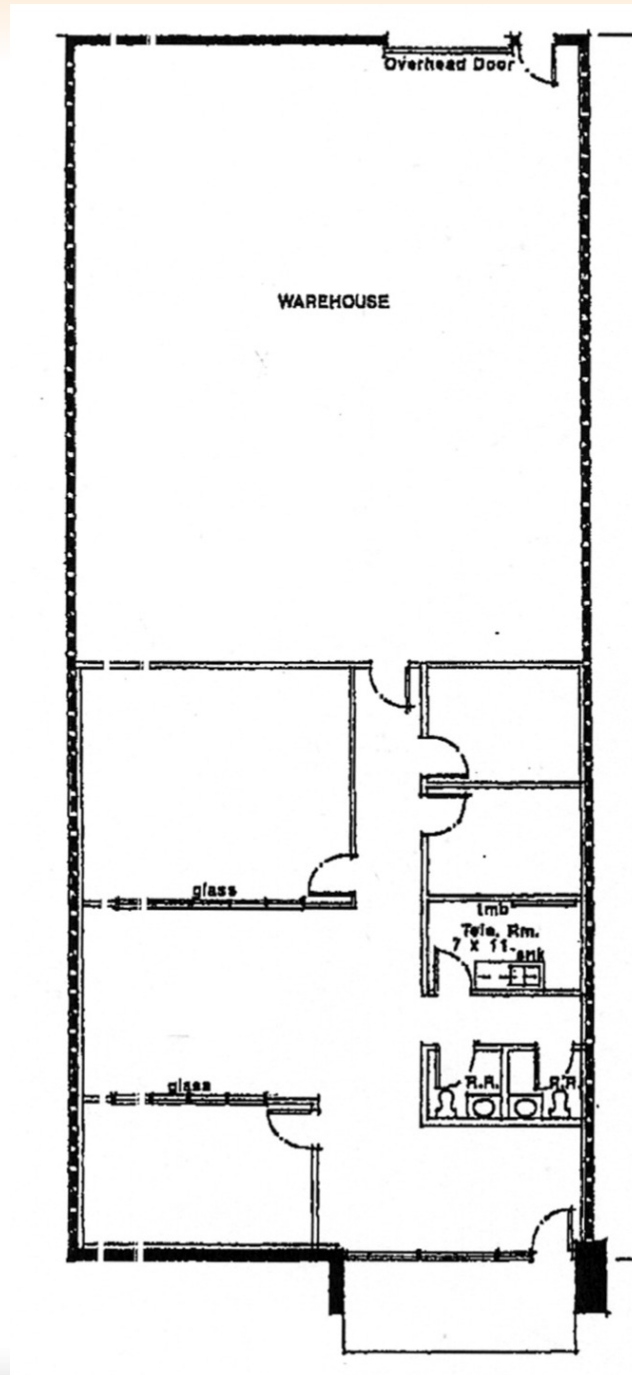
Todd Hamilton, SIOR, CCIM

Managing Partner/Designated Broker
602.909.8759
todd@citywidecre.com

Adam Shteir

Partner
602.769.0521
adam@citywidecre.com

2122 East Highland Avenue, Suite 225 • Phoenix, Arizona 85016 • 602.313.1000 • citywidecre.com



Todd Hamilton, SIOR, CCIM

Managing Partner/Designated Broker
602.909.8759
todd@citywidecre.com

Adam Shteir

Partner
602.769.0521
adam@citywidecre.com

2122 East Highland Avenue, Suite 225 • Phoenix, Arizona 85016 • 602.313.1000 • citywidecre.com