

**Now
Leasing**

**215 Richard
Arrington Blvd N
Birmingham,
AL**

Premier Office Building located at
the corner of Richard Arrington Blvd
and 3rd Ave N in the Birmingham
CBD



**Top Prominent
Building
Signage
Available**



Tower Capital
2098 2nd Ave N
Suite 410
Birmingham, Alabama 35204

Jeff Dyl
Leasing Director
205-454-1781
jdyl@towercapital.net

**Top Prominent
Building Signage
Available**



AVAILABLE SUITES

Suite 100 **±5,238 SF**

Mezzanine **±3,964 SF**

Suite 200 **±6,200 SF**

Suite 201 **±2,652 SF**

Suite 305 **±1,624 SF**

Suite 307 **±778 SF**

Suite 401 **±2,098 SF**

Suite 503 **±1,040 SF**

Suite 505 **±757 SF**

Suite 811 **±1,862 SF**

Suite 901 **±1,543 SF**

BUILDING FEATURES

- > Recently Renovated Prominent 10 Story office/retail building with ±52,127 SF
- > Located in downtown Birmingham, AL in the heart of the Financial District
- > Numerous parks, restaurants, museums and lodging are a short walk away.
- > Dramatic panoramic views of downtown Birmingham and Red Mountain.
- > Attached parking deck and surrounding lots offer multiple parking options
- > New building wide HVAC system installed in 2019
- > Numerous rent ready options available



Walking Distance
to Amenities



Ample On-Site
Parking



Class B
Building



Tower Capital, LLC
a real estate investment & development co.





Tower Capital, LLC
a real estate investment & development co.



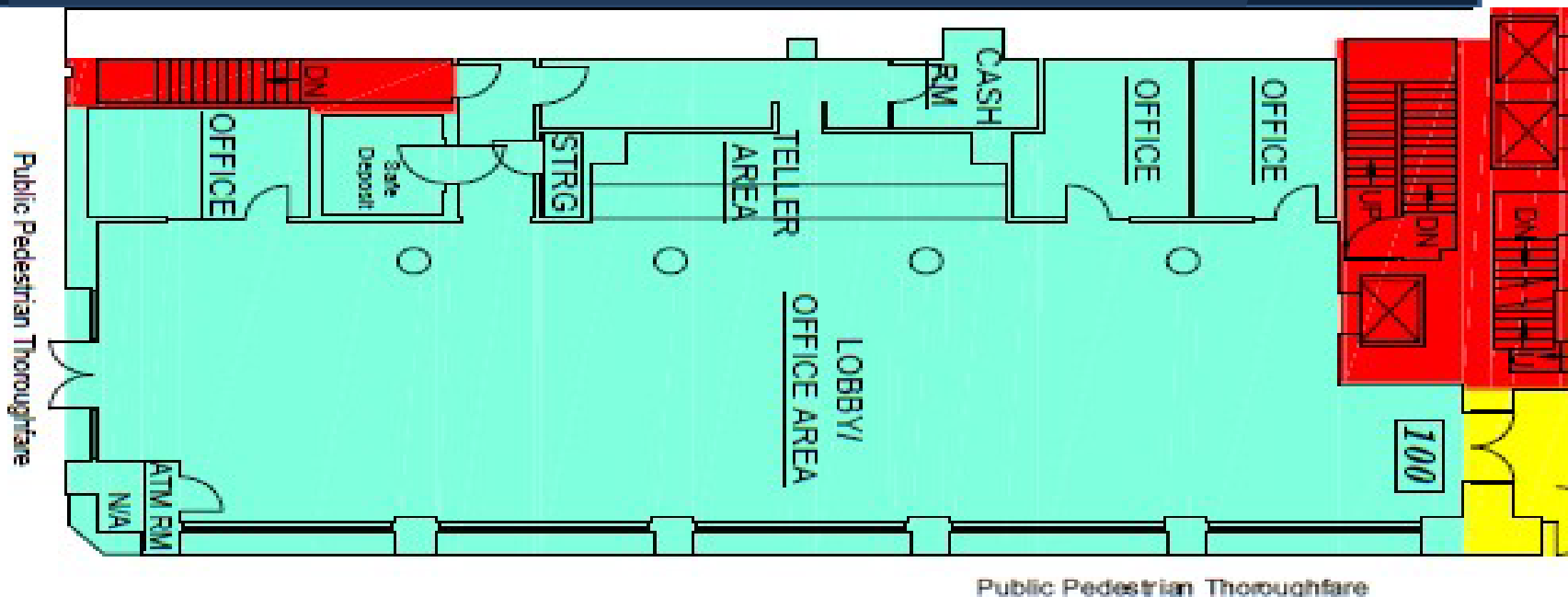
Multiple Suites With Built-In Bookcases



Spectacular Unobstructed Views



Recently Renovated Elevator Cabs



RICHARD ARRINGTON BLVD NORTH

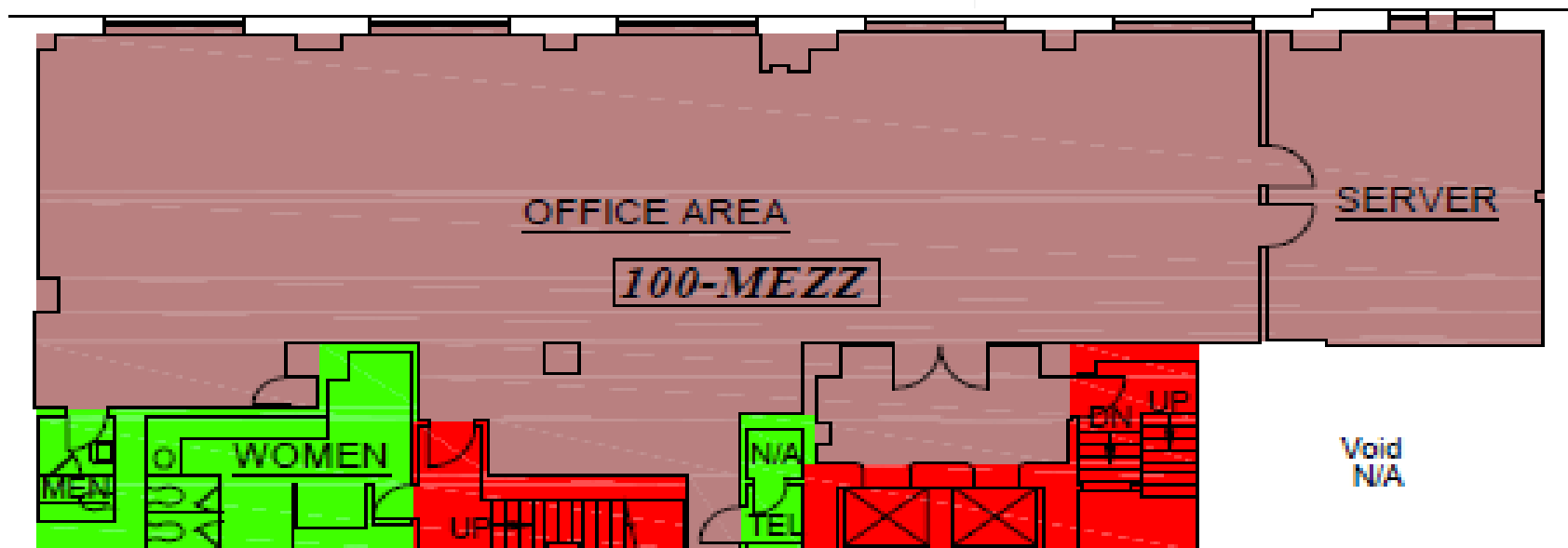


First Floor Specifications

Lease Rate **\$17.50/sf/yr Full Service**

Suite 100 – ±5,238SF*

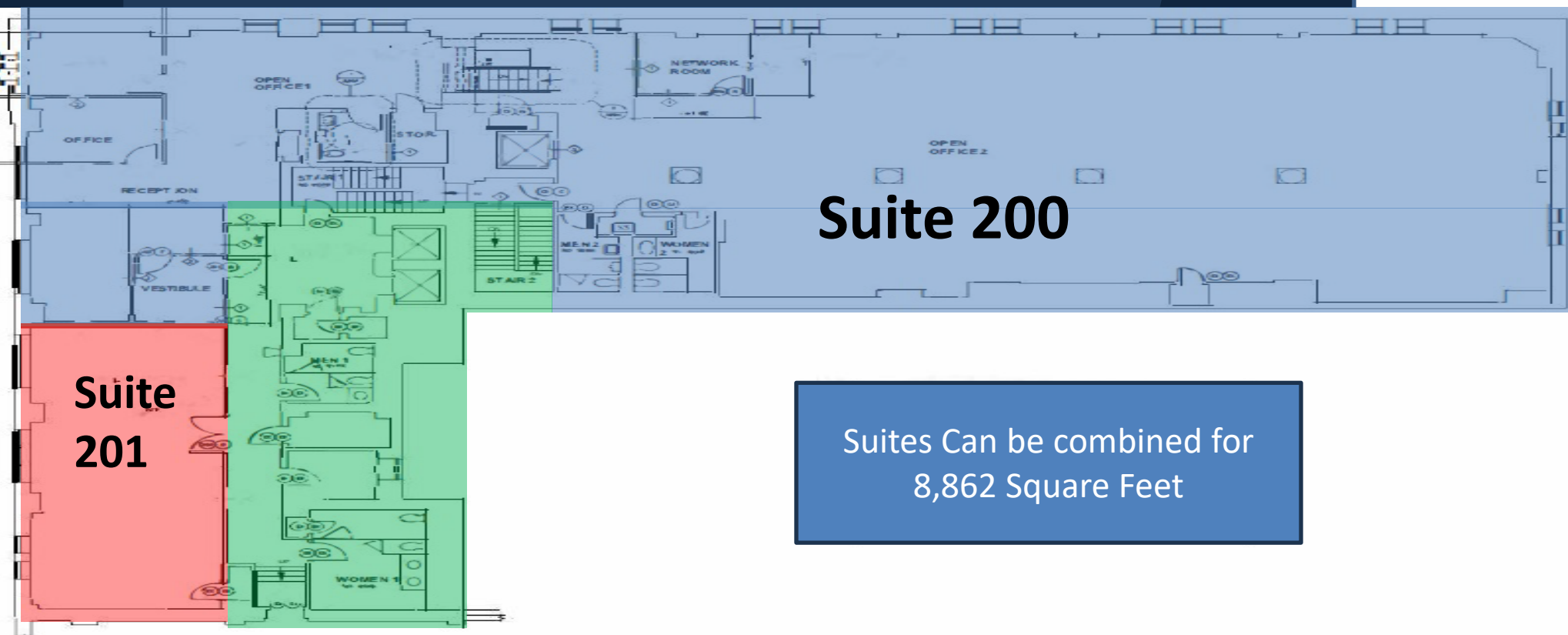




Mezzanine Specifications

Lease Rate **\$14.00/sf/yr Full Service**

 **Mezzanine— ±3,952SF***



Suite 200

Suite 201

Suites Can be combined for
8,862 Square Feet

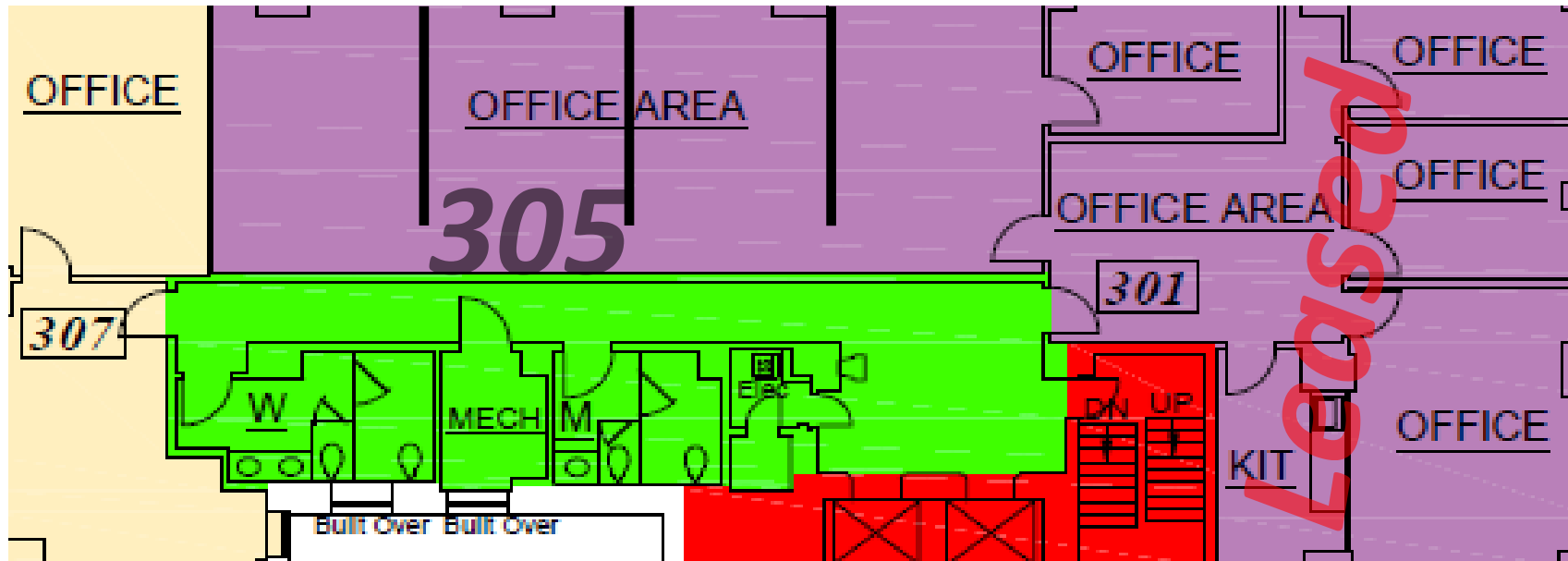
2nd FLOOR SUITE SPECIFICATIONS



Suite 200- ±6,200 \$12.50SF



Suite 201- ±2,682 \$14.50SF



3rd FLOOR SUITE SPECIFICATIONS

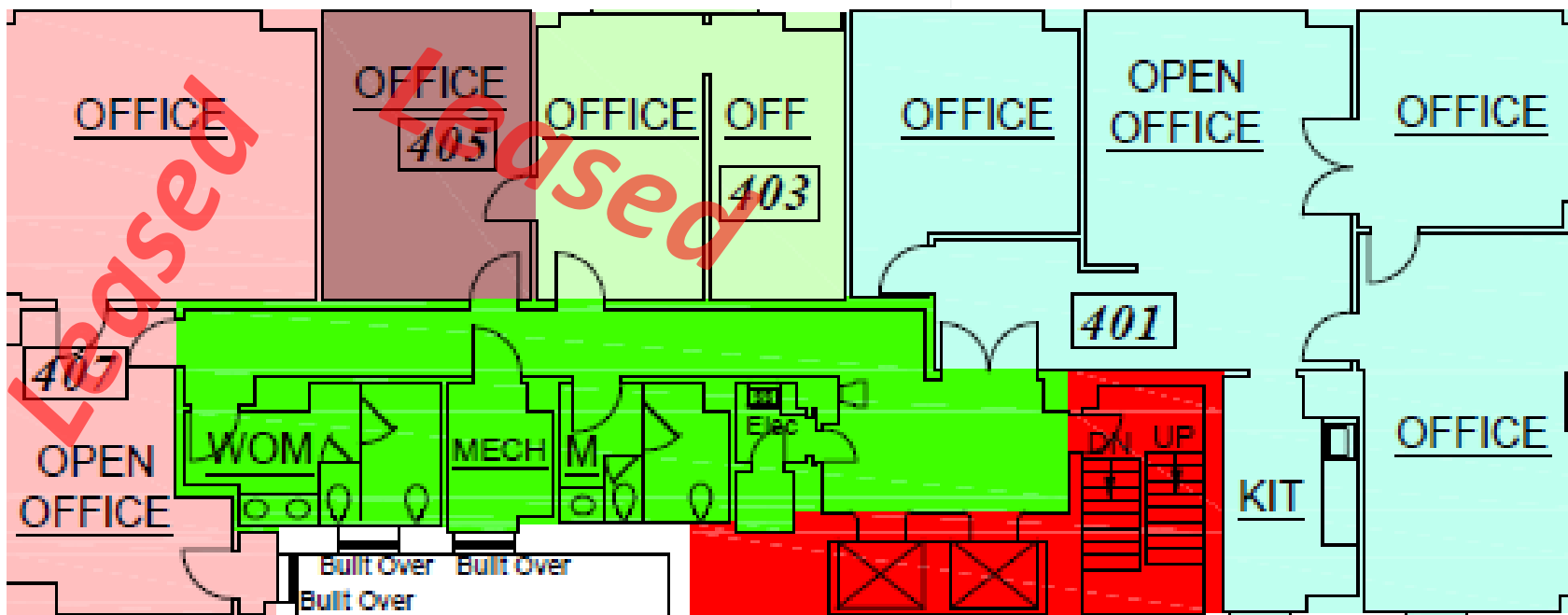
Lease Rate **\$14.50/sf/yr Full Service**



Suite 305 – ±1,624SF



Suite 307 – ± 778SF



4th FLOOR SUITE SPECIFICATIONS

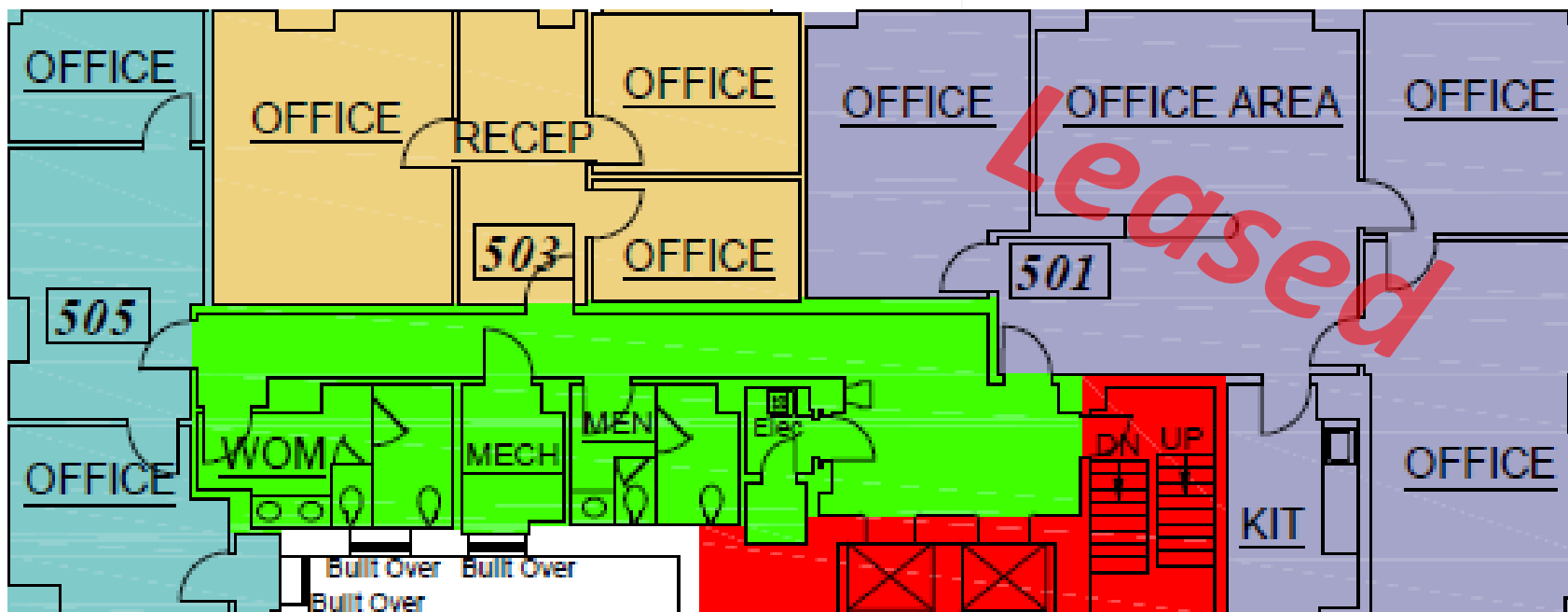
Lease Rate **\$14.00/sf/yr Full Service**



Suite 401- ±2,099SF



Suite 407- ±947SF

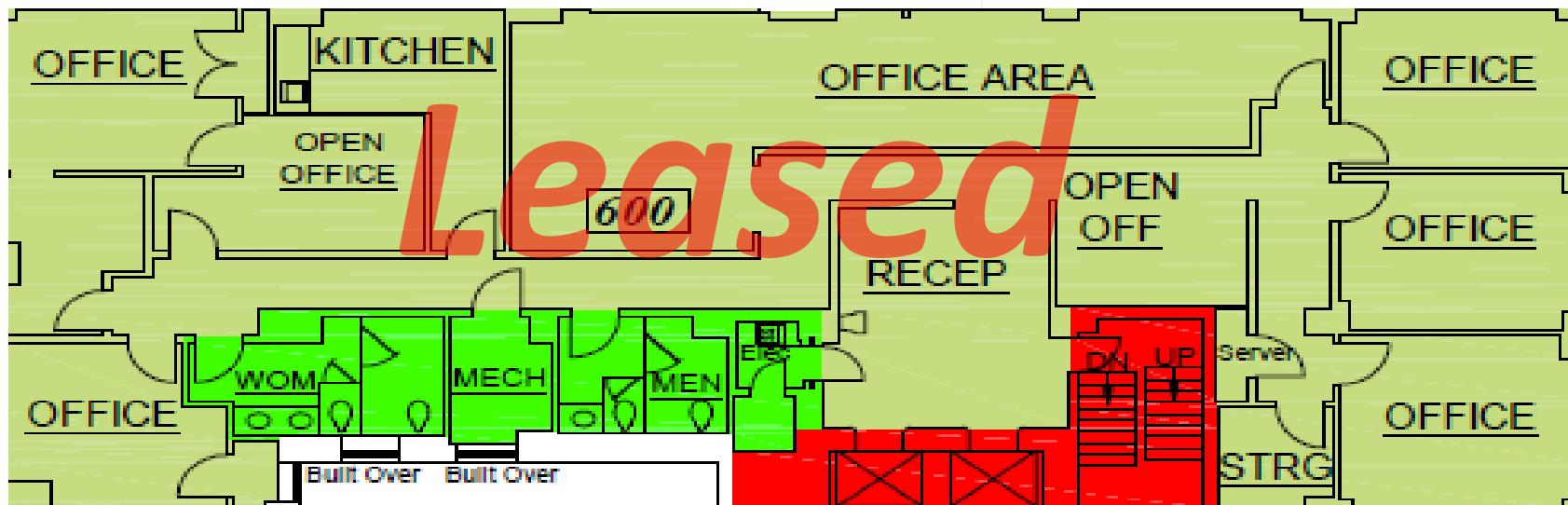


5th FLOOR SUITE SPECIFICATIONS

Lease Rate **\$14.50/sf/yr**

 **Suite 505 – ±757SF** Rent Ready

 **Suite 503 -1,040SF** Rent Ready

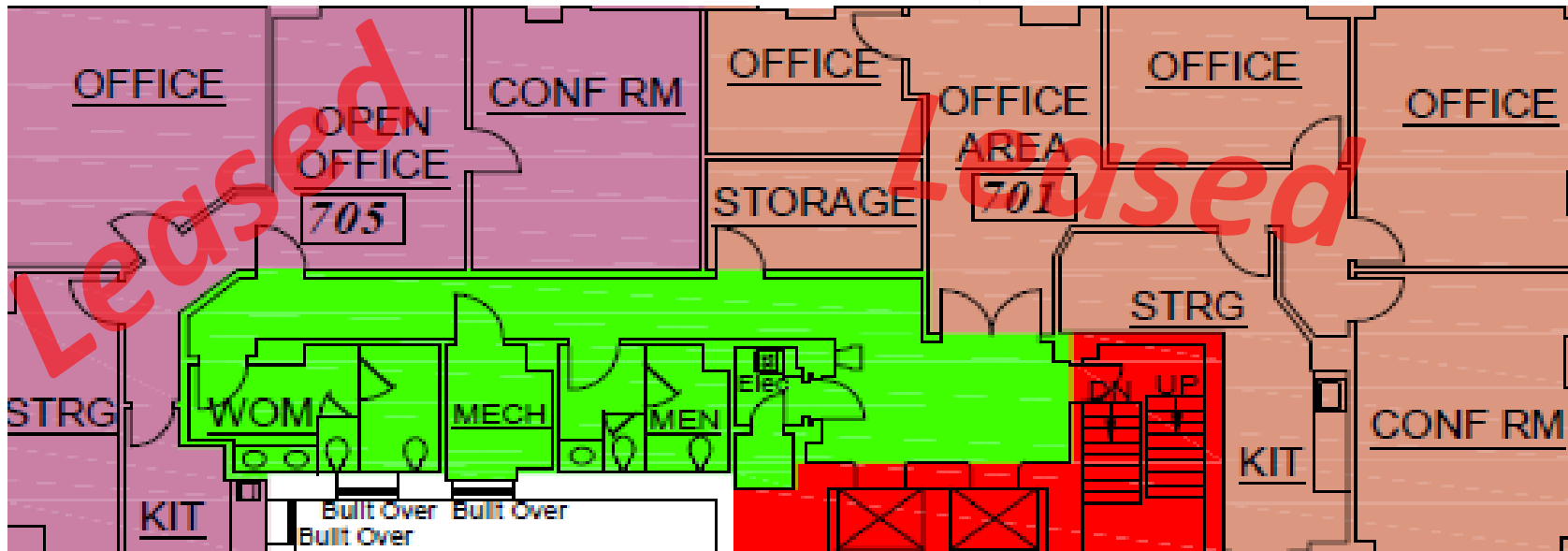


6th FLOOR SUITE SPECIFICATIONS

Lease Rate **\$13.50/sf/yr Full Service**



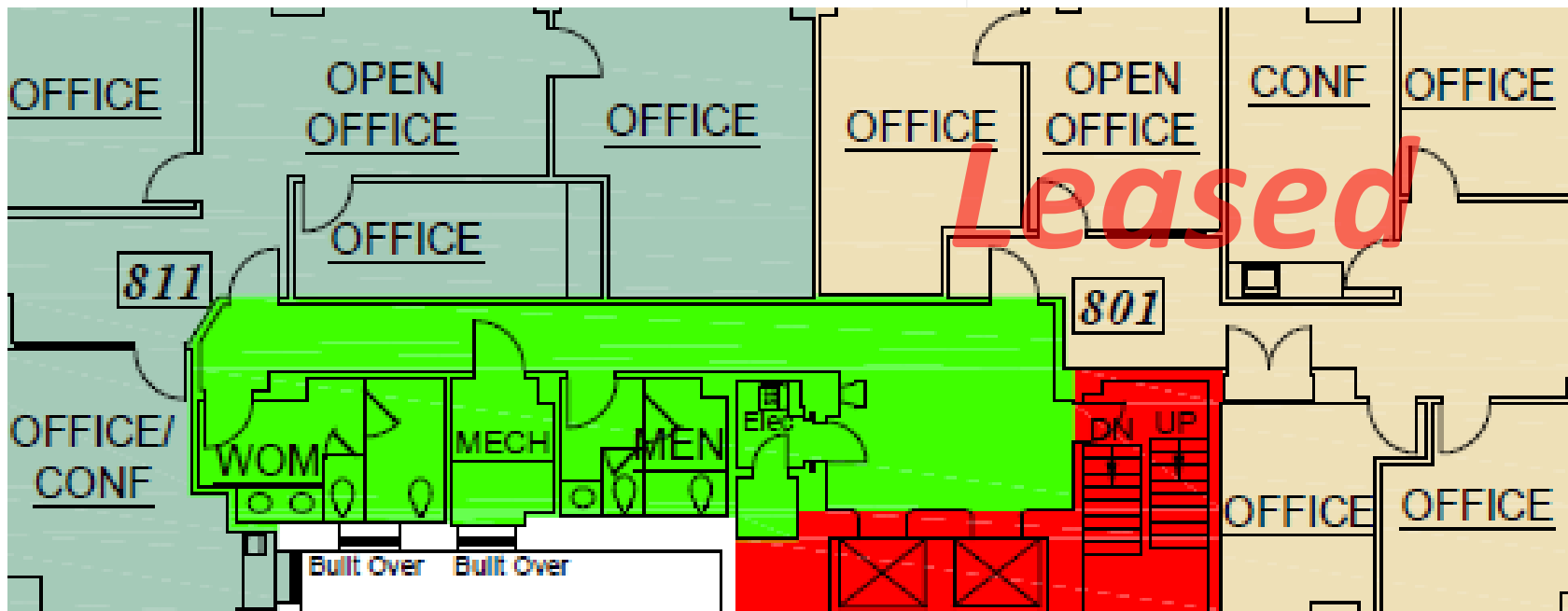
Suite 600 – ±3,952SF – Full Floor



7th FLOOR SUITE SPECIFICATIONS

Lease Rate \$14.00/sf/yr Full Service Rent Ready

 Suite 701 – ±2,342SF



8th FLOOR SUITE SPECIFICATIONS

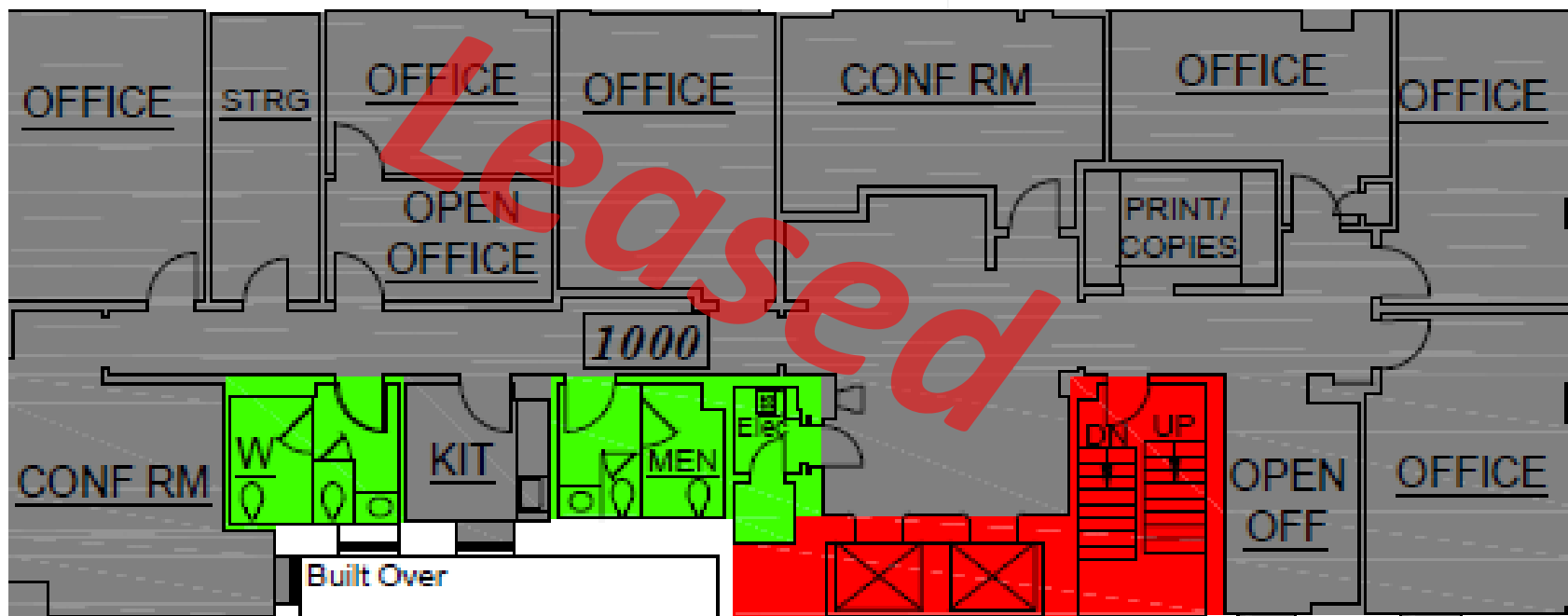
Lease Rate **\$15.00/sf/yr Full Service**



Suite 801 – ±2,119SF



Suite 811 – ±1,862 SF



10th FLOOR SUITE SPECIFICATIONS

Lease Rate **\$15.00 – \$17.50/sf/yr Full Service**

Entire floor recently renovated.

Prime Corner Location In the Heart of Birmingham CBD



Tower Capital, LLC
a real estate investment & development co.





**Top Prominent
Building
Signage
Available**

Jeff Dyl
Leasing Manager
205-454-1781 Cell
jdyl@towercapital.net

Tower Capital
2098 2nd Ave N
Birmingham, AL 35204

