

FOR LEASE

Concord Office Space- 100 Main Street



THREE SUITES REMAINING

Property Highlights:

- Former Welch's headquarters
- Professionally managed
- Reserved parking in rear
- Adjacent to municipal lot
- Handicap accessible with elevator

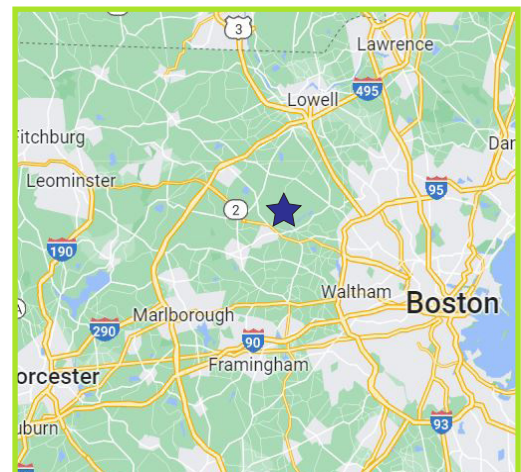
Available Spaces:

- 2nd floor - 1,525 SF*
- 2nd floor - 2,792 SF*
- 1st floor - single office

*Can be combined to lease entire 2nd floor

Contact:

Tyler Spring 617.834.8602 Tspring@omniproperties.com
George Robb 857.891.7254 Grobbs@omniproperties.com

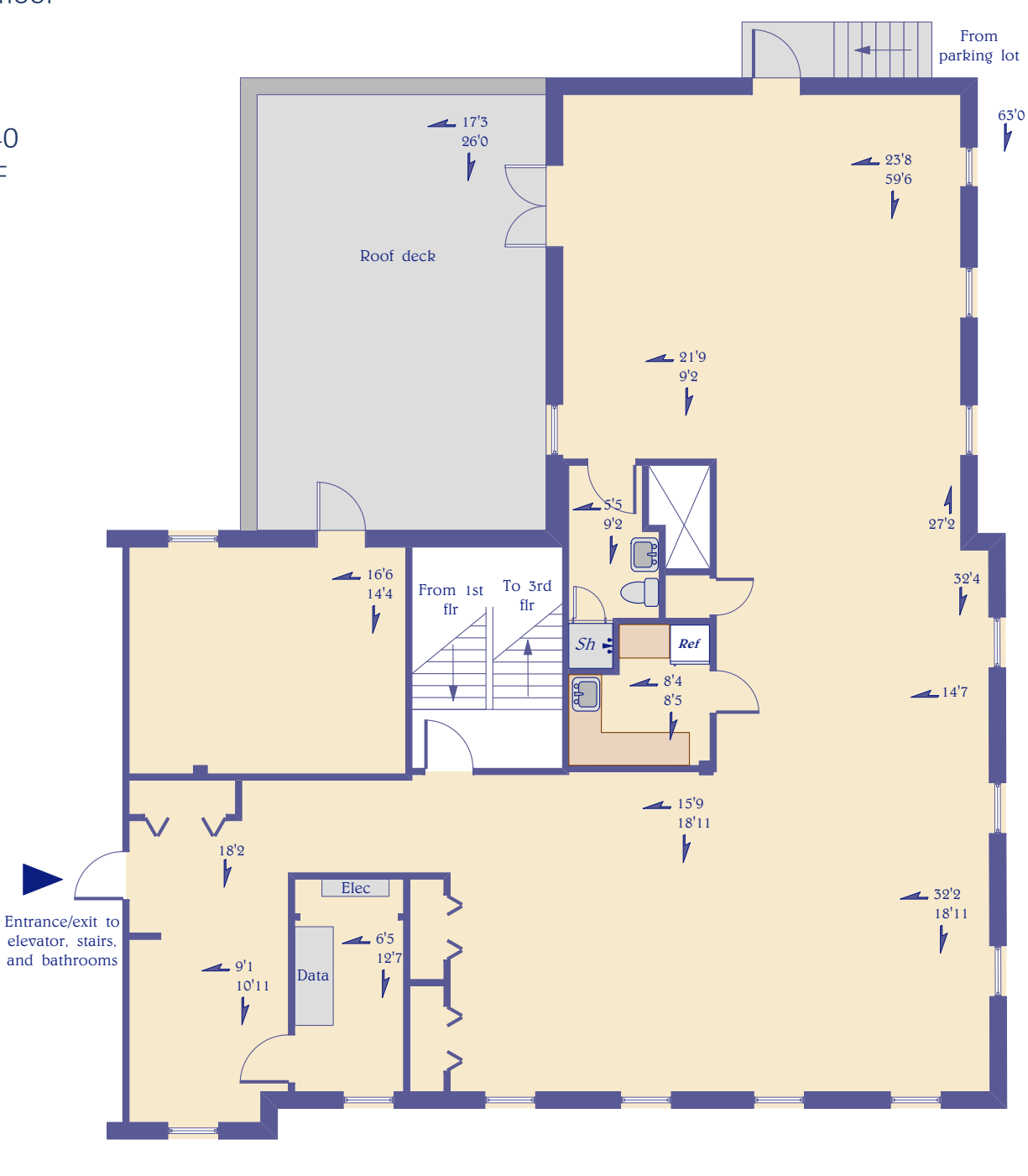


6 Lyberty Way, Westford MA 01886

100 Main Street, Concord MA

2nd floor

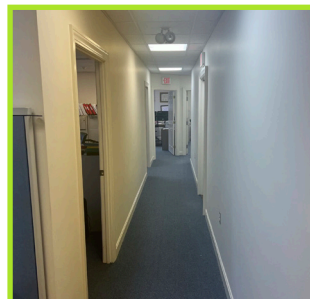
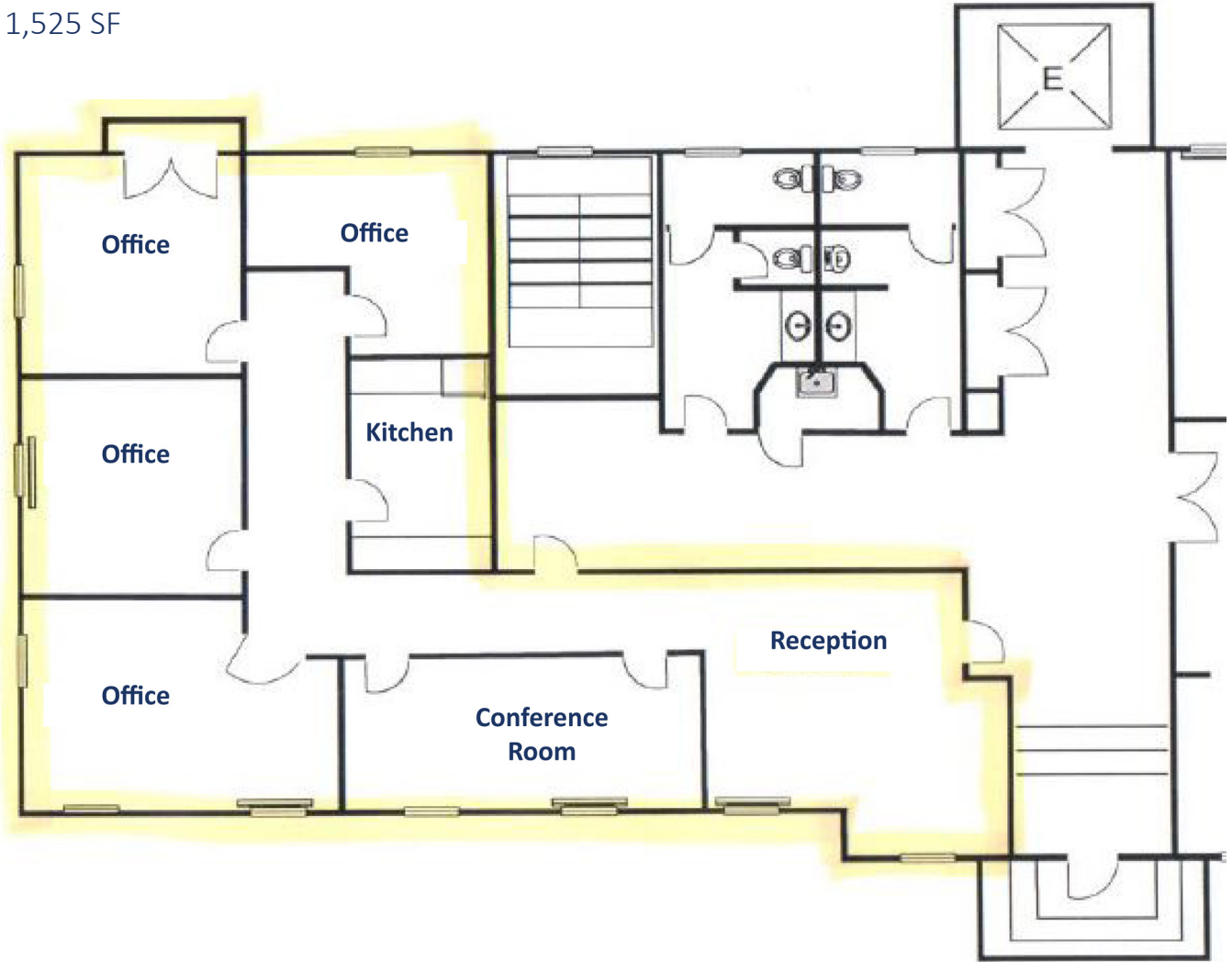
Suite 240
2,792 SF



100 Main Street, Concord MA

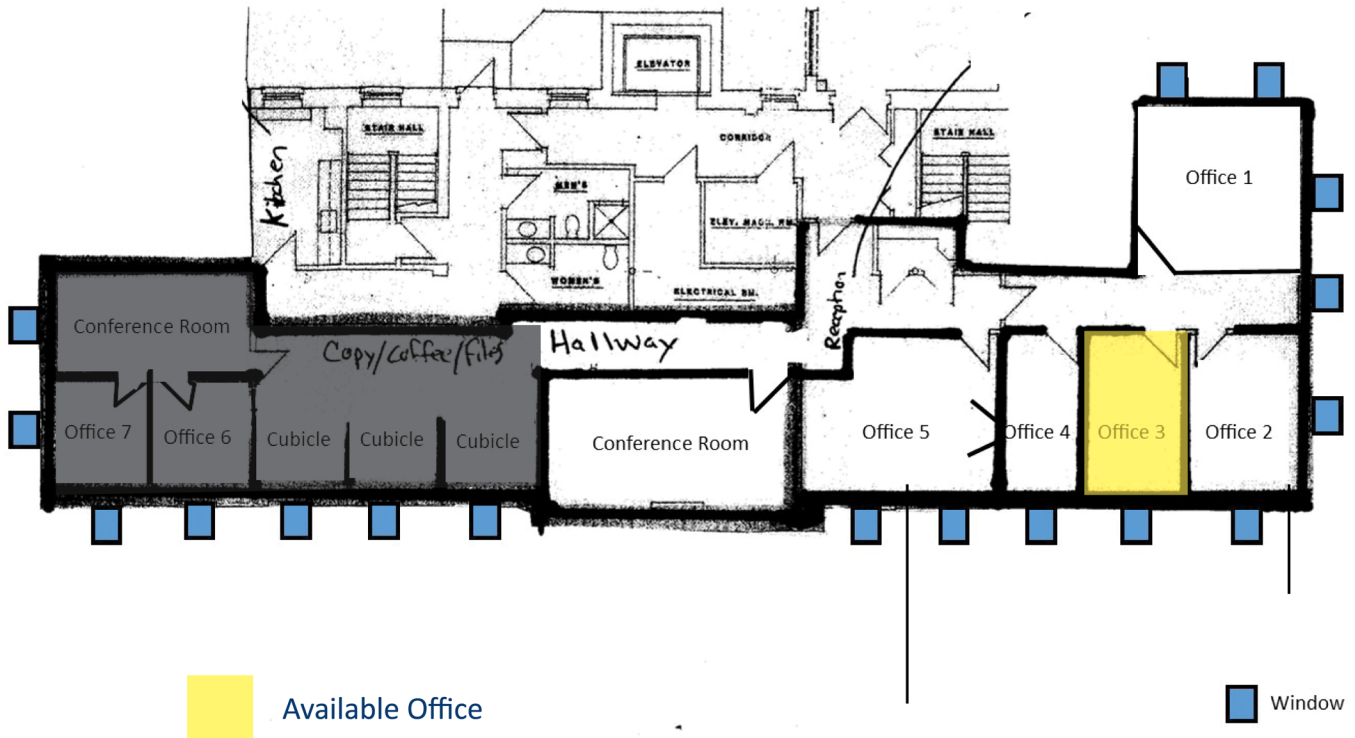
2nd floor

Suite 210
1,525 SF



1st floor
Office 3

\$725/Month (includes utilities)



OMNI PROPERTIES

Disclaimer: The Evaluation Material contains information provided by the Owner and obtained by the Broker. While the information is believed to be accurate, Receiving Party should independently evaluate its completeness and accuracy before making an offer. This Evaluation Material is subject to prior placement, errors, omissions, changes or withdrawal without notice and does not constitute a recommendation, endorsement or advice as to the value of the Property by Disclosing Party.