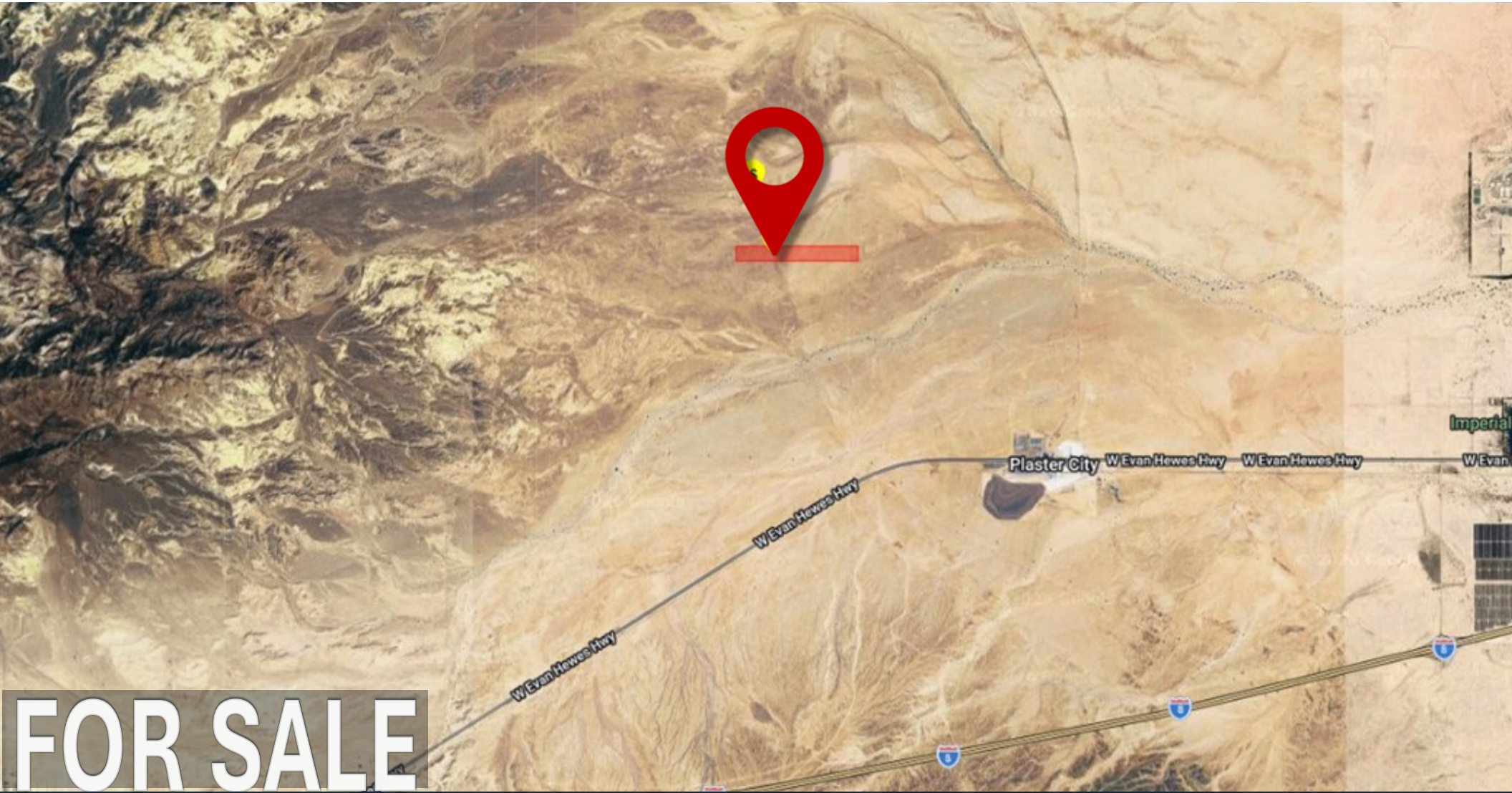


IMPERIAL VALLEY OCOTILLO LAND ± 130 AC (4 LOTS) SOLD TOGETHER OR SEPARATELY



ROBERT PHILLIPS; CPM

President / CEO
Robert@PacificCoastCommercial.com
Lic. 00706262

OFFICE (619) 469-3600

10721 Trenea Street, Suite 200, San Diego, CA 92131
www.PacificCoastCommercial.com
Lic. 01209930

The information in this brochure is provided for general marketing purposes only and is believed to be reliable but not guaranteed. Interested parties should verify all details independently, including zoning, measurements, and property condition. The property owner and agents make no warranties or representations and reserve the right to change or withdraw the property or terms at any time without notice. This is not an offer or contract.



130 AC OCOTILLO

LAND FOR SALE

PROPERTY SIZE:

Four Lots Totaling ± 130 Acres

- 2-20 Acre Lots
- 1-10 Acre Lot
- 1-80 Acre Lot

PROPERTY TYPE:

- Recreational Vacation Spot
- RV, Four-Wheel & Dirt Bike Haven

LOCATION:

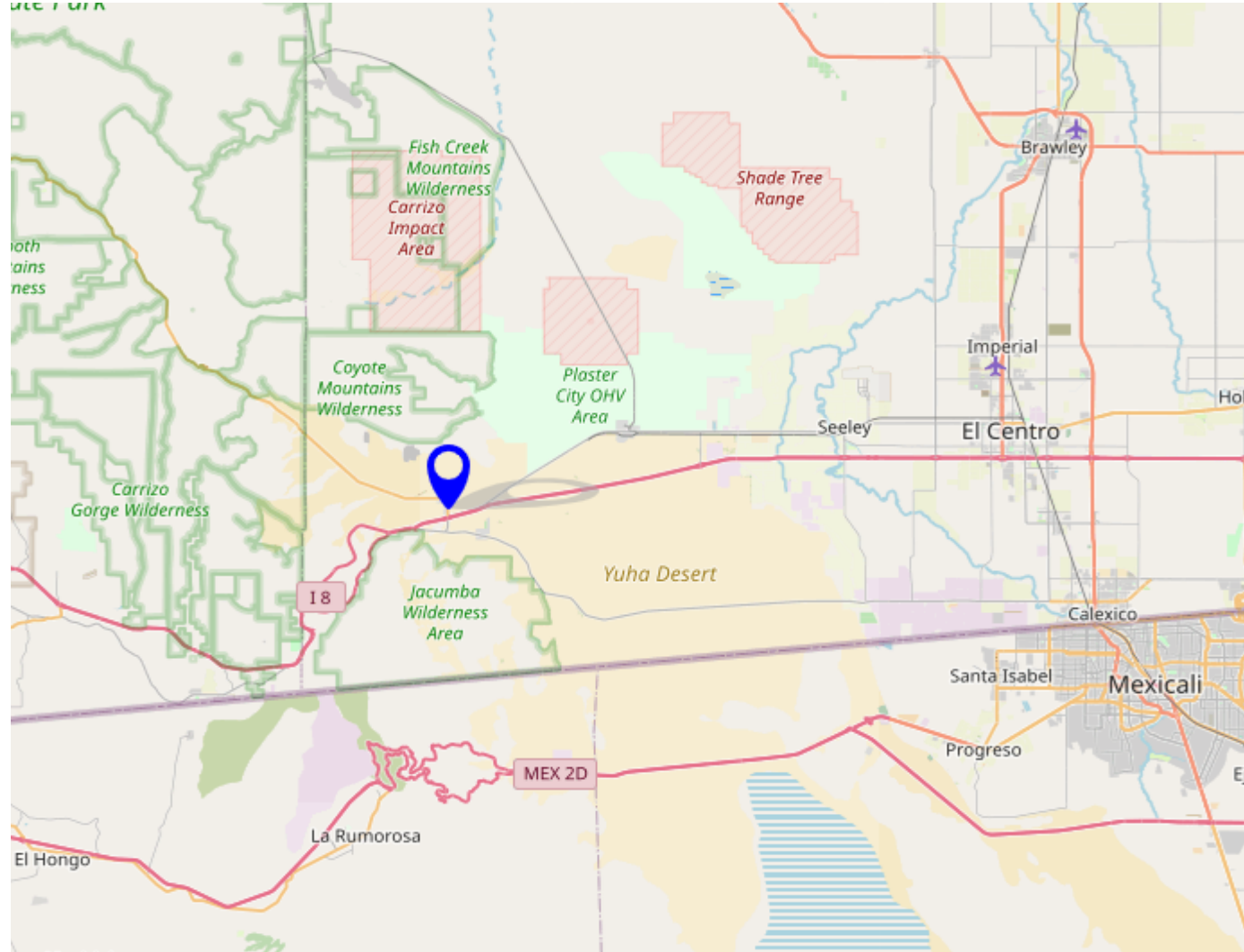
- North of Plaster City off of the Old State Route in The South East Corner of Township 15 South and Range 10 East Off S80
- 12 Miles West of El Centro
- 1 & 1/2 Miles Above Evans Hewes Highway

APN:

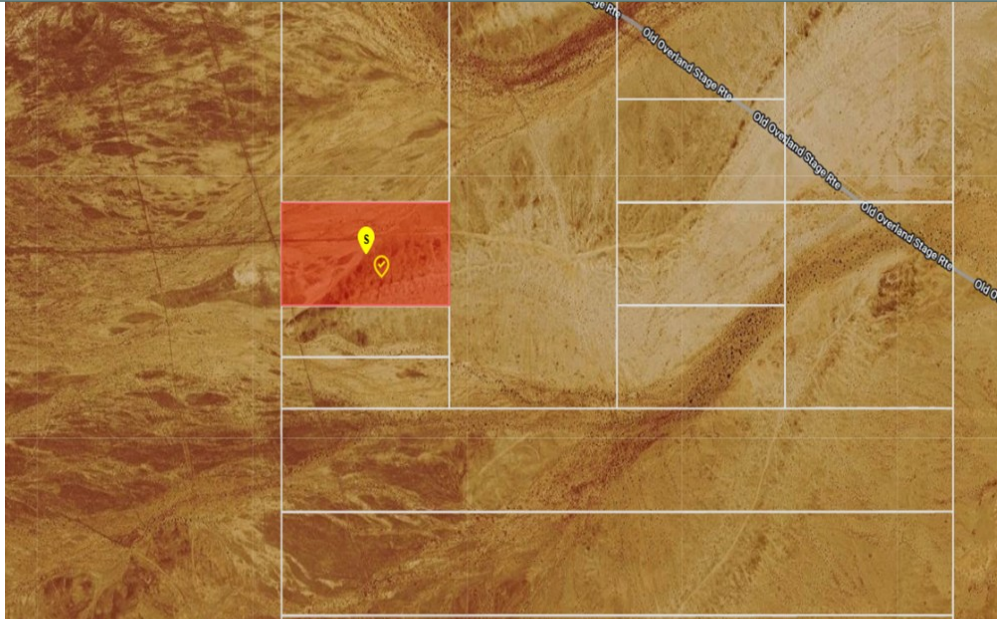
- 033-210-003, 004, 008, 014

PRICING

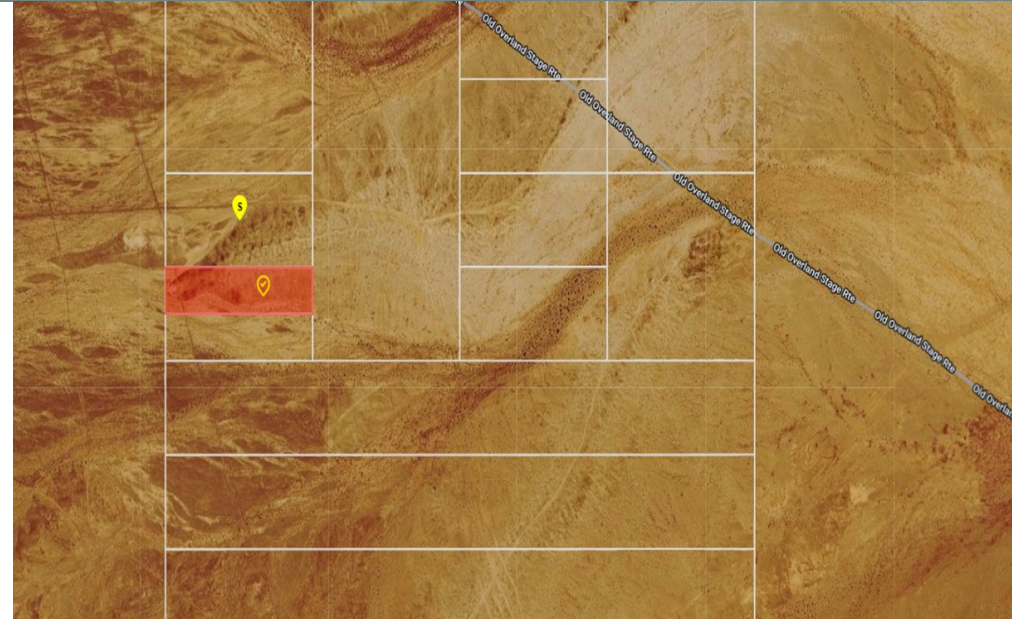
\$2,500 Per Acre



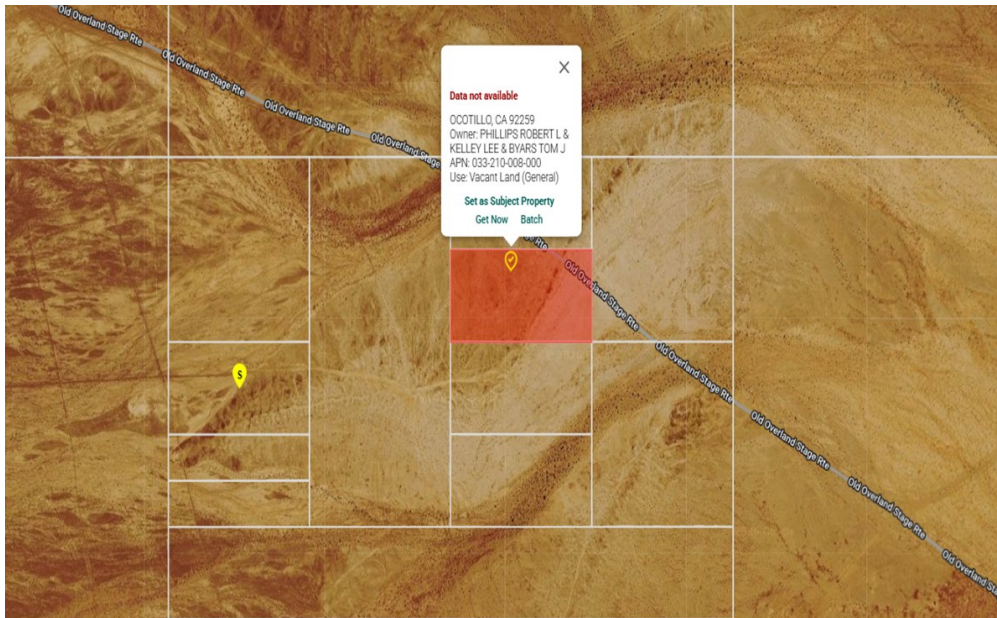
SOLD TOGETHER OR SEPARTELY



033-210-003: Approx. 20 Acres | \$50,000



033-210-004: Approx. 10 Acres | \$25,000

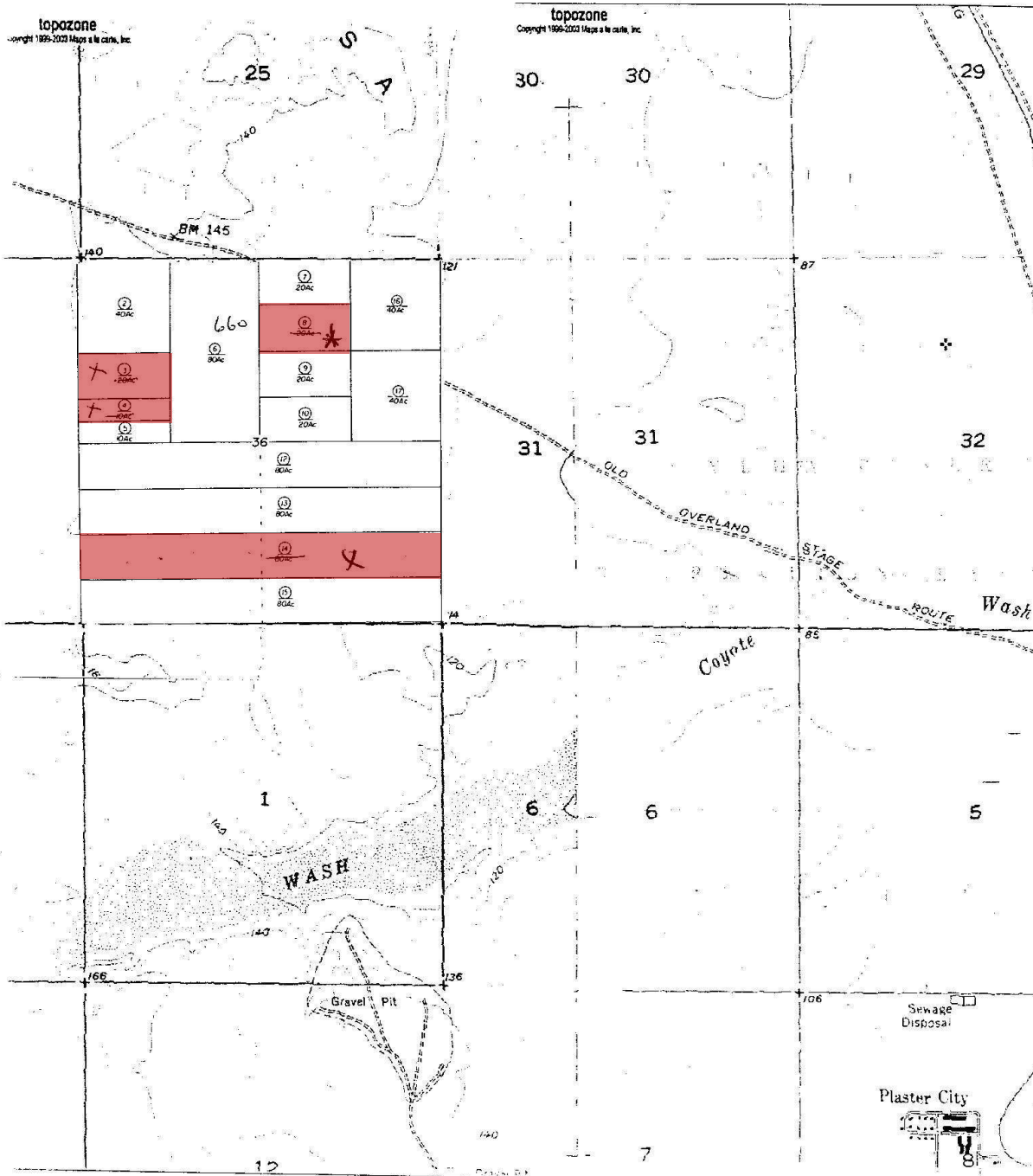


033-210-008: Approx. 20 Acres | \$50,000



033-210-014: Approx. 80 Acres | \$200,000

PLAT MAP



ROBERT PHILLIPS; CPM

President / CEO

Robert@PacificCoastCommercial.com

Lic. 00706262

OFFICE (619) 469-3600

10721 Trenea Street, Suite 200

San Diego, CA 92131

www.PacificCoastCommercial.com

Lic. 01209930



**PACIFIC COAST
COMMERCIAL**

SALES - MANAGEMENT - LEASING