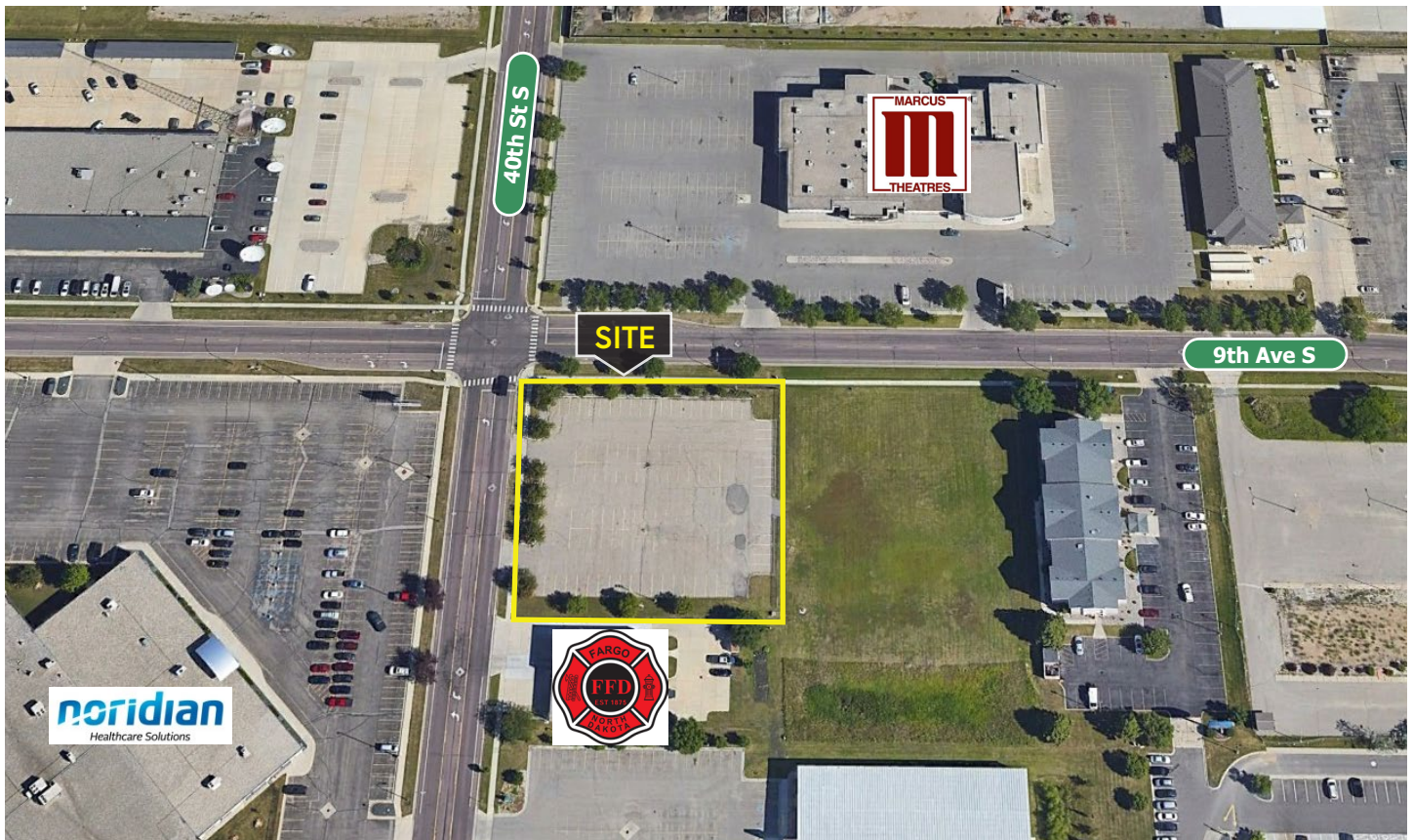


Build to Suit: Office/Retail
902 40th Street S, Fargo, ND 58103
MLS #23-392



ABOUT THE PROPERTY

Property Description: This customizable space is a great setting for your office or retail business to grow. As a build-to-suit property, approximately 15,000 SF of building space is available for General Commercial use. With the convenience of nearby restaurants and other retail including West Acres, it is comfortably situated in the adjacent Village West Fourth Addition subdivision.

Land Area: 48,400 SF (1.11 Acres)

Lease Rate: TBD

Parcel: 01-3600-00065-000



JESSE RILEY | REALTOR®

701.499.3883
jesse@prgcommercial.com
www.PropertyResourcesGroup.com

