

FOR LEASE

1351 South County Trail

East Greenwich, RI



EAST GREENWICH MEDICAL CENTER



SUITES AVAILABLE FROM $\pm 1,500$ SF TO $\pm 8,500$ SF



SYNERGISTIC MEDICAL COMMUNITY; FULL-SERVICE IMAGING & LAB ON-SITE



EASY HIGHWAY ACCESS I-95/RTE. 4



STRONG POPULATION AND INCOME DEMOGRAPHICS



CONVENIENT ACCESS TO NUMEROUS AREA RETAILERS



HAYES & SHERRY

1351 SOUTH COUNTY TRAIL

Property Description

1351 South County Trail in East Greenwich is a premier healthcare park setting in the East Greenwich Medical Center with over 30,000 SF of contiguous space available and significant branding opportunities located in the heart of the “Medical Mile”.

The property is home to a full spectrum of top-quality hospital and provider networks including imaging and laboratory services on-site.

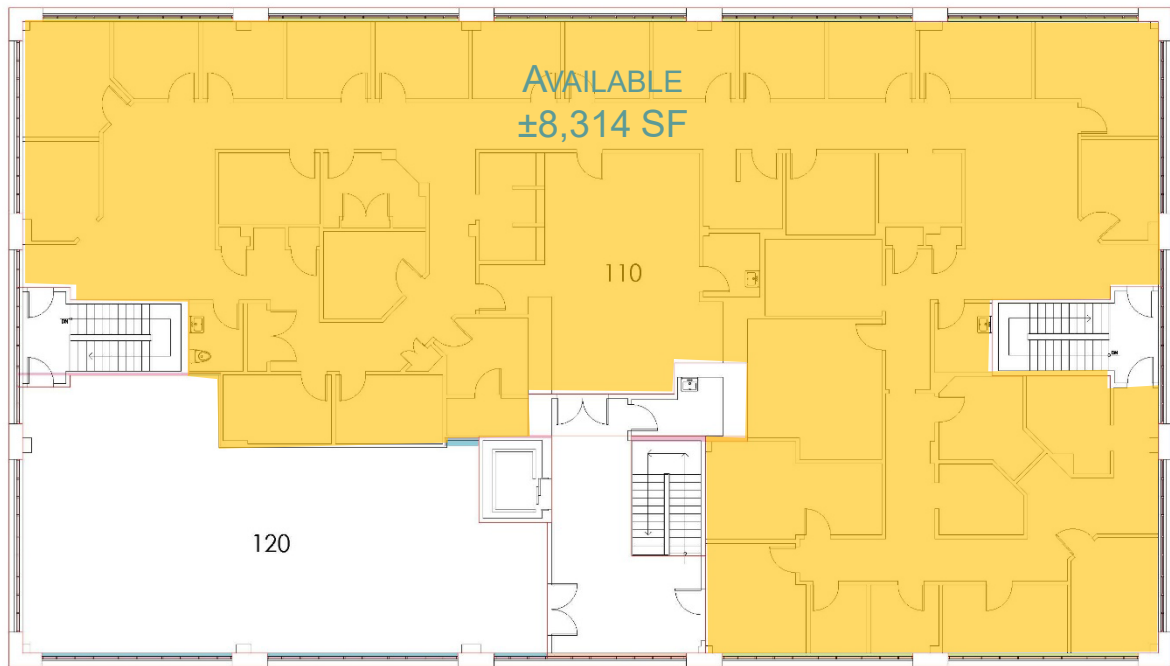
Convenient highway access to I-95 and Route 4 along with close-proximity to numerous nearby shopping and retail offerings make the East Greenwich Medical Center RI’s premier medical destination.

Infrastructure & Systems

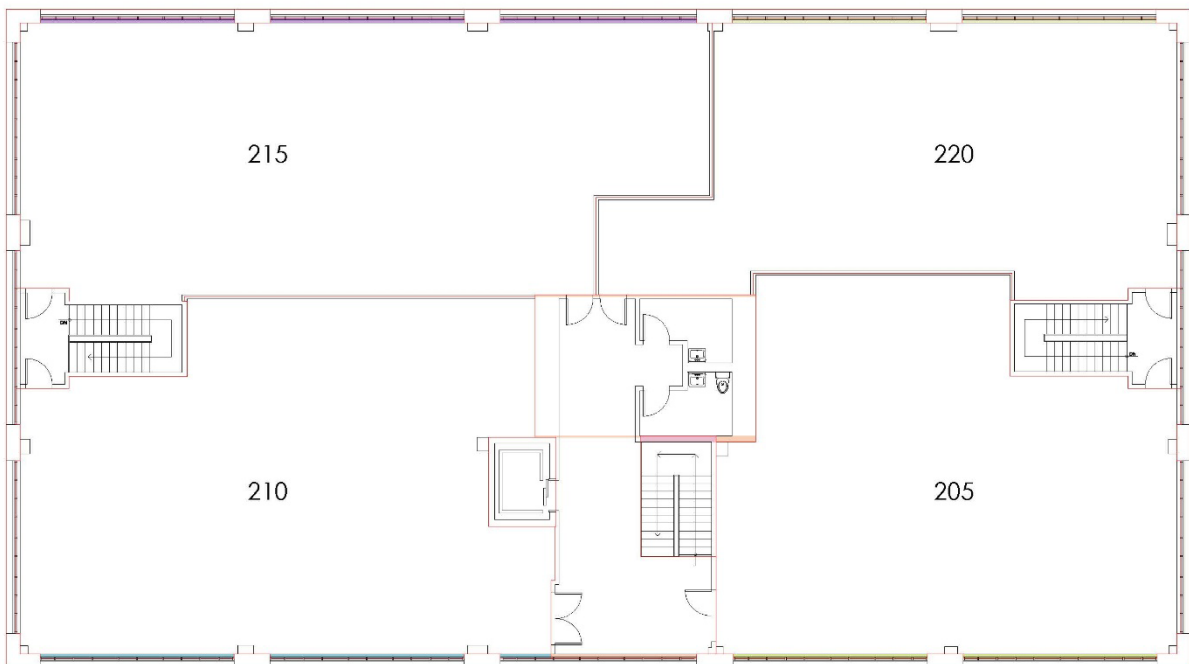
| | |
|------------------|--------------------------------------------------------------------------------------|
| Property Address | 1351 South County Trail, East Greenwich, RI |
| Buildings | 1,2,3 |
| Land Area | 5.3 acres |
| Rentable Area | 79,572 SF (16 condo units in 3 buildings) |
| Building SF | Building 1: 20,890 SF / 4 units |
| Number of Units | Building 2: 19,577 SF / 5 units |
| | Building 3: 39,105 SF / 7 units |
| Number of Floors | Two (2) |
| Built/Renovated | 2000 – 2002 |
| Roof | Rubber membrane |
| Parking | 334 spaces (4.1/1,000 SF) |
| Elevators | Three (3) passenger elevators 2,500-pound capacity each |
| HVAC | Gas-fired rooftop units |
| Electric Service | 1,200 amps, separately metered |
| Life Safety | Hardwired fire alarm, smoke and heat detectors, emergency lighting, sprinkler system |



BUILDING 1



BUILDING 2



BUILDING 3



FOR LEASE

1351 South County Trail

East Greenwich, RI



3 miles

40,214 PEOPLE

23,047 DAYTIME POP.

\$117,859 AVG.HH \$

5 miles

108,790 PEOPLE

55,997 DAYTIME POP.

\$100,181 AVG.HH \$

10 miles

290,311 PEOPLE

136,812 DAYTIME POP.

\$100,119 AVG.HH \$

For more information, contact:



HAYES & SHERRY

Matt Fair
Partner

401.273.2053
mfair@hayessherry.com

Steve Flachbart
Senior Vice President

401.273.2067
sflachbart@hayessherry.com

146 Westminster Street, 2nd floor
Providence, RI 02903
phone: 401.273.1980
hayessherry.com