



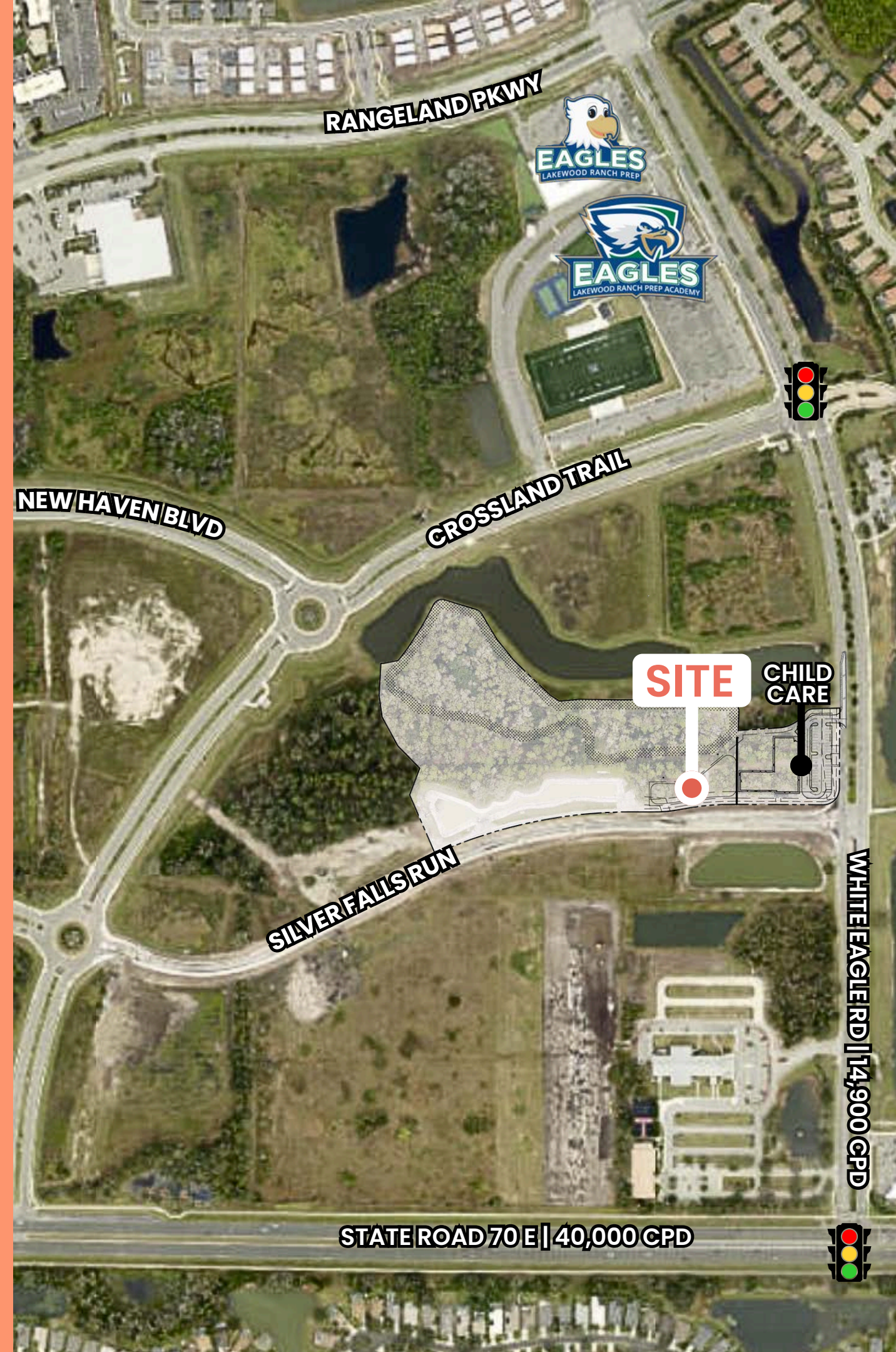
OUTPARCEL AVAILABLE FOR SALE/GROUND LEASE

SILVER FALLS RUN | BRADENTON, FL 34202
ADJACENT TO 17,500 SF CHILDCARE FACILITY

PROPERTY DETAILS

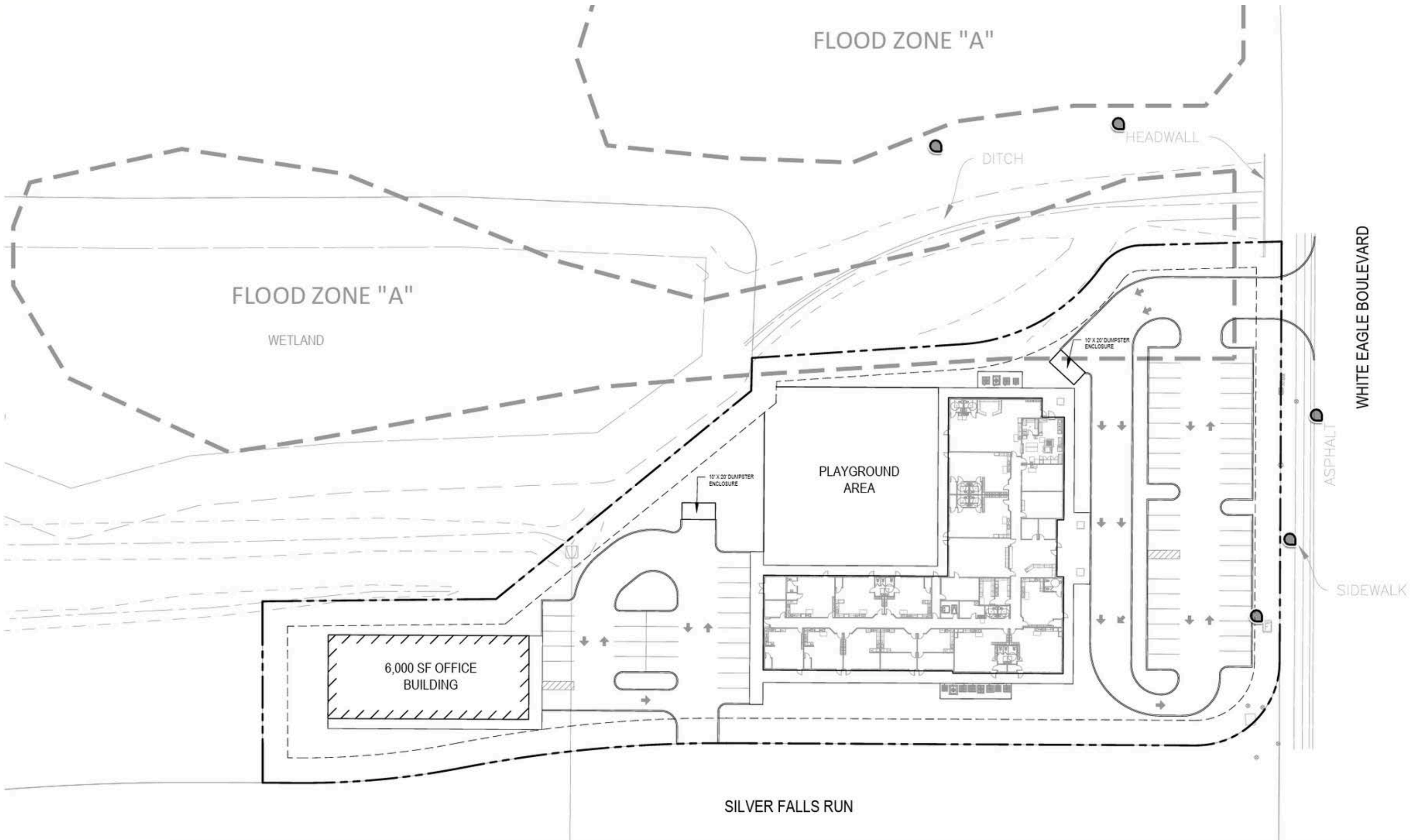
- 0.85 ACRES AVAILABLE
- FOR SALE OR GROUND LEASE
- ENTITLED FOR UP TO ~12,500 SF
- ZONED PD-MU
- ADJACENT TO 17,500 SF CHILDCARE FACILITY- ON THE NORTHWEST CORNER OF SILVER FALLS RUN & WHITE EAGLE RD
- DELIVERY: ROUGH GRADED W/UTILITIES STUBBED
- MASTER RETENTION IS IN PLACE
- SEPERATE PARKING

VIEW PERMITTED USES 



[illegible]

PRELIMINARY SITE PLAN



DEMOGRAPHICS



POPULATION

1 MILE- 7,033
3 MILES- 44,962
5 MILES- 99,381



HOUSEHOLDS

1 MILE- 3,009
3 MILES- 19,024
5 MILES- 43,575

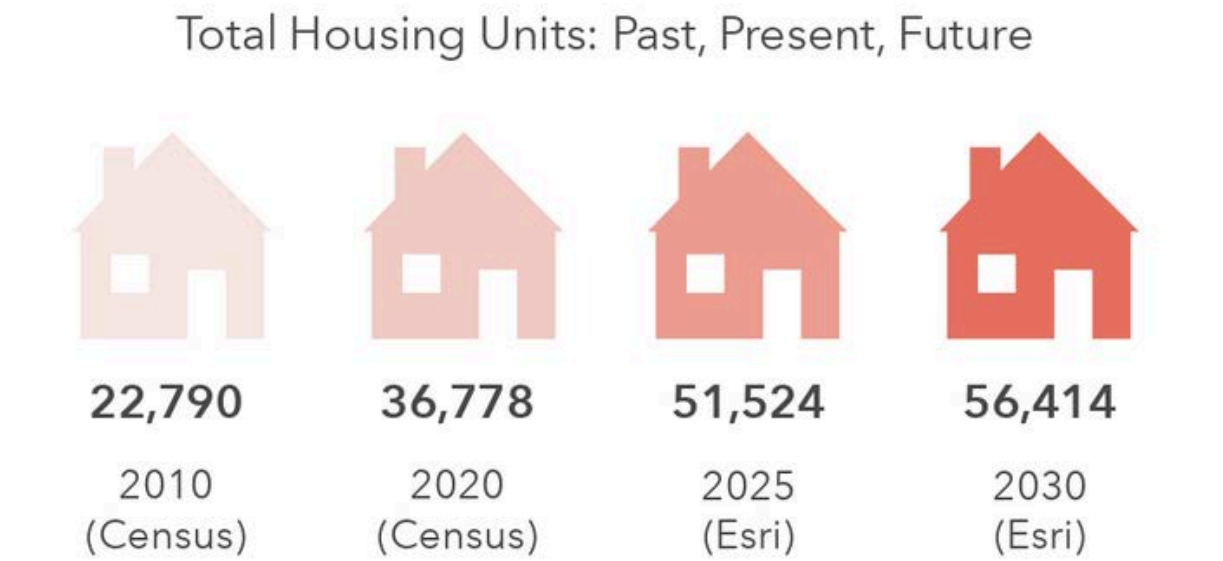
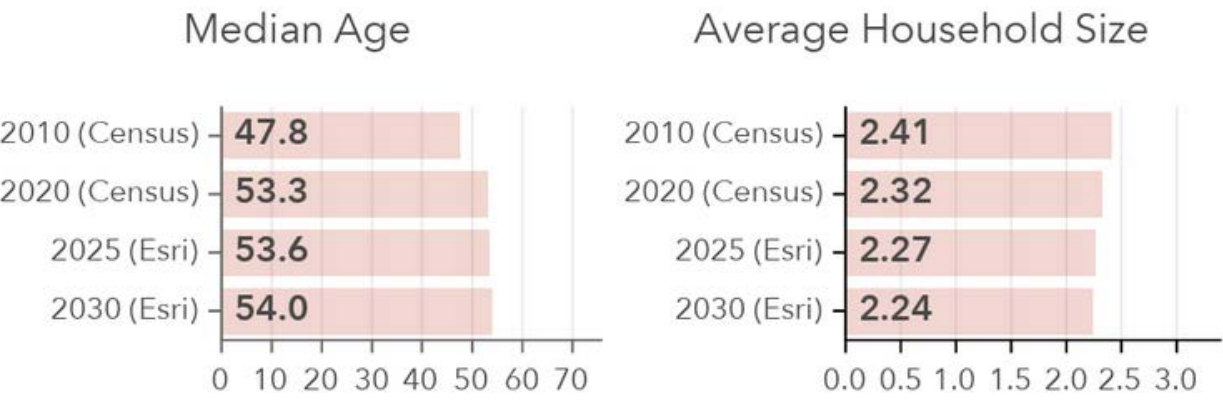
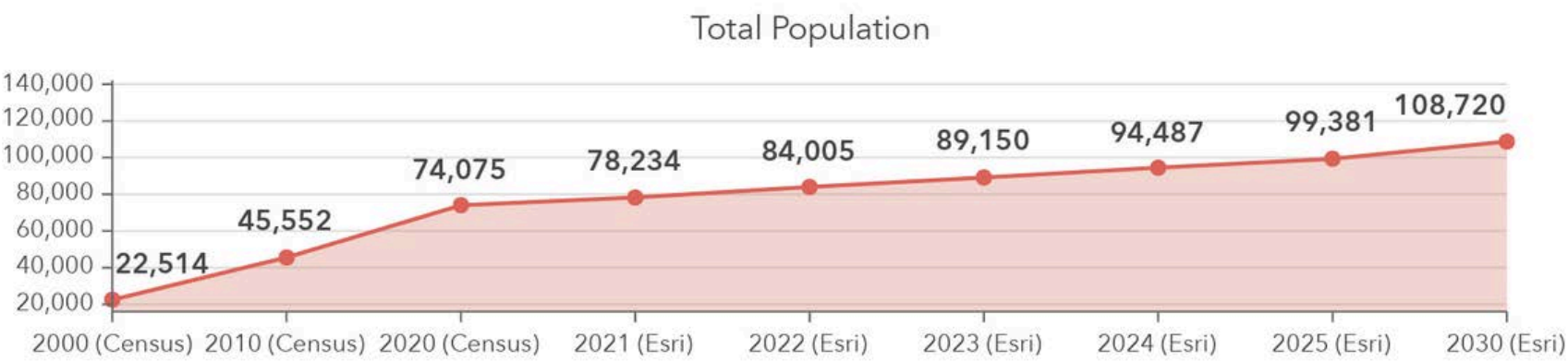


HH INCOME

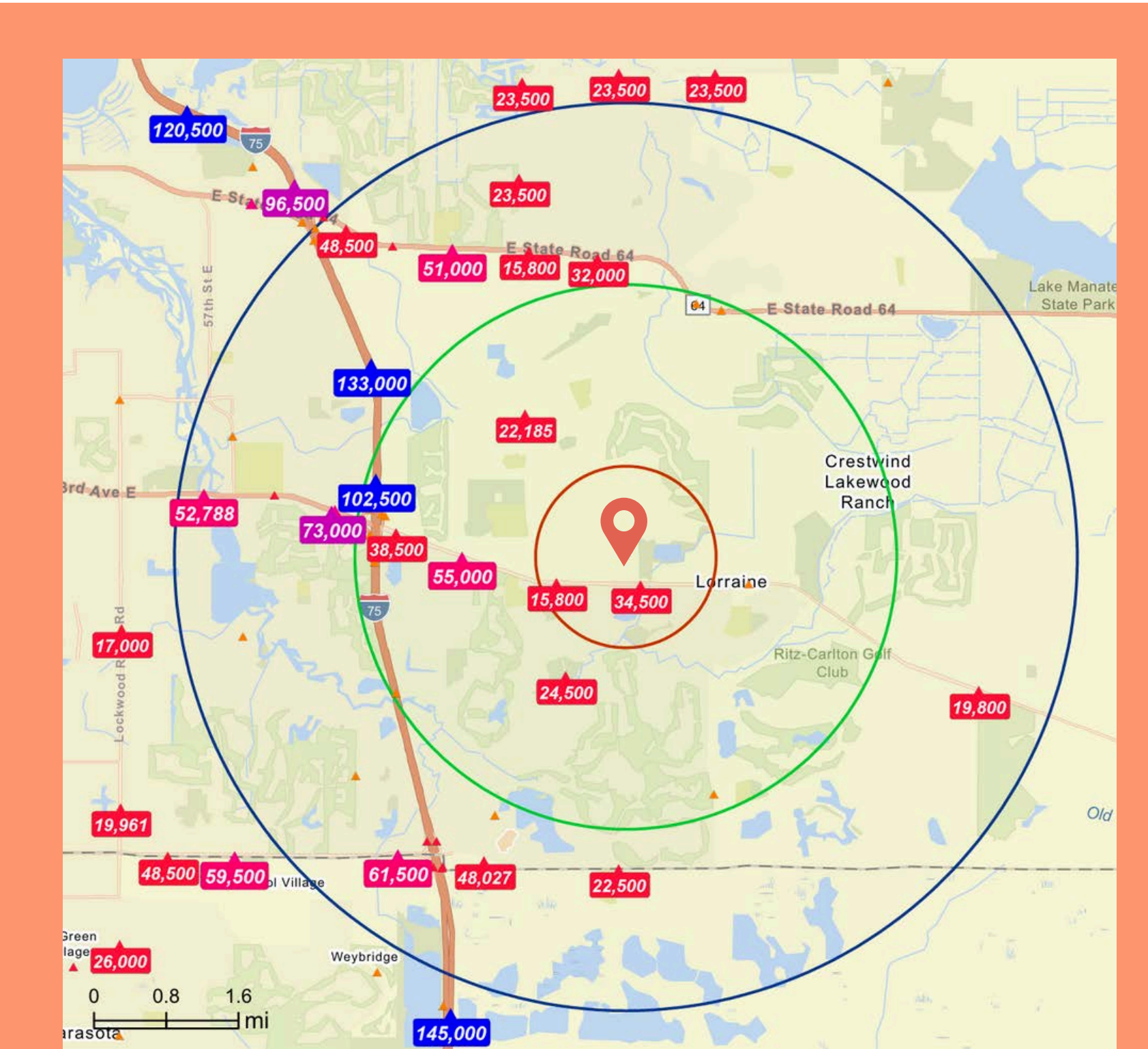
1 MILE-\$165,067
3 MILES-\$184,196
5 MILES-\$177,818



DEMOGRAPHICS & TRAFFIC COUNTS



DATA PULLED FROM A 5-MILE RADIUS





ARCHER
REAL ESTATE

HANNAH LYNN

SENIOR ASSOCIATE
HANNAH@ARCHERGROUPE.COM
813.399.1904

KYLE MASTERSON

CO-FOUNDER + PRINCIPAL
KYLE@ARCHERGROUPE.COM
727.656.8337

WWW.ARCHERGROUPE.COM | INFO@ARCHERGROUPE.COM | 813.463.0163

This marketing material is intended for informational purposes only and does not constitute an offer or solicitation for the purchase or lease of real estate. All properties, prices, and availability are subject to change without notice. The information provided is believed to be accurate but is not guaranteed. Commercial real estate services are provided by Archer Real Estate, a licensed real estate brokerage.