

# LAST RETAIL SPACE AVAILABLE

JOIN DUNKIN' DONUTS, & SPRINT

1966 VETERANS MEMORIAL HIGHWAY | ISLANDIA, NY 11749

## PROPERTY HIGHLIGHTS

SITE CATEGORY: INLINE

SIZES AVAILABLE: 950 SF

FRONTAGE: 18-36'

BUILDING DIMENSIONS: 90' X 55'

POSSESSION: ASAP

ASKING RENT: UPON REQUEST

PROPERTY HIGHLIGHTS:

- 33,157 VPD ON VETERANS MEMORIAL HIGHWAY



DEMOGRAPHICS	1 MILE	3 MILES	5 MILES
POPULATION	7,642	88,946	255,561
HOUSEHOLDS	2,070	26,954	76,432
AVG. HOUSEHOLD INCOME	\$108,007	\$115,882	\$119,167

JOIN:



CONTACT EXCLUSIVE BROKER FOR DETAILS:

**EDWARD GOTTlieb, CRS, CLX**

LIC. Associate RE Broker

ed@schuckmanrealty.com

12 E. 49TH STREET, SUITE 10-107 / NEW YORK, NY 10017  
1983 MARCUS AVENUE, SUITE 102 / LAKE SUCCESS, NY 11042

WWW.SCHUCKMANREALTY.COM

P. 516.496.8888

This information contained herein has been obtained from sources believed reliable. However, we have not verified it and make no guarantee, warranty or representation about it. It is submitted subject to the possibility of errors, omissions, change of price, rental and other conditions, prior sale, lease or financing, or withdrawal without notice. It is your responsibility to independently confirm its accuracy and completeness. Any projections, opinions, assumptions, or estimates used are for example only and they may not represent the current or future suitability, availability or performance of the property. You and your tax and legal advisors should conduct your own investigation of any property and transaction. We may or may not have an exclusive or nonexclusive contractual relationship with a tenant or the owner/landlord of a particular property; and if we do, such relationship shall be fully disclosed to you on a timely basis. Third-party trademarks, service marks, graphics, and logos belong to third parties. You are not granted any right or license with respect to Schuckman Realty Inc.'s trademarks service marks, graphics, and logos or the trademarks service marks, graphics, and logos of any third party. Kenneth Schuckman is Broker of record of Schuckman Realty Inc.

**SCHUCKMAN**  
REALTY INC.

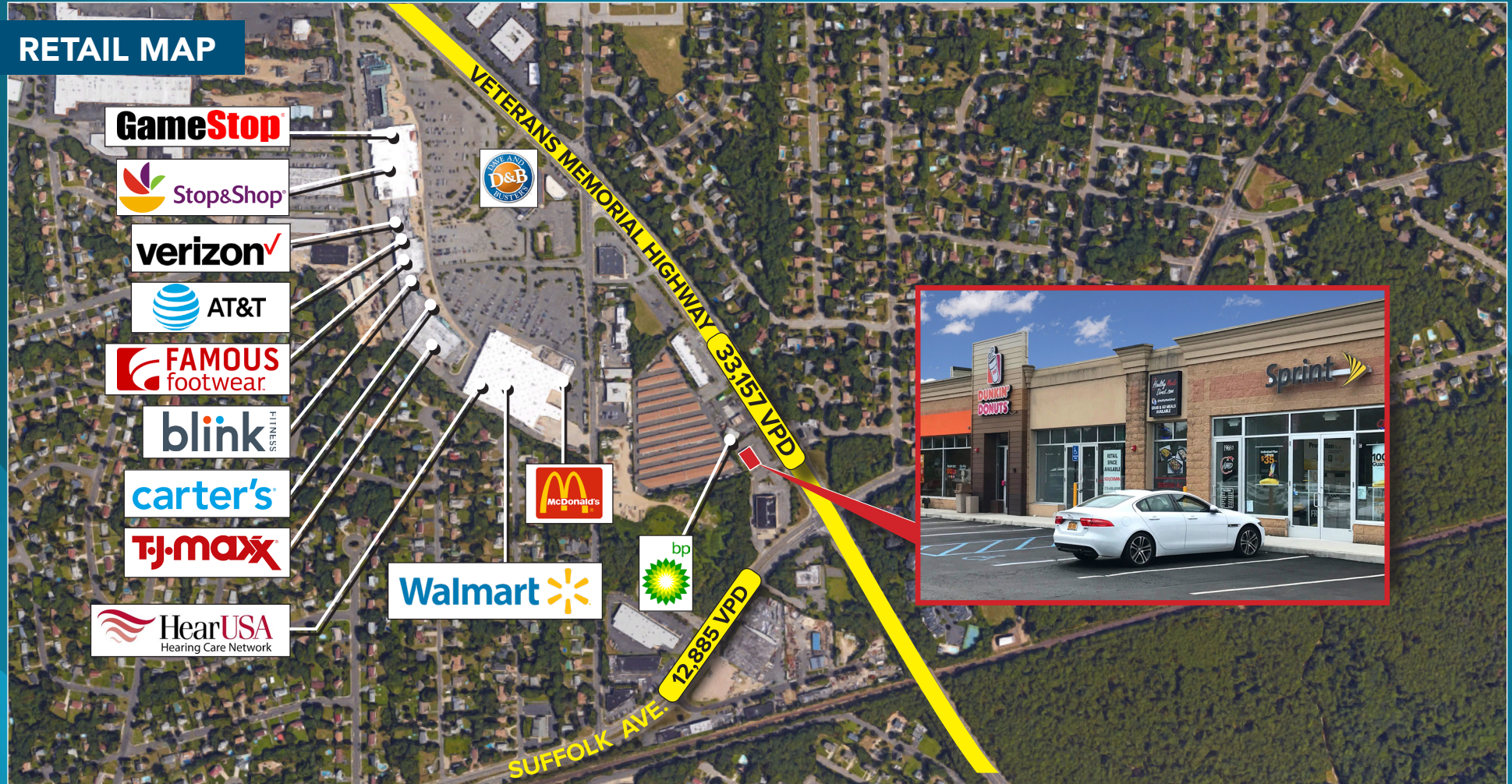


# LAST RETAIL SPACE AVAILABLE

JOIN DUNKIN' DONUTS, & SPRINT

1966 VETERANS MEMORIAL HIGHWAY | ISLANDIA, NY 11749

## RETAIL MAP



CONTACT EXCLUSIVE BROKER FOR DETAILS:

**EDWARD GOTTlieb, CRS, CLX**  
LIC. Associate RE Broker  
ed@schuckmanrealty.com

12 E. 49TH STREET, SUITE 10-107 / NEW YORK, NY 10017  
1983 MARCUS AVENUE, SUITE 102 / LAKE SUCCESS, NY 11042

WWW.SCHUCKMANREALTY.COM  
P. 516.496.8888

This information contained herein has been obtained from sources believed reliable. However, we have not verified it and make no guarantee, warranty or representation about it. It is submitted subject to the possibility of errors, omissions, change of price, rental and other conditions, prior sale, lease or financing, or withdrawal without notice. It is your responsibility to independently confirm its accuracy and completeness. Any projections, opinions, assumptions, or estimates used are for example only and they may not represent the current or future suitability, availability or performance of the property. You and your tax and legal advisors should conduct your own investigation of any property and transaction. We may or may not have an exclusive or nonexclusive contractual relationship with a tenant or the owner/landlord of a particular property; and if we do, such relationship shall be fully disclosed to you on a timely basis. Third-party trademarks, service marks, graphics, and logos belong to third parties. You are not granted any right or license with respect to Schuckman Realty Inc.'s trademarks service marks, graphics, and logos or the trademarks service marks, graphics, and logos of any third party. Kenneth Schuckman is Broker of record of Schuckman Realty Inc.

**SCHUCKMAN**  
REALTY INC.